



COOPER CARRY
THE CENTER FOR CONNECTIVE ARCHITECTURE

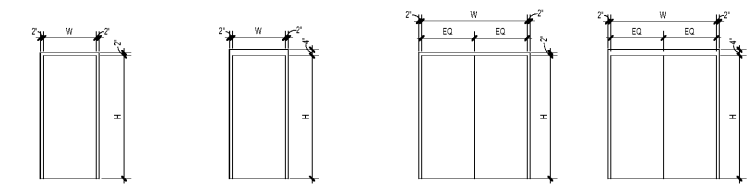
191 Peachtree Street NE
Suite 2400
Atlanta, GA 30303-1770
(404) 237-2000
coopercarry.com

©2019 COOPER CARRY



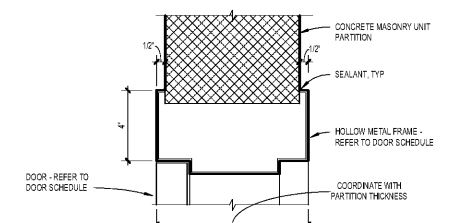
ISSUANCES		
No.	Drawing Issue Description	Date
ISSUED FOR B/D		11/04/19

NO.	ROOM NAME	DOOR							FRAME					FIRE RATING	COMMENTS
		TYPE	WIDTH	HEIGHT	THICKNESS	MATERIAL	FINISH	HARDWARE SET	TYPE	HEAD	JAMB	SILL	MATERIAL		
NOTE PLAN - FIELDHOUSE															
T01	GIRLS LOCKER ROOM	SP01	3'-0"	7'-0"	0'-1 3/4"	HM		D1							DOORS PROVIDED PER METAL BUILDING SYSTEMS
T03	FEMALE COACH	SP01	3'-0"	7'-0"	0'-1 3/4"	HM		D8							
T04	FEMALE COACH TOILET	SP02	3'-0"	7'-0"	0'-1 3/4"	HM		D7							
T05	UTILITY	SP02	3'-0"	7'-0"	0'-1 3/4"	HM		D8							
T06	STORAGE	CD02	4'-0"	7'-0"	0'-1 3/4"	HM		D9							
T07A	VESTIBULE	CD02	4'-0"	7'-0"	0'-1 3/4"	HM		D10							
T07B	GIRLS LOCKER ROOM	SP02	3'-0"	7'-0"	0'-1 3/4"	HM		D10							
T07C	TRAINING	CD02	4'-0"	7'-0"	0'-1 3/4"	HM		D3							
T08A	BOYS LOCKER ROOM	SP02	3'-0"	7'-0"	0'-1 3/4"	HM		D4							
T08B	BOYS LOCKER ROOM	SP01	3'-0"	7'-0"	0'-1 3/4"	HM		D1							DOORS PROVIDED PER METAL BUILDING SYSTEMS
T10A	HEAD MALE COACH	SN02	3'-0"	7'-0"	0'-1 3/4"	HM		D6							
T10B	HEAD MALE COACH	SP01	3'-0"	7'-0"	0'-1 3/4"	HM		D8							
T11	MALE COACH RES ROOM	SP02	3'-0"	7'-0"	0'-1 3/4"	HM		D7							
T12	ASSISTANT COACH OFFICE	SN02	3'-0"	7'-0"	0'-1 3/4"	HM		D6							
T13	VESTIBULE	SP01	3'-0"	7'-0"	0'-1 3/4"	HM		D1							DOORS PROVIDED PER METAL BUILDING SYSTEMS
T14A	STORAGE	SP01	3'-0"	7'-0"	0'-1 3/4"	HM		D5							DOORS PROVIDED PER METAL BUILDING SYSTEMS
T14B	STORAGE	CD01	8'-1 1/2"	8'-5 1/2"		ALUM		D11							COOLING DOOR

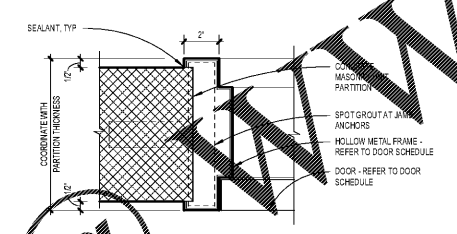


NOTE: COORDINATE FRAME SIZES WITH SCHEDULED DOOR PANEL SIZES

01 SINGLE DOOR FRAME HOLLOW METAL
02 SINGLE DOOR FRAME HOLLOW METAL WITH # HEAD
03 DOUBLE DOOR FRAME HOLLOW METAL
04 DOUBLE DOOR FRAME HOLLOW METAL WITH # HEAD



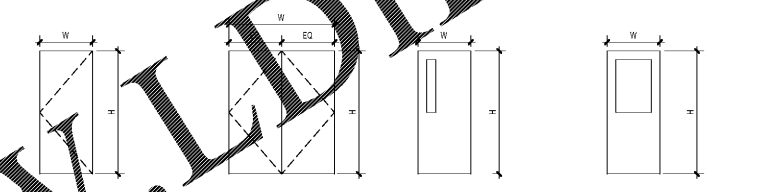
1 DOOR HEAD DTL - CMU THROATED
SCALE: 3" = 1'-0"



2 DOOR JAMB DTL - CMU THROATED
SCALE: 3" = 1'-0"

THROATED FRAME CMU DOOR DETAILS

DOOR FRAME TYPES



SF SINGLE FLUSH
SF01 FLUSH HOLLOW METAL DOOR, 36"W x 84"H
SF02 FLUSH HOLLOW METAL DOOR, 36"W x 84"H WITH # FRAME HEAD

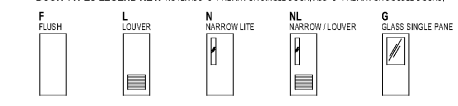
DF DOUBLE FLUSH
DF01 FLUSH HOLLOW METAL DOOR, 72"W x 84"H
DF02 FLUSH HOLLOW METAL DOOR, 72"W x 84"H WITH # FRAME HEAD

SN SINGLE NARROW
SN01 FLUSH HOLLOW METAL DOOR, 36"W x 84"H
SN02 FLUSH HOLLOW METAL DOOR, 36"W x 84"H WITH # FRAME HEAD

SG SINGLE GLASS
SG01 FLUSH HOLLOW METAL DOOR, 36"W x 84"H

DOOR TYPES

DOOR TYPES LEGEND KEY: NOTE: ADD 'S' PREFIX FOR SINGLE DOOR; ADD 'D' PREFIX FOR DOUBLE DOORS.



Order Plans

PROJECT NUMBER: 20190224.01 PROJECT NAME: PEBBLEBROOK HS S5B007 - FIELDHOUSE
SHEET NUMBER: AF9.10 - DOOR SCHEDULE AND TYPES
M:\2018\20180008\7 drawings\4-7-1 rev\users\20180008_Pebblebrook B007_Fieldhouse_2019_Callahan01947.rvt
11/1/2019 10:42:59 AM

PEBBLEBROOK HS S5B007 -
FIELDHOUSE
DOE Facility Code 7010
FTE = 2787
IU = 143
991 OLD ALABAMA ROAD
MABLETON, GA 30126

COBB COUNTY SCHOOL DISTRICT
DOOR SCHEDULE AND TYPES

ROBERT JUST 20190224.01
Principal/Designer
SOPHIA TARKHAN 11/04/19
Project Manager
MARC NUNES
Project Architect
WILLIAM CALLAHAN
Staff Architect

AF9.10

ISSUED FOR CONSTRUCTION