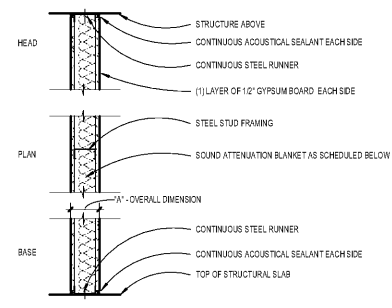




ISSUANCES		
No.	Drawing Issue Description	Date
1	ISSUED FOR B/D	11/04/19



OS NON-RATED STEEL FRAMED PARTITION
NON-LOAD BEARING - (1) LAYER 1/2" GYPSUM BOARD, EACH SIDE

DESIGNATION	NO.	STUD SIZE	GA. DIM.	GA. (MAX)	FIRE TEST	LIMITING HEIGHT (NOTE 1)			DEFL.	"S" MODIFIER		
						5 psf	7.5 psf	15 psf		S1C CLASS	SOUND TEST	SAB
0532	2-1/2"	3-1/2"	25	24"	19'-7"	9'-0"	9'-0"	L248	47	SA-031001	1-1/2"	
			20	18"	11'-0"	9'-0"	9'-0"	L260				
0549	3-5/8"	4-5/8"	25	24"	13'-0"	11'-0"	9'-0"	L248	51	RA-1.1	0"	
			20	18"	14'-0"	12'-0"	11'-4"	L260				
0580	4"	5"	25	24"	14'-0"	12'-0"	10'-0"	L248	51	RA-1.1	0"	
			20	18"	15'-0"	13'-0"	10'-11"	L260				
0570	5"	7"	25	24"	16'-0"	13'-0"	11'-0"	L248	51	RA-1.1	0"	
			20	18"	21'-4"	18'-0"	17'-0"	L260				

5 0Sa 1/2" GYPSUM BOARD
AF9.01 SCALE: 1" = 1'-0"

STEEL STUD PARTITIONS

GENERAL NOTES

- LIMITING HEIGHT, STUD GAUGE AND SPACING INFORMATION PROVIDED IN PARTITION SCHEDULES ARE ABBREVIATED AND MAY NOT ADDRESS ALL CONDITIONS OF THE PROJECT. THE INFORMATION IS PROVIDED FOR USE AS A GUIDE AND DOES NOT ALLEVIATE THE CONTRACTOR FROM PROVIDING WALL ASSEMBLIES THAT MEET THE DESIGN CRITERIA FOR EACH CONDITION. CONTRACTOR SHALL COORDINATE WITH PROJECT CONDITIONS AND PROVIDE WALL ASSEMBLIES BASED ON MANUFACTURER'S STANDARD SPAN TABLES THAT MEET DESIGN CRITERIA INCLUDING: LOADS, DEFLECTION LIMITS, FIRE TEST RATINGS AND SOUND TEST CLASSIFICATIONS.
- SOUND TRANSMISSION CLASS (STC) INDICATED IS BASED ON MATERIALS AND CONSTRUCTION IDENTICAL TO THOSE IN SOUND TEST ASSEMBLY SCHEDULES. IF CHANGES IN THE ASSEMBLY ARE NECESSARY DUE TO CONTRACTOR'S SELECTION OF PRODUCTS, MANUFACTURER OR DUE TO REQUIRED PARTITION HEIGHT, DEFLECTION CRITERIA OR DESIGN PRESSURE, CONTRACTOR SHALL SUBMIT FOR APPROVAL AND PROVIDE ALTERNATE PARTITION ASSEMBLIES THAT MEET SPECIFIED DESIGN CRITERIA. FIELD SOUND TRANSMISSION (STC) IS PERMITTED TO BE 5 POINTS LOWER THAN SPECIFIED STC.
- IF THE SELECTED STEEL STUD MANUFACTURER'S THICKNESS OF STEEL COMPONENT VARIES FROM THE BASIS OF DESIGN (AS DEFINED BELOW) OR HAS OTHER ATTRIBUTES THAT VARY FROM THE BASIS OF DESIGN, PROVIDE MANUFACTURER'S STANDARD THICKNESS WITH LIMITING HEIGHT SPAN TABLES THAT MEETS OR EXCEEDS THE SPECIFIED DESIGN CRITERIA.
- PARTITIONS SHALL EXTEND TO AND TERMINATE AT THE UNDERSIDE OF STRUCTURE ABOVE, UNLESS NOTED OTHERWISE.
- RATED PARTITIONS SHALL BE PERMANENTLY IDENTIFIED IN CONCEALED SPACES EITHER AS REQUIRED BY CODE OR WITH 2" HIGH LETTERING IN A COLOR / VALUE CONTRASTING WITH THE BACKGROUND AND SPACE NO MORE THAN 12 FEET ON CENTER. TEXT SHALL READ AS REQUIRED BY CODE OFFICIAL OR AS "_____ HOUR FIRE & SMOKE BARRIER - PROTECT ALL OPENINGS - (FILL IN APPROPRIATE HOURLY RATING)
- GYPSUM WALL BOARD IS TO BE TYPE "X" FIRE RESISTANT BOARD UNLESS OTHERWISE NOTED.
- DOOR OPENING FRAMING (WHETHER RATED OR NON-RATED) SHALL BE MINIMUM 20 GAGE STEEL WITH SINGLE STUD JAMB FOR STANDARD WEIGHT DOORS AND DOUBLE STUD JAMB FOR HEAVY WEIGHT DOORS IN ACCORDANCE WITH GYPSUM ASSOCIATION'S FINISH GA-315.

DESIGN CRITERIA

DESIGN PRESSURE	PARTITION PURPOSE / LOCATION
5.75 psf / 10.15 psf	ELEVATOR HOISTWAYS REFER TO US RECOMMENDATIONS BELOW
10 psf	STAIRS, OTHER VERTICAL SHAFTS
15 psf	GROUND FLOOR LOBBIES & ATRIUMS
5 psf	OTHER WALLS

DEFLECTION LIMIT	CLADDING MATERIAL
L/720	BRICK / STONE / CONCRETE
L/360	LATH AND PLASTER / ENGINEER PLASTER
L/360	TILE FINISH
L/240	OTHER

USE HOISTWAY CHART - PROVIDED FOR INFORMATION ONLY
USE RECOMMENDED DESIGN PRESSURES FOR SHIELD WALL CONSTRUCTION IN ACCORDANCE WITH THE FOLLOWING TABLE:

WIND VELOCITY (MPH)	ONE OR TWO ELEVATORS PER SHAFT	THREE OR MORE ELEVATORS PER SHAFT
75 (15.24 TO 150 (38.1))	5.0 PSF (230 PA)	5.0 PSF (230 PA)
100 (25.3 TO 100 (25.3))	7.5 PSF (338 PA)	5.0 PSF (230 PA)
100 (25.3 TO 180 (45.7))	10.0 PSF (478 PA)	7.5 PSF (338 PA)
180 (45.7 TO 300 (76.2))	15.0 PSF (718 PA)	5.0 PSF (230 PA)

BASIS OF DESIGN

MINIMUM METAL THICKNESS
IF THE SELECTED MANUFACTURER'S THICKNESS OF STEEL COMPONENTS VARIES FROM THE BASIS OF DESIGN INDICATED BELOW, PROVIDE MANUFACTURER'S STANDARD THICKNESS AND SPAN TABLES THAT MEETS OR EXCEEDS THE PERFORMANCE REQUIREMENTS INDICATED.

STEEL FRAME PARTITIONS
STEEL FRAME PARTITIONS ARE BASED ON INFORMATION PROVIDED IN THE STEEL STUD MANUFACTURER'S ASSOCIATION (SSMA) PUBLICATION "PRODUCT TECHNICAL INFORMATION" DATED 07/2010

REFERENCE GAGE	DESIGN THICKNESS (IN.)	MINIMUM THICKNESS (ML)
25	0.0188	18
22	0.0283	27
20	0.0346	33
18	0.0451	43

SHAFT WALLS
SHAFT WALLS ARE BASED ON UNITED STATES GYPSUM COMPANY PRODUCT LITERATURE SA 903 (REV. 06/2006)

REFERENCE GAGE	DESIGN THICKNESS (IN.)	MINIMUM THICKNESS (IN.)
25	0.0188	0.0179
24	0.0283	0.0227
20	0.0359	0.0341

CHASE WALLS
CHASE WALLS ARE BASED ON UNITED STATES GYPSUM COMPANY PRODUCT LITERATURE SA 903 (REV. 03/2002)

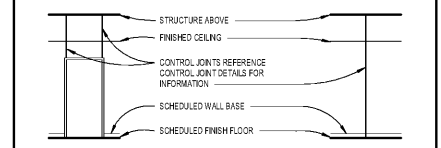
REFERENCE GAGE	DESIGN THICKNESS (IN.)	MINIMUM THICKNESS (IN.)
25	0.0188	0.0179
22	0.0284	0.0270
20	0.0359	0.0341
18	0.0470	0.0454

GYPSUM BOARD CONTROL JOINTS

CONSTRUCTION AND LOCATION	MAXIMUM SINGLE DIMENSION	MAXIMUM SINGLE AREA
PARTITION - INTERIOR	30' - 0"	
CEILING - INTERIOR		
WITH PERIMETER RELIEF	50' - 0"	2,500 S.F.
WITHOUT PERIMETER RELIEF	30' - 0"	900 S.F.

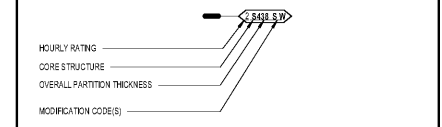
NOTE: ANY REQUIRED CONTROL JOINTS NOT SHOWN OR LOCATED IN THE DRAWINGS SHALL BE FIELD COORDINATED WITH THE ARCHITECT PRIOR TO FINAL INSTALLATION

GYPSUM BOARD CONTROL JOINT PLACEMENT DIAGRAMS



PARTITION NUMBERING SYSTEM

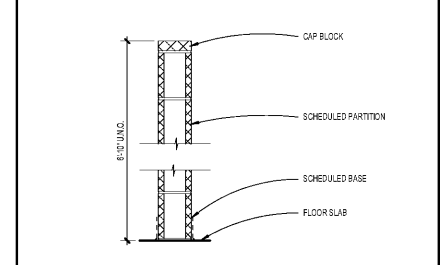
PARTITION TYPE MARKER



HOURLY RATING	CORE STRUCTURE		
0	1 HOUR	S	STEEL STUD
1	1 HOUR	W	WOOD STUD
2	2 HOUR	M	CONCRETE MASONRY UNIT
3	3 HOUR	F	FURRING
4	4 HOUR	X	SHAFT WALL - STEEL STUD
5	SMOKE	C	CHASE WALL

MODIFICATION CODES

- C ADD 1/2" GEMENT BOARD LAYER TO SURFACE OF SCHEDULED PARTITION IN AREAS TO RECEIVE TILE
- I SUBSTITUTED WITH FACE LAYER OF SCHEDULED GYPSUM BOARD WITH IMPACT RESISTANT SURFACE BOARD OF EQUAL THICKNESS AND FIRE RATING
- W SUBSTITUTED SCHEDULED GYPSUM BOARD WITH GLASS MAT, WATER RESISTANT BACKING AND GYPSUM BOARD OF EQUAL THICKNESS AND FIRE RATING IN AREAS TO RECEIVE TILE
- P PARTITION IS SHIELD WALL - REFER TO "P" MODIFIER DETAIL
- S SOUND ATTENUATION REQUIRED - COMPLY WITH SCHEDULED STC RATING & TESTING ASSEMBLY REQUIREMENTS
- X EXTEND GYPSUM WALL BOARD TO ABOVE FINISH CEILING - REFER TO "X" MODIFIER DETAIL BELOW FOR ADDITIONAL INFORMATION
- Y EXTEND PARTITION TO ABOVE FINISH CEILING AND BRACE TO STRUCTURE - REFER TO "Y" MODIFIER DETAIL BELOW FOR ADDITIONAL INFORMATION



"P" MODIFIER - PARTIAL HEIGHT WALL

Order Plans @ www.pdfplanning.com

PEBBLEBROOK HS S5B007 -
FIELDHOUSE
DOE Facility Code 7010
FTE = 2787
IU = 143
991 OLD ALABAMA ROAD
MABLETON, GA 30126
COBB COUNTY SCHOOL DISTRICT
INTERIOR PARTITIONS

ROBERT JUST 20190224.01
Principal/Designer
SOPHIA TARKHAN Project No.
Project Manager 11/04/19
MARC NUNES Date
Project Architect
WILLIAM CALLAHAN
Staff Architect

AF9.01