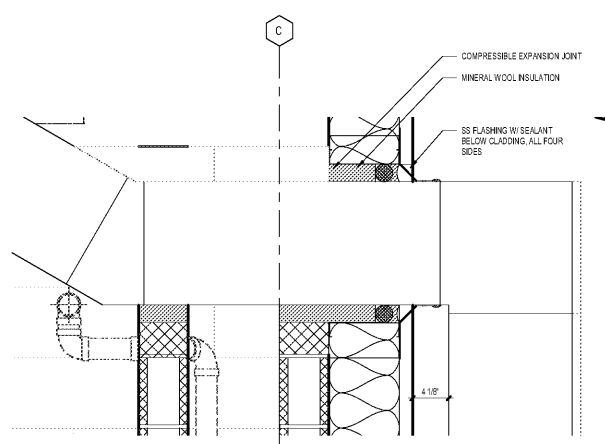
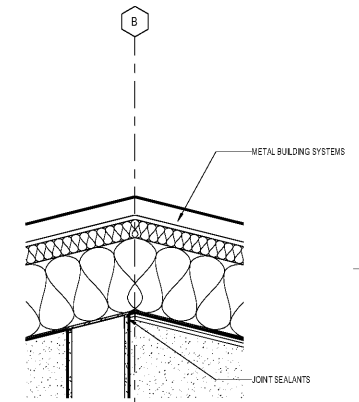




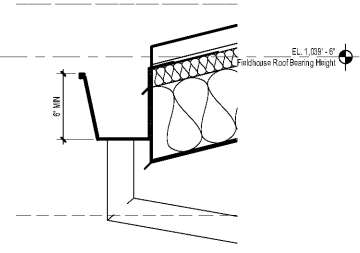
ISSUANCES		
No.	Drawing Issue Description	Date
ISSUED FOR 9/D		11/04/19



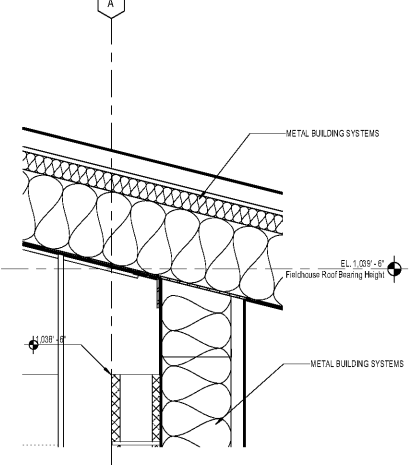
L1 SECTION DETAIL
AF6.01 SCALE: 1 1/2" = 1'-0"



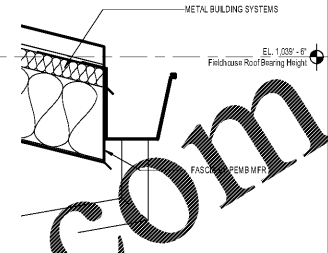
L6 SECTION DETAIL
AF6.01 SCALE: 1 1/2" = 1'-0"



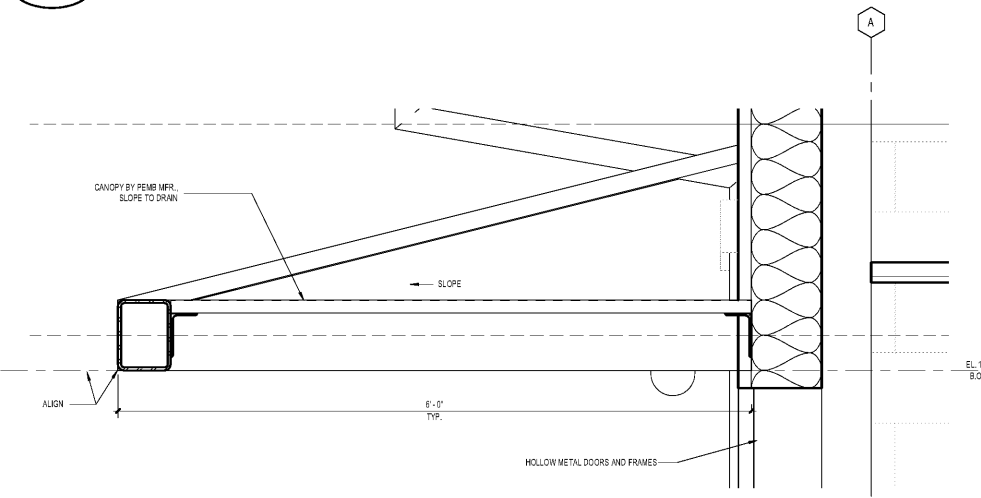
L9 SECTION DETAIL
AF6.01 SCALE: 1 1/2" = 1'-0"



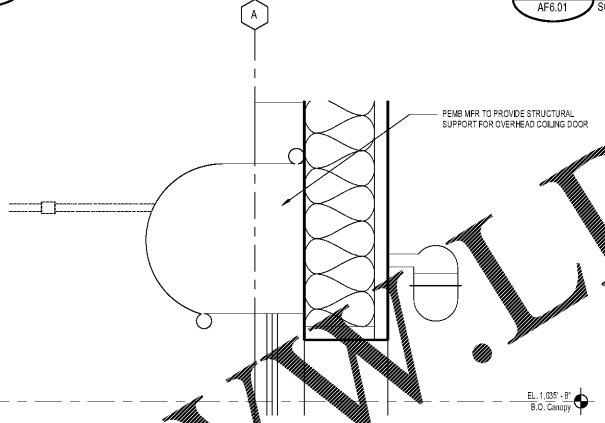
L13 SECTION DETAIL
AF6.01 SCALE: 1 1/2" = 1'-0"



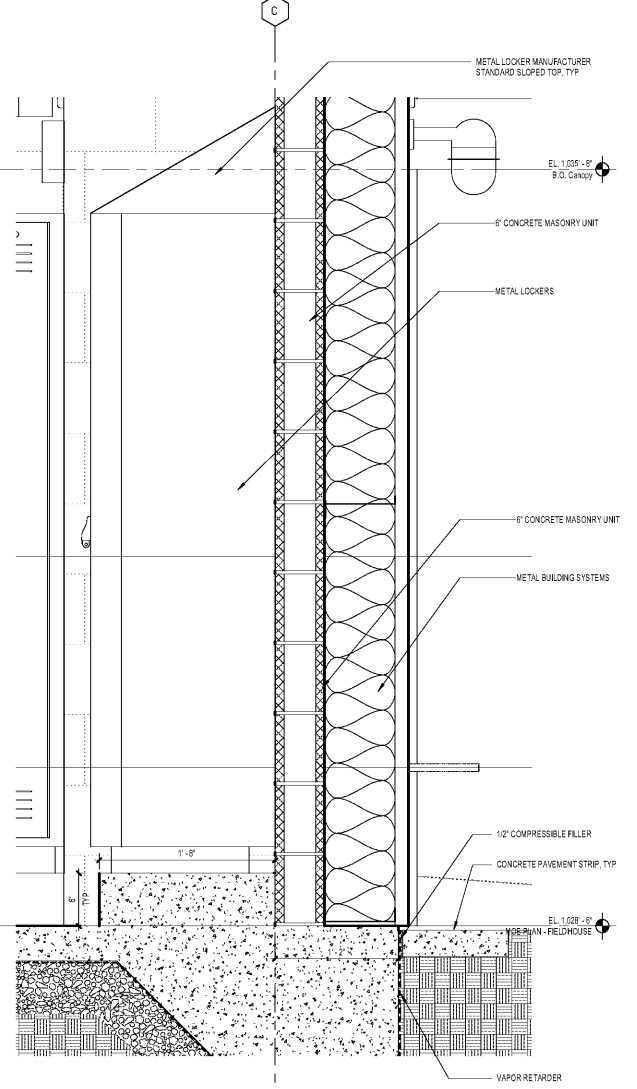
L16 SECTION DETAIL
AF6.01 SCALE: 1 1/2" = 1'-0"



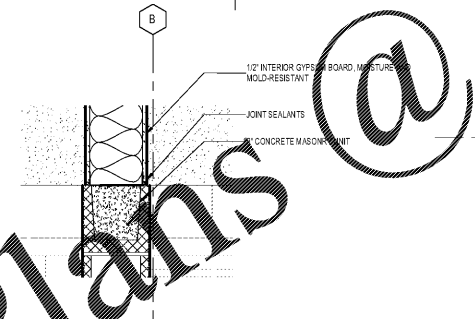
G1 SECTION DETAIL
AF6.01 SCALE: 1 1/2" = 1'-0"



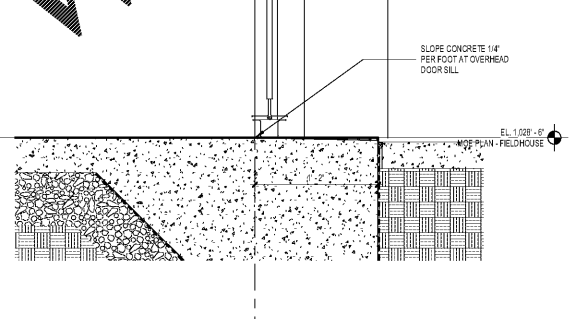
10 SECTION DETAIL
AF6.01 SCALE: 1 1/2" = 1'-0"



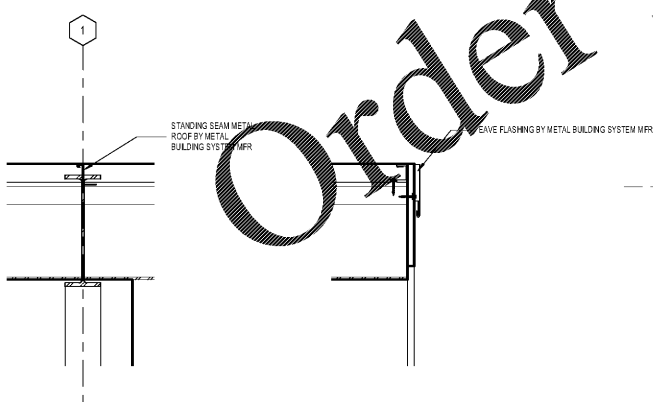
A14 SECTION DETAIL
AF6.01 SCALE: 1 1/2" = 1'-0"



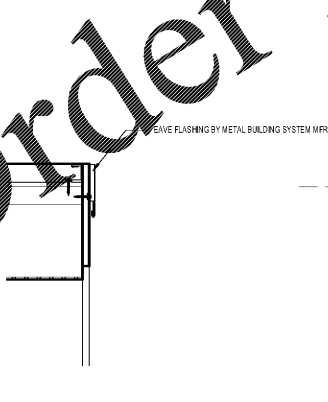
E5 SECTION DETAIL
AF6.01 SCALE: 1 1/2" = 1'-0"



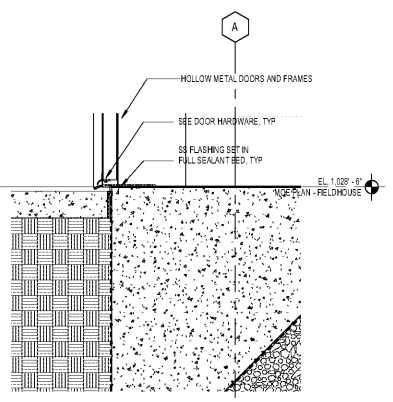
E9 SECTION DETAIL
AF6.01 SCALE: 1 1/2" = 1'-0"



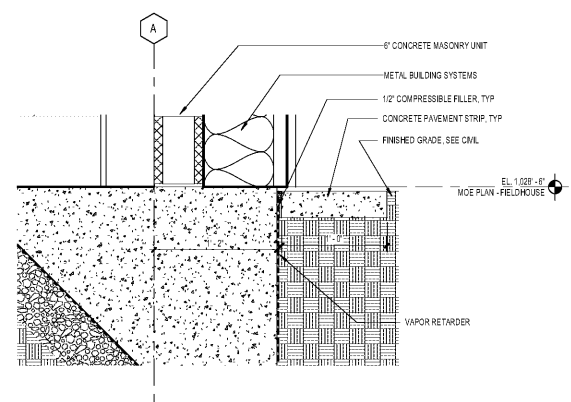
A1 SECTION DETAIL
AF6.01 SCALE: 1 1/2" = 1'-0"



A3 SECTION DETAIL
AF6.01 SCALE: 1 1/2" = 1'-0"



A5 SECTION DETAIL
AF6.01 SCALE: 1 1/2" = 1'-0"



A10 SECTION DETAIL
AF6.01 SCALE: 1 1/2" = 1'-0"

PROJECT NUMBER: 20190224.01 PROJECT NAME: PEBBLEBROOK HS S5B007 - FIELDHOUSE
SHEET NUMBER: AF6.01 - SECTION DETAILS
M:\2018\20180008\7 drawings\4-7-1 rev\Users\20180008_Pebblebrook B007_Fieldhouse_2019_Callahan\01947.rvt
11/1/2019 10:42:54 AM

Order Plans @

WWW.LDILine.com

PEBBLEBROOK HS S5B007 - FIELDHOUSE
DOE Facility Code 7010
FTE = 2787
IU = 143
991 OLD ALABAMA ROAD
MABLETON, GA 30126
COBB COUNTY SCHOOL DISTRICT
SECTION DETAILS

ROBERT JUST 20190224.01
Principal/Designer
SOPHIA TARKHAN 11/04/19
Project Manager
MARC NUNES
Project Architect
WILLIAM CALLAHAN
Staff Architect

AF6.01