



COOPER CARRY
THE CENTER FOR CONNECTIVE ARCHITECTURE

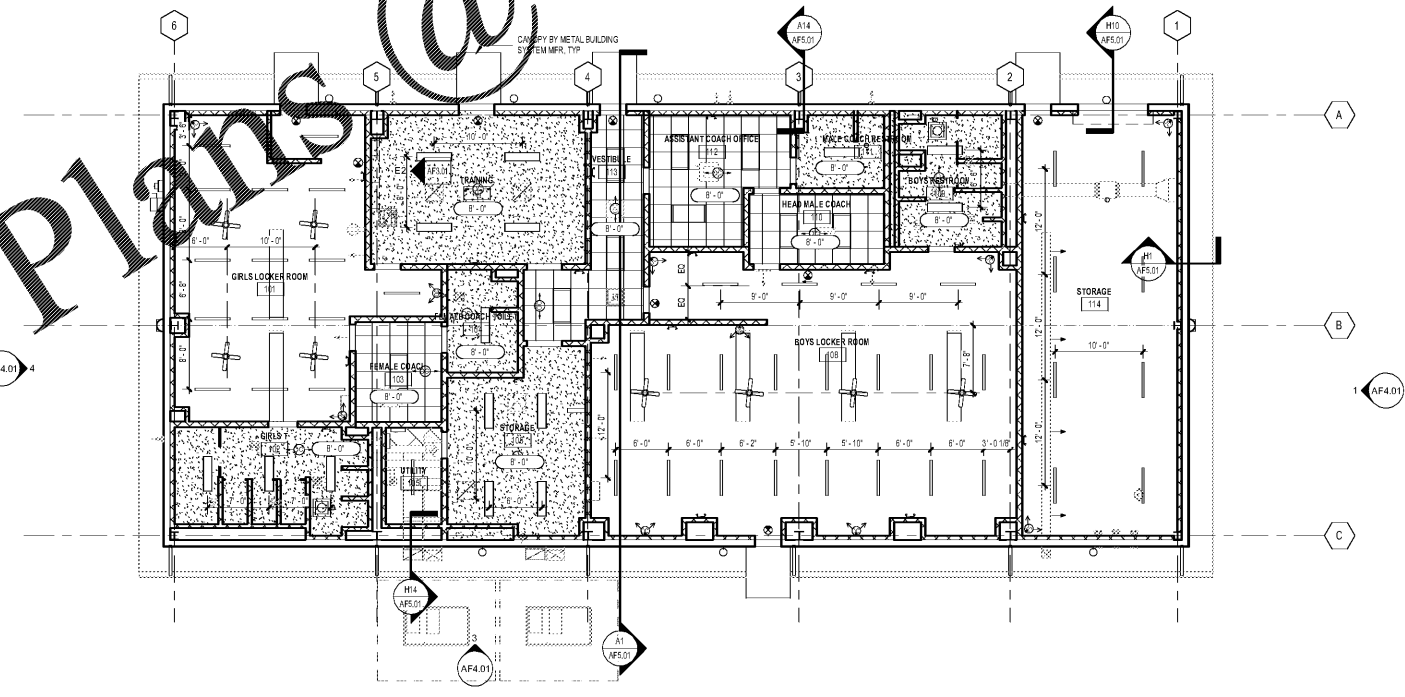
191 Peachtree Street NE
Suite 2400
Atlanta, GA 30303-1770
(404) 237-2000
coopercarry.com

©2019 COOPER CARRY



ISSUANCES		
No.	Drawing Issue Description	Date
1	ISSUED FOR B/D	11/04/19

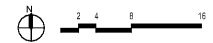
Order Plans @ www.LDILine.com



PROJECT NOTES - RCPs

A. PROJECT NOTES:
 1. PAINT EXPOSED SURFACES PER 09120, PT-1, U.N.O.
 2. ROOMS OPEN TO STRUCTURE (OTS) U.N.O.
 3. SEE ELECTRICAL FOR LIGHTING FIXTURE TYPES
 4. CENTER LIGHT FIXTURE LAYOUT IN ROOM U.N.O.
 5. COORDINATE ACCESS PANEL SIZES AND LOCATIONS PER 220000, PT-1 U.N.O.

1 RCP - FIELDHOUSE
AF2.02 SCALE: 1/8" = 1'-0"



PROJECT NUMBER: 20190224.01 PROJECT NAME: PEBBLEBROOK HS S5B007 - FIELDHOUSE
SHEET NUMBER: AF2.02 - RCP - FIELDHOUSE
M:\2018\20180008\7 drawings\4-7-1 rev\Users\20180008_Pebblebrook B007_Fieldhouse_2019_Callahan\01947.rvt
11/1/2019 10:42:44 AM

**PEBBLEBROOK HS S5B007 -
FIELDHOUSE**
DOE Facility Code 7010
FTE = 2787
IU = 143
991 OLD ALABAMA ROAD
MAPLETON, GA 30126
COBB COUNTY SCHOOL DISTRICT
RCP - FIELDHOUSE

ROBERT JUST 20190224.01
Principal/Designer
SOPHIA TARKHAN 11/04/19
Project Manager
MARC NUNES
Project Architect
WILLIAM CALLAHAN
Staff Architect

AF2.02

ISSUED FOR CONSTRUCTION