



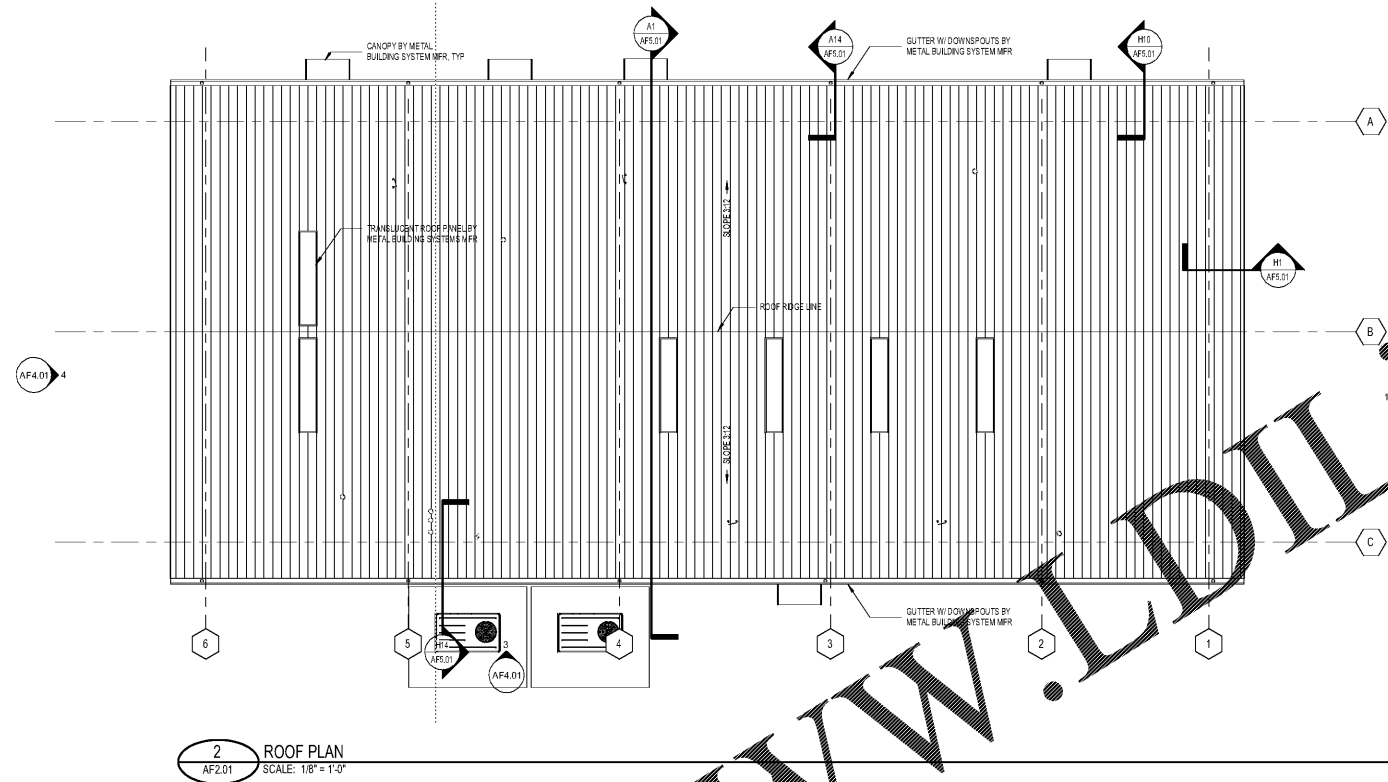
COOPER CARRY
THE CENTER FOR CONNECTIVE ARCHITECTURE

191 Peachtree Street NE
Suite 2400
Atlanta, GA 30303-1770
(404) 237-2000
coopercarry.com

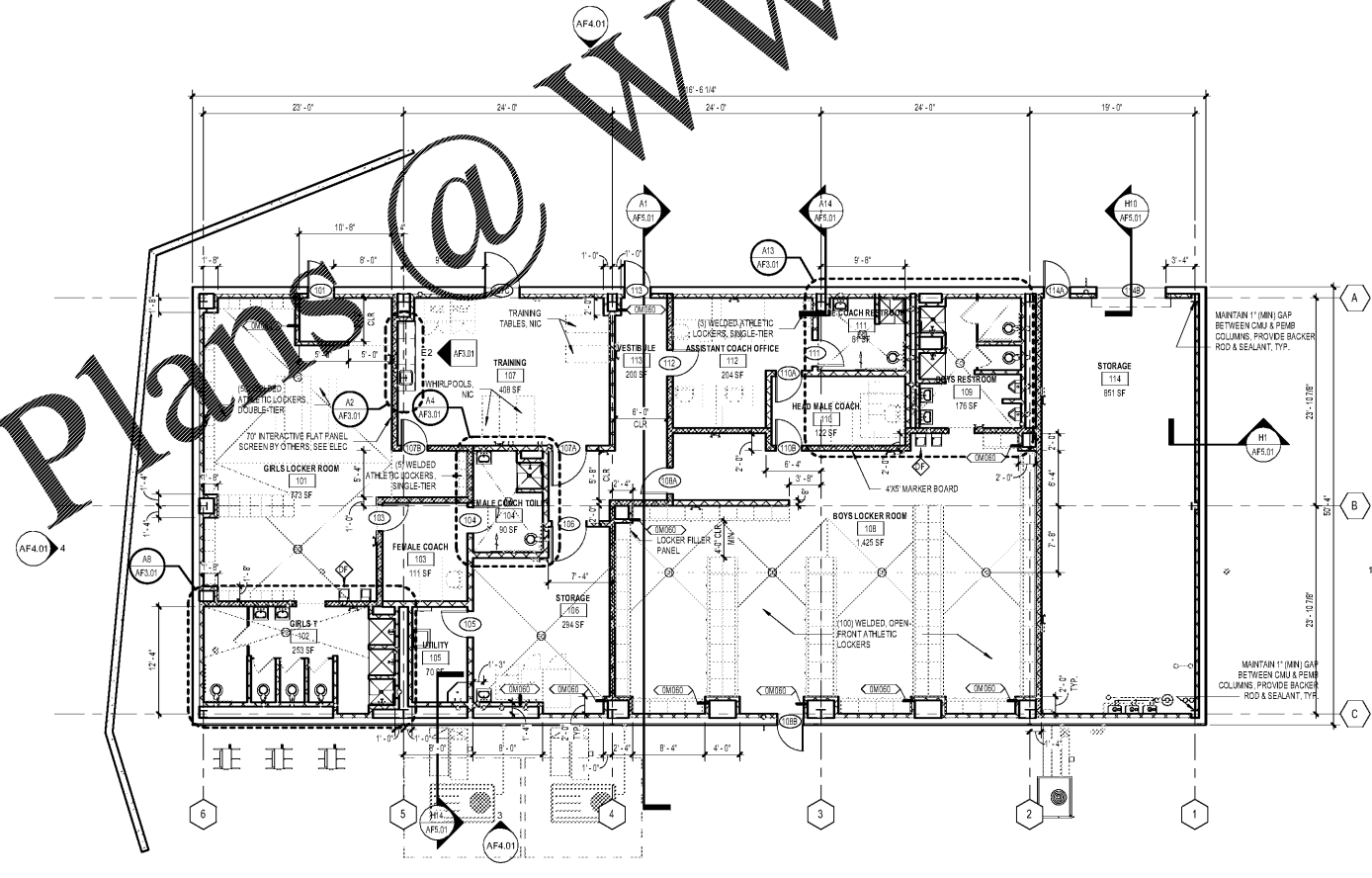
©2019 COOPER CARRY



ISSUANCES		
No.	Drawing Issue Description	Date
0600E	PRELIMINARY SUBMITTAL	07/31/19
1104W	ISSUED FOR B/D	11/04/19



2 ROOF PLAN
AF2.01 SCALE: 1/8" = 1'-0"



1 FLOOR PLAN - FIELDHOUSE
AF2.01 SCALE: 1/8" = 1'-0"

PROJECT NOTES - FLOOR PLANS

A. PROJECT NOTES:

1. WALLS ARE 0MB8 EXTENDED TO 10'-0" U.N.D. GRAY HATCHED WALLS EXTEND TO STRUCTURE WITH 03701 PARTITIONS ABOVE 10'-0". SEE EXHIBIT 1.
2. 1/8" PER FOOT MIN. - X < 1/2" PER FOOT MAX. SLOPE FINISHED FLOOR TO DRAINS. TYP. SEE STRUCTURAL FOR DEPRESSED SLAB AREAS.
3. SEE A/E/S FOR TOILET, BATH, AND LAUNDRY ACCESSORIES MOUNTING LOCATIONS. PROVIDE 3 STANDING SEAT COVER DEPRESSERS ABOVE ALL TOILETS.
4. PROVIDE ADA DRINKING FOUNTAINS (DF) WITH BOTTLE FILLER, TYP.
5. PROVIDE BULLNOSE CMU AT ALL EXPOSED CORNERS ABOVE 8'. TYP.
6. DASHED EQUIPMENT AND FURNITURE NOT IN CONTRACT (NIC) TYP.

FIELDHOUSE (GROSS AREA)	
FIELDHOUSE	5,800 SF
	5,800 SF

PEBBLEBROOK HS S5B007 - FIELDHOUSE
DOE Facility Code 7010
FTE = 2787
IU = 143
991 OLD ALABAMA ROAD
MABLETON, GA 30126
COBB COUNTY SCHOOL DISTRICT
FLOOR PLAN - FIELDHOUSE

ROBERT JUST 20190224.01
Principal/Designer
SOPHIA TARKHAN 11/04/19
Project Manager
MARC NUNES
Project Architect
WILLIAM CALLAHAN
Staff Architect

AF2.01

ISSUED FOR CONSTRUCTION

Order Plans @ www.LDILine.com

PROJECT NUMBER: 20190224.01 PROJECT NAME: PEBBLEBROOK HS S5B007 - FIELDHOUSE
SHEET NUMBER: AF2.01 - FLOOR PLAN - FIELDHOUSE
M:\2018\20180008\07-drawings\4-7-1 rev\Users\20180008_Pebblebrook B007_Fieldhouse_2019_Callahan\01947.rvt
11/11/2019 10:42:43 AM