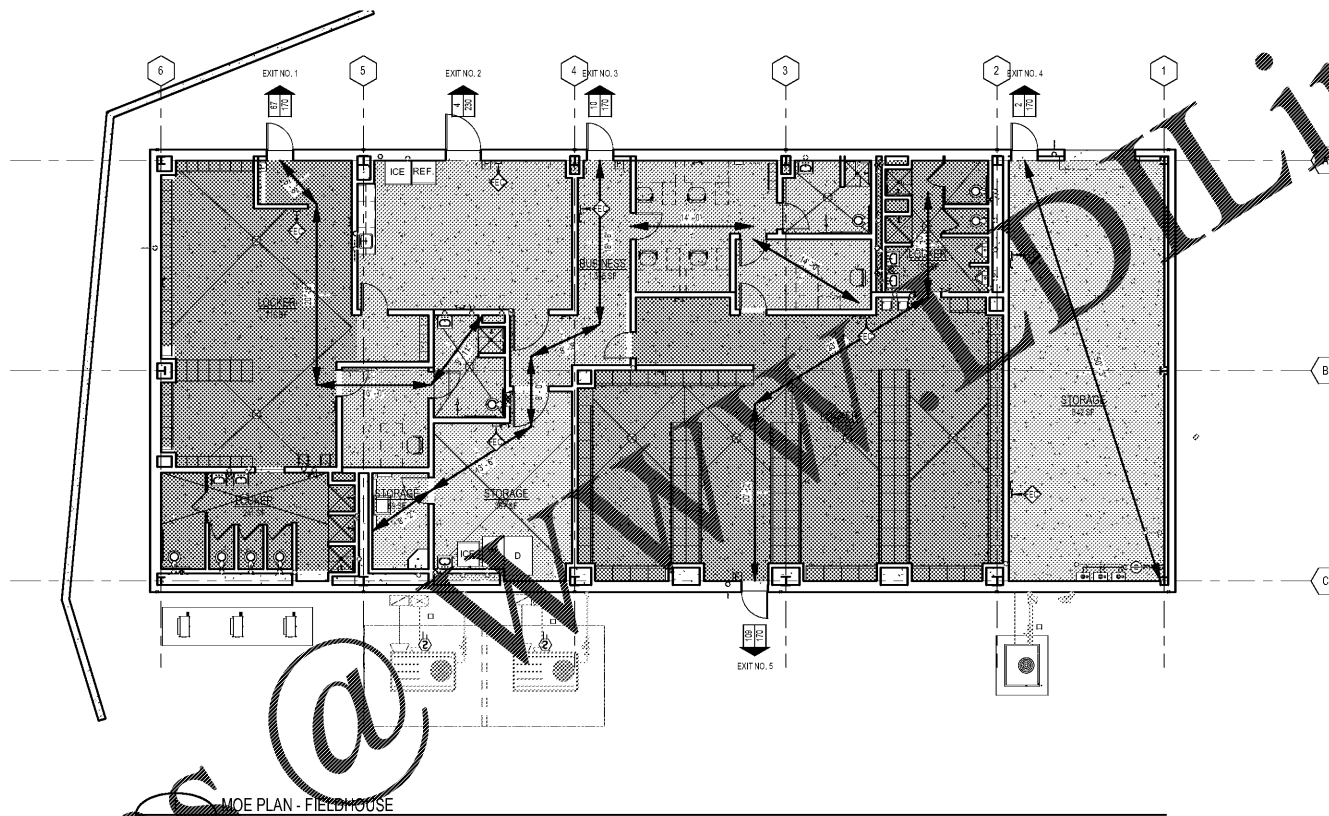




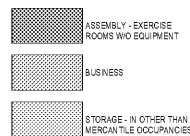
ISSUANCES		
No.	Drawing Issue Description	Date
0600E	PRELIMINARY SUBMITTAL	07/31/19
110419	ISSUED FOR B/D	11/04/19

Order Plans @ www.dlLine.com



MEANS OF EGRESS PLAN - FIELDHOUSE
SCALE: 1/8" = 1'-0"

MEANS OF EGRESS OCCUPANCY LEGEND



PROJECT NUMBER: 20190224.01 PROJECT NAME: PEBBLEBROOK HS S5B007 - FIELDHOUSE
SHEET NUMBER: GF.01 - MEANS OF EGRESS PLAN - FIELDHOUSE
M:\2018\201800008-d-7 drawings\4-7-1 rev\users\20180008_Pebblebrook HS S5B007 - Callahan\01947.rvt
11/11/2019 10:43:19 AM

**PEBBLEBROOK HS S5B007 -
FIELDHOUSE**
DOE Facility Code 7010
FTE = 2787
IU = 143
991 OLD ALABAMA ROAD
MABLETON, GA 30126
COBB COUNTY SCHOOL DISTRICT

**MEANS OF EGRESS PLAN -
FIELDHOUSE**

ROBERT JUST 20190224.01
Principal/Designer
SOPHIA TARKHAN 11/04/19
Project Manager
MARC NUNES
Staff Architect
WILLIAM CALLAHAN
Staff Architect

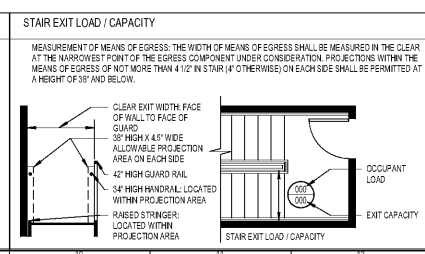
GF1.01

ISSUED FOR CONSTRUCTION

MEANS OF EGRESS LEGEND

WALL RATINGS	DISTANCES
1 HOUR SEPARATION ASSEMBLY OR FIRE PARTITION	COMMON PATH OF TRAVEL (XX FT. MAX.)
2 HOUR SEPARATION ASSEMBLY OR FIRE PARTITION	DEAD END CORRIDOR (XX FT. MAX.)
3 HOUR SEPARATION ASSEMBLY OR FIRE PARTITION	TRAVEL DISTANCE
4 HOUR SEPARATION ASSEMBLY OR FIRE PARTITION	MAX. DIAGONAL DISTANCE
SMOKE SEPARATION ASSEMBLY	EXIT SEPARATION
OCCUPANCY AREA LABELS	
AREA NAME	

LEVEL EXIT LOAD / CAPACITY	
LEVEL EXIT LOAD / CAPACITY @ CORRIDOR	LEVEL EXIT LOAD / CAPACITY @ CORRIDOR
EXIT CAPACITY = DOOR WIDTH - REDUCTION TO ACHIEVE CLEAR OPENING X LOAD FACTOR	EXIT CAPACITY = CLEAR OPENING X LOAD FACTOR
CLEAR EXIT WIDTH	OCCUPANT LOAD
EXIT CAPACITY	EXIT CAPACITY



EXIT CAPACITY:
(IBC TABLE 1005.1 OR LSC TABLE 7.3.3.1)

LEVEL EXITS: EGRESS WIDTH (inches per occupant)	DOOR CAPACITY @ LEVEL EXIT	OCCUPANT LOAD @ LEVEL EXIT
LEVEL EXIT NO. 1 - DOOR 3'-0" EXIT TO GRADE	170	67
LEVEL EXIT NO. 2 - DOOR 4'-0" EXIT TO GRADE	250	4
LEVEL EXIT NO. 3 - DOOR 3'-0" EXIT TO GRADE	170	10
LEVEL EXIT NO. 4 - DOOR 3'-0" EXIT TO GRADE	170	2
LEVEL EXIT NO. 5 - DOOR 3'-0" EXIT TO GRADE	170	198
TOTAL EXIT CAPACITY FOR FLOOR:	910	192

FLOOR LEVEL 1

NFPA 101 LSC - OCCUPANT LOAD SCHEDULE

NAME	OCCUPANT USE GROUP (LSC TABLE 7.3.1.2)	AREA	OCC. LOAD FACTOR	SQFT TYPE	OCCUPANT LOAD
LOCKER	ASSEMBLY - EXERCISE ROOMS W/O EQUIPMENT	241 SF	15	GROSS	17
STORAGE	STORAGE - IN OTHER THAN MERCANTILE OCCUPANCIES	69 SF	500	GROSS	1
LOCKER	ASSEMBLY - EXERCISE ROOMS W/O EQUIPMENT	185 SF	15	GROSS	13
STORAGE	STORAGE - IN OTHER THAN MERCANTILE OCCUPANCIES	842 SF	500	GROSS	2
STORAGE	STORAGE - IN OTHER THAN MERCANTILE OCCUPANCIES	301 SF	500	GROSS	1
LOCKER	ASSEMBLY - EXERCISE ROOMS W/O EQUIPMENT	1,429 SF	15	GROSS	98
LOCKER	ASSEMBLY - EXERCISE ROOMS W/O EQUIPMENT	716 SF	15	GROSS	48
BUSINESS	BUSINESS	1,336 SF	100	GROSS	14
					192