



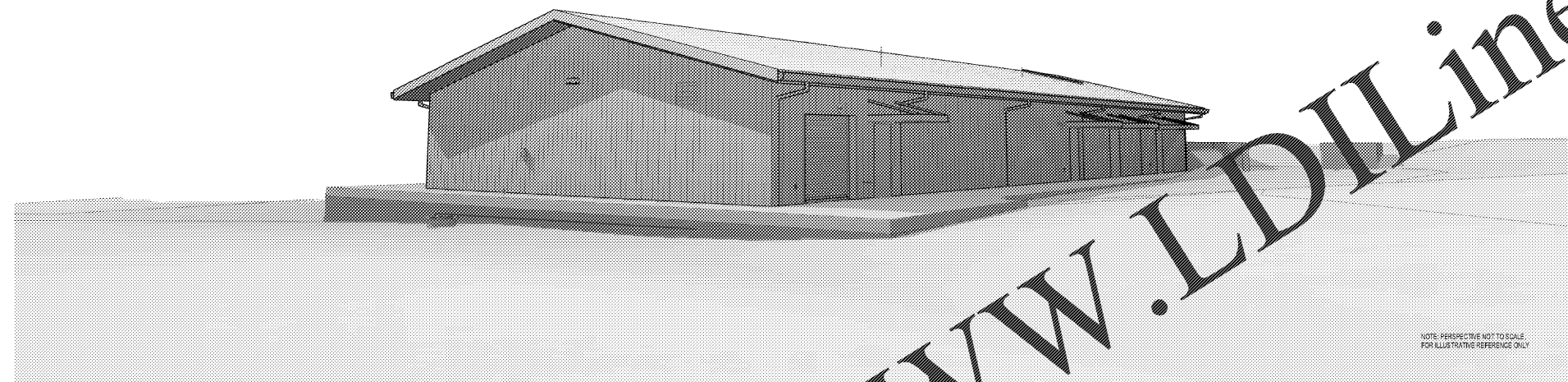
COOPER CARRY
THE CENTER FOR CONNECTIVE ARCHITECTURE

191 Peachtree Street NE
Suite 2400
Atlanta, GA 30303-1770
(404) 237-2000
coopercarry.com

©2019 COOPER CARRY



ISSUANCES		
No.	Drawing Issue Description	Date
0606	PRELIMINARY SUBMITTAL	07/31/19
	ISSUED FOR BID	11/04/19



NOTE: PERSPECTIVE NOT TO SCALE
FOR ILLUSTRATIVE REFERENCE ONLY

PEBBLEBROOK HIGH SCHOOL B007 - FIELDHOUSE

991 OLD ALABAMA ROAD
MABLETON, GA 30126
FIELDHOUSE / NEW CONSTRUCTION

VOLUME #01
NOVEMBER 04, 2019

ISSUED FOR BID

Order Plans @ WWW.LDILine.com

**PEBBLEBROOK HS S5B007 -
FIELDHOUSE**
DOE Facility Code 7010
FTE = 2787
IU = 143
991 OLD ALABAMA ROAD
MABLETON, GA 30126
COBB COUNTY SCHOOL DISTRICT
COVER SHEET

OWNER	ARCHITECT	CIVIL ENGINEER	STRUCTURAL ENGINEER	MEP ENGINEER	HARDWARE	COST ANALYSIS
Cobb County School District 514 Glover St Marietta, GA 30060 tel: (770) 426-3300 www.cobbk12.org	Cooper Carry, Inc. 191 Peachtree Ave NE Suite 2400 Atlanta, GA, 30303 tel: (404) 237-2000 www.coopercarry.com	Eberly & Associates, Inc. Address Line 1 Address Line 2 City, State, 99999 tel: (770) 452-7849 www.eberly.net	PES Engineers 1852 Century Place Suite 201 Atlanta, GA 30345 tel: (770) 457-5923 www.pesengineers.com	Jordan & Skala Engineers, Inc. 4275 Shackelford Rd Norcross, GA 30093 tel: (770) 447-5547 www.jordanskala.com	ALLEGION, PLC 3100 Northwoods Place Suite A Norcross, GA 30071 tel: (770) 266-0336 www.allegion.com	ADE Construction Consultants, Inc. 1296 Rockbridge Road Suite A Stone Mountain, GA 30087 tel: (770) 921-2701 www.adecorconstructionconsultants.com

ROBERT JUST	20190224.01
SOPHIA TARKHAN	11/04/19
MARC NUNES	
WILLIAM CALLAHAN	
	GFO.00

PROJECT NUMBER: 20190224.01 PROJECT NAME: PEBBLEBROOK HS S5B007 - FIELDHOUSE
SHEET NUMBER: GFO.00 - COVER SHEET
M:\2018\20180000\Bldg-7 drawings\Bldg-7-1 rev\Users\20180008_Pebblebrook B007_Fieldhouse_2019_Callahan01947.rvt
11/11/2019 10:43:11 AM