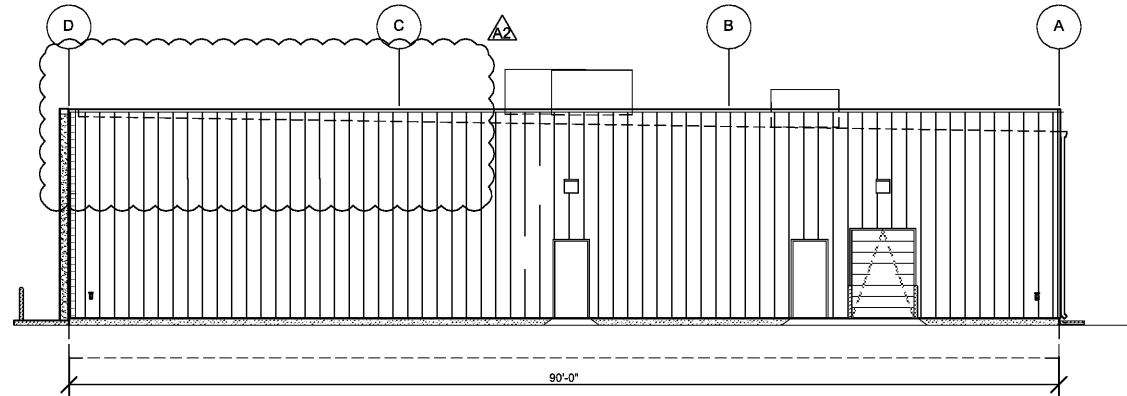


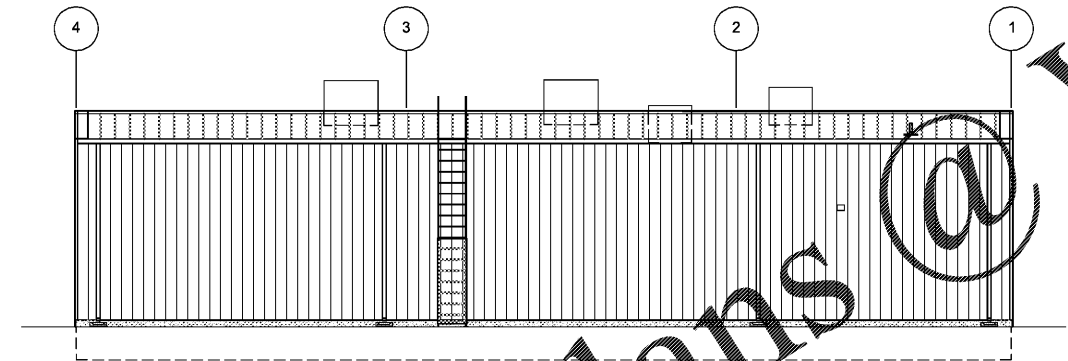
1 FRONT EXTERIOR ELEVATION

SG2.1 SCALE: 1/8" = 1'-0"



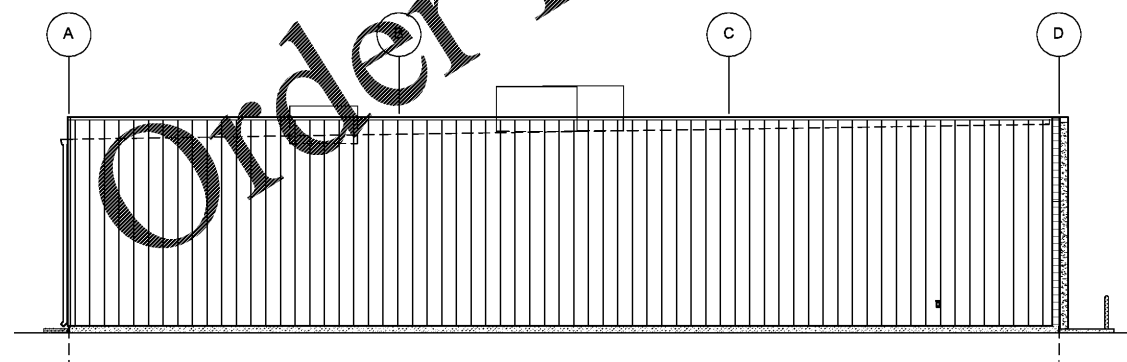
2 RIGHT EXTERIOR ELEVATION

SG2.1 SCALE: 1/8" = 1'-0"



3 REAR EXTERIOR ELEVATION

SG2.1 SCALE: 1/8" = 1'-0"



4 LEFT EXTERIOR ELEVATION

SG2.1 SCALE: 1/8" = 1'-0"

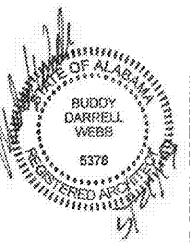
BUILDING SIGN SCHEDULE

- FRONT EXTERIOR ELEVATION:
TYPE: OR 49' 24" AP LINEAR
DETAIL: REFER TO 5/SG2.1
- RIGHT EXTERIOR ELEVATION:
TYPE: NO SIGN
DETAIL:
- LEFT EXTERIOR ELEVATION:
TYPE: NO SIGN
DETAIL:
- REAR EXTERIOR ELEVATION:
TYPE: NO SIGN
DETAIL:

GENERAL NOTES

- A CONTACT OWNER'S OR TENANT'S DESIGNATED PROJECT ADMINISTRATOR FOR QUESTIONS OR CLARIFICATIONS.
- B BUILDING PERMANENT SIGNAGE OWNER FURNISHED AND INSTALLED. (REFER TO SCOPE OF WORK SCHEDULE). SIGNAGE GRAPHICS PROVIDED FOR REFERENCE ONLY (N.I.C.) AND CONTRACTOR'S COORDINATION WITH SPECIFIC PROJECT CONSTRUCTION CONDITIONS. CONTRACTOR TO PROVIDE BACKING AND ROUGH-IN ELECTRICAL AS REQUIRED FOR INSTALLATION. REFER TO A2.1 FOR EXTERIOR BUILDING FINISH.
- C REQUIRED GOVERNMENTAL PERMITS FOR PERMANENT TYPE SIGNAGE TO BE PROVIDED BY OWNER OR OTHERS (N.I.C.).

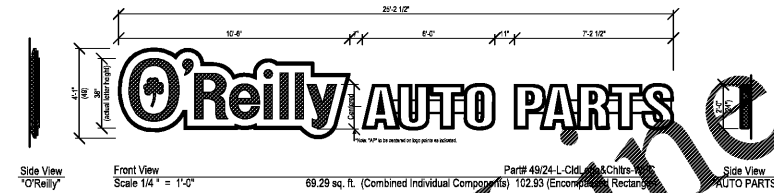
INDIVIDUAL ARCHITECTURAL REGISTRATION NO.: 5378



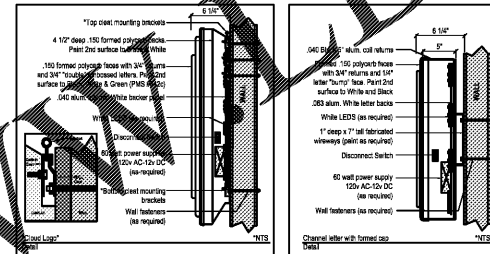
OR INSTRUMENTS ARE DISCLAIMED.



CORPORATE OFFICES
233 SOUTH PATTERSON
SPRINGFIELD, MISSOURI 65802
(417) 862-2674 TELEPHONE



O'Reilly Cloud Logo with "AP" channel letters on 7" (h) x 1" (d) wireway. Wireways per: TBD
 O'Reilly Cloud Logo is formed polycarb with double embossment with 2" surface paint graphics. Paint match to: Green (PMS# 342c), Black and White.
 *AP" to have formed polycarb caps with 1/4" letter "bumps". Black 5" aluminum coil returns. Surface Black and White paint. WHITE LED illumination.



Formed Cloud Logo with "AP" Formed Caps & Channel Returns
 Part# 49/24-L-CldLogo&Chltrs-WFC

5 FRONT WALL SIGN DETAILS

SG1.1 SCALE: 1/4" = 1'-0"

Order Plans @

WWW.DIPLINE.COM

PROJECT:
NEW O'REILLY AUTO PARTS STORE
U.S. HWY 84 & N. BROADWAY
ASHFORD, AL

BUILDING EXTERIOR SIGNAGE

Buddy Webb, NCARB, AIA
 Architect - Consultant
 3057 EAST CAIRO
 SPRINGFIELD, MISSOURI 65802
 (417) 877-1365 TELEPHONE
 (417) 877-8736 FAX

DRAWN BY: CG
 CHECKED BY: SB
 DATE: 04/02/19
 REVISION: 05/21/19
 PROJECT NUMBER: AHF

SHEET NUMBER

SG2.1