

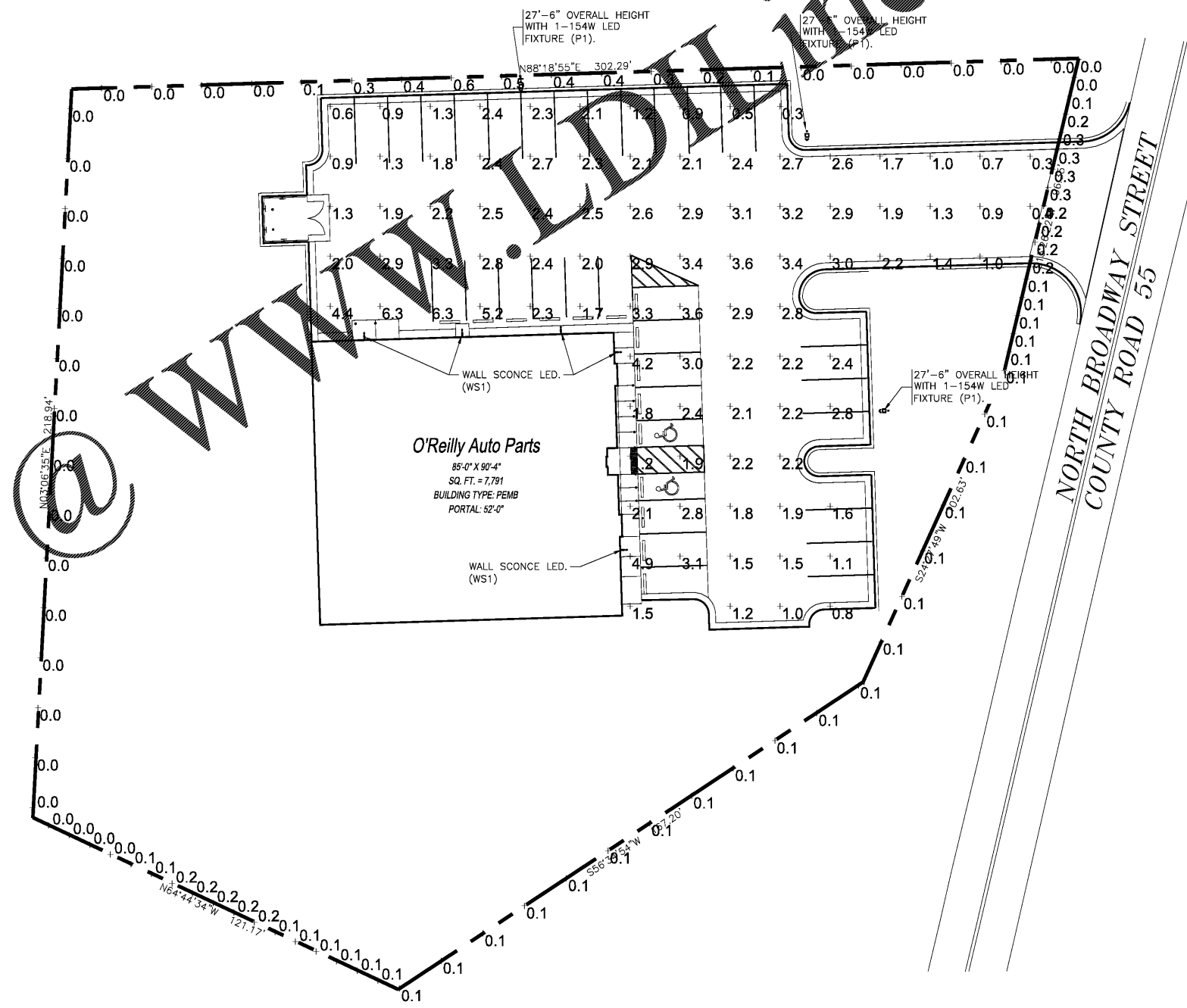
EXTERIOR LIGHT FIXTURE SCHEDULE											
ALL ITEMS LISTED ON THE "LIGHT FIXTURE SCHEDULE" WILL BE SUPPLIED BY THE OWNER (O'REILLY). ITEMS SHALL BE DIRECT ORDERED AND OR RELEASED FROM THE LISTED ELECTRICAL EQUIPMENT DISTRIBUTOR.				GRAYBAR ELECTRIC CO. INC. 11885 LACKLAND ROAD ST. LOUIS, MO 63146			GRAYBAR O'REILLY TEAM EMAIL: oreilly@graybar.com TOLL FREE: (314) 573-2080				
MARK	MFR.	CATALOG NUMBER	SUPPLY VOLTAGE	FINISH	MOUNTING		LAMPS		WATTAGE	NOTES	FIXTURE QUANTITY
					SURF. WALL	SURF. CEILING	FLUORESCENT	LED			
<b>LED EXTERIOR LIGHTS</b>											
WS1	LSI	XWM-FT-LED-08L-50-UE-BRZ NO SUBSTITUTIONS	120	DARK BRONZE	X		X		59	FULL CUT-OFF, BUG RATING B1-U0-G1. ARCHITECTURAL ELEVATIONS SHOW DIMENSIONED LOCATIONS.	5
<b>LED POLE LIGHTS</b>											
P1	LSI	MRM-LED-18L-SIL-FT-UNV-DIM-50-80CR-BRZ-IL 5SQB3-S11G-25-S-BRZ-LAB-5BC	120	DARK BRONZE		X	X		154	25' POLE LENGTH, ADVANCE BALLASTS, FULL CUT-OFF, NO SUBSTITUTIONS. ANCHOR BOLTS W/HARDWARE & TEMPLATE. WITH INTERNAL LOUVER HOUSE SIDE SHIELD. BUG RATING B2-U0-G3.	3
FIXTURE QUANTITY TO BE VERIFIED WITH SITE PLAN QUANTITY											

BACKLIGHT-UPLIGHT-GLARE (BUG) RATING / FULL CUTOFF						
SEE CUT-SHEET ON SP SHEETS AND SCHEDULE BELOW FOR EXTERIOR LIGHT FIXTURES. ALL OF THE LSI MRM & XWM LED FIXTURES HAVE ZERO UPLIGHT AND ARE CONSIDERED "FULL CUT OFF" AND DARKSKY COMPLIANT. SP SHEETS AND BELOW DELIVERED LUMENS SCHEDULE HAS "BUG" RATINGS, AS TESTED TO IDENTIFY HOW MUCH OF THE LIGHT GOES BACKWARDS, UPWARDS AND TO THE GROUND. THE CHART SHOWS THAT THESE FIXTURES HAVE BUG RATINGS WITH (UPLIGHT) U = 0.						
LSI Outdoor LED Fixture BUG Summary						
Fixture Lumens	Fixture Watts	Lumens/Watt	IES Class	Light Class	Beam Class	BUG Rating
8,371	84	122	Type III	Medium	81430-G2	
6,921	94	121	Type IV	Short	81430-G2	

**AUTOMATIC LIGHTING CONTROL**

COMPLIANCE WITH ENERGY CODE IS ACHIEVED BY:

- ONCE THE EMS HAS BEEN PROGRAMMED, THE INTERIOR AND EXTERIOR LIGHTS WILL TURN ON AND OFF USING THE FOLLOWING LOGIC: SEE EM SHEETS.
  - INTERIOR WORK LIGHTS WILL TURN ON WITH FIRST MOTION IN THE STORE AND WILL TURN OFF 15 MINUTES AFTER LAST MOTION ONCE THE STORE IS CLOSED.
  - INTERIOR SALES LIGHTS WILL TURN ON AT STORE OPENING AND TURN OFF 15 MINUTES AFTER STORE CLOSING.
  - EXTERIOR SIGN LIGHTS WILL TURN ON WHEN ITS DARK ENOUGH OUTSIDE ANYTIME DURING STORE HOURS, AND WILL TURN OFF AT STORE CLOSING.
  - EXTERIOR SITE LIGHTS WILL TURN ON WHEN IT IS DARK ENOUGH OUTSIDE AND IT IS WITHIN STORE HOURS OR THERE IS MOTION IN THE STORE. THEY WILL TURN OFF 30 MINUTES AFTER LAST MOTION ONCE THE STORE IS CLOSED.
  - FOR NEW CONSTRUCTION LOCATIONS ONLY, THERE IS A TEMPORARY PROGRAM TO KEEP SIGN AND SITE LIGHTS ON UNTIL MIDNIGHT RATHER THAN THE TIMES INDICATED ABOVE. O'REILLY WILL DISABLE THIS PROGRAM ONE YEAR AFTER STORE OPENING.
- RESTROOMS AND OFFICES: ALL LIGHTING IN THESE AREAS ARE CONTROLLED BY OCCUPANT-SENSING DEVICES.



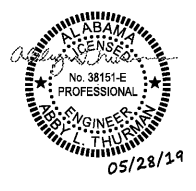
Order Plans

**SITE LIGHTING PHOTOMETRICS**

SCALE: 1" = 20'-0"



SHEET CHANGED  
IN ITS ENTIRETY.



SHEETS BEARING THIS SEAL ARE AUTHENTICATED. RESPONSIBILITY FOR ALL OTHER PLANS, SPECIFICATIONS OR INSTRUMENTS ARE DISCLAIMED.

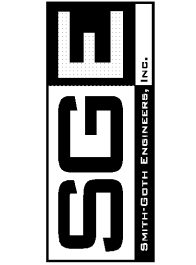
**O'Reilly AUTO PARTS**

CORPORATE OFFICES  
233 SOUTH PATTERSON  
SPRINGFIELD, MISSOURI 65802  
(417) 862-2674 TELEPHONE

PROJECT:  
**NEW O'REILLY AUTO PARTS STORE**  
U.S. HWY 84 & N. BROADWAY  
ASHFORD, AL

**SITE LIGHTING PHOTOMETRICS**

3855 S. JEFFERSON AVE.  
SPRINGFIELD, MO 65807  
P: 417-882-2200  
F: 417-882-1188  
WWW.BMTGROUP.COM



DRAWN BY: CEV  
CHECKED BY: NEG  
DATE: 04/02/19  
REVISION:  
ADDENDUM 3 (05/28/19)  
PROJECT NUMBER: AHF  
SHEET NUMBER

SP1

DESIGNS, DRAWINGS AND SPECIFICATIONS ARE INSTRUMENTS OF SERVICE AND ARE THE PROPERTY OF THE DESIGN PROFESSIONAL. REPRODUCTION PROHIBITED WITHOUT THE EXPRESSED WRITTEN CONSENT OF THE DESIGN PROFESSIONAL. © COPYRIGHT 2018-2019