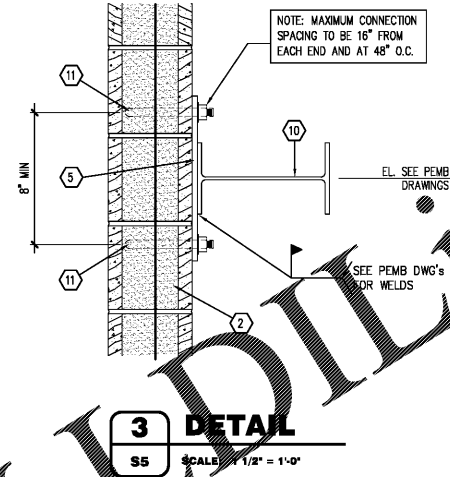
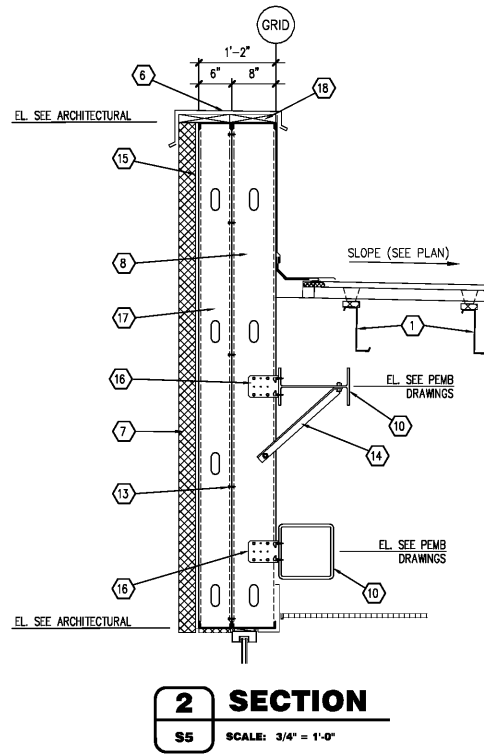
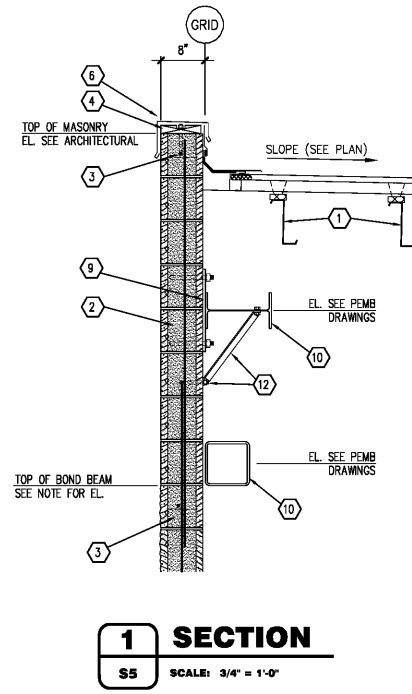


Order Plans @ [www.edilinc.com](http://www.edilinc.com)



**KEYNOTES**

- 1 PRE-ENGINEERED METAL BUILDING STRUCTURAL SYSTEM. SEE P.E.M.B. SHOP DRAWINGS FOR ADDITIONAL INFORMATION.
- 2 8" (NOM) SPLIT FACE OR SMOOTH FACE CMU. REFER TO STRUCTURAL NOTES ON SHEET S1 FOR WALL VERTICAL AND HORIZONTAL REINFORCEMENT
- 3 CONTINUOUS 8" (NOM) SPLIT FACE OR SMOOTH FACE UNTEL BLOCK OR BOND BEAM W/ (1) #5 CONT.
- 4 CONTINUOUS FIRE TREATED 2x NAILER WITH 1/2" GALVANIZED ANCHOR BOLTS @ 32" O.C.
- 5 CONNECTION PLATE BY PEMB. FIELD WELD METAL SHIMS TO WIND BEAM AS SHOWN. SHIMS TO BE PROVIDED BY CONTRACTOR AS REQUIRED.
- 6 REFER TO ARCHITECTURAL FOR ALL ROOF FLASHING REQUIREMENTS
- 7 EXTERIOR INSULATION FINISH SYSTEM, REFER TO ARCHITECTURAL
- 8 8"x16 ga. METAL STUDS (800S162-54) @ 24" O.C.
- 9 REFER TO DETAIL 3/SS FOR CONNECTION OF WIND BEAM TO MASONRY. SEE PEMB DRAWINGS FOR WIND BEAM W/ DRILLING
- 10 PRE-ENGINEERED METAL BUILDING WINDOW. SEE P.E.M.B. SHOP DRAWINGS FOR SIZE AND LOCATION
- 11 ANCHOR WIND BEAM TO WALL BY DRILLING 3/4"x0'-6 1/2" DEEP HOLES INTO MASONRY FOR (2) 1/2"x0'-8 1/2" A36 ALL-THREAD RODS IN FULLY GROUTED CELLS. APPLY ADHESIVE AND INSTALL ANCHORS PER ADHESIVE ANCHOR INSTALLATION NOTES.
- 12 SEE PEMB SHOP DRAWINGS FOR WIND BEAM BRACING REQUIREMENTS. DRILL 3/8"x0'-4 1/2" DEEP HOLES INTO MASONRY FOR (1) 1/2"x0'-5 1/2" A36 ALL-THREAD ROD IN FULLY GROUTED CELLS. SEE SHEET S1 FOR ADHESIVE INFORMATION.
- 13 CONNECT STUDS TOGETHER WITH #12 SCREWS @ 24" O.C.
- 14 PRE-ENGINEERED METAL BUILDING BRACING. SEE P.E.M.B. SHOP DRAWINGS. FIELD DRILL HOLES IN STUDS FOR 1/2" BOLTED CONNECTIONS
- 15 REFER TO ARCHITECTURAL DRAWINGS FOR EXTERIOR WALL SHEATHING. WALL SHEATHING SHALL BE ATTACHED TO EACH STUD AS PER SHEATHING MANUFACTURER'S REQUIREMENTS FOR WIND PRESSURES INDICATED ON SHEET S1. MINIMUM ATTACHMENT REQUIREMENT TO BE #8 CORROSION-RESISTANT (1" LONG) SCREWS @ 8" O.C. AT PERIMETER OF SHEETS AND AT 8" O.C. IN THE INTERIOR FIELD.
- 16 16 ga SIMPSON FCB43.5 CONNECTOR W/ (4) #12-14 SCREWS TO STUDS AND (2) #12-24 TO MIN. 3/16" THICK STEEL
- 17 6"x16 ga. METAL STUDS (800S162-54) @ 24" O.C.
- 18 CONTINUOUS FIRE TREATED 2x NAILERS W/ (2) ROWS #10 SCREWS TO TOP TRACK @ 24" O.C. STAGGERED

**MASONRY NOTES**

1. IN ALL CASES, THREADED ROD ANCHORS ARE TO BE INSTALLED IN GROUTED CELLS.
2. SOLIDLY GROUT ALL CELLS & COURSES FROM BOND BEAM AT ELEVATION 111'-4" TO TOP OF WALL.
3. ANCHORS SHALL NOT BE LOCATED WITHIN 1 1/2" OF ANY MASONRY HEAD JOINTS. ANCHOR SPACING MAY BE ADJUSTED 2" TO AVOID HEAD JOINTS.



SHEETS BEARING THIS SEAL ARE AUTHENTICATED. RESPONSIBILITY FOR ALL OTHER PLANS, SPECIFICATIONS OR INSTRUMENTS ARE DISCLAIMED.

**O'Reilly AUTO PARTS**  
CORPORATE OFFICES  
233 SOUTH PATTERSON  
SPRINGFIELD, MISSOURI 65802  
(417) 862-2674 TELEPHONE

PROJECT:  
**NEW O'REILLY AUTO PARTS STORE**  
U.S. HWY 84 & N. BROADWAY  
ASHFORD, AL  
**FRAMING DETAILS**

JS Smith Consulting Engineers  
Alabama State Certificate of Authorization CA-2283-E  
Aaron D. Smith P.E. 24301  
1801 W 32nd St. Bldg 6 Ste 104 - JOPLIN, MISSOURI 64804  
O. Box 9111 - JOPLIN, MISSOURI 64802  
PHONE: 417-624-0444 FAX: 417-624-0636



DRAWN BY: **MW** CHECKED BY: **AS**  
DATE: **04/02/19**  
REVISION:

PROJECT NUMBER:  
**AHF**

SHEET NUMBER  
**S5**

© COPYRIGHT 2019 | DESIGNS, DRAWINGS AND SPECIFICATIONS ARE INSTRUMENTS OF SERVICE AND ARE THE PROPERTY OF THE DESIGN PROFESSIONAL. REPRODUCTION PROHIBITED WITHOUT THE EXPRESSED WRITTEN CONSENT OF THE DESIGN PROFESSIONAL.