

FOUNDATION PLAN
SCALE: 1/8" = 1'-0"



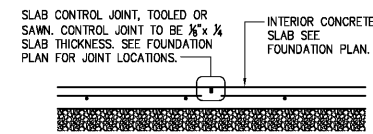
KEYNOTES

- 1 SLAB HAIRPIN. SEE DETAIL 11/S3.1
- 2 PROVIDE #4x4'-0" DOWEL TURN 45 DEGREES AT SLAB INSIDE CORNERS
- 3 CONTROL OR CONSTRUCTION JOINT SEE DETAILS 1 & 2/S2
- 4 SIDEWALK: PROVIDE 4" THICK CONCRETE REINFORCED W/ #5'S @ 18" O.C. EACH WAY (PLACED AT MID-HEIGHT OF SLAB) OVER COMPACTED SUB-BASE MATERIAL (AS DIRECTED BY THE GEOTECHNICAL REPORT OR ONSITE GEOTECHNICAL ENGINEER) PROPERLY PREPARED SUBGRADE. SEE CIVIL DRAWINGS FOR JOINT REQUIREMENTS, EXTENTS OF FLATWORK, AND TOP OF CONCRETE SPOT ELEVATIONS.
- 5 STEEL BOLLARD: SEE SITE DEVELOPMENT PLANS AND DETAILS. (WHERE APPLICABLE, ALIGN WITH CENTERLINE OF STOREFRONT MULLIONS AND JAMBS OF OVERHEAD DOOR.)
- 6 4'x4' (MIN.) DOORPAD: PROVIDE 4" THICK CONCRETE REINFORCED W/ #5'S @ 18" O.C. EACH WAY (PLACED AT MID-HEIGHT OF SLAB) OVER COMPACTED SUB-BASE MATERIAL (AS DIRECTED BY THE GEOTECHNICAL REPORT OR ONSITE GEOTECHNICAL ENGINEER) ON PROPERLY PREPARED SUBGRADE. CENTER PAD ON DOOR. SEE CIVIL DRAWINGS FOR TOP OF CONCRETE SPOT ELEVATIONS.
- 7 6" WIDE DOORPAD: PROVIDE 4" THICK CONCRETE REINFORCED W/ #5'S @ 18" O.C. EACH WAY (PLACED AT MID-HEIGHT OF SLAB) OVER COMPACTED SUB-BASE MATERIAL (AS DIRECTED BY THE GEOTECHNICAL REPORT OR ONSITE GEOTECHNICAL ENGINEER) ON PROPERLY PREPARED SUBGRADE. EXTEND CONCRETE 1'-6" PAST DOOR JAMBS. SEE CIVIL DRAWINGS FOR TOP OF CONCRETE SPOT ELEVATIONS.
- 8 ISOLATION JOINT. SEE DETAIL 3/S2 (SPACING NOT TO EXCEED 30'-0" O.C.)
- 9 DETECTABLE WARNING SURFACE (IF REQUIRED), REFER TO CIVIL DRAWINGS FOR ADDITIONAL INFORMATION.

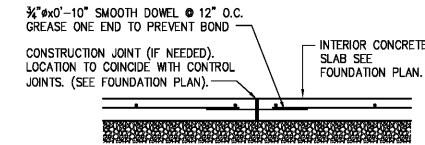
FOUNDATION SCHEDULE

MARK	FOOTING SIZE (W x L x H)	FOOTING REINFORCEMENT		BOTTOM OF FOOTING ELEVATION	PILASTER SIZE	PILASTER REINFORCEMENT		TOP OF PILASTER ELEVATION	MARK
		LONG	TRANS.			VERT.	TIES		
F1	3'-6"x3'-6"x6"	(5) #5's	(5) #5's	97'-6"					F1
F2	1'-0"x4'-0"x6"	(5) #5's	(6) #5's	97'-6"					F2
F3	8"x4'-6"x6"	(5) #4 EACH WAY TOP & BOT.		96'-0"	SEE 8/S3.2	(12) #6	SEE 9/S3.2	99'-4"	F3
F4	3'-3"x3'-0"x6"	(4) #5's	(4) #5's	97'-6"					F4
F5	3'-0"x3'-0"x1'-6"	(4) #5's	(4) #5's	97'-6"					F5
F6	1'-0"x3'-0"x1'-6"	(4) #5's	(4) #5's	97'-6"					F6
F7	4'-0"x4'-0"x1'-6"	(6) #5's	(6) #5's	97'-6"					F7

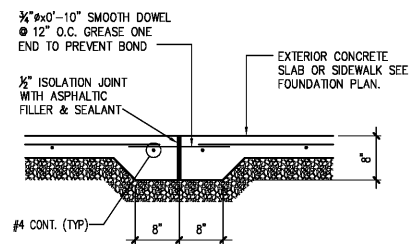
- NOTES:
1. ALL ANCHOR BOLTS SHALL BE SIZE, QUANTITY AND SPACING AS SPECIFIED BY THE PRE-ENGINEERED METAL BUILDING MANUFACTURER. MAINTAIN 3" MINIMUM CONCRETE COVER AROUND BOLTS. TIES SHALL WRAP AROUND ANCHOR BOLTS.
 2. COLUMN BASE PLATES ARE TO REST ON TOP OF SLAB. PROVIDE LEVEL BEARING SURFACE FOR EVEN CONTACT.
 3. COLUMN FOOTING REINFORCEMENT TO BE INTEGRAL WITH CONTINUOUS FOUNDATION REINFORCEMENT (WHERE APPLICABLE).
 4. ALL SPREAD FOOTINGS ARE TO BE CENTERED BENEATH COLUMNS UNLESS NOTED OTHERWISE.
 5. PROVIDE ANCHOR BOLT TEMPLATES AT COLUMN.



1 TYP. CONTROL JOINT DETAIL
SCALE: 3/4" = 1'-0"



2 TYP. CONSTR. JOINT DETAIL
SCALE: 3/4" = 1'-0"



3 SIDEWALK ISOLATION JOINT
SCALE: 3/4" = 1'-0"



SHEETS BEARING THIS SEAL ARE AUTHENTICATED. RESPONSIBILITY FOR ALL OTHER PLANS, SPECIFICATIONS OR INSTRUMENTS ARE DISCLAIMED.

O'Reilly AUTO PARTS
CORPORATE OFFICES
233 SOUTH PATTERSON
SPRINGFIELD, MISSOURI 65802
(417) 862-2674 TELEPHONE

PROJECT: **NEW O'REILLY AUTO PARTS STORE**
U.S. HWY 84 & N. BROADWAY
ASHFORD, AL

FOUNDATION PLAN

JS Smith Consulting Engineers
Alabama State Certificate of Authorization CA-2283-E
Aaron D. Smith P.E. 24301
1801 W 32nd St. Bldg 6 Ste 104 - JOPLIN, MISSOURI 64804
P.O. Box 917 - JOPLIN, MISSOURI 64802
PHONE: 417-624-0444 FAX: 417-624-0636

DRAWN BY: **MW** CHECKED BY: **AS**
DATE: **04/02/19**
REVISION:

PROJECT NUMBER:
AHF

SHEET NUMBER
S2