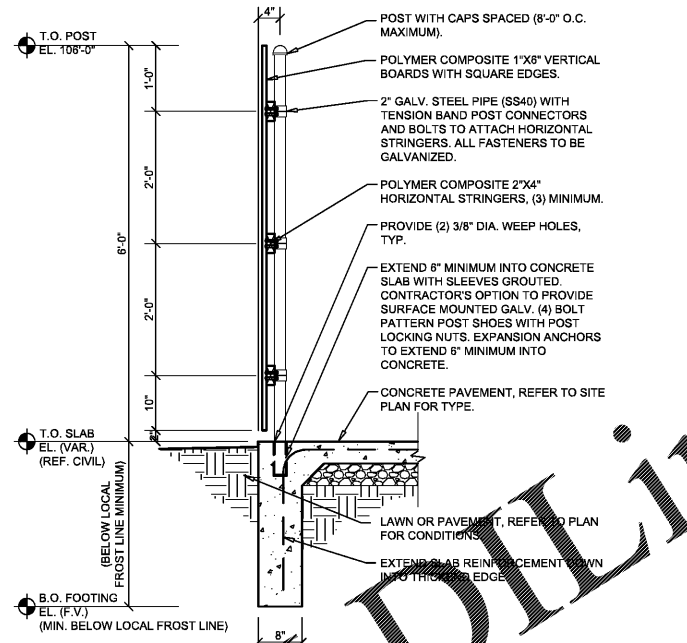
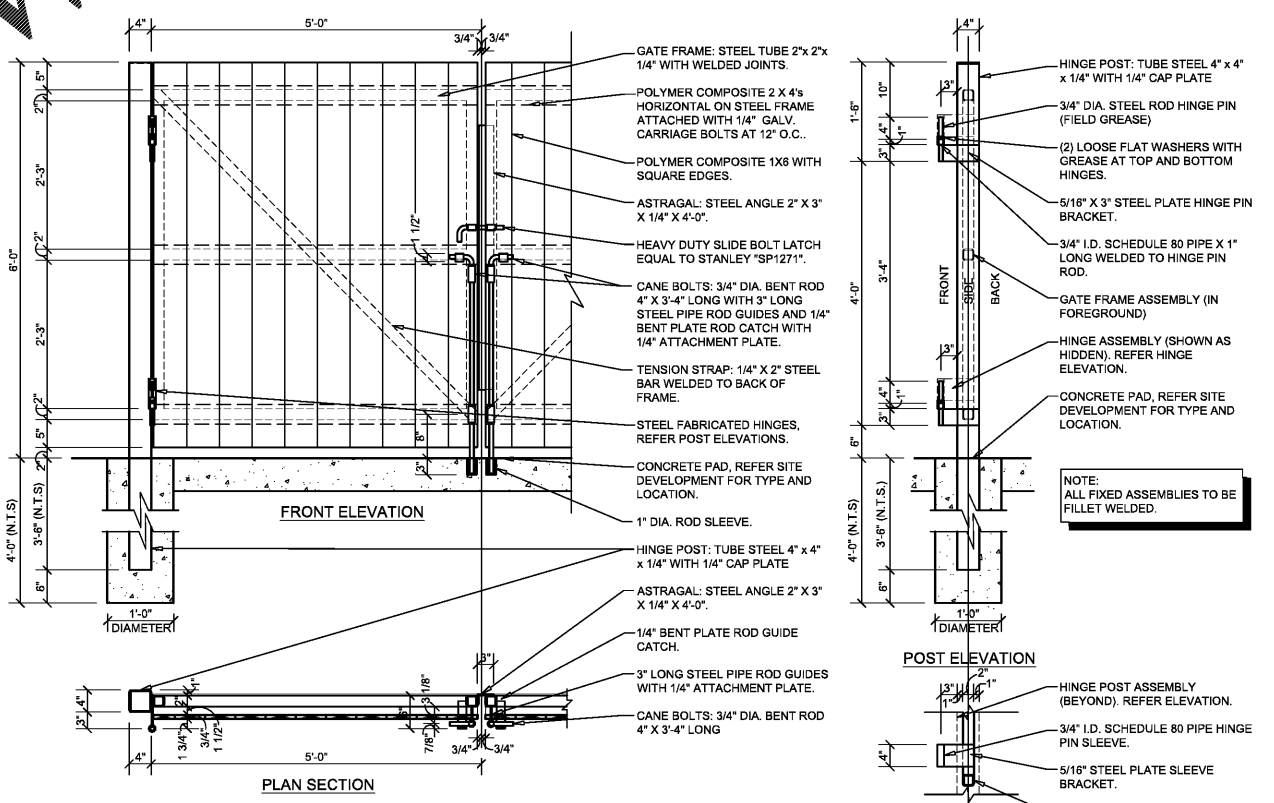


1 POLYMER COMPOSITE MATERIAL SCREEN FENCE REFUSE ENCLOSURE PLAN
 C2.3 SCALE: 3/4" = 1'-0"



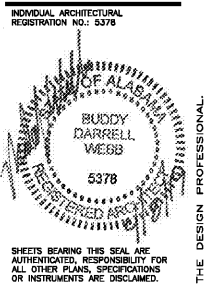
2 SCREEN FENCE SECTION
 C2.3 SCALE: 3/4" = 1'-0"



3 SCREEN FENCE GATE DETAILS
 C2.3 SCALE: 3/4" = 1'-0"

GENERAL NOTES

- A REFER TO PROJECT MANUAL FOR ADDITIONAL REQUIREMENTS.
- B DIMENSIONS ARE TO ROUGH FACE OF CONCRETE, FRAMING, OR CENTER LINE OF STRUCTURE UNLESS OTHERWISE INDICATED.
- C REFER TO CIVIL DRAWINGS FOR ADDITIONAL REQUIREMENTS.
- D REFER TO ARCHITECTURAL EXTERIOR FINISH SCHEDULE FOR MATERIAL TYPES, COLORS, AND FINISHES. UNLESS OTHERWISE INDICATED PROVIDE FINISHES AS FOLLOWS:
 1. ALL NON-GALVANIZED METAL PARTS TO BE PRIMED AND PAINTED (2) COATS SHERWIN WILLIAMS SW8488 "HUNT CLUB".
 2. POLYMER COMPOSITE MATERIAL COLOR TO BE EQUAL TO "TREV" DECKING SERIES "PEBBLE SAND". FINAL COLOR TO BE SELECTED BY OWNER FROM MANUFACTURER'S STANDARD SAMPLES.



Reilly AUTO PARTS
 CORPORATE OFFICES
 233 SOUTH PATTERSON
 SPRINGFIELD, MISSOURI 65802
 (417) 862-2674 TELEPHONE

PROJECT:
 NEW O'REILLY AUTO PARTS STORE
 U.S. HWY 84 & N. BROADWAY
 ASHFORD, AL

SITE DEVELOPMENT DETAILS

Buddy Webb, NCARB, AIA
Architect - Consultant
 3057 EAST CAIRO
 SPRINGFIELD, MISSOURI 65802
 (417) 877-1365 TELEPHONE
 (417) 877-9736 FAX

DRAWN BY: CG
CHECKED BY: SB
DATE: 04/02/19
REVISION:
PROJECT NUMBER: AHF
SHEET NUMBER:

C2.3

Order Plans @ WWW.IDIline.com

© COPYRIGHT 2019 - DESIGNS, DRAWINGS AND SPECIFICATIONS ARE INSTRUMENTS OF SERVICE AND ARE THE PROPERTY OF THE DESIGN PROFESSIONAL. REPRODUCTION PROHIBITED WITHOUT THE EXPRESSED WRITTEN CONSENT OF THE DESIGN PROFESSIONAL.