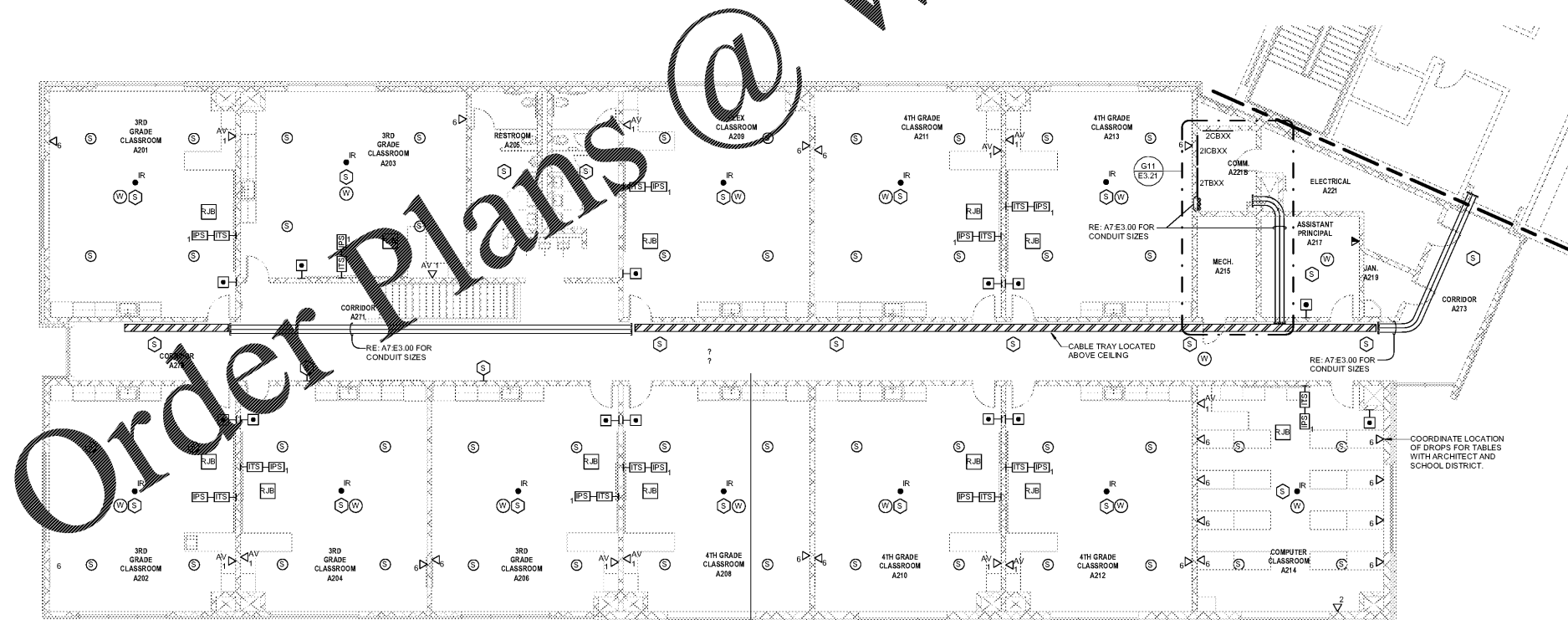
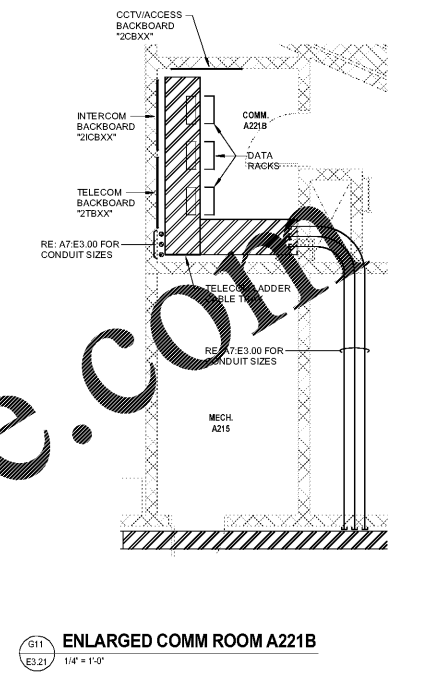


10/28/2019 4:59:27 PM

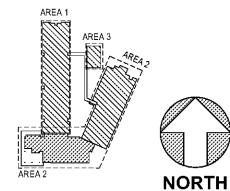


A2 E3.21 SECOND LEVEL FLOOR PLAN - CLASSROOM ADDITION - TECHNOLOGY & COMMUNICATIONS
1/8" = 1'-0"



G11 E3.21 ENLARGED COMM ROOM A221B
1/4" = 1'-0"

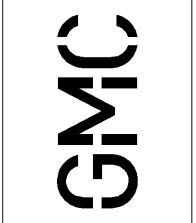
KEY PLAN



Order Plans @ www.LDILine.com

MILLBROOK ELEMENTARY SCHOOL - ADDITIONS AND RENOVATIONS
255 E PINE LOG RD, AIKEN, SC 29803
GMC # ACOL180004

SECOND LEVEL FLOOR PLAN - CLASSROOM ADDITION - TECHNOLOGY AND COMMUNICATIONS
E3.21



1219 Wayne Street
Columbia, SC 29201
T 803.766.1235
GMCNETWORK.COM



Buford Goff & Associates, Inc.
Engineers & Planners
1433 Boulevard Ave.
Columbia, SC 29204
Phone: 803.766.1235

ISSUE	DATE
BID DOCUMENTS	10.24.19

DRAWN BY: MTFH
CHECKED BY: BCM