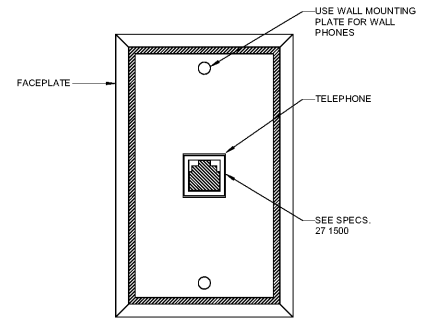
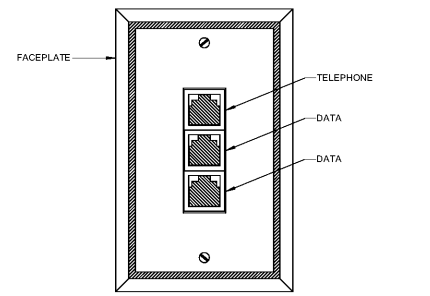


TYPICAL DATA OUTLET



TYPICAL TELEPHONE OUTLET



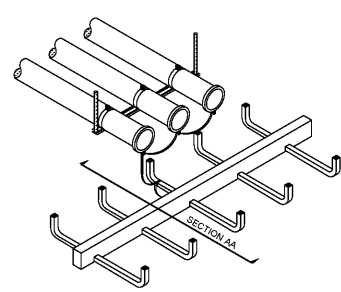
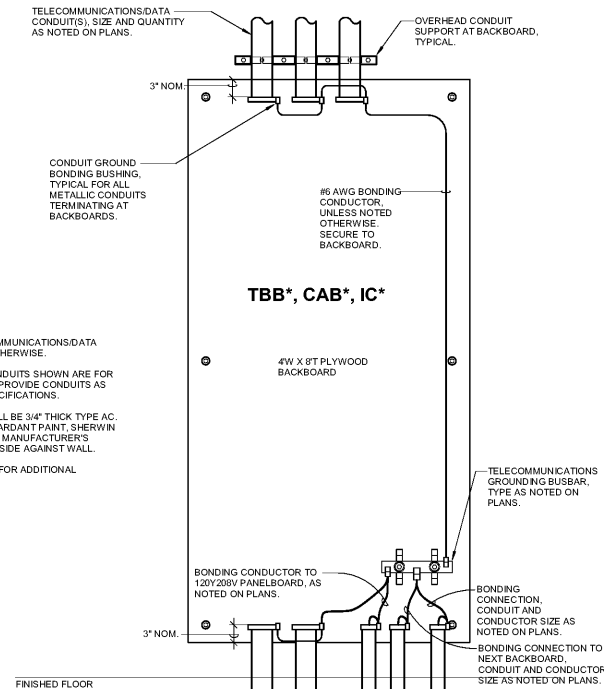
TYPICAL COMBINATION TELEPHONE/  
DATA OUTLET

D1  
E3.00 NTS  
COMMUNICATIONS OUTLET DETAILS

DETAIL NOTES:

1. DETAIL TYPICAL FOR ALL TELECOMMUNICATIONS DATA BACKBOARDS, UNLESS NOTED OTHERWISE.
2. TELECOMMUNICATIONS DATA CONDUITS SHOWN ARE FOR ILLUSTRATION PURPOSES ONLY. PROVIDE CONDUITS AS INDICATED ON PLANS WITHIN SPECIFICATIONS.
3. ALL PLYWOOD BACKBOARDS SHALL BE 3/4" THICK TYPE AG. PAINT ALL 6 SIDES WITH FIRE RETARDANT PAINT, SHERWIN WILLIAMS "FLAME-CONTROL", PER MANUFACTURER'S RECOMMENDATIONS. MOUNT "C" SIDE AGAINST WALL.
4. SEE PLANS AND SPECIFICATIONS FOR ADDITIONAL REQUIREMENTS.

D3  
E3.00 NTS  
BACKBOARD DETAIL



CONDUIT TERMINATION AT CABLE TRAY  
ISOMETRIC VIEW

DETAIL NOTES:

1. DETAIL TYPICAL FOR ALL TELECOMMUNICATIONS DATA CONDUITS FROM BACKBOARDS TERMINATING AT CABLE TRAY, UNLESS NOTED OTHERWISE.
  2. TELECOMMUNICATIONS DATA CONDUITS SHOWN ARE FOR ILLUSTRATION PURPOSES ONLY. PROVIDE CONDUITS AS INDICATED ON PLANS OR WITHIN SPECIFICATIONS.
- SEE PLANS AND SPECIFICATIONS FOR ADDITIONAL REQUIREMENTS.

D4  
E3.00 NTS  
TELECOMMUNICATIONS DATA CONDUIT(S) TERMINATING AT CABLE TRAY

TECHNOLOGY & COMMUNICATIONS SYMBOL LEGEND

SYMBOL	DESCRIPTION
▶	TELEPHONE OUTLET FOR WALL MOUNTED PHONE, MOUNTED 48" AFF. NOTE 2
▶	TELEPHONE OUTLET, MOUNTED 16" AFF. NOTE 2
▶	TELEPHONE OUTLET MOUNTED ABOVE COUNTER, MOUNT 3" ABOVE COUNTER BACKSPLASH OR 42" AFF WHERE NO COUNTERS ARE SHOWN. NOTE 2
▶	DATA OUTLET, " INDICATES NUMBER OF DROPS, MOUNTED 16" AFF. NOTE 1
▶	DATA OUTLET MOUNTED ABOVE COUNTER, " INDICATES NUMBER OF DROPS. MOUNT 3" ABOVE COUNTER BACKSPLASH OR 42" AFF WHERE NO COUNTERS ARE SHOWN. NOTE 1
▶	COMBINATION TELEPHONE DATA OUTLET, MOUNTED 16" AFF. NOTE 1
▶	COMBINATION TELEPHONE DATA OUTLET MOUNTED ABOVE COUNTER, MOUNTED 3" ABOVE COUNTER BACKSPLASH OR 42" AFF WHERE NO COUNTERS ARE SHOWN. NOTE 1
▶	DATA OUTLET FOR CONNECTION OF WALL MOUNTED MONITOR. ROUGH-IN 6'-0" AFF. NOTE 1
⊙	CEILING MOUNTED WIRELESS ACCESS POINT (WAP)
[R.B.]	ROOM JUNCTION BOX, PROVIDE 12" x 12" x 6" BOX MOUNTED ABOVE FINISHED CEILING.
CT	CABLE TRAY
I-□	SCHOOL INTERCOM CALL-IN BUTTON, MOUNT 48" AFF.
I-□	INTERCOM CALL-IN SWITCH WITH VOLUME CONTROL, MOUNT 48" AFF.
I-□	SCHOOL INTERCOM SPEAKER - WALL SURFACE MOUNT, 8'-0" AFF UNO
I-□	SCHOOL INTERCOM SYSTEM SPEAKER - WALL FLUSH MOUNT. SEE ARCHITECTURAL ELEVATIONS FOR MOUNTING HEIGHTS.
I-□	SCHOOL INTERCOM SYSTEM SPEAKER - CEILING MOUNT, FLUSH, NOTE 11.
I-□	SCHOOL INTERCOM SYSTEM ADMINISTRATION TELEPHONE, MOUNT 16" AFF, NOTE 2, 8.
I-□	CLASSROOM SOUNDFIELD SPEAKER. NOTE 4
AV ▶	TEACH AV STATION, MOUNTED 16" AFF. NOTE 5
I-[ITS]	INTERACTIVE TOUCH SCREEN OUTLET. NOTE 5.
I-[ITS]	INTERACTIVE PROJECTOR SYSTEM OUTLET. NOTE 5.
● IR	INFRARED CEILING MOUNTED SENSOR. NOTE 4.
WP	SUBSCRIPT INDICATED WEATHERPROOF DEVICE

- SPECIAL SYSTEMS SYMBOL NOTES:
1. PROVIDE 1-1/4" C. TO CABLE TRAY OR AS INDICATED.
  2. PROVIDE 3/4" C. TO CABLE TRAY.
  3. PROVIDE 1-1/4" C. AS INDICATED.
  4. THIS EQUIPMENT IS TO BE FURNISHED BY SCHOOL DISTRICT'S VENDOR SEPARATE FROM CONSTRUCTION CONTRACT. COORDINATE WITH VENDOR FOR LOCATION AND MOUNTING.
  5. PROVIDE RANDL 5' SQUARE x 2-7/8" DEEP BOX.

- SPECIAL SYSTEMS GENERAL NOTES:
- A. SEE DIVISION 27 SPECIFICATIONS FOR ADDITIONAL INFORMATION.
  - B. SEE CONDUIT RISER DETAIL FOR CONDUIT CONNECTIONS BETWEEN INTERCOM AND AV SYSTEMS EQUIPMENT.
  - C. ALL MOUNTING HEIGHTS LISTED ARE TO BOTTOM OF THE DEVICE UNLESS NOTED OTHERWISE.

**GMC**

1219 Wayne Street  
Columbia, SC 29201  
T 803.766.1235  
GMCNETWORK.COM

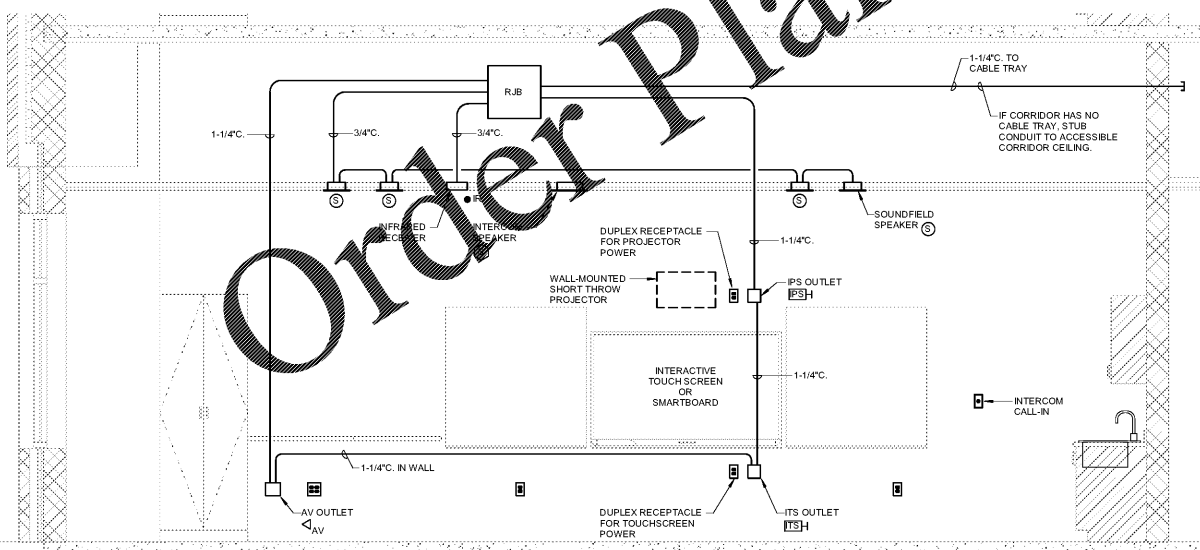


**Buford Goff & Associates, Inc.**  
Engineers & Planners  
1433 Boulevard Ave.  
Columbia, SC 29204  
Phone: 803.766.1235

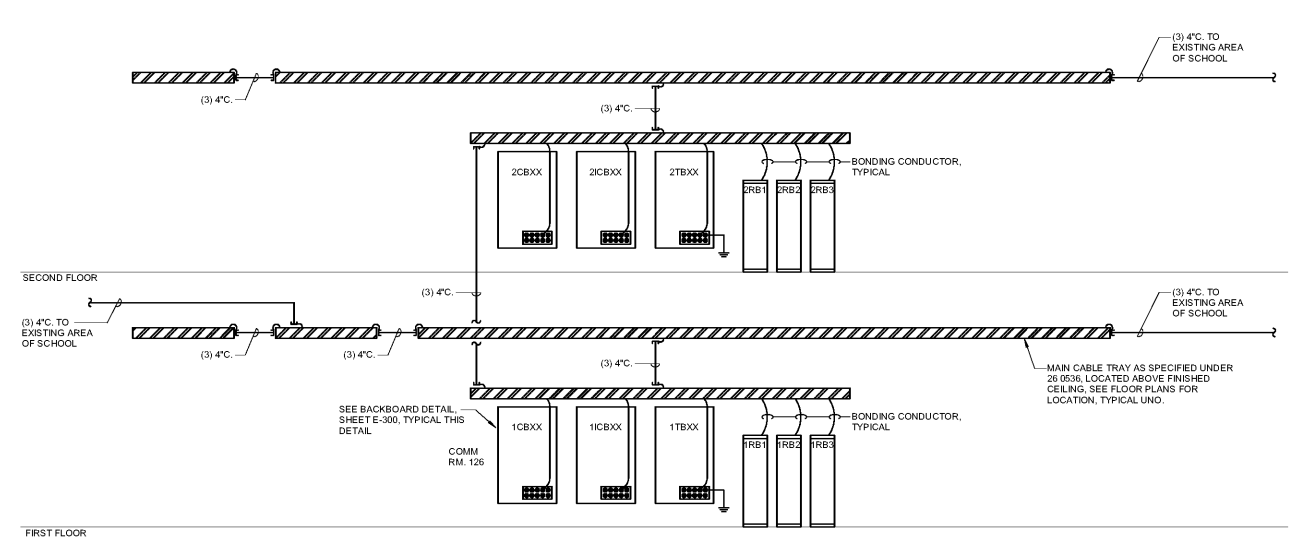
ISSUE	DATE	DESCRIPTION
BID DOCUMENTS	10/24/19	

TECHNOLOGY & COMMUNICATIONS DETAILS  
MILLBROOK ELEMENTARY SCHOOL - ADDITIONS AND RENOVATIONS  
255 E PINE LOG RD., AIKEN, SC 29803  
GMC # ACOL180004

**E3.00**



A1  
E3.00 NTS  
TYPICAL CLASSROOM ELEVATION AT TEACHING WALL - TECHNOLOGY & COMMUNICATIONS



A7  
E3.00 NTS  
PREMISES WIRING SYSTEM RISER DIAGRAM

10/17/2019 11:54:20 AM