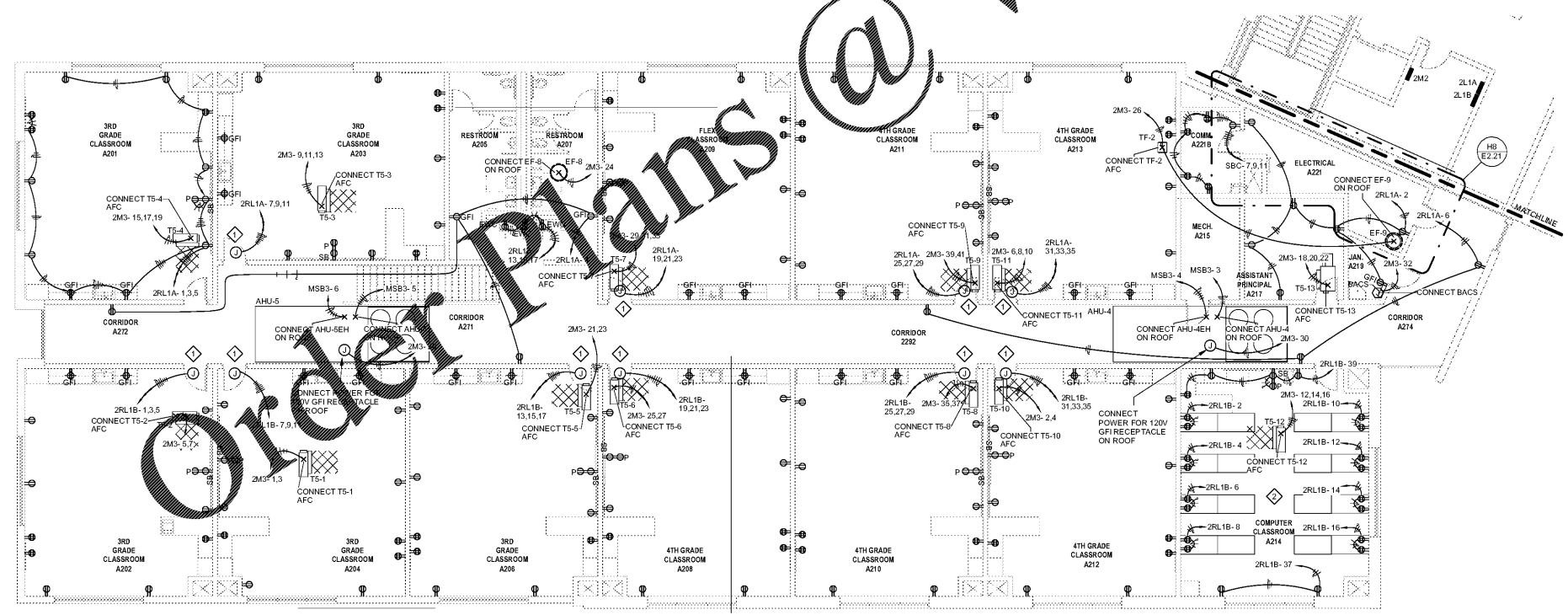
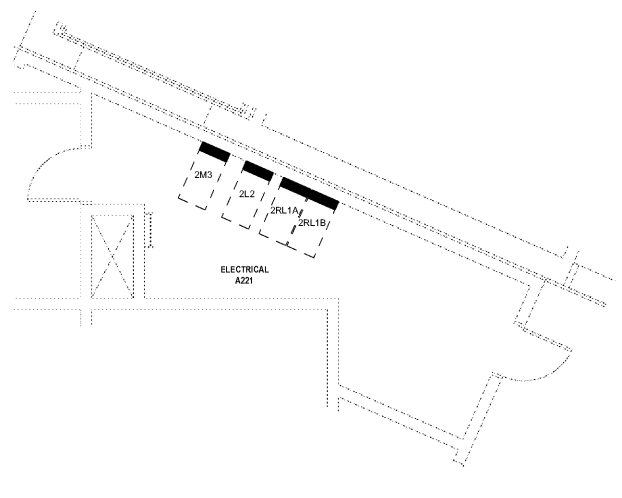


10/17/2019 11:54:12 AM

A1 SECOND LEVEL FLOOR PLAN - CLASSROOM ADDITION - ELECTRICAL
E2.21 1/8" = 1'-0"



E2.21 ENLARGED ELECTRICAL ROOM A221
1/4" = 1'-0"

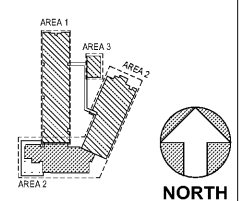


KEYNOTES

- ◇ PROVIDE CIRCUITING TO RECEPTACLES SIMILAR TO CLASSROOM 2200. ADJUST FOR ROOM ORIENTATION.
- ◇ FIELD VERIFY LOCATION OF RECEPTACLES WITH ARCHITECT.

Order Plans @ www.LDILine.com

KEY PLAN



MILLBROOK ELEMENTARY SCHOOL - ADDITIONS AND RENOVATIONS

SECOND LEVEL FLOOR PLAN - CLASSROOM ADDITION - ELECTRICAL

255 E PINE LOG RD., Aiken, SC 29803
GMC # ACOL180004

E2.21

GMC

1219 Wayne Street
Columbia, SC 29201
T 803.766.1235
GMCNETWORK.COM



Buford Goff & Associates, Inc.
Engineers & Planners
1433 Boulevard Ave.
Aiken, SC 29801
Phone 803.766.4532

ISSUE	DATE
BID DOCUMENTS	10.24.19

DRAWN BY: MTFH
CHECKED BY: BCM