

ELECTRIC WATER HEATER SCHEDULE																						
WATER HEATER #	LOCATION	DRAWING #	NOMINAL CAPACITY*	SIZE		INPUT		ELEMENTS		OUTLET TEMP	RECOVERY		PIPE SIZES (IN.)			EXP. TANK (Y/N)	MIXING VALVE (Y/N)	RECIRC. PUMP (Y/N)	ELECT. VOLT/PH	MANUFACTURER AND MODEL	REMARKS	
				HT.(IN)	W.(IN)	KW	MBH	NO.	STEPS		T	RISE	GPH	CW	HW							HWR
WH-1	JAN. ROOM 2122	PL1	50	47	3/4"	24"	6	-	3	-	140°	100'	25	1 1/4"	1 1/4"	3/4"	Y	Y	Y	480V/3#	BRADFORD WHITE MODEL M-I-50A-6-35F	①

ELECTRIC WATER HEATER SCHEDULE (ALTERNATE #1)																						
WATER HEATER #	LOCATION	DRAWING #	NOMINAL CAPACITY*	SIZE		INPUT		ELEMENTS		OUTLET TEMP	RECOVERY		PIPE SIZES (IN.)			EXP. TANK (Y/N)	MIXING VALVE (Y/N)	RECIRC. PUMP (Y/N)	ELECT. VOLT/PH	MANUFACTURER AND MODEL	REMARKS	
				HT.(IN)	W.(IN)	KW	MBH	NO.	STEPS		T	RISE	GPH	CW	HW							HWR
WH-1	JAN. ROOM 2122	PL1	80	60	1/4"	26"	6	-	3	-	140°	100'	25	1 1/4"	1 1/4"	3/4"	Y	Y	Y	208V/3#	BRADFORD WHITE MODEL M-I-80A-6-35F	①

*ACTUAL CAPACITY SHALL BE WITHIN 5% OF NOMINAL CAPACITY FOR CAPACITIES LARGER THAN 80 GALLONS. ① LOCATED ON CONC. PAD

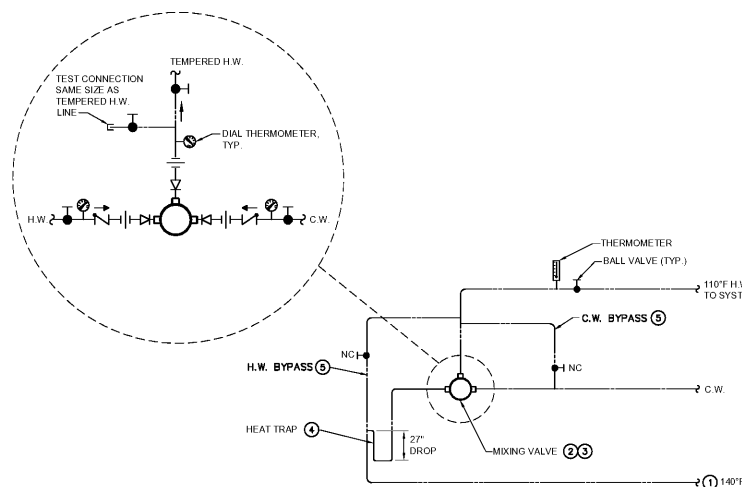
*ACTUAL CAPACITY SHALL BE WITHIN 5% OF NOMINAL CAPACITY FOR CAPACITIES LARGER THAN 80 GALLONS. ① LOCATED ON CONC. PAD

MIXING VALVE SCHEDULE								
MIXING VALVE #	WATER HEATER #	FLOW (GPM)		MAX. PD (P.S.I.)	SIZE		MANUFACTURER AND MODEL	REMARKS
		MIN.	MAX.		INLET	OUTLET		
MV-1	WH-1	1	25	10	3/4"	1"	LAWLER 801	①②

① WALL MOUNT ② ALL VALVES SHALL BE LEAD FREE

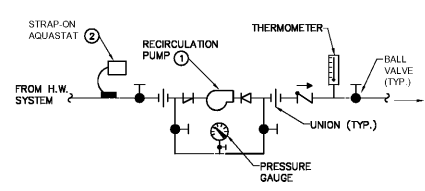
EXPANSION TANK SCHEDULE							
EXPANSION TANK #	WATER HEATER #	SYST. PRESSURE (P.S.I.)	TANK SIZE			MANUFACTURER AND MODEL	REMARKS
			GAL.	DIA.(IN)	L.(IN)		
		65	6.4	12	13-3/8	THERM-X-TROL-ST-12 C	①③

* EXPANSION TANK REQUIRED WHERE MULTIPLE HEATERS ARE PIPED TOGETHER UNLESS INDICATED OTHERWISE. ① IN-LINE ② VERTICAL ③ AMTROL MODEL ST-12V FOR 40-120 GAL. AND UP TO 80 PSI ④ ASME RATED ⑤ ALL MATERIAL SHALL BE LEAD FREE



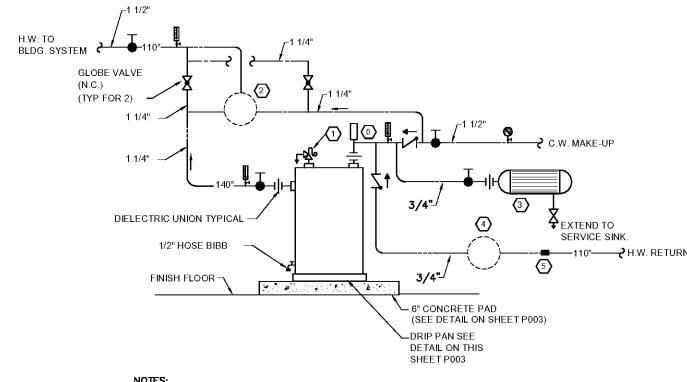
- NOTES:
- CONNECT AFTER ALL WATER HEATERS.
 - SCHEMATIC IS INTENDED TO SHOW GENERAL PIPE ROUTING, GAUGES, VALVES AND ACCESSORIES FOR A TYPICAL MIXING VALVE INSTALLATION AND MINIMUM STANDARDS (I.E. SHUT-OFF VALVES, THERMOMETER, ETC.). CONTRACTOR SHALL INSTALL IN ACCORDANCE WITH MANUFACTURER'S RECOMMENDATIONS, AND INCLUDE ACCESSORIES INDICATED IN THIS SCHEMATIC.
 - MIXING VALVE SHALL BE MOUNTED TO PERMIT ACCESS TO VALVE FOR ADJUSTMENTS.
 - PROVIDE HEAT TRAP OF SIZE AND LOCATION AS RECOMMENDED BY MANUFACTURER.
 - BYPASS ONE SIZE SMALLER THAN H.W. AND C.W. SIZE.

MIXING VALVE PIPING SCHEMATIC
NOT TO SCALE



- NOTES:
- SUPPORT PUMP INDEPENDENTLY FROM PIPING FROM WALL OR STRUCTURE.
 - COORDINATE LOCATION OF CONTROLLER WITH CONTROL CONTRACTOR.

DOMESTIC WATER RECIRCULATING PUMP DETAIL
NOT TO SCALE



- NOTES:
- T & P RELIEF VALVE, PIPE TO FLOOR DRAIN OR SERVICE SINK.
 - THERMOSTATIC MIXING VALVE: LOCATE 6"-0" A.F.F. (MIXING VALVE SHALL BE PIPED TO MANUFACTURER RECOMMENDATIONS AND FIELD ADJUSTED BY MANUFACTURER REPRESENTATIVE). SEE DETAIL ON THIS SHEET P003 FOR PIPING.
 - EXPANSION TANK: SEE EXPANSION TANK SCHEDULE ON SHEET P003.
 - RECIRC. PUMP SHALL BE BELL & GOSSET SERIES PL-36 PUMP, 5.0 GPM, 32 FT. HEAD, 1/6 HP., 3300 RPM ALL BRONZE CONSTRUCTION, SUPPORT REC. PUMP INDEPENDENTLY FROM PIPING BY ANGLE IRON WALL BRACKETS OR PIPE STAND. SEE DETAIL ON THIS SHEET P003 FOR PIPING.
 - STRAP ON AQUASTAT SHALL BE SET FOR 110° (WITH 5° F DIFFERENTIAL) RECIRCULATION FROM BUILDING.
 - VACUUM BREAKER

ELECTRIC WATER HEATER PIPING DETAIL
NOT TO SCALE
(WH-1)

Order Plans @ WWW.LDLINE.COM

GMC

1219 Wayne
Columbia, SC
T: GMCNETWORK.CO



Buford Goff & Associates, Inc.
Engineers & Planners
137 Elmwood Ave.
Columbia, SC 29209
Phone: (803) 741-6302

ISSUE	DATE
BID DOCUMENTS	10.24.19

DRAWN BY: SLM
CHECKED BY: MA

MILLBROOK ELEMENTARY
SCHOOL - ADDITIONS AND
RENOVATIONS
255 E PINE LOG RD,
AIKEN, SC 29803
GMC # ACOL18004

PLUMBING DETAILS
P0.3