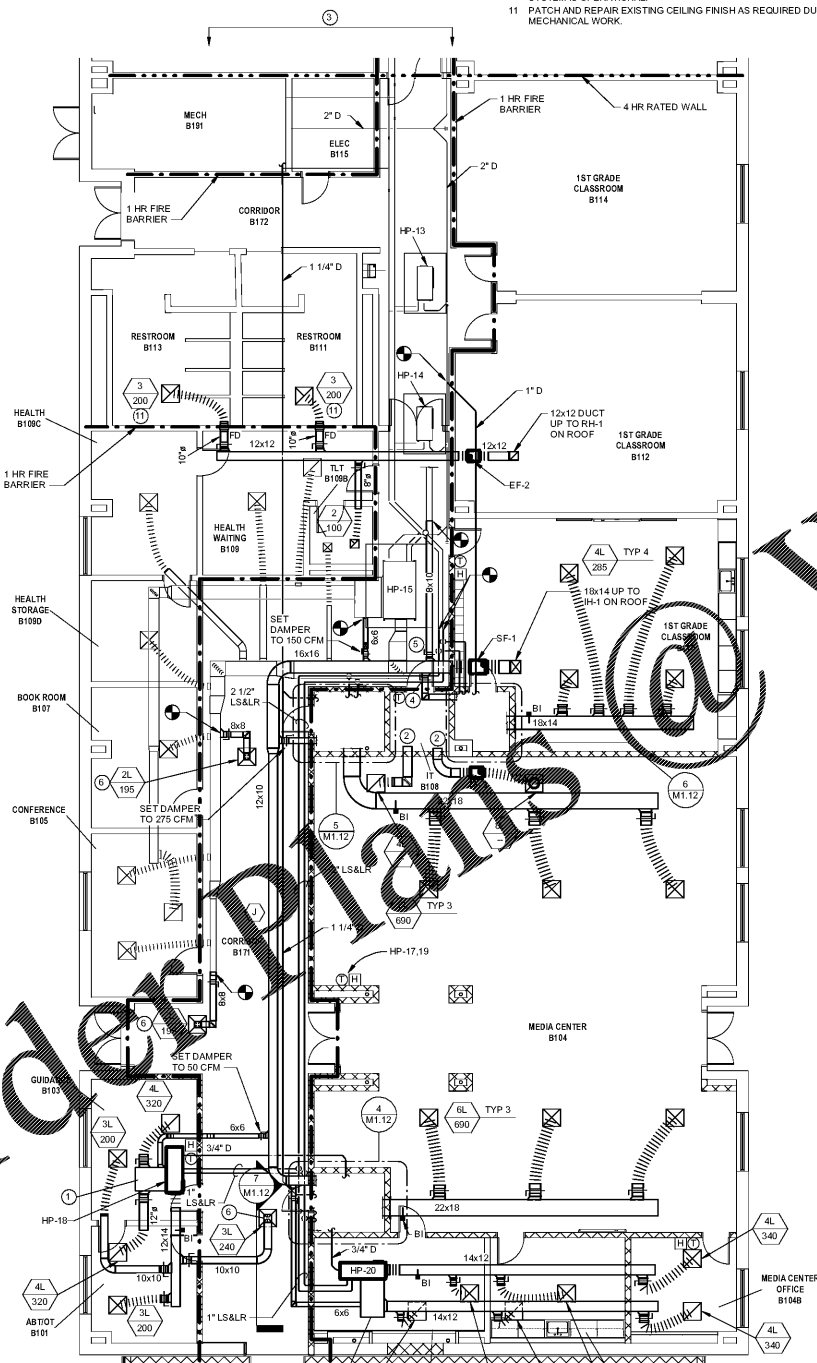
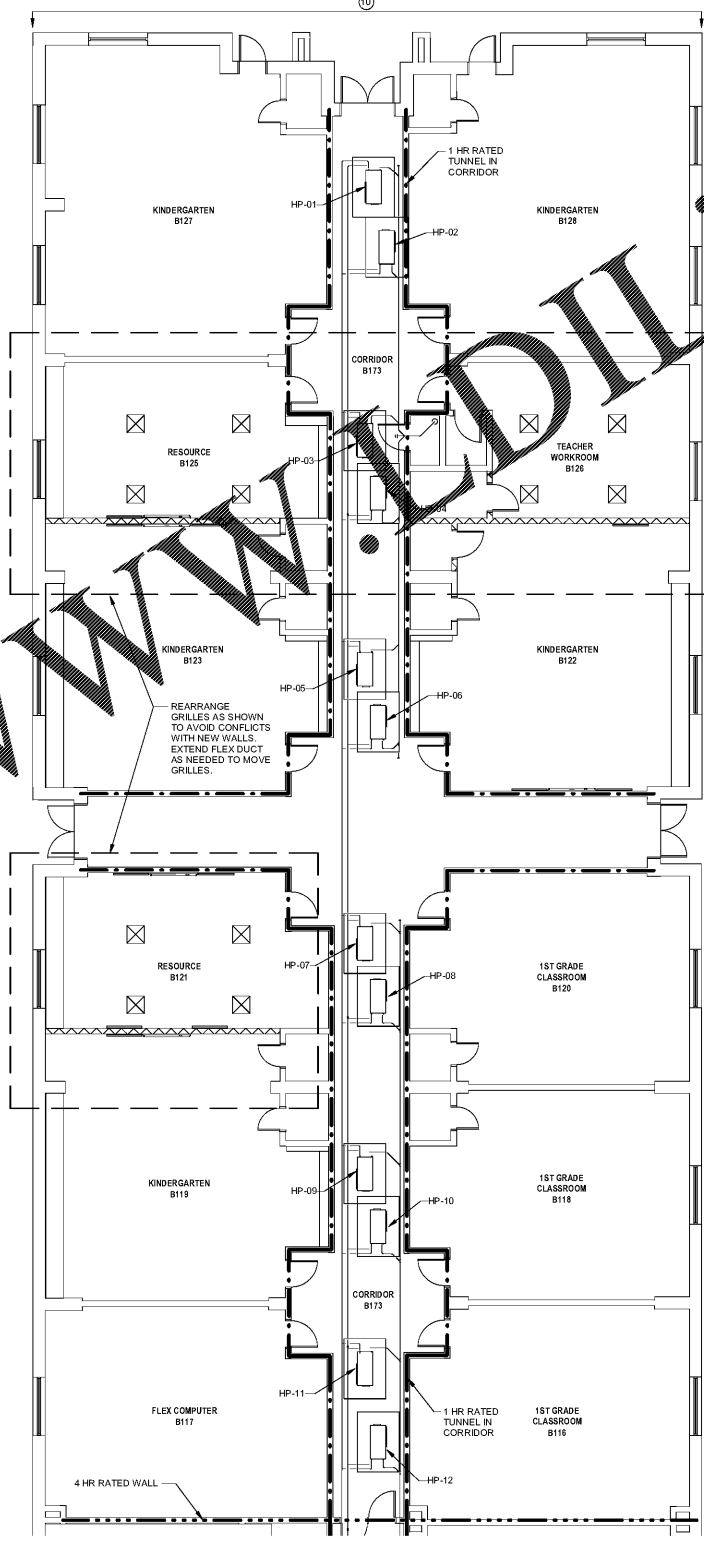


Order Plans @ WWW.DIline.com

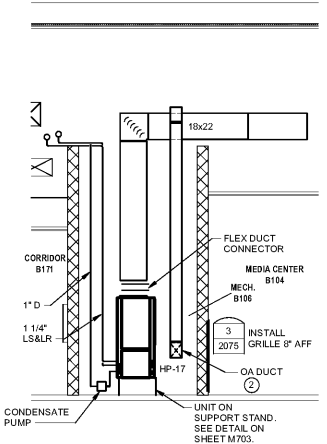
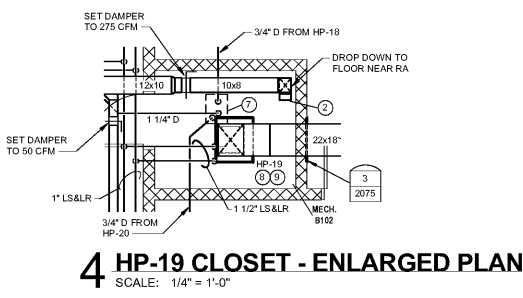
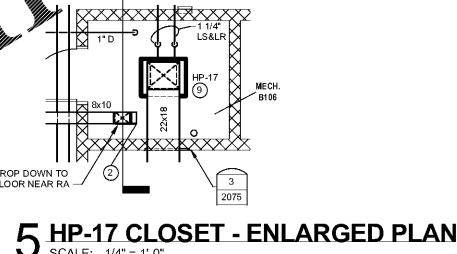
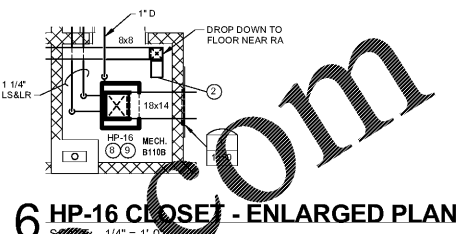
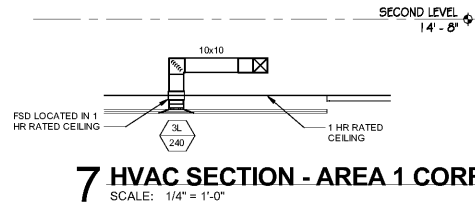
1 FIRST LEVEL - HVAC RENOVATION PLAN - AREA 1
SCALE: 1/8" = 1'-0"



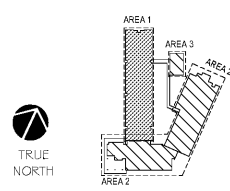
2 FIRST LEVEL - HVAC RENOVATION PLAN - AREA 1 (CONTINUED)
SCALE: 1/8" = 1'-0"



- NOTES**
- 1 PLENUM FULL SIZE OF UNIT CONNECTION. HEIGHT AS REQUIRED TO TIE IN DUCTS.
 - 2 CAP DUCT WITH WIRE GRILLE. SEE DETAIL ON M7.01.
 - 3 ALL NEW DUCTWORK AND PIPING IN CORRIDOR 1192 SHALL BE RUN ABOVE THE RATED CEILING EXCEPT WHERE NOTED.
 - 4 SET DAMPER TO 175 CFM.
 - 5 SET DAMPER TO 300 CFM.
 - 6 TURN DUCT DOWN WITH 90 DEG ELBOW AND HARD CONNECT TO GRILLE. PROVIDE COMBINATION FIRE/SMOKE DAMPER WHERE DUCT PENETRATES RATED CEILING. SEE SECTION THIS SHEET.
 - 7 TIE IN HP-18.20 DRAIN LINES TO HP-19 DRAIN LINE UPSTREAM OF CONDENSATE PUMP.
 - 8 PROVIDE MANUFACTURER'S RECOMMENDED CLEARANCE.
 - 9 INSTALL HP SIMILAR TO HP-17. SEE SECTION THIS SHEET.
 - 10 BLEED ALL AIR FROM THE WATER SOURCE HEAT PUMP SYSTEM AND REBALANCE WATER SOURCE HEAT PUMP (WATER FLOW) AFTER SYSTEM IS OPERATIONAL.
 - 11 PATCH AND REPAIR EXISTING CEILING FINISH AS REQUIRED DUE TO MECHANICAL WORK.



KEY PLAN



1219 Wayne
Columbia, SC
T
GMCNETWORK.CO



Burford Goff
& Associates, Inc.
Engineers & Planners
1433 Blountwood Ave.
Blount, SC 29909
Phone: 803.724.4322

ISSUE	DATE
BID DOCUMENTS	10.24.19

MILLBROOK ELEMENTARY
SCHOOL - ADDITIONS AND
RENOVATIONS
255 E PINE LOG RD, AIKEN, SC
29803
GMC # ACOL180004

FIRST LEVEL - HVAC
RENOVATION PLAN -
AREA 1

M1.12

DRAWN BY: JSS
CHECKED BY: DER