

TEMPORARY COOLING

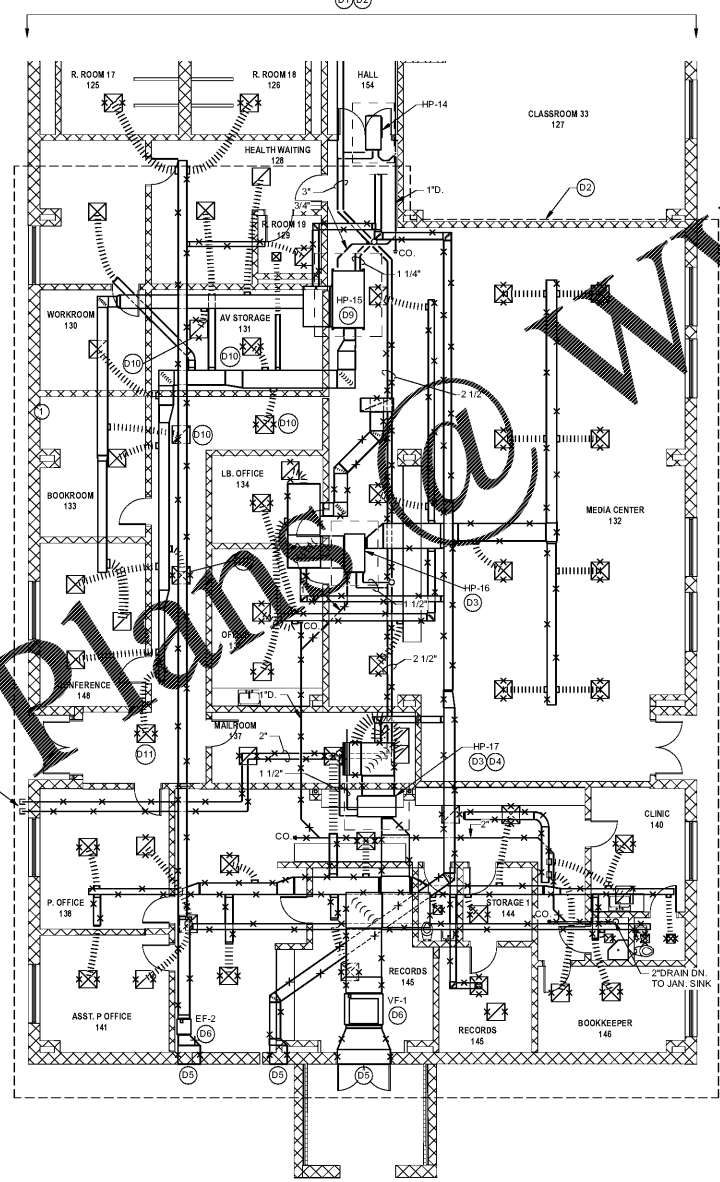
PROVIDE 25 TONS (THREE OR MORE UNITS) FOR TEMPORARY COOLING FOR THE EXISTING BUILDING. DUCT CAN RUN DOWN CORRIDOR OR THROUGH WINDOWS. SEAL OPENINGS WHERE DUCT ENTERS BUILDING. DISTRIBUTE AIR IN EXISTING WING. PROVIDE POWER AND CONTROLS TO RUN TEMPORARY COOLING.

TEST AND BALANCE NOTES

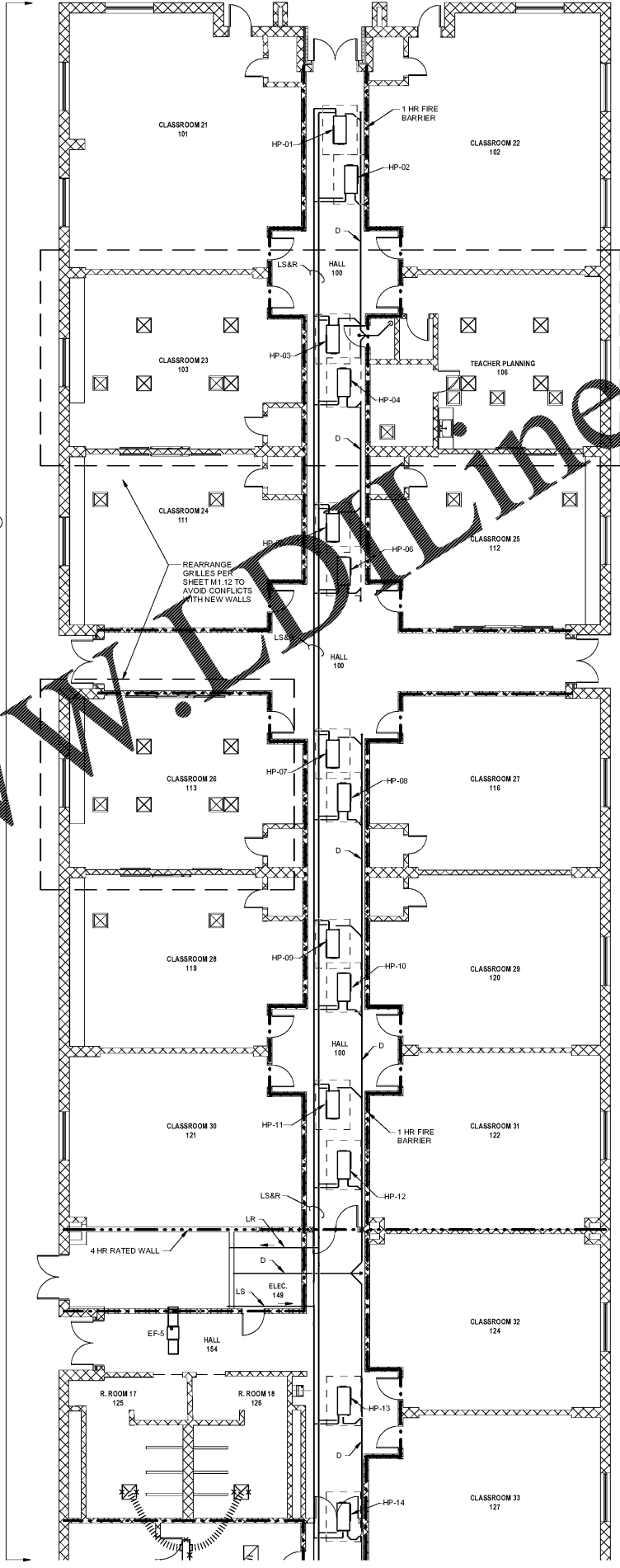
- 1. PROVIDE TEST AND BALANCE (TAB) REPORTS PRIOR TO DEMOLITION WORK BEING DONE.
- 2. PROVIDE TAB REPORTS ON EXISTING:
 - A. HP-01 TO HP-17: WATER FLOW
 - B. HP-15: UNIT AIRFLOW AND GRILLE AIRFLOW
 - C. HP-14-17: OUTSIDE AIR
- 3. REBALANCE WATER FLOW AND AIRFLOW AS DIRECTED BY ENGINEER.

DEMOLITION NOTES

- (D1) SEE TEST AND BALANCE NOTES FOR REQUIREMENTS.
- (D2) COMPLETELY REMOVE ALL HVAC EQUIPMENT, FANS, DUCTS, GRILLES, CONTROLS, SUPPORTS, AND ACCESSORIES IN THIS AREA, EXCEPT AS NOTED OTHERWISE.
- (D3) REMOVE WATER SOURCE HEAT PUMP. REMOVE ASSOCIATED PIPING, CONTROLS, DUCTWORK, FLEX DUCT AND DIFFUSERS AS INDICATED.
- (D4) REMOVE SUPPORT PLATFORM FOR WATER SOURCE HEAT PUMP.
- (D5) REMOVE LOUVER, PATCH AND REPAIR WALL OPENING PER ARCHITECTURAL DRAWINGS.
- (D6) REMOVE FAN AND ASSOCIATED CONTROLS AND DUCTWORK AS INDICATED.
- (D7) NOT USED.
- (D8) REMOVE CAPPED PIPES. PATCH AND REPAIR WALL OPENINGS.
- (D9) HP-15 AND ALL ASSOCIATED DUCTWORK, GRILLES, PIPING, CONTROLS, SUPPORTS, AND ACCESSORIES TO REMAIN UNDO. SEAL ALL DUCT OPENINGS AND WASH UNIT DURING CONSTRUCTION.
- (D10) REMOVE GRILLE, ASSOCIATED FLEX DUCT, AND ACCESSORIES BACK TO MAIN DUCT. PATCH AND SEAL CONNECTION TO MAIN DUCT.
- (D11) REMOVE GRILLE, ASSOCIATED FLEX DUCT, AND ACCESSORIES BACK TO MAIN DUCT. DEMO MAIN DUCT TO BEFORE THE TAP FOR THIS GRILLE. COVER AND PREPARE MAIN DUCT FOR CONNECTION TO NEW DUCT.

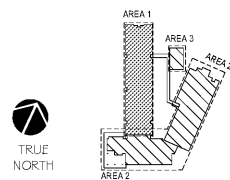


1 FIRST LEVEL - HVAC DEMOLITION PLAN - AREA 1
SCALE: 1/8" = 1'-0"



2 FIRST LEVEL - HVAC DEMOLITION PLAN - AREA 1 (CONTINUED)
SCALE: 1/8" = 1'-0"

KEY PLAN



Order Plans @ www.millbrooke.com



1219 Wayne
Columbia, SC
T
GMCNETWORK.CO



Burford Goff
& Associates, Inc.
Engineers & Planners
1433 Blount Ave.
Columbia, SC 29204
Phone: 803.741.4522

ISSUE	DATE
BID DOCUMENTS	10.24.19

MILLBROOK ELEMENTARY
SCHOOL - ADDITIONS AND
RENOVATIONS
255 E PINE LOG RD, AIKEN, SC
29803
GMC # ACOL180004

FIRST LEVEL - HVAC
DEMOLITION PLAN -
AREA 1
MD1.12

DRAWN BY: JSS
CHECKED BY: DER