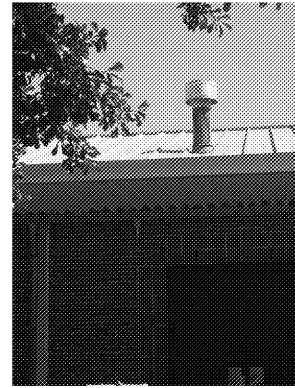


10/22/2019 3:54:13 PM



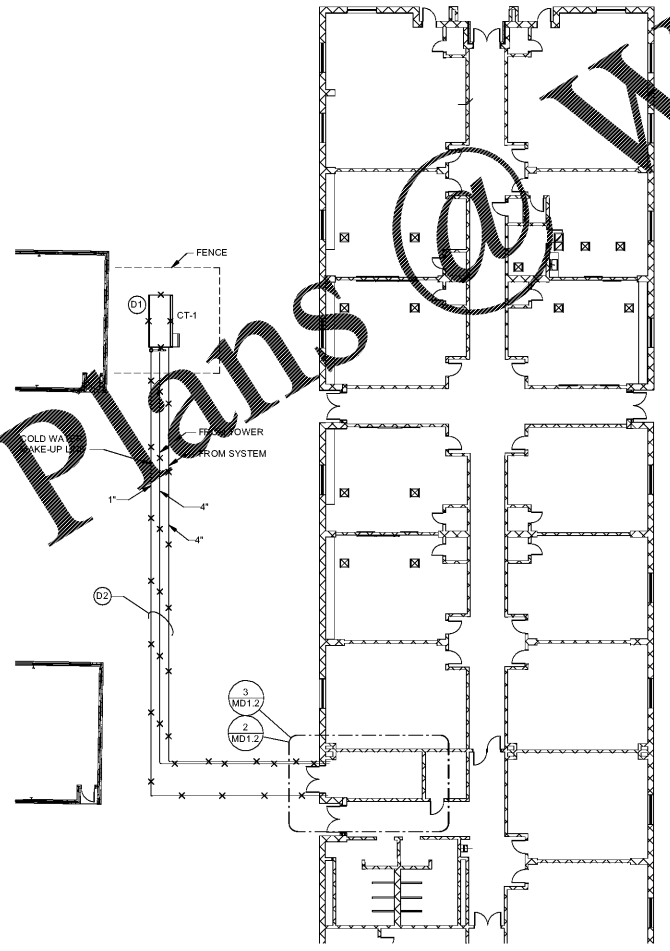
BOILER FLUE AT ROOF

TEST AND BALANCE NOTES

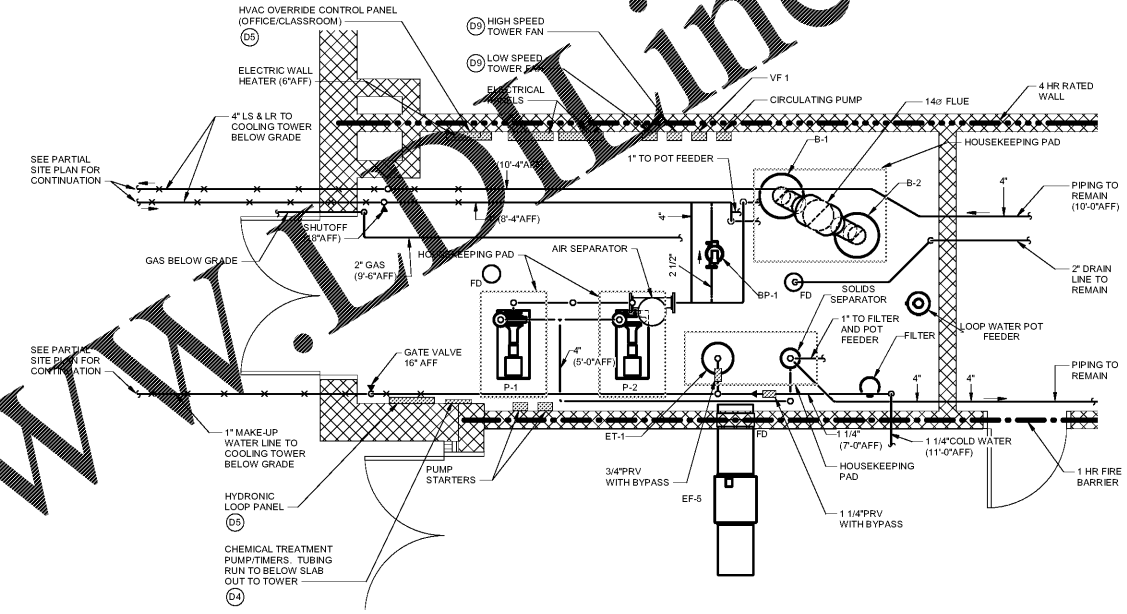
- 1. PROVIDE TEST AND BALANCE (T&B) REPORT PRIOR TO DEMOLITION WORK BEING DONE.
- 2. PROVIDE TAB REPORTS ON EXISTING P-1 AND P-2.

DEMOLITION NOTES

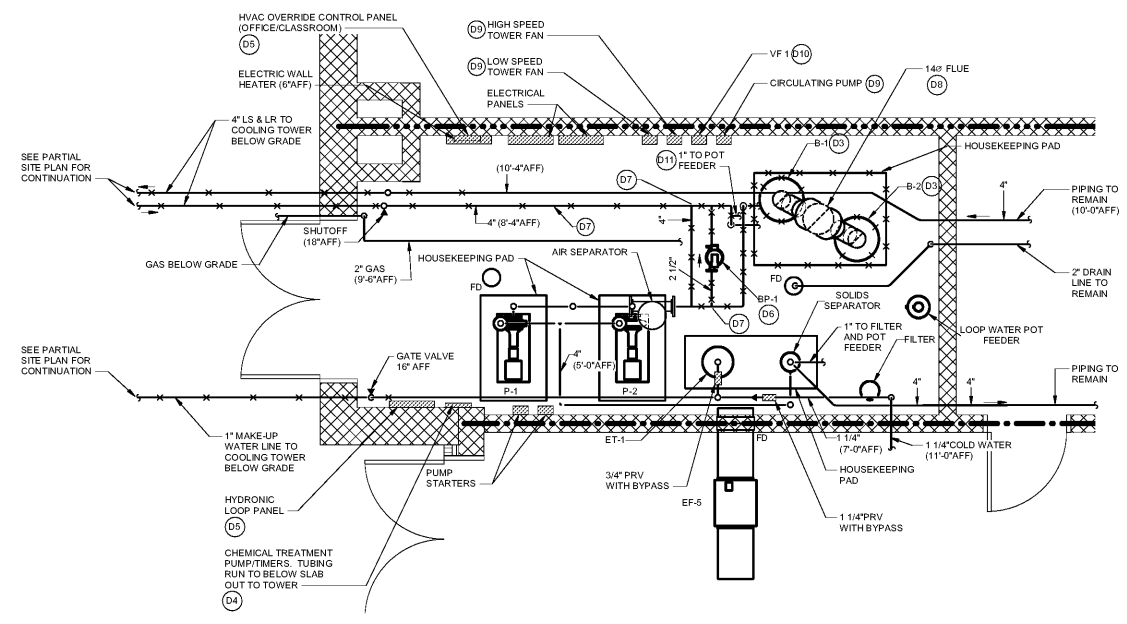
- (D1) REMOVE COOLING TOWER, TOWER CONCRETE PAD, SUPPORTS, CONTROLS AND ACCESSORIES.
- (D2) REMOVE UNDERGROUND PIPING FROM COOLING TOWER TO BOILER ROOM. REMOVE CHEMICAL TREATMENT PIPING AND CONTROLS (NOT SHOWN).
- (D3) REMOVE BOILER, CONCRETE HOUSEKEEPING PAD, CONTROLS AND ACCESSORIES.
- (D4) REMOVE CHEMICAL TREATMENT SYSTEM INCLUDING PUMPS, CONTROLS, PIPING AND ACCESSORIES.
- (D5) REMOVE EXISTING CONTROLS NO LONGER REQUIRED WHEN SYSTEM IS UPGRADED. UPGRADE EXISTING CONTROLS AS REQUIRED TO SUPPORT THE NEW EQUIPMENT.
- (D6) REMOVE BOILER PUMP, CONTROLS, SUPPORTS AND ACCESSORIES.
- (D7) REMOVE PIPING, SUPPORTS AND ACCESSORIES.
- (D8) REMOVE BOILER FLUE.
- (D9) REMOVE STARTERS.
- (D10) STARTER TO BE RELOCATED. SEE ELECTRICAL DRAWINGS. EXTEND CONTROLS.
- (D11) REMOVE PIPING TO EXTENT REQUIRED.



1 PARTIAL SITE DEMOLITION PLAN - HVAC SCALE: 1/16" = 1'-0"



2 BID) - HVAC SCALE: 3/8" = 1'-0"



3 (ALTERNATE No. 2) - HVAC SCALE: 3/8" = 1'-0"

Order Plans @ WWW.DIYline.com



1219 Wayne Columbia, SC GMCNETWORK.CO



Buford Goff & Associates, Inc. Engineers & Planners

ISSUE	DATE
BID DOCUMENTS	10.24.19

MILLBROOK ELEMENTARY SCHOOL - ADDITIONS AND RENOVATIONS 255 E PINE LOG RD, AIKEN, SC 29803 GMC # ACOL180004

PARTIAL SITE PLAN AND BOILER ROOM DEMOLITION - HVAC

MD1.2

