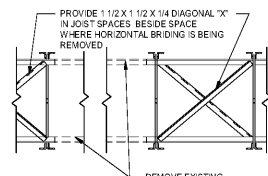


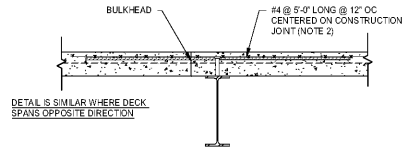
1 ROOF DECK ATTACHMENT DETAIL
S4.01 3/4" = 1'-0"

- NOTES:
- PROVIDE #10 TEK SCREWS @ 12" OC IN SDELAPE.
 - PROVIDE #12 SCREWS @ 6" OC AROUND ENTIRE PERIMETER.
 - AT ROOF MEMBERS WHICH ARE TOO THICK FOR SCREWS, 5/8" DIAMETER PIGTAIL WELDS SHALL BE SUBSTITUTED FOR SCREWS.



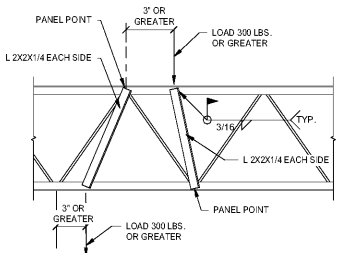
2 TYPICAL JOIST BRIDGING REMOVAL DETAIL
S4.01 3/4" = 1'-0"

- NOTES:
- THIS DETAIL IS TYPICAL AT ALL MECHANICAL DUCTS WHERE BRIDGING IS BEING REMOVED.
 - JOIST BRIDGING SHALL NOT BE REMOVED IN ANY TWO ADJACENT JOIST SPACES.
 - CONTRACTOR SHALL COORDINATE LOCATIONS WITH MECHANICAL DRAWINGS.



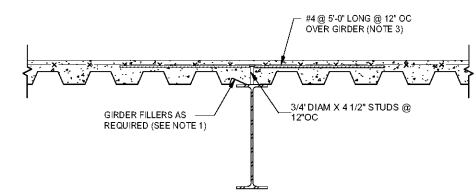
3 TYPICAL COMPOSITE SLAB CONSTRUCTION JOINT
S4.01 3/4" = 1'-0"

- NOTES:
- CONSTRUCTION JOINTS SHALL PREFERABLY BE LOCATED ALONG A COLUMN LINE.
 - STAGGER ALTERNATE BARS SO THAT ENDS OF ALTERNATE BARS ARE OFFSET 12".
 - CONTRACTOR SHALL SUBMIT THEIR PROPOSED CONSTRUCTION JOINT LOCATIONS FOR REVIEW BEFORE INSTALLATION.



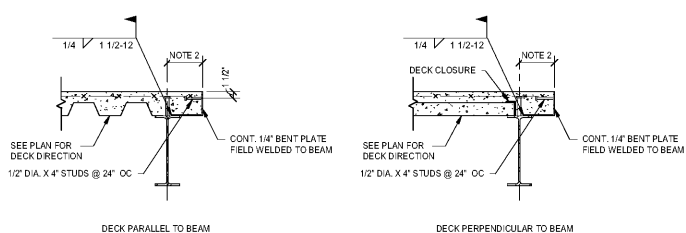
4 TYPICAL CONCENTRATED LOADS ON JOISTS
S4.01 3/4" = 1'-0"

- NOTES:
- WHEN LOADS OCCUR AT A DISTANCE GREATER THAN 3" FROM A PANEL POINT, A STRUT ANGLE MUST BE FURNISHED AND INSTALLED IN THE FIELD TO CARRY THE LOAD TO AN OPPOSITE PANEL POINT.



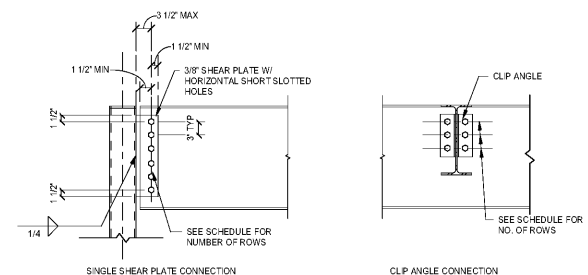
5 TYPICAL DETAIL AT GIRDERS
S4.01 3/4" = 1'-0"

- NOTES:
- DECK SUPPLIER SHALL PROVIDE GIRDER FILLERS AS REQUIRED AND SHALL LAY OUT DECK SO THAT SOLID CONCRETE OCCURS OVER ALL FLANGES SHOWN ABOVE.
 - #4 BARS MUST BE SUPPORTED ON CHAIRS OR BOLTS TO BE A MINIMUM OF 12".
 - STAGGER ALTERNATE BARS SO THAT ENDS OF ALTERNATE BARS ARE OFFSET 12".



6 TYPICAL DETAIL AT OPENINGS AND SLAB EDGES
S4.01 3/4" = 1'-0"

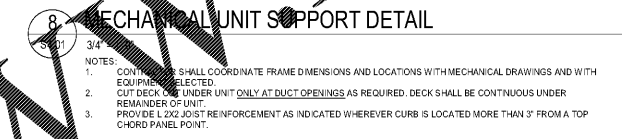
- NOTES:
- THIS SECTION IS TYPICAL AT SLAB EDGES AND OPENINGS WHERE NO OTHER SECTION IS SHOWN ON THE PLANS.
 - SEE THE FRAMING PLANS FOR DIMENSIONS AND SLAB EDGES.



7 TYPICAL BEAM CONNECTIONS
S4.01 3/4" = 1'-0"

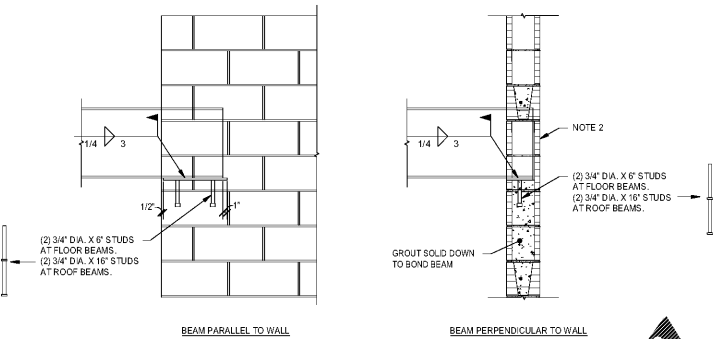
- NOTES:
- USE THESE CONNECTIONS WHERE NO OTHER CONNECTION IS SHOWN ON PLANS OR DETAILS.
 - USE CLIP ANGLE CONNECTIONS WHENEVER POSSIBLE. WHERE NOT POSSIBLE, USE SINGLE PLATE SHEAR CONNECTIONS.

BEAM SIZE	NO. ROWS 3/4" DIAMETER A325 ROWS	
	SINGLE PLATE CONN.	CLIP ANGLE CONN.
W8, W10	2	2
W12, W14	3	3
W16	4	4
W18	5	4
W21	6	5
W24	7	6



8 MECHANICAL UNIT SUPPORT DETAIL
S4.01 3/4" = 1'-0"

- NOTES:
- CONTRACTOR SHALL COORDINATE FRAME DIMENSIONS AND LOCATIONS WITH MECHANICAL DRAWINGS AND WITH EQUIPMENT SELECTED.
 - CUT DECK UNDER UNIT ONLY AT DUCT OPENINGS AS REQUIRED. DECK SHALL BE CONTINUOUS UNDER REMAINDER OF UNIT.
 - PROVIDE L 2X2 JOIST REINFORCEMENT AS INDICATED WHEREVER CURB IS LOCATED MORE THAN 3" FROM A TOP CHORD PANEL POINT.



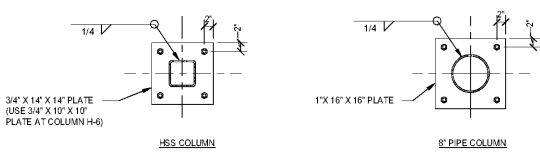
10 TYPICAL BEARING PLATE DETAIL
S4.01 3/4" = 1'-0"

- NOTES:
- LONG DIMENSION OF BEARING PLATE IS PERPENDICULAR TO BEAM EXCEPT WHERE NOTE 1 IS INDICATED. LONG DIMENSION IS PARALLEL TO BEAM.
 - DO NOT LET BEARING PLATE OR EXPOSED END OF BEAM SHOW AT EXPOSED SIDES OF WALLS.
 - BEARING PLATES FOR FLOOR BEAMS HAVE (2) 3/4" DIA. X 6" HEADED STUDS. BEARING PLATES FOR ROOF BEAMS HAVE (2) 3/4" DIA. X 10" HEADED STUDS MADE UP OF STACKED 6" LONG STUDS.
 - PROVIDE NON-SHRINK GROUT UNDER BEARING PLATE. GROUT MUST SET PLATE AT PROPER ELEVATION.
 - INFILL BEAM POCKET WITH CONCRETE OR SOLID CONCRETE BRICKS. INFILL AT WALLS WHICH ARE EXPOSED TO INFILL. MATCH CMU MASONRY MATCH REMAINDER OF WALL.

NO.	PLATE	REMARKS
B1	3/4" X 7" X 11"	
B2	3/4" X 7" X 11"	
B3	1" X 7" X 12"	
B4	3/4" X 7 1/2" X 10"	
B5	1 1/2" X 7 1/2" X 13"	
B6	1/2" X 6" X 10"	

- BEARING PLATE SCHEDULE NOTES:
- WHEN TWO IN-LINE BEAMS BEAR ON THE SAME BEARING PLATE, EXTEND THE DEEPER BEAM 1/2" AND PROVIDE A CLIP ANGLE CONNECTION TO THE SMALLER BEAM. SIMILAR AT TWO EQUAL DEPTH BEAMS.
 - AT FLOOR BEAMS, PROVIDE (2) 3/4" DIA. X 6" STUDS ON BOTTOM OF PLATE AND AT ROOF BEAMS, PROVIDE (2) 3/4" DIA. X 10" STUDS. SEE DETAIL 10B4.01.

FLOOR	Column Locations	Column
ROOF		
SECOND FLOOR		
FIRST FLOOR		

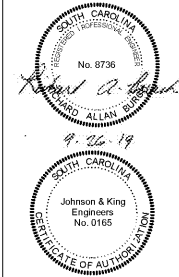


11 COLUMN BASE PLATE DETAILS
S4.01 3/4" = 1'-0"

- NOTES:
- ALL ANCHOR BOLTS ARE ASTM F1554, GRADE 36, 3/4" DIAMETER X 14" LONG. ALL ANCHOR BOLTS SHALL HAVE LEVELING NUTS.
 - SEE 13B2.01 FOR COLUMN BASE DETAIL. ALL BASE PLATES SHALL BE INSTALLED ON 2" GROUT.



1219 Wayne Street
Columbia, SC 29201
T 803.796.1235
GMCNETWORK.COM



ISSUE	DATE
BID DOCUMENTS	10.24.19

MILLBROOK ELEMENTARY
SCHOOL - ADDITIONS AND
RENOVATIONS
255 E PINE LOG RD, AIKEN, SC 29803
GMC # ACOL 180004

TYPICAL
STRUCTURAL
DETAILS
S4.01

