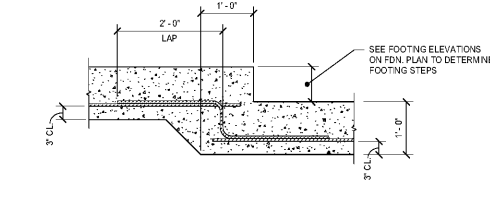


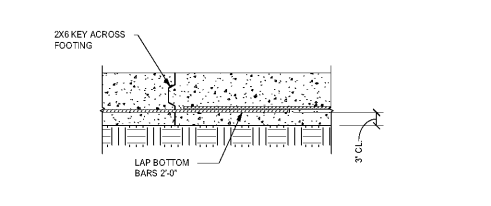
1 SLAB JOINT DETAILS
S2.01 3/4" = 1'-0"

NOTES:
1. SAW JOINTS ARE NOTED 'SJ' ON FOUNDATION PLAN. CONSTRUCTION JOINTS MAY BE SUBSTITUTED FOR SAW JOINTS AT CONTRACTOR'S OPTION.
2. PROVIDE LEVELING NUTS ON ALL ANCHOR BOLTS.



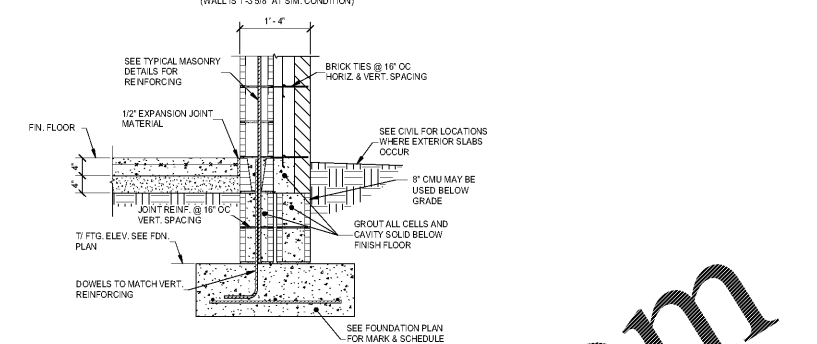
2 STEP FOOTING DETAIL
S2.01 3/4" = 1'-0"

NOTES:
1. SEE FOUNDATION PLAN FOR LOCATIONS OF FOOTING STEPS. IN CASES WHERE UTILITIES WOULD BE IN THE FOOTING, OR BELOW THE FOOTING WITH LESS THAN 9" OF EARTH BETWEEN THE BOTTOM OF FOOTING AND TOP OF UTILITY, PROVIDE ADDITIONAL STEPS AS REQUIRED TO LET UTILITIES PASS OVER TOPS OF FOOTINGS.

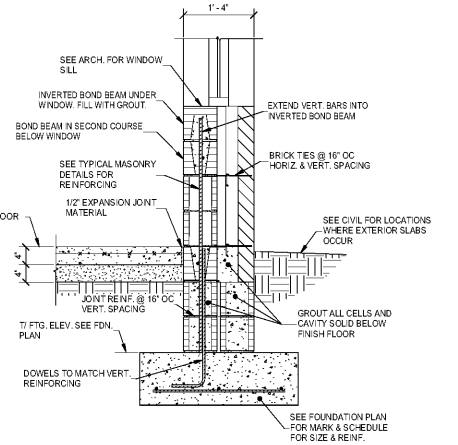


3 WALL FOOTING CONSTRUCTION JOINT DETAIL
S2.01 3/4" = 1'-0"

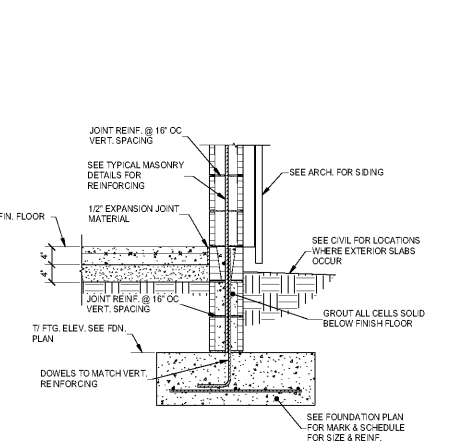
NOTES:
1. THIS DETAIL SHALL BE USED AT ALL LOCATIONS IN WALL FOOTINGS WHERE CONCRETE POURS ARE STOPPED.



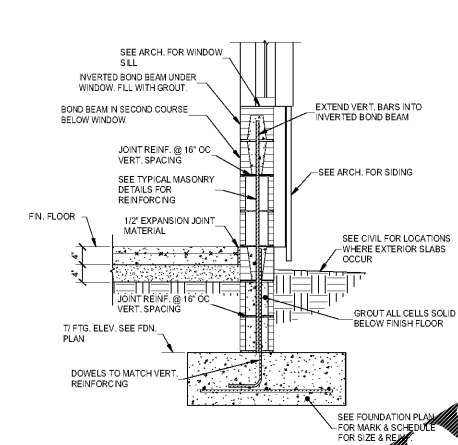
4 SECTION
S2.01 3/4" = 1'-0"



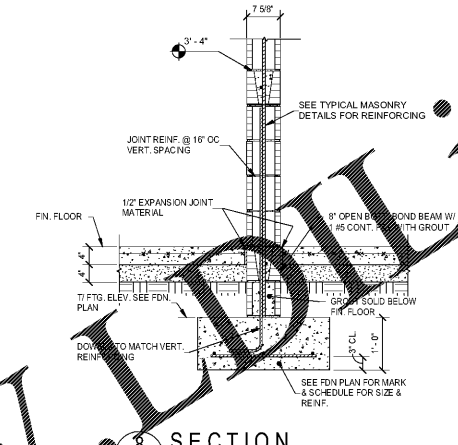
5 SECTION
S2.01 3/4" = 1'-0"



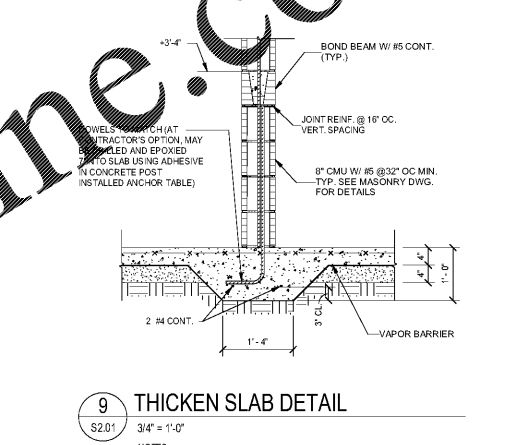
6 SECTION
S2.01 3/4" = 1'-0"



7 SECTION
S2.01 3/4" = 1'-0"

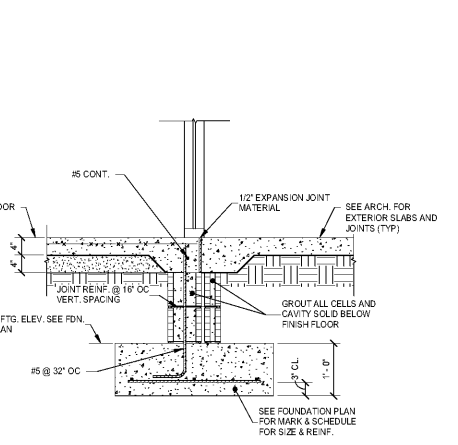


8 SECTION
S2.01 3/4" = 1'-0"

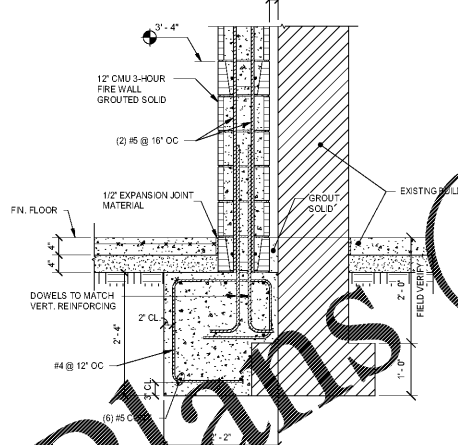


9 THICKEN SLAB DETAIL
S2.01 3/4" = 1'-0"

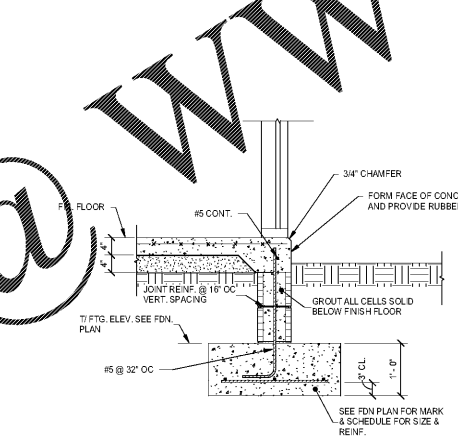
NOTES:
1. THICKEN SLABS ARE NOTED 'TS' ON FOUNDATION PLANS. WHERE MULTIPLE WALLS ARE ON ONE THICKENED SLAB, EXTEND THICKENED SLAB 4" MINIMUM BEYOND EACH WALL. PROVIDE ONE CONTINUOUS #4 BAR IN THICKENED SLAB FOR EACH 9" OF WIDTH.



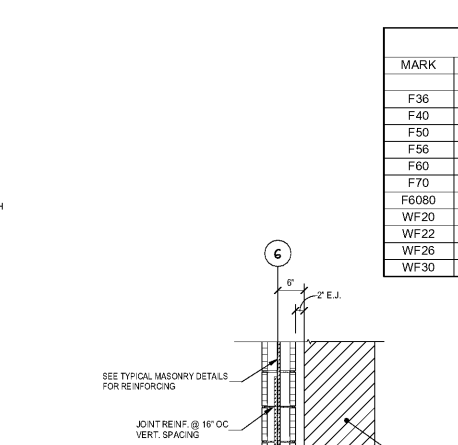
10 SECTION
S2.01 3/4" = 1'-0"



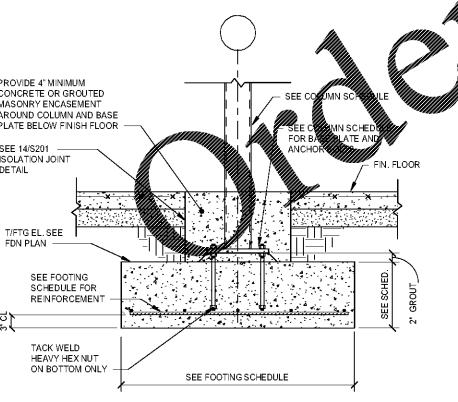
11 SECTION
S2.01 3/4" = 1'-0"



12 SECTION
S2.01 3/4" = 1'-0"

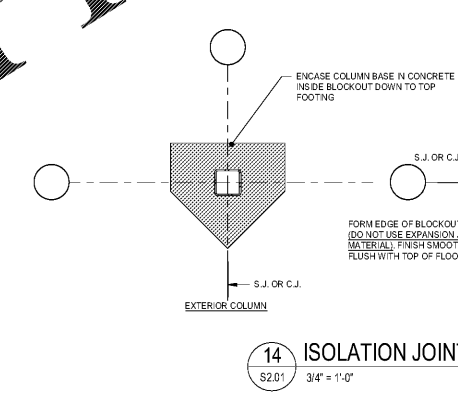


15 SECTION
S2.01 3/4" = 1'-0"



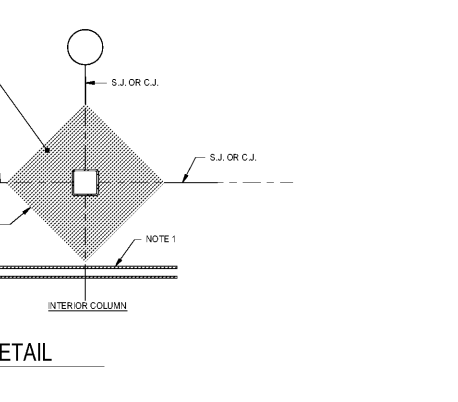
13 TYPICAL COLUMN BASE AND FOOTING DETAIL
S2.01 3/4" = 1'-0"

NOTES:
1. PROVIDE LEVELING NUTS ON ALL ANCHOR BOLTS.



14 ISOLATION JOINT DETAIL
S2.01 3/4" = 1'-0"

NOTES:
1. PROVIDE (2) #4 X 4'-0" LONG IN SLAB AT CORNERS OF ISOLATION JOINTS ONLY AT LOCATIONS WHERE NO S.J. OR C.J. OCCURS.



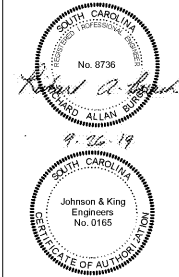
14 ISOLATION JOINT DETAIL
S2.01 3/4" = 1'-0"

NOTES:
1. PROVIDE (2) #4 X 4'-0" LONG IN SLAB AT CORNERS OF ISOLATION JOINTS ONLY AT LOCATIONS WHERE NO S.J. OR C.J. OCCURS.

FOOTING SCHEDULE			
MARK	SIZE	THICKNESS	REINFORCING EACH WAY
F36	3'-6" X 3'-6"	12"	4 #5
F40	4'-0" X 4'-0"	12"	4 #5
F50	5'-0" X 5'-0"	12"	5 #5
F56	5'-6" X 5'-6"	13"	6 #5
F60	6'-0" X 6'-0"	14"	7 #5
F70	7'-0" X 7'-0"	17"	6 #6
F680	6'-0" X 8'-0"	14"	7#5 LONG WAY, 9#5 SHORT WAY
WF20	2'-0" CONT.	12"	3 #5 CONT., #4 @ 32" OC TRANSVERSE
WF22	2'-2" CONT.	24"	SEE 11/S2.01 OR 15/S2.01
WF26	2'-6" CONT.	12"	3 #5 CONT., #4 @ 32" OC TRANSVERSE
WF30	3'-0" CONT.	12"	3 #5 CONT., #4 @ 32" OC TRANSVERSE

GMC

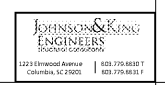
1219 Wayne Street
Columbia, SC 29201
T 803.766.1235
GMCNETWORK.COM



ISSUE	DATE
BID DOCUMENTS	10.24.19

MILLBROOK ELEMENTARY SCHOOL - ADDITIONS AND RENOVATIONS
255 E PINE LOG RD, AIKEN, SC 29803
GMC # ACOL 180004

STRUCTURAL DETAILS
S2.01



1223 E. Imperial Avenue
Columbia, SC 29205
803.775.8827
803.775.8824