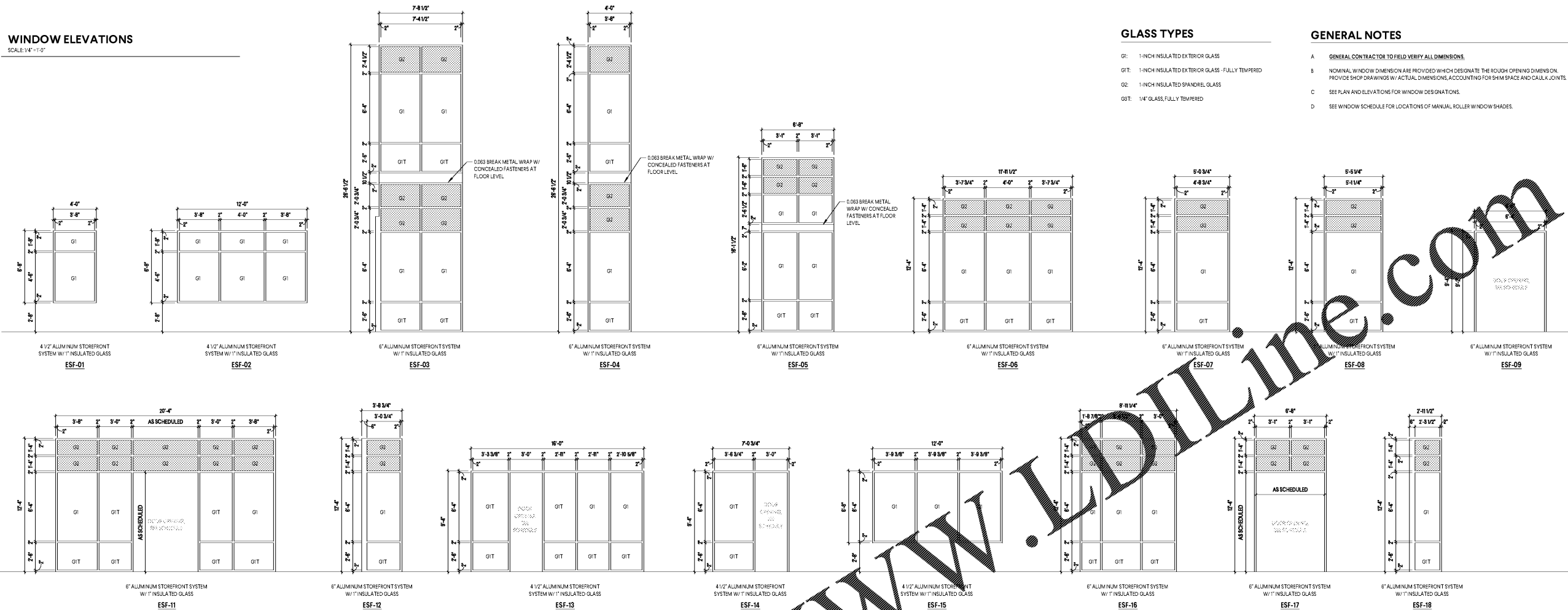


WINDOW ELEVATIONS

SCALE: 1/4" = 1'-0"



GLASS TYPES

- G1: 1-INCH INSULATED EXTERIOR GLASS
- G2: 1-INCH INSULATED EXTERIOR GLASS - FULLY TEMPERED
- G3: 1-INCH INSULATED SPANDREL GLASS
- G4: 1/4" GLASS, FULLY TEMPERED

GENERAL NOTES

- A GENERAL CONTRACTOR TO FIELD VERIFY ALL DIMENSIONS.
- B NOMINAL WINDOW DIMENSIONS ARE PROVIDED WHICH DESIGNATE THE ROUGH OPENING DIMENSIONS. PROVIDE SHOP DRAWINGS W/ ACTUAL DIMENSIONS, ACCOUNTING FOR SHIM SPACE AND CAULK JOINTS.
- C SEE PLAN AND ELEVATIONS FOR WINDOW DESIGNATIONS.
- D SEE WINDOW SCHEDULE FOR LOCATIONS OF MANUAL ROLLER WINDOW SHADES.

WINDOW SCHEDULE

| WINDOW NUMBER | TYPE MARK | WIDTH | HEIGHT | SILL HEIGHT | HEAD | JAMB | SILL | COMMENTS |
|---------------|-----------|-------------|-------------|-------------|------------------|---------------------------|----------|--|
| E101 | ESF-06 | 11'-11 1/2" | 12'-4" | 0'-0" | 11/A5.31 | 1/A1.40 | 5/A5.32 | MANUAL ROLLER WINDOW SHADE |
| E102 | ESF-06 | 11'-11 1/2" | 12'-4" | 0'-0" | 11/A5.31 | 1/A1.40 | 5/A5.32 | MANUAL ROLLER WINDOW SHADE |
| E103 | ESF-06 | 11'-11 1/2" | 12'-4" | 0'-0" | 11/A5.31 | 1/A1.40; 2/A1.40 | 5/A5.32 | MANUAL ROLLER WINDOW SHADE |
| E104 | ESF-07 | 5'-0 3/4" | 12'-4" | 0'-0" | 11/A5.31 | 2/A1.40; 5/A1.40 | 5/A5.32 | MANUAL ROLLER WINDOW SHADE |
| E105 | ESF-01 | 4'-0" | 6'-8" | 2'-8" | 4/A5.31 | 2/A6.20 | 5/A5.30 | MANUAL ROLLER WINDOW SHADE |
| E106 | ESF-01 | 4'-0" | 6'-8" | 2'-8" | 4/A5.31 | 2/A6.20 | 5/A5.30 | MANUAL ROLLER WINDOW SHADE |
| E107 | ESF-01 | 4'-0" | 6'-8" | 2'-8" | 4/A5.31 | 2/A6.20 | 5/A5.30 | MANUAL ROLLER WINDOW SHADE |
| E108 | ESF-04 | 4'-0" | 26'-6 1/2" | 0'-0" | 7/A5.32; 8/A5.32 | 2/A1.42 | 10/A5.32 | |
| E109 | ESF-03 | 7'-8 1/2" | 26'-6 1/2" | 0'-0" | 7/A5.32; 8/A5.32 | 6/A1.41; 1/A1.42; 3/A1.43 | 10/A5.32 | |
| E110 | ESF-01 | 4'-0" | 6'-8" | 2'-8" | 4/A5.30 | 2/A6.20 | 5/A5.30 | MANUAL ROLLER WINDOW SHADE |
| E111 | ESF-01 | 4'-0" | 6'-8" | 2'-8" | 4/A5.30 | 2/A6.20 | 5/A5.30 | MANUAL ROLLER WINDOW SHADE |
| E112 | ESF-01 | 4'-0" | 6'-8" | 2'-8" | 4/A5.30 | 2/A6.20 | 5/A5.30 | MANUAL ROLLER WINDOW SHADE |
| E113 | ESF-01 | 4'-0" | 6'-8" | 2'-8" | 4/A5.30 | 2/A6.20 | 5/A5.30 | MANUAL ROLLER WINDOW SHADE |
| E114 | ESF-01 | 4'-0" | 6'-8" | 2'-8" | 4/A5.30 | 2/A6.20 | 5/A5.30 | MANUAL ROLLER WINDOW SHADE |
| E115 | ESF-01 | 4'-0" | 6'-8" | 2'-8" | 4/A5.30 | 2/A6.20 | 5/A5.30 | MANUAL ROLLER WINDOW SHADE |
| E116 | ESF-01 | 4'-0" | 6'-8" | 2'-8" | 4/A5.30 | 2/A6.20 | 5/A5.30 | MANUAL ROLLER WINDOW SHADE |
| E117 | ESF-01 | 4'-0" | 6'-8" | 2'-8" | 4/A5.30 | 2/A6.20 | 5/A5.30 | MANUAL ROLLER WINDOW SHADE |
| E118 | ESF-01 | 4'-0" | 6'-8" | 2'-8" | 4/A5.30 | 2/A6.20 | 5/A5.30 | MANUAL ROLLER WINDOW SHADE |
| E119 | ESF-01 | 4'-0" | 6'-8" | 2'-8" | 4/A5.30 | 2/A6.20 | 5/A5.30 | MANUAL ROLLER WINDOW SHADE |
| E120 | ESF-15 | 12'-0" | 6'-8" | 2'-8" | 10/A5.30 | 3/A6.20 | 11/A5.30 | MANUAL ROLLER WINDOW SHADE |
| E121 | ESF-16 | 8'-11 1/4" | 12'-4" | 0'-0" | 4/A5.33 | 9/A1.40; 4/A1.41 | 5/A5.32 | |
| E122 | ESF-12 | 3'-8 3/4" | 12'-4" | 0'-0" | 4/A5.33 | 9/A1.40 | 5/A5.32 | PROVIDE MULLION CORNER PER MANUF. STANDARD DETAILS |
| E123 | ESF-11 | 20'-4" | 12'-4" | 0'-0" | 4/A5.33 | --- | 5/A5.32 | PROVIDE MULLION CORNER PER MANUF. STANDARD DETAILS |
| E124 | ESF-12 | 3'-8 3/4" | 12'-4" | 0'-0" | 4/A5.33 | 8/A1.40 | 5/A5.32 | (ESF-12) - OPPOSITE |
| E125 | ESF-17 | 6'-8" | 12'-4" | 0'-0" | 4/A5.33 | 8/A1.40; 10/A1.40 | 5/A5.32 | |
| E126 | ESF-01 | 4'-0" | 6'-8" | 2'-8" | 4/A5.31 | 2/A6.20 | 5/A5.30 | MANUAL ROLLER WINDOW SHADE |
| E127 | ESF-01 | 4'-0" | 6'-8" | 2'-8" | 4/A5.31 | 2/A6.20 | 5/A5.30 | MANUAL ROLLER WINDOW SHADE |
| E128 | ESF-01 | 4'-0" | 6'-8" | 2'-8" | 4/A5.31 | 1/A1.43 | 5/A5.30 | MANUAL ROLLER WINDOW SHADE |
| E129 | ESF-08 | 5'-5 1/4" | 12'-4" | 0'-0" | 11/A5.31 | 1/A1.43 | 5/A5.32 | MANUAL ROLLER WINDOW SHADE; PROVIDE MULLION CORNER PER MANUF. STANDARD DETAILS |
| E130 | ESF-18 | 2'-11 1/2" | 12'-4" | 0'-0" | 11/A5.31 | 1/A1.40 | 5/A5.32 | MANUAL ROLLER WINDOW SHADE; PROVIDE MULLION CORNER PER MANUF. STANDARD DETAILS |
| E201 | ESF-02 | 12'-0" | 6'-8" | 2'-8" | 2/A5.32 | 1/A6.20 | 10/A5.31 | MANUAL ROLLER WINDOW SHADE |
| E202 | ESF-02 | 12'-0" | 6'-8" | 2'-8" | 2/A5.32 | 1/A6.20 | 10/A5.31 | MANUAL ROLLER WINDOW SHADE |
| E203 | ESF-02 | 12'-0" | 6'-8" | 2'-8" | 2/A5.31 | 1/A6.20 | 3/A5.31 | MANUAL ROLLER WINDOW SHADE |
| E204 | ESF-02 | 12'-0" | 6'-8" | 2'-8" | 2/A5.31 | 1/A6.20 | 3/A5.31 | MANUAL ROLLER WINDOW SHADE |
| E205 | ESF-02 | 12'-0" | 6'-8" | 2'-8" | 2/A5.31 | 1/A6.20 | 3/A5.31 | MANUAL ROLLER WINDOW SHADE |
| E206 | ESF-02 | 12'-0" | 6'-8" | 2'-8" | 2/A5.30 | 1/A6.20 | 3/A5.30 | MANUAL ROLLER WINDOW SHADE |
| E207 | ESF-02 | 12'-0" | 6'-8" | 2'-8" | 2/A5.30 | 1/A6.20 | 3/A5.30 | MANUAL ROLLER WINDOW SHADE |
| E208 | ESF-02 | 12'-0" | 6'-8" | 2'-8" | 2/A5.30 | 1/A6.20 | 5/A5.30 | MANUAL ROLLER WINDOW SHADE |
| E209 | ESF-02 | 12'-0" | 6'-8" | 2'-8" | 2/A5.30 | 1/A6.20 | 3/A5.30 | MANUAL ROLLER WINDOW SHADE |
| E210 | ESF-02 | 12'-0" | 6'-8" | 2'-8" | 2/A5.30 | 1/A6.20 | 3/A5.30 | MANUAL ROLLER WINDOW SHADE |
| E211 | ESF-15 | 12'-0" | 6'-8" | 2'-8" | 8/A5.30 | 3/A6.20 | 9/A5.30 | MANUAL ROLLER WINDOW SHADE |
| E212 | ESF-15 | 12'-0" | 6'-8" | 2'-8" | 8/A5.30 | 3/A6.20 | 9/A5.30 | MANUAL ROLLER WINDOW SHADE |
| E213 | ESF-15 | 12'-0" | 6'-8" | 2'-8" | 8/A5.30 | 3/A6.20 | 9/A5.30 | MANUAL ROLLER WINDOW SHADE |
| E214 | ESF-15 | 12'-0" | 6'-8" | 2'-8" | 8/A5.30 | 3/A6.20 | 9/A5.30 | MANUAL ROLLER WINDOW SHADE |
| E215 | ESF-05 | 6'-8" | 16'-11 1/2" | 0'-0" | 4/A5.34 | 2/A1.41; 5/A1.41 | 2/A5.34 | |
| E216 | ESF-02 | 12'-0" | 6'-8" | 2'-8" | 2/A5.32 | 1/A6.20 | 3/A5.32 | MANUAL ROLLER WINDOW SHADE |
| I101 | ESF-13 | 16'-0" | 9'-4" | 0'-0" | 5/A5.33 | 6/A1.40; 4/A6.20 | --- | |
| I102 | ESF-14 | 7'-0 1/2" | 9'-4" | 0'-0" | 5/A5.33 | 4/A6.20; 5/A6.20 | --- | |

1 ENLARGED JAMB DETAIL @ BRICK
SCALE: 1 1/2" = 1'-0"

2 ENLARGED JAMB DETAIL @ CMU VENEER
SCALE: 1 1/2" = 1'-0"

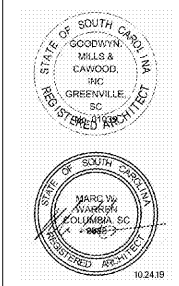
3 ENLARGED JAMB DETAIL @ METAL PANEL
SCALE: 1 1/2" = 1'-0"

4 ENLARGED PLAN DETAIL
SCALE: 1 1/2" = 1'-0"

5 ENLARGED PLAN DETAIL
SCALE: 1 1/2" = 1'-0"



1219 Wayne Street
Columbia, SC 29201
T: 803.766.1235
GMCNETWORK.COM



| ISSUE | DATE |
|---------------|----------|
| BID DOCUMENTS | 10.24.19 |

MILLBROOK ELEMENTARY SCHOOL -
ADDITION AND RENOVATIONS
255 E PINE LOG RD., AIKEN, SC 29803

GMC # ACOL180004

WINDOW SCHEDULE AND ELEVATIONS

A6.20