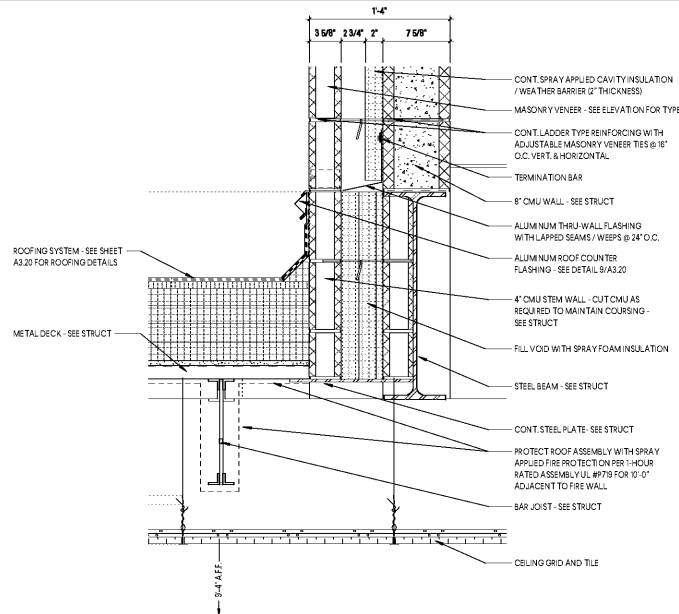
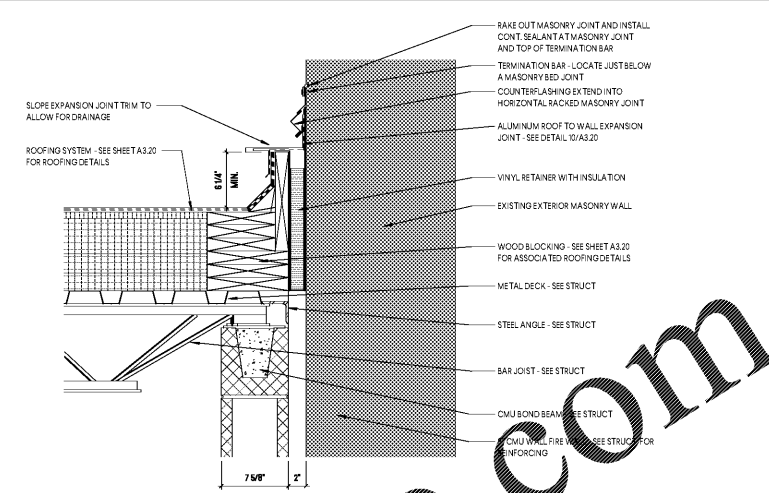


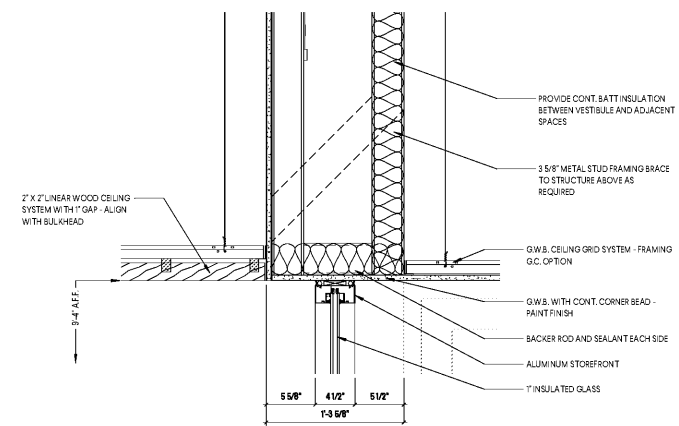
1 ENLARGED 2-INCH SEISMIC EXPANSION JOINT DETAIL
SCALE: 1 1/2" = 1'-0"



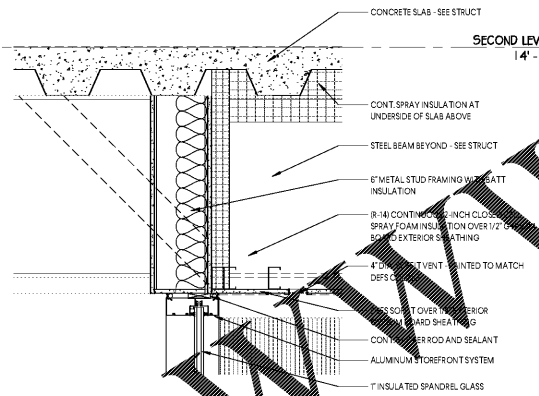
2 ENLARGED ROOF / WALL DETAIL
SCALE: 1 1/2" = 1'-0"



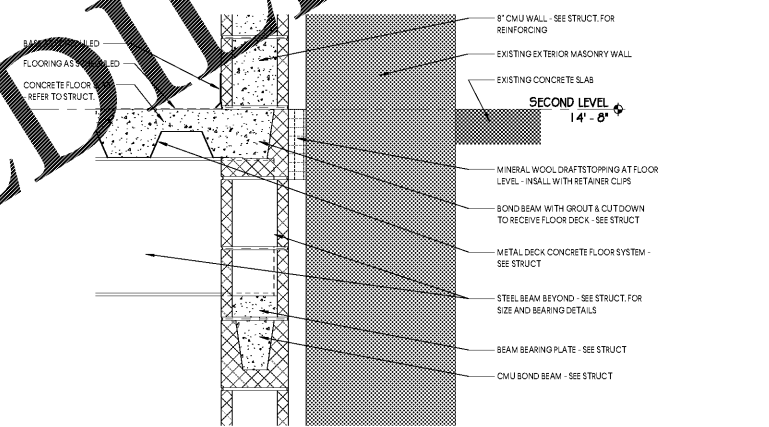
7 ENLARGED SECTION DETAIL
SCALE: 1 1/2" = 1'-0"



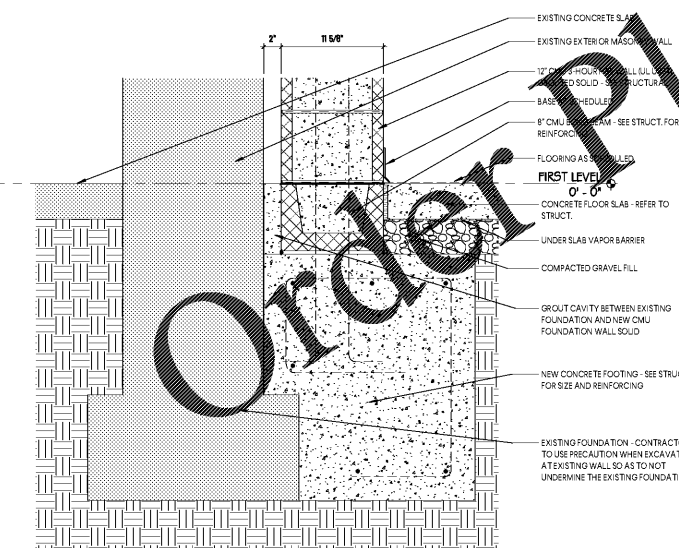
5 ENLARGED INTERIOR STOREFRONT HEAD DETAIL
SCALE: 1 1/2" = 1'-0"



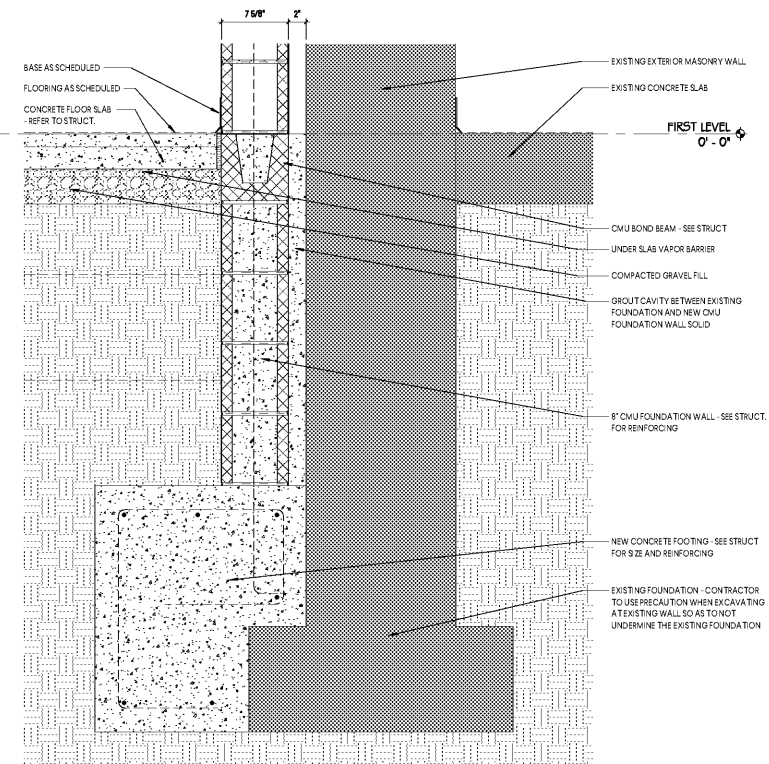
4 ENLARGED STOREFRONT HEAD DETAIL - TYPICAL
SCALE: 1 1/2" = 1'-0"



8 ENLARGED SECTION DETAIL
SCALE: 1 1/2" = 1'-0"



3 ENLARGED FOUNDATION DETAIL
SCALE: 1 1/2" = 1'-0"



9 ENLARGED FOUNDATION DETAIL
SCALE: 1 1/2" = 1'-0"

GMC

1219 Wayne Street
Columbia, SC 29201
T 803.766.1235
GMCNETWORK.COM



ISSUE DATE	DATE
BID DOCUMENTS	10.24.19

DRAWN BY: JJJW
CHECKED BY: JJJW

MILLBROOK ELEMENTARY
SCHOOL - ADDITION AND
RENOVATIONS
255 E PINE LOG RD., AIKEN, SC 29803
GMC # ACOL180004

SECTION DETAILS

A5.33