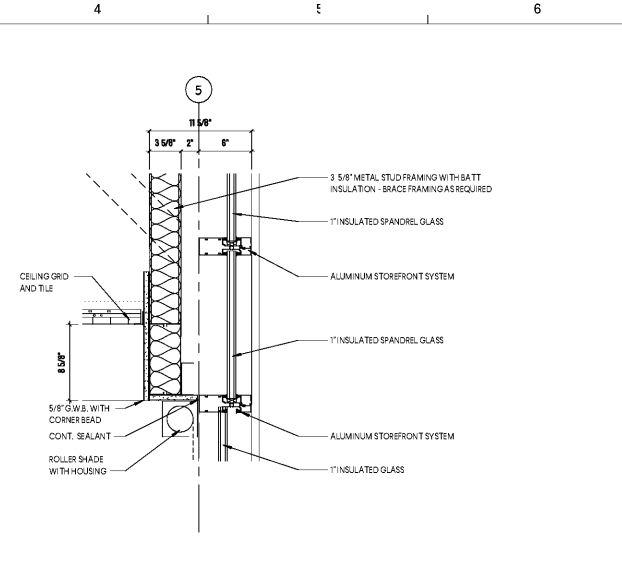
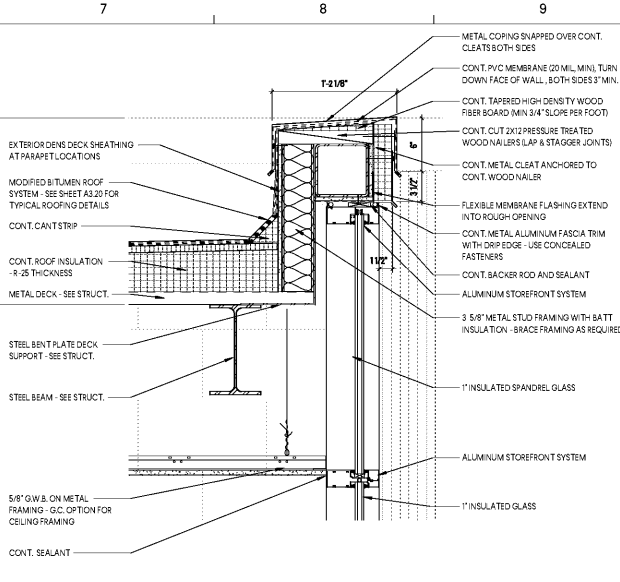


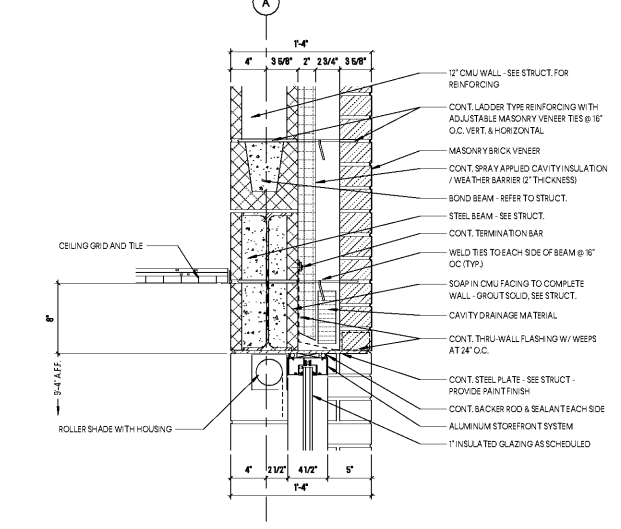
**1 ENLARGED PARAPET DETAIL**  
SCALE: 1 1/2" = 1'-0"



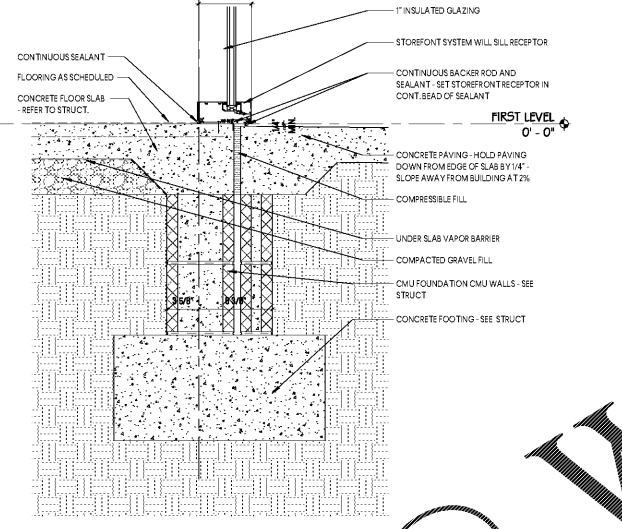
**4 ENLARGED CEILING DETAIL**  
SCALE: 1 1/2" = 1'-0"



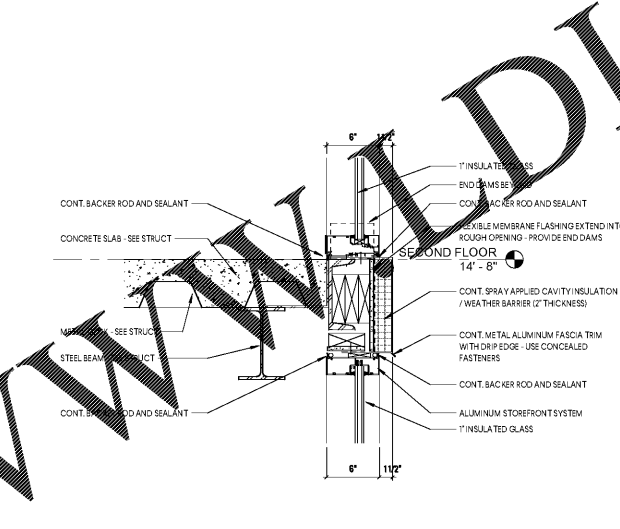
**7 ENLARGED PARAPET DETAIL**  
SCALE: 1 1/2" = 1'-0"



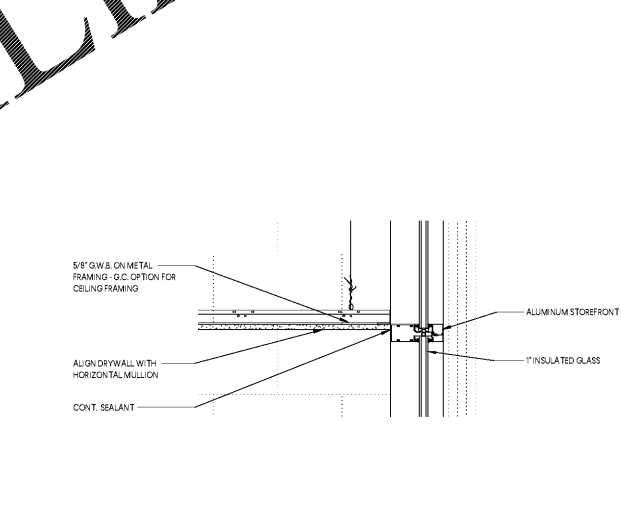
**2 ENLARGED HEAD DETAIL**  
SCALE: 1 1/2" = 1'-0"



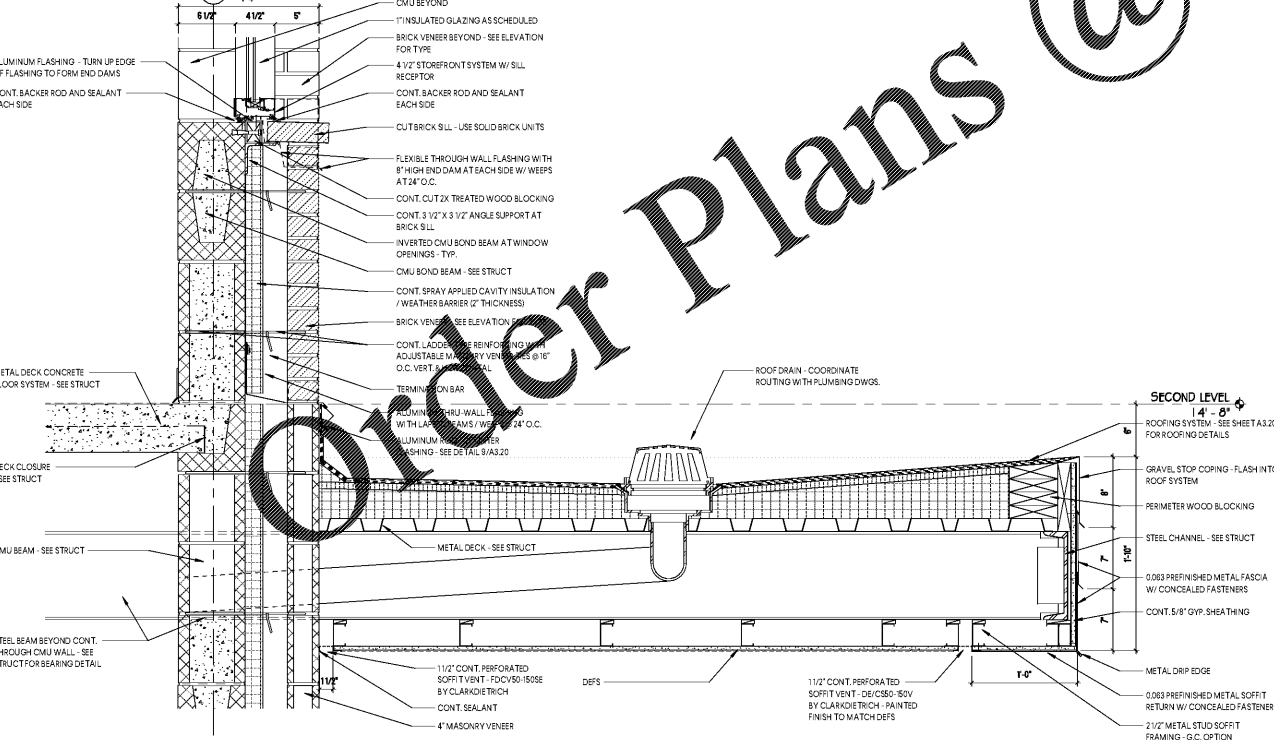
**5 ENLARGED FOUNDATION DETAIL**  
SCALE: 1 1/2" = 1'-0"



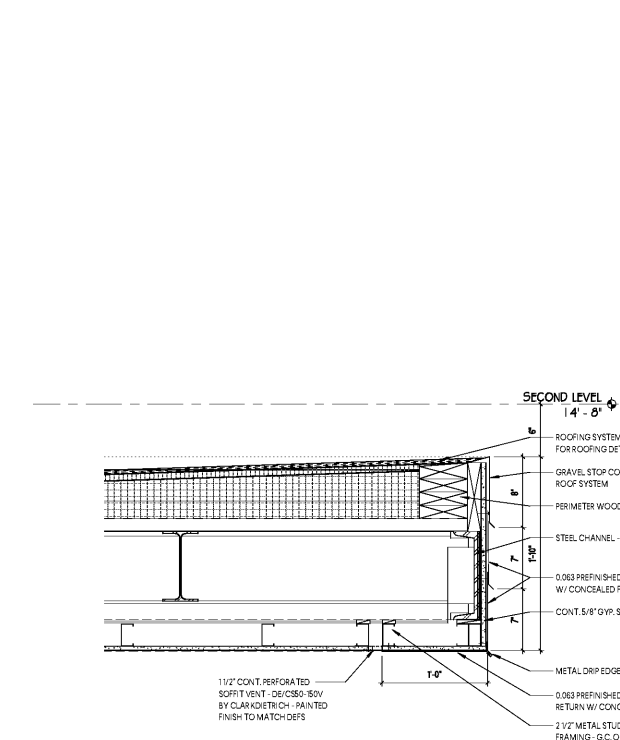
**8 ENLARGED SILL / HEAD DETAIL**  
SCALE: 1 1/2" = 1'-0"



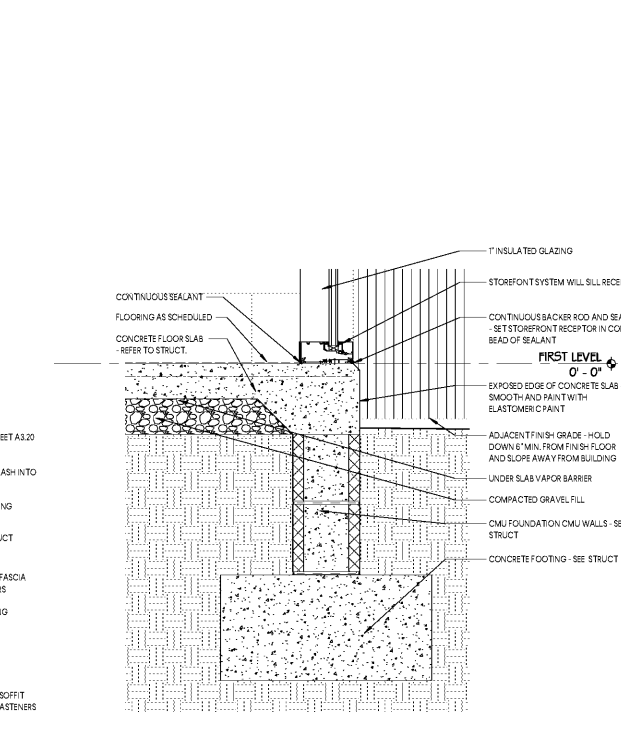
**9 ENLARGED CEILING DETAIL**  
SCALE: 1 1/2" = 1'-0"



**3 ENLARGED SILL / CANOPY DETAIL**  
SCALE: 1 1/2" = 1'-0"



**6 ENLARGED CANOPY DETAIL**  
SCALE: 1 1/2" = 1'-0"



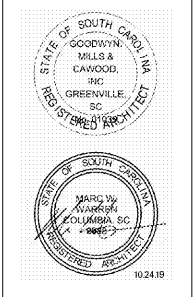
**10 ENLARGED SILL / FOUNDATION DETAIL**  
SCALE: 1 1/2" = 1'-0"

WWW.DIline.com

Order Plans @

GMC

1219 Wayne Street  
Columbia, SC 29201  
T: 803.766.1235  
gmcnetwork.com



ISSUE	DATE
BID DOCUMENTS	10.24.19

MILLBROOK ELEMENTARY SCHOOL -  
ADDITION AND RENOVATIONS  
255 E PINE LOG RD., AIKEN, SC 29803  
GMC # ACOL180004

SECTION DETAILS

A5.32

10/29/2019 5:27:48 AM