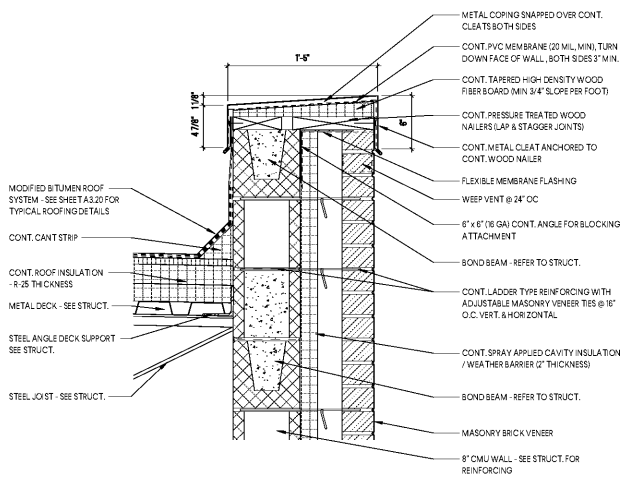
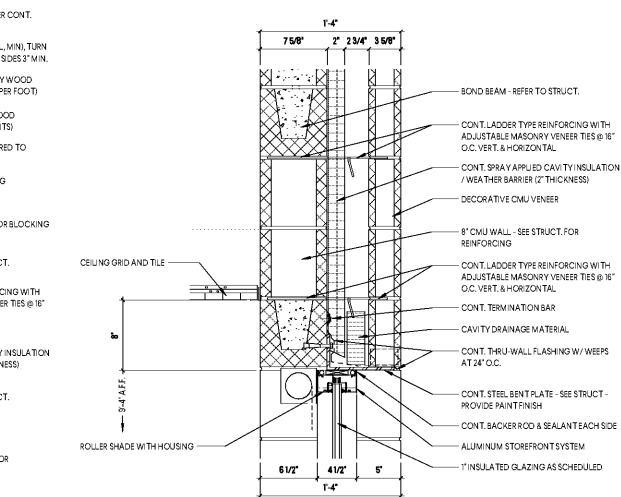


10/29/2019 5:27:20 AM

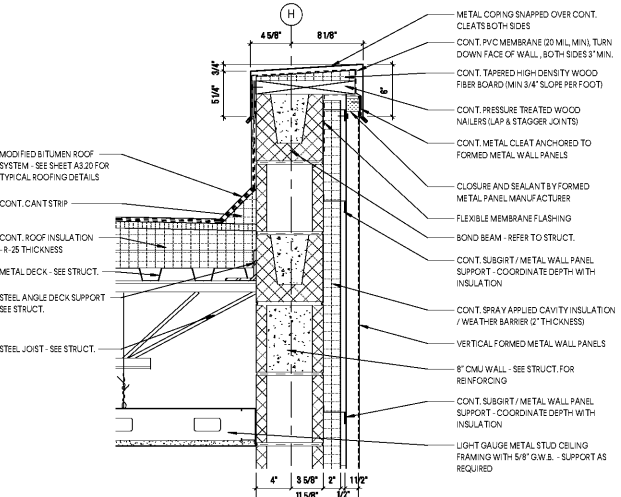
1 ENLARGED PARAPET DETAIL
SCALE: 1 1/2" = 1'-0"



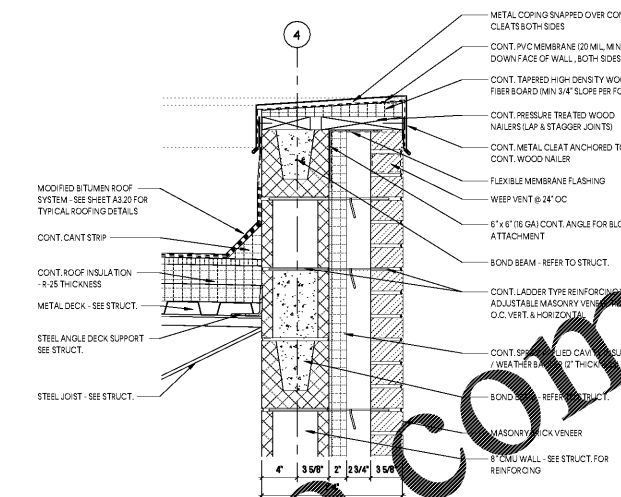
4 ENLARGED HEAD DETAIL
SCALE: 1 1/2" = 1'-0"



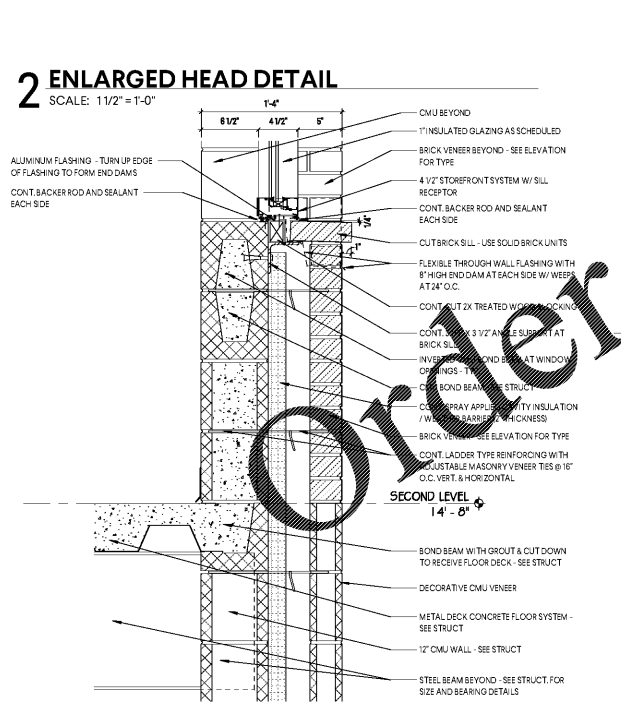
6 ENLARGED PARAPET DETAIL
SCALE: 1 1/2" = 1'-0"



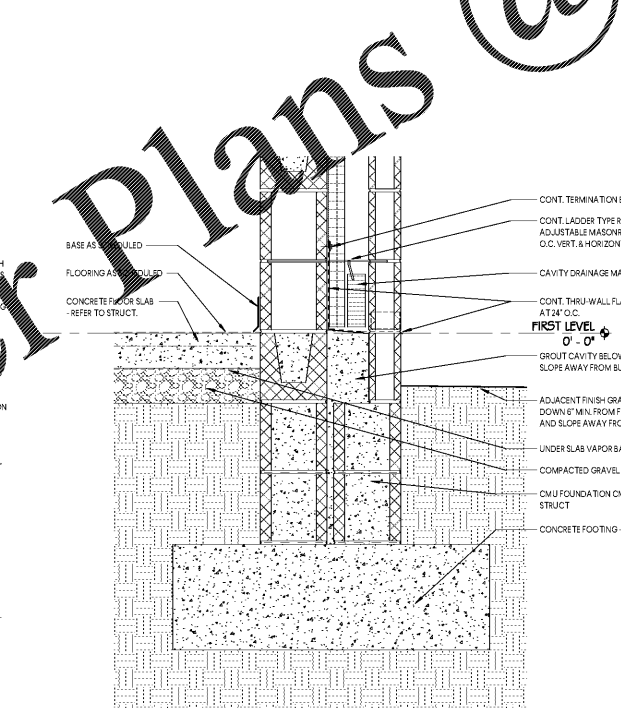
9 ENLARGED PARAPET DETAIL
SCALE: 1 1/2" = 1'-0"



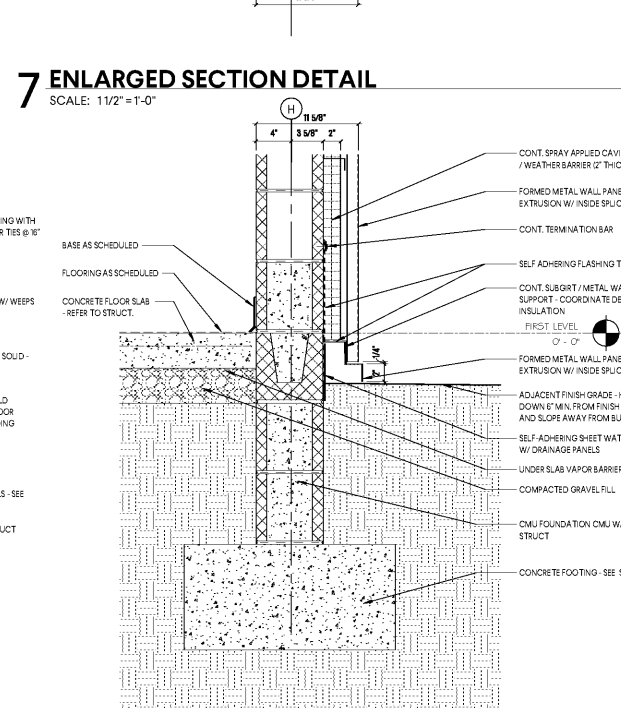
2 ENLARGED HEAD DETAIL
SCALE: 1 1/2" = 1'-0"



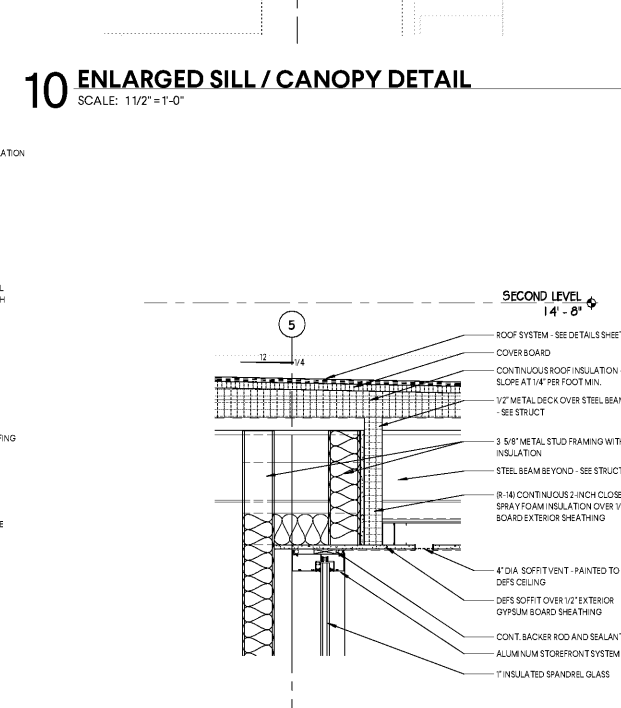
5 ENLARGED FOUNDATION DETAIL
SCALE: 1 1/2" = 1'-0"



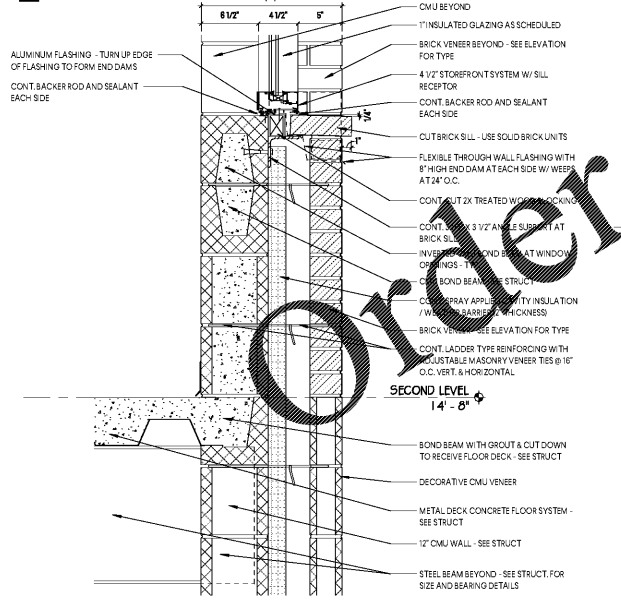
7 ENLARGED SECTION DETAIL
SCALE: 1 1/2" = 1'-0"



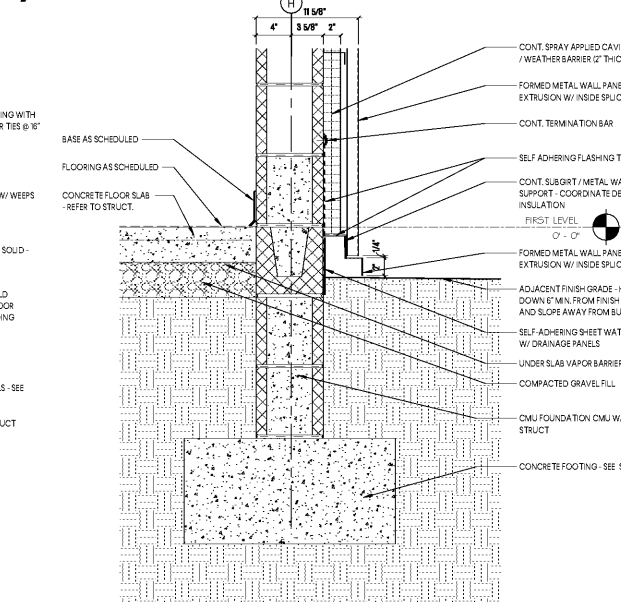
10 ENLARGED SILL / CANOPY DETAIL
SCALE: 1 1/2" = 1'-0"



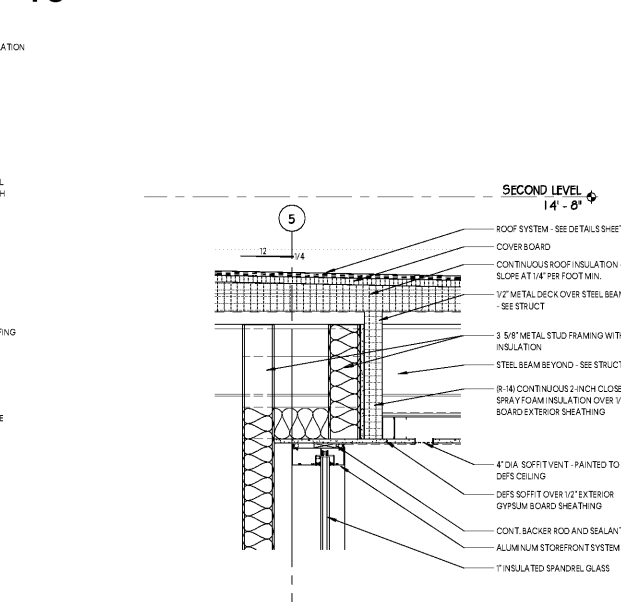
3 ENLARGED SILL DETAIL
SCALE: 1 1/2" = 1'-0"



8 ENLARGED FOUNDATION DETAIL
SCALE: 1 1/2" = 1'-0"



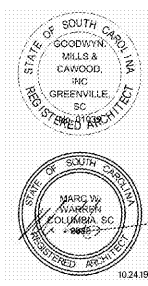
11 ENLARGED HEAD DETAIL
SCALE: 1 1/2" = 1'-0"



Order plans @ WWW.AJIDLING.COM



1219 Wayne Street
Columbia, SC 29201
T: 803.766.1235
GMCNETWORK.COM



ISSUE DATE: 10.24.19
BID DOCUMENTS
DRAWN BY: JKW
CHECKED BY: JWW

MILLBROOK ELEMENTARY SCHOOL - ADDITION AND RENOVATIONS
255 E PINE LOG RD., AIKEN, SC 29803

GMC # ACOL180004

SECTION DETAILS

A5.31