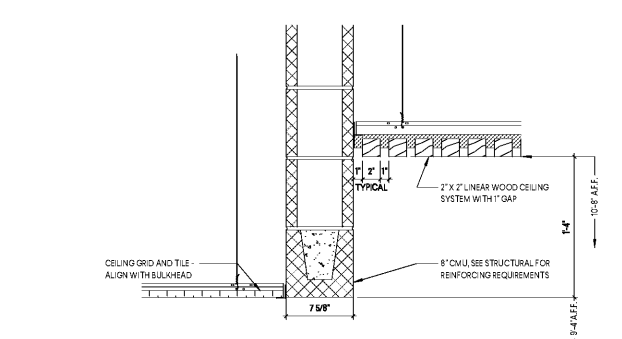
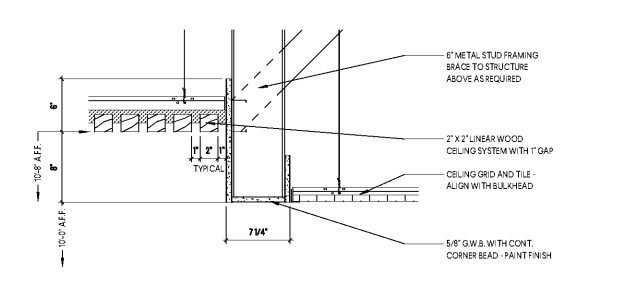


1 CEILING DETAIL
SCALE: 1 1/2" = 1'-0"

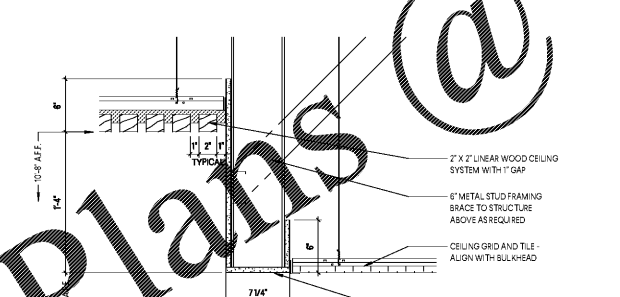
2 CEILING DETAIL
SCALE: 1 1/2" = 1'-0"



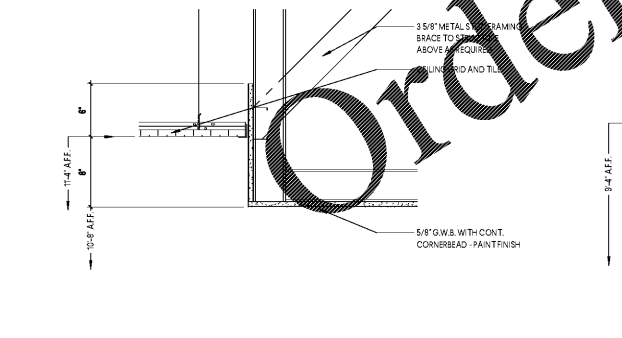
3 CEILING DETAIL
SCALE: 1 1/2" = 1'-0"



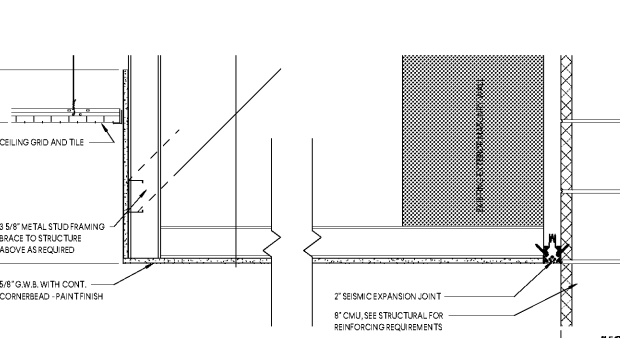
4 CEILING DETAIL
SCALE: 1 1/2" = 1'-0"



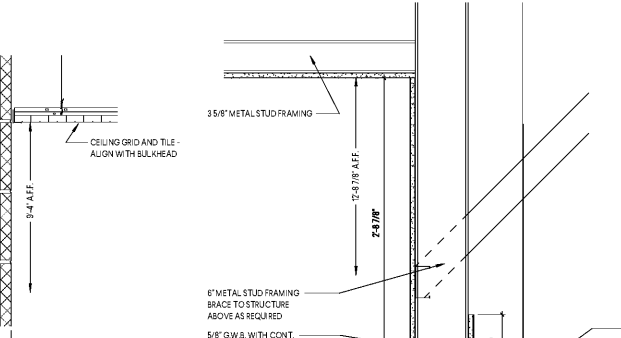
5 CEILING DETAIL
SCALE: 1 1/2" = 1'-0"



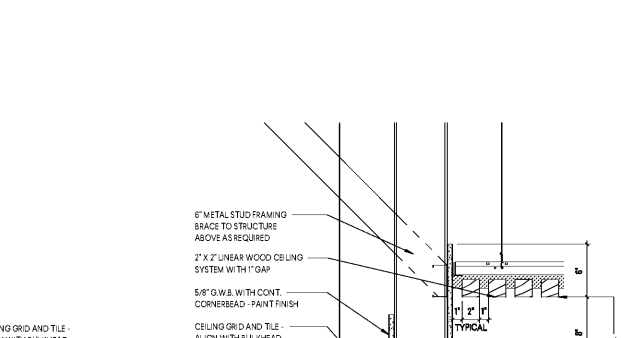
8 CEILING DETAIL
SCALE: 1 1/2" = 1'-0"



9 CEILING DETAIL
SCALE: 1 1/2" = 1'-0"



10 CEILING DETAIL
SCALE: 1 1/2" = 1'-0"

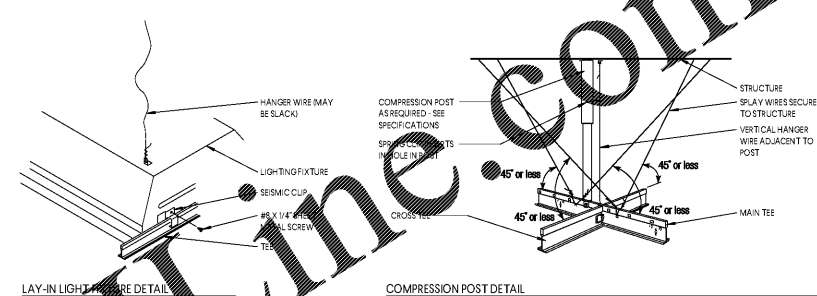
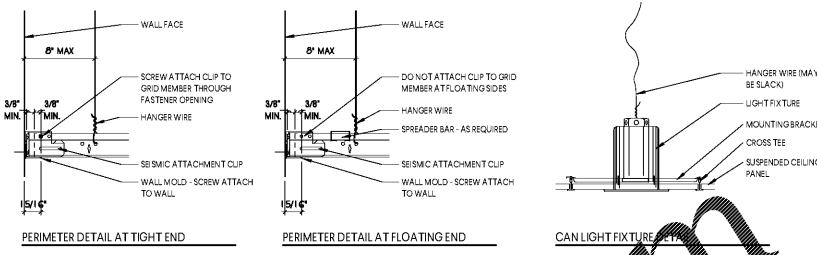


11 CEILING DETAIL
SCALE: 1 1/2" = 1'-0"

GENERAL NOTES

- A GENERAL CONTRACTOR TO FIELD VERIFY ALL EXISTING CONDITIONS. BRING ALL DISCREPANCIES TO THE ARCHITECT'S ATTENTION PRIOR TO PROCEEDING WITH THE WORK.
- B REFER TO ELECTRICAL, MECHANICAL, AND FIRE PROTECTION DRAWINGS FOR LOCATIONS AND QUANTITIES OF LIGHTS, SURETY, AND THERMOSTAT GRILLS, FIRE SPRINKLERS, AND OTHER DEVICES. DEVICES ARE SHOWN ON ARCHITECTURAL DRAWINGS FOR COORDINATION AND REFERENCE ONLY.
- C REFER TO ELECTRICAL AND MECHANICAL DRAWINGS FOR DEMOLITION OF EXISTING DEVICES AND FIXTURES.
- D ALL EXISTING LIGHT FIXTURES, MECHANICAL GRILLS, AND ALL OTHER DEVICES ARE TO REMAIN, UNLESS OTHERWISE SPECIFIED. PROVIDE TEMPORARY SUPPORT FOR SUCH ITEMS AS REQUIRED.
- E THE CEILING LAYOUT AND CONFIGURATION OF DEVICES SHOWN IN THIS SET OF DRAWINGS IS FOR INFORMATION ONLY. ALL DEVICES SHOULD BE LOCATED IN THEIR EXISTING LOCATIONS UNLESS OTHERWISE SPECIFIED. THE CONFIGURATIONS IN THE FIELD WILL SUPERSEDE THOSE SHOWN ON THIS PLAN.
- F THE PROJECT IS SEISMIC DESIGN CATEGORY C, AS REFERENCED ON SHEET 0111. ALL CEILING SYSTEMS AND SUSPENDED FIXTURES MUST MEET ALL REQUIREMENTS AS MANDATED UNDER SEISMIC DESIGN CATEGORY C.
- G UL 489, 1-HOUR HORIZONTAL ASSEMBLY ABOVE ENTIRE CORRIDOR (17) CEILING. FOR SECTION 208.4, 1-HOUR CEILING CONSISTS OF 6" METAL STUD FRAMING BRACE TO STRUCTURE ABOVE AS REQUIRED. THIS SYSTEM IS A QUALIFIED DESIGN SUBMITTAL. FRAMING TO BE DESIGNED AND SUBMITTED BY GENERAL CONTRACTOR'S DIVISION 5 LIGHT GAUGE FRAMING SUBCONTRACTOR. SEE STRUCTURAL SPECIFICATIONS.
- H THE GENERAL CONTRACTOR IS RESPONSIBLE FOR MAINTAINING THE INTERIOR TYPE OF ALL FINISHED CONSTRUCTION SCHEDULED TO REMAIN.

- INSTALL ACOUSTICAL PAENL CEILING TO ASTM E580 AND ASCE 7 SEISMIC DESIGN CATEGORY C.
- MINIMUM 7/8" WALL MOLDING
- SUSPENSION SYSTEM MUST NOT BE ATTACHED TO THE WALL MOLDING
- MINIMUM 3/8" CLEARANCE ON ALL SIDES
- MINIMUM 3/8" OVERLAP OF THE SUSPENS ON SYSTEM ON THE WALL MOLDING
- ENDS OF MAIN BEAMS AND CROSS TEES MUST BE TIED TOGETHER TO PREVENT THEIR SPREADING
- SAFETY WIRES REQUIRED ON LIGHT FIXTURES



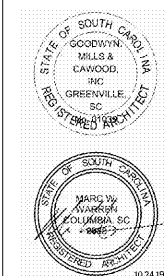
TYPICAL CEILING INSTALLATION DETAILS

SCALE: 3" = 1'

Order Plans @ www.LDOnline.com



1219 Wayne Street
Columbia, SC 29201
T: 803.766.1235
GMCNETWORK.COM



ISSUE	DATE
BID DOCUMENTS	10.24.19

MILLBROOK ELEMENTARY SCHOOLS -
ADDITION AND RENOVATIONS
255 E PINE LOG RD., AIKEN, SC 29803
GMC # ACOL180004

CEILING DETAILS
A2.30