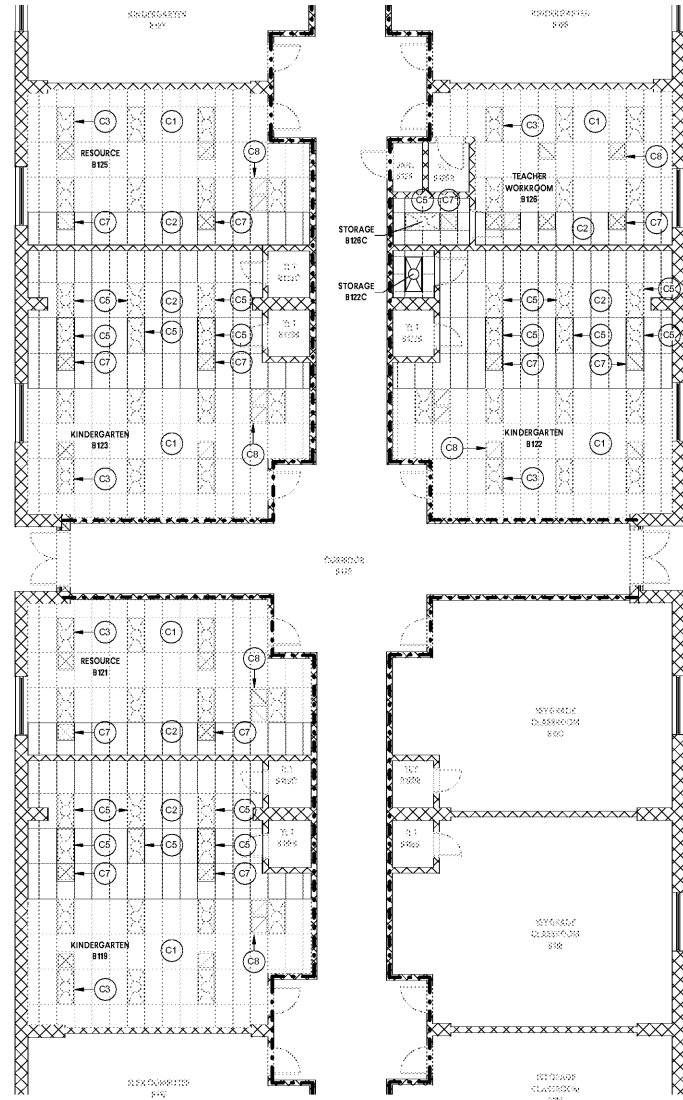
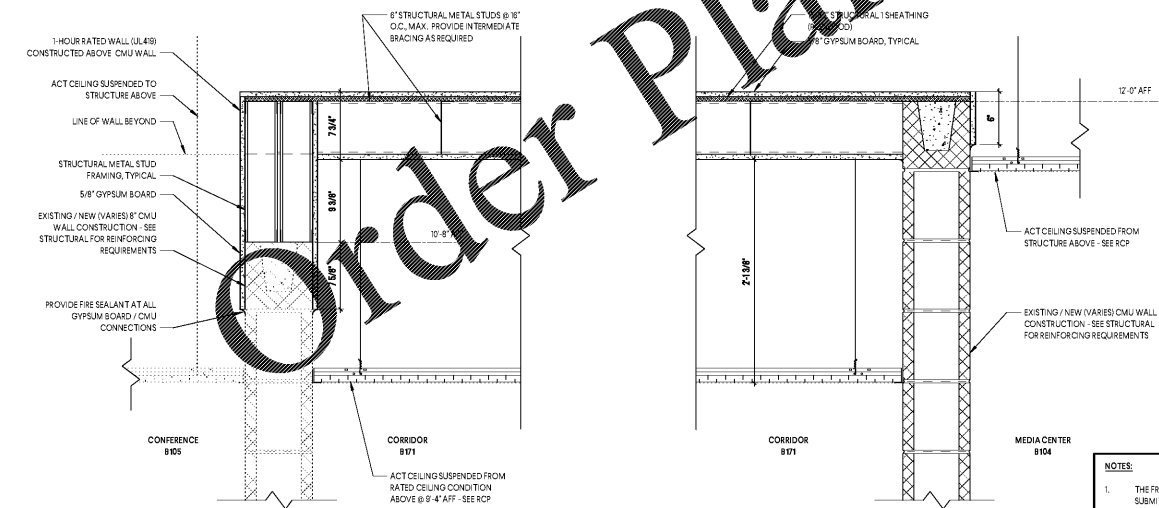
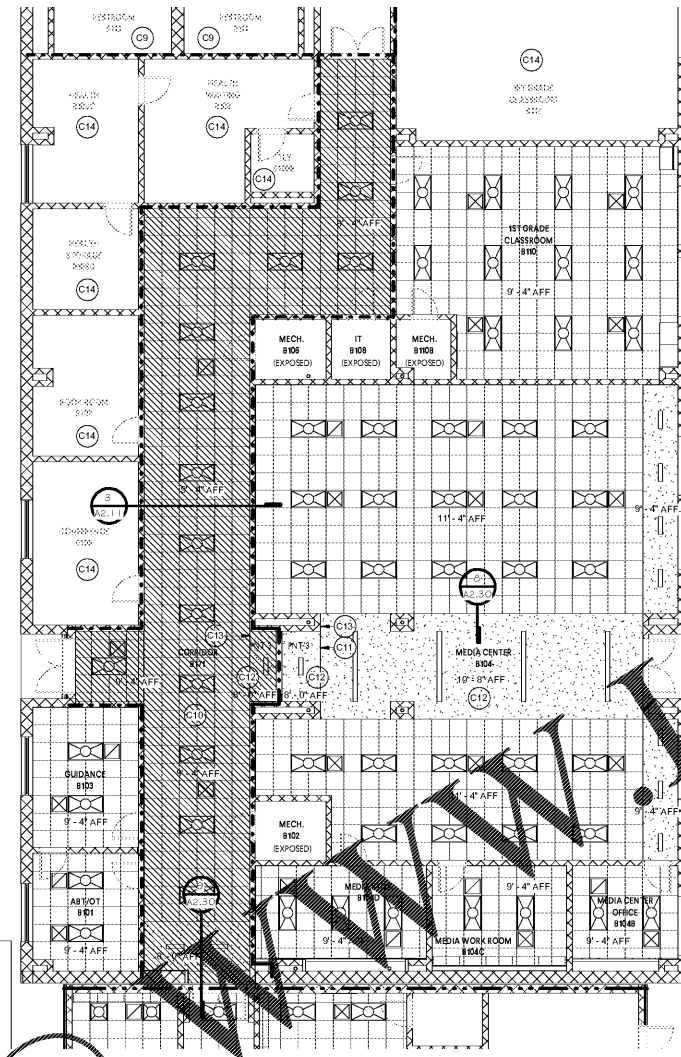


1 FIRST LEVEL - RCP - AREA 1-1
SCALE: 1/8" = 1'-0"



2 FIRST LEVEL - RCP - AREA 1-2
SCALE: 1/8" = 1'-0"



3 TYPICAL SECTION AT RATED CORRIDOR B171
SCALE: 1 1/2" = 1'-0"

NOTES:
1. THE FRAMING FOR THIS SYSTEM IS A DELIGATED DESIGN SUBMITTAL. FRAMING TO BE DESIGNED AND SUBMITTED BY GENERAL CONTRACTOR'S DIVISION 5 LIGHT GAUGE FRAMING SUBCONTRACTOR. SEE STRUCTURAL SPECIFICATIONS.
2. ALL PENETRATIONS MUST BE PROTECTED.

GENERAL NOTES

- A GENERAL CONTRACTOR TO FIELD VERIFY ALL EXISTING CONDITIONS. BRING ALL DISCREPANCIES TO THE ARCHITECT'S ATTENTION PRIOR TO PROCEEDING WITH THE WORK.
- B REFER TO ELECTRICAL, MECHANICAL, AND FIRE PROTECTION DRAWINGS FOR LOCATIONS AND QUANTITIES OF LIGHTS, SUPPLY AND RETURN AIR GRILLS, FIRE SPRINKLERS, AND OTHER DEVICES. DEVICES ARE SHOWN ON ARCHITECTURAL DRAWINGS FOR COORDINATION AND REFERENCE ONLY.
- C REFER TO ELECTRICAL AND MECHANICAL DRAWINGS FOR DEMOLITION OF EXISTING DEVICES AND FIXTURES.
- D ALL EXISTING LIGHT FIXTURES, MECHANICAL GRILLS, AND ALL OTHER DEVICES ARE TO REMAIN, UNLESS OTHERWISE NOTED. PROVIDE TEMPORARY SUPPORT FOR SUCH ITEMS AS REQUIRED.
- E THE CEILING LAYOUT AND CONFIGURATION OF DEVICES SHOWN IN THIS RCP IS FOR REFERENCE ONLY, AND MUST BE FIELD VERIFIED. ALL DEVICES SHOULD BE LOCATED IN THEIR EXISTING LOCATIONS, UNLESS OTHERWISE NOTED. FOR EXISTING CONDITIONS TO REMAIN, THE CONFIGURATIONS IN THE FIELD WILL SUPERSEDE THOSE SHOWN ON THIS PLAN.
- F THE PROJECT IS SEISMIC DESIGN CATEGORY C, AS SHOWN ON SHEET 010. ALL CEILING SYSTEMS AND SUSPENDED DEVICES MUST MEET ALL REQUIREMENTS AS MANDATED UNDER SECTION 0505.00, DIVISION 5.
- G UL419, 1-HOUR HORIZONTAL ASSEMBLY ABOVE THE CORRIDOR CEILING FIRE PROTECTION SYSTEM SHALL BE DESIGNED AND SUBMITTED BY GENERAL CONTRACTOR'S DIVISION 5 LIGHT GAUGE FRAMING SUBCONTRACTOR. SEE STRUCTURAL SPECIFICATIONS.
- H THE GENERAL CONTRACTOR SHALL BE RESPONSIBLE FOR MAINTAINING THE INTERIORITY OF ALL RATED CONSTRUCTION SCHEDULED TO REMAIN.

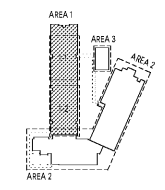
RCP LEGEND

- EXISTING DOOR
- EXISTING WALL
- LINE OF OBJECT ABOVE
- 2X2 ACT CEILING
- 10'-0" AFF CEILING HEIGHT
- 1-HOUR RATED CEILING ASSEMBLY ABOVE ACT CEILING @ 11'-5 3/8" AFF, UL 419 HORIZONTAL ASSEMBLY.
- GWS CEILING
- LWC-1
- 2X4 LIGHT FIXTURE
- 1X4 SUSPENDED LIGHT FIXTURE
- RETURN AIR GRILL
- SUPPLY AIR GRILL
- EXIT SIGN, SEE ELECTRICAL
- 1-HR FIRE BARRIER / FIRE PARTITION
- EXISTING RATED CONSTRUCTION
- 3-HR FIRE WALL
- EXISTING RATED CONSTRUCTION

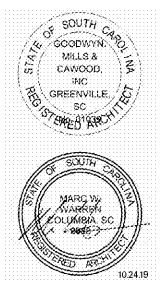
RCP KEYNOTE LEGEND

Key Value	Keynote Text
C1	EXISTING ACT CEILING TO REMAIN.
C2	NEW ACT-1 CEILING, MATCH EXISTING.
C3	EXISTING LIGHT FIXTURE TO REMAIN, TYPICAL.
C5	SALVAGED AND RELOCATED LIGHT FIXTURE, TYPICAL. SEE ELECTRICAL DRAWINGS.
C7	SALVAGED AND RELOCATED SUPPLY DIFFUSER, TYPICAL. SEE MECHANICAL DRAWINGS.
C8	EXISTING DIFFUSER TO REMAIN, TYPICAL.
C9	EXISTING CEILING TO REMAIN. PATCH AND REPAIR AS REQUIRED RESULTING FROM MECHANICAL WORK IN THIS AREA.
C10	1-HOUR RATED HORIZONTAL ASSEMBLY (UL 419) ABOVE ACT CEILING IN CORRIDOR B171 @ 11'-5 3/8" AFF. CEILING CONSISTS OF 6" STRUCTURAL STUDS. THIS SYSTEM IS A DELIGATED DESIGN SUBMITTAL. FRAMING TO BE DESIGNED AND SUBMITTED BY GENERAL CONTRACTOR'S DIVISION 5 LIGHT GAUGE FRAMING SUBCONTRACTOR.
C11	PROVIDE HORIZONTAL 1/2" SQUARE METAL REVEAL 1'-4" ABOVE SOFFIT @ 9'-4".
C12	PROVIDE 1/2" SQUARE METAL REVEAL WHERE SOFFIT MEETS CMU.
C13	CUSTOM "LIBRARY" PAINT STENCIL. ARCHITECT TO PROVIDE CAD FILE FOR STENCIL.
C14	EXISTING CEILING, FIXTURES, AND DEVICES TO REMAIN.

KEY PLAN



1219 Wayne Street
Columbia, SC 29201
T: 803.766.1235
gmcnetwork.com



ISSUE DATE	DATE
BID DOCUMENTS	10.24.19

MILLBROOK ELEMENTARY SCHOOL -
ADDITION AND RENOVATIONS
255 E PINE LOG RD., AIKEN, SC 29803

GMC # ACOL180004

FIRST LEVEL - RCP - AREA 1

A2.11