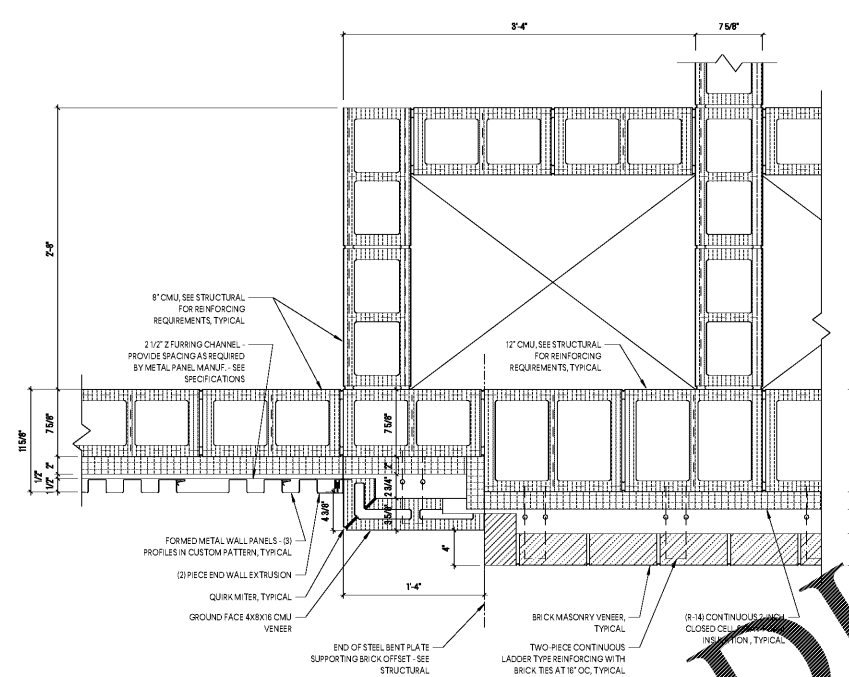
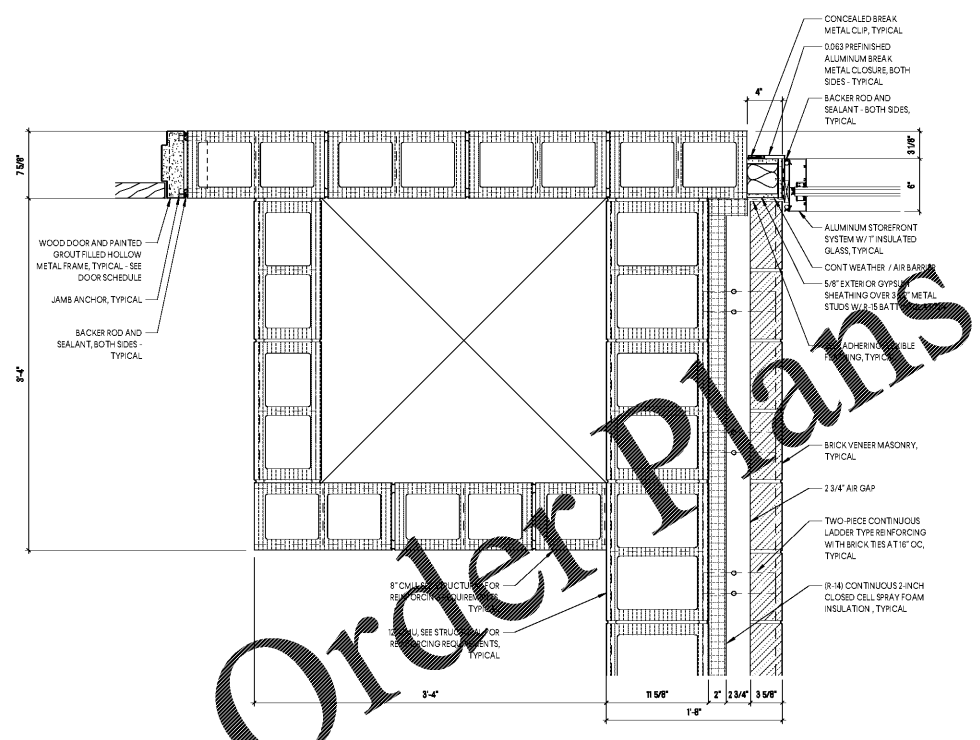


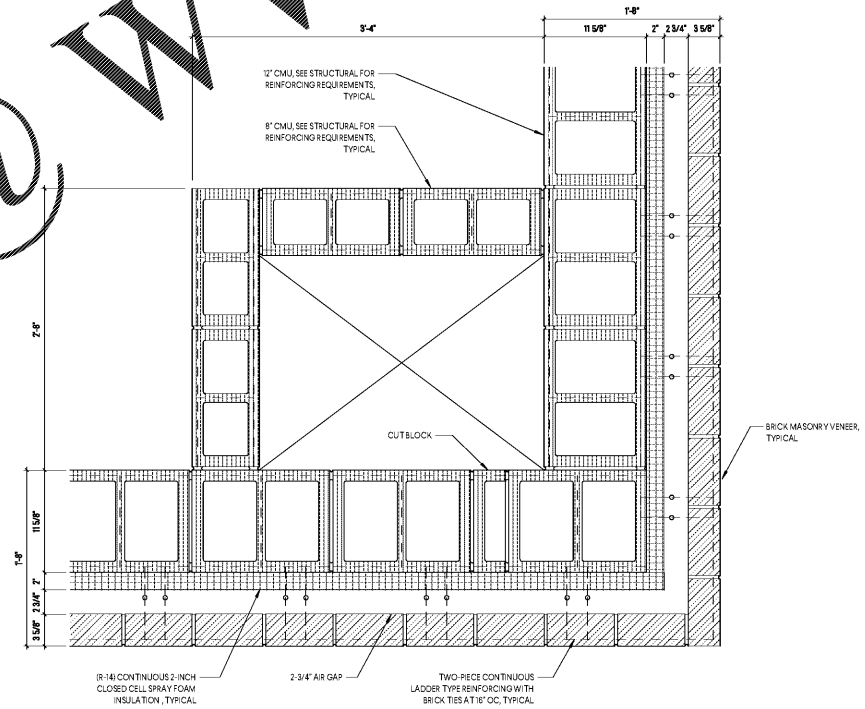
**1 ENLARGED PLAN DETAIL**  
SCALE: 1 1/2" = 1'-0"



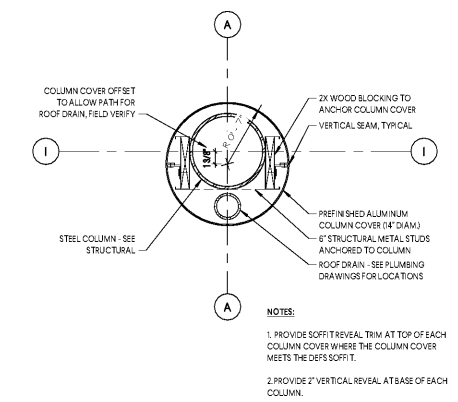
**2 ENLARGED PLAN DETAIL**  
SCALE: 1 1/2" = 1'-0"



**3 ENLARGED PLAN DETAIL**  
SCALE: 1 1/2" = 1'-0"



**4 ENLARGED PLAN DETAIL**  
SCALE: 1 1/2" = 1'-0"



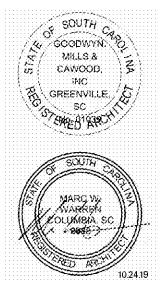
**5 TYPICAL COLUMN COVER DETAIL**  
SCALE: 1 1/2" = 1'-0"

**GENERAL NOTES**

- A SEE SPECIFICATIONS FOR METAL PAN STAIR. METAL PAN STAIR IS A DELICATE DESIGN SUBMITTAL. METAL PAN STAIR PROVIDER IS TO PROVIDE SHOP DRAWINGS DETAILING STEEL MEMBER SIZES, SUPPORT REQUIREMENTS, DETAILS, AND OTHER CONDITIONS RELATED TO THE DESIGN OF THE STAIR. SEE SPECIFICATIONS.
- B PLAM 3 BASIS OF DESIGN IS FORMICA HARDTOP. SEE SPECIFICATIONS. PLAM 3 IS INSTALLED OF GYPSUM WALLBOARD. ALL JOINTS, END CONDITIONS (END OF WALL, TOP OF PANEL, BOTTOM OF PANEL), AND CORNERS UTILIZE MANUFACTURER'S STANDARD TRIM PIECES. PROVIDE BRUSHED ALUMINUM FINISH.
- C GLASS QUORRAL SYSTEM BASIS OF DESIGN IS CR. LAURENCE TAPER LOC DRY GLAZED RAILING SYSTEM W/ CONTINUOUS BASE RAIL ANCHORED TO STEEL PLATE, WELDED TO STEEL TUBE STRINGER. FOR HANDRAIL TO BE CONTINUOUS, GLASS PLANE MUST ALIGN WITH THE PLANE OF THE PLAM 3 WALL IN PLAN. THIS ALIGNMENT REQUIRES A CONTINUOUS STEEL PLATE WELDED TO THE STRINGER TO BRING THE RAILING SYSTEM INTO ALIGNMENT.
- D STAIR HANDRAIL IS A BRUSHED STAINLESS STEEL CUSTOM HANDRAIL, CONTINUOUS FROM THE PLAM 3 WALL TO THE GLASS RAILING SYSTEM. WHERE DISTANCE FROM WALL TO GLASS PROVIDE EXPOSED BLOCKING FOR MOUNTING. EXPOSED BLOCKING SHALL BE 3-INCH DIA. FINIT GRADE POPULAR PAINTED TO MATCH WALL, W/ CONCEALED FASTENERS.
- E PROVIDE VINYL TREADS AND RISERS, TYPICAL. PROVIDE MATCHING VINYL FINISHING.

**GMC**

1219 Wayne Street  
Columbia, SC 29201  
T: 803.766.1235  
gmcnetwork.com



ISSUE DATE	DATE
BID DOCUMENTS	10.24.19
DRAWN BY:	MJW
CHECKED BY:	JWV

MILLBROOK ELEMENTARY SCHOOL -  
ADDITION AND RENOVATIONS  
255 E PINE LOG RD., AIKEN, SC 29803

GMC # ACOL180004

ENLARGED PLAN DETAILS

A1.43