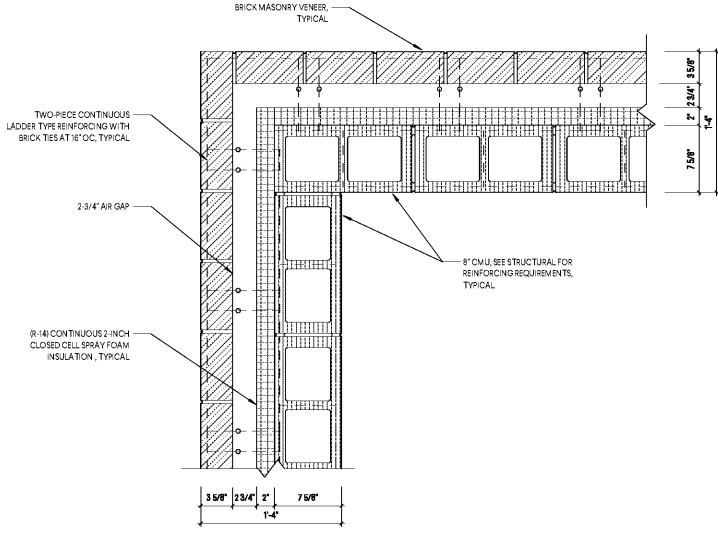


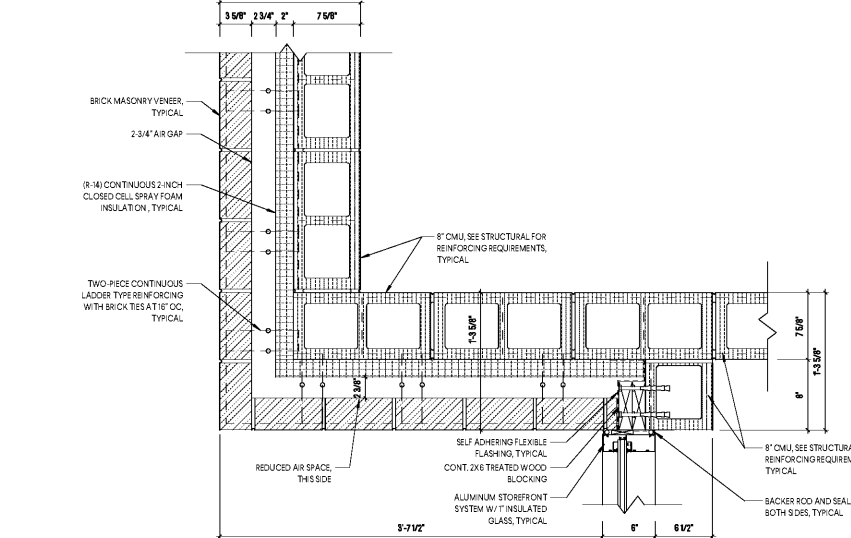
GENERAL NOTES

- A FIELD VERIFY ALL DIMENSIONS AND CONDITIONS. GENERAL CONTRACTOR TO BRING ANY DISCREPANCIES TO THE ARCHITECT'S ATTENTION IMMEDIATELY PRIOR TO PROCEEDING WITH WORK.
- B GENERAL CONTRACTOR TO PROTECT ALL EXISTING WORK TO REMAIN THROUGHOUT CONSTRUCTION.
- C PATCH AND REPAIR ALL EXISTING FINISHES AS REQUIRED, DUE TO DEMOLITION WORK.
- D REFERENCE STRUCTURAL, MECHANICAL, PLUMBING, FIRE PROTECTION AND ELECTRICAL DRAWINGS FOR ADDITIONAL RENOVATION INFORMATION.
- E REFERENCE STRUCTURAL DRAWINGS FOR MODIFICATIONS TO NEW OPENINGS AND NEW STRUCTURAL SUPPORT RESULTING FROM DEMOLITION.
- F AREAS 3 IS NOT INCLUDED IN THE SCOPE OF WORK. NO WORK IN THIS AREA.
- G REFERENCE SHEETS A10, A11, AND A12 FOR ENLARGED FINISH PLANS.

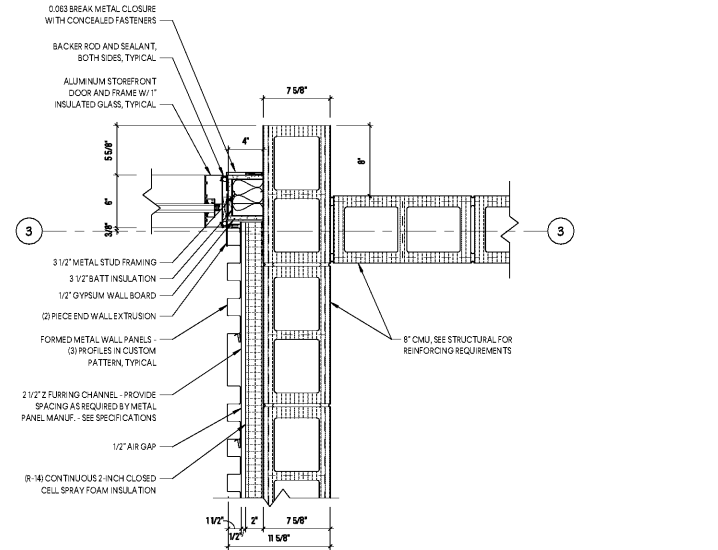
1 ENLARGED PLAN DETAIL
SCALE: 1 1/2" = 1'-0"



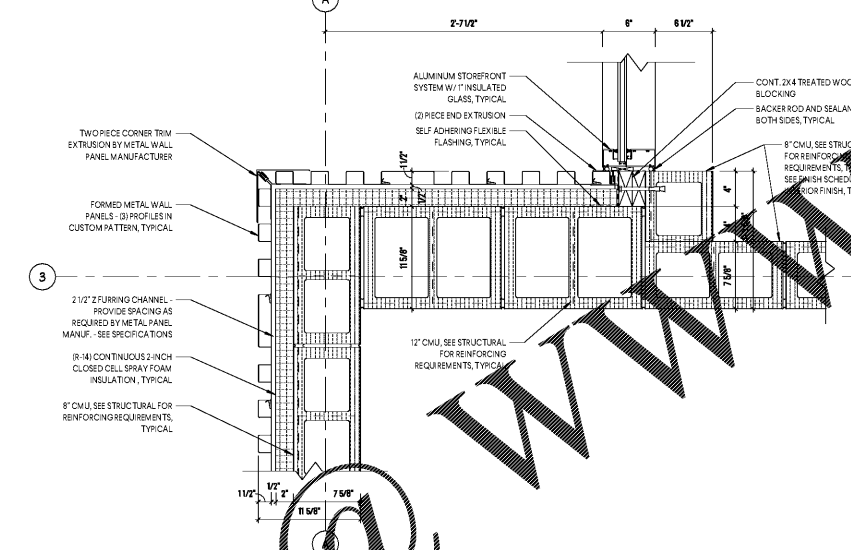
2 ENLARGED PLAN DETAIL
SCALE: 1 1/2" = 1'-0"



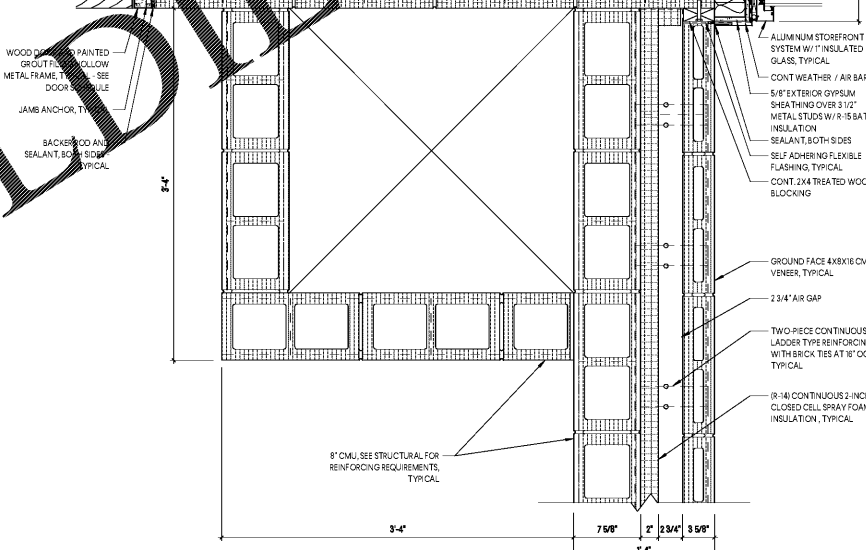
4 ENLARGED PLAN DETAIL
SCALE: 1 1/2" = 1'-0"



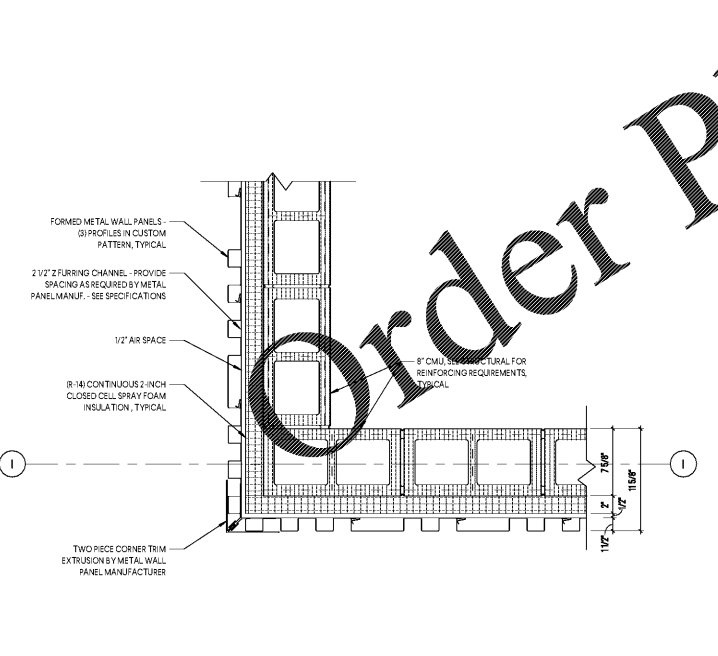
5 ENLARGED PLAN DETAIL
SCALE: 1 1/2" = 1'-0"



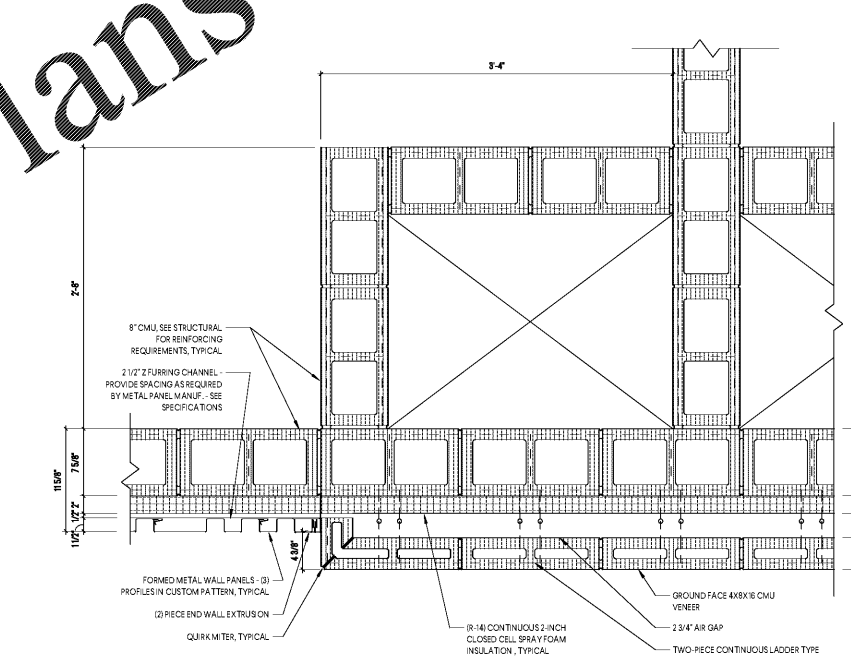
6 ENLARGED PLAN DETAIL
SCALE: 1 1/2" = 1'-0"



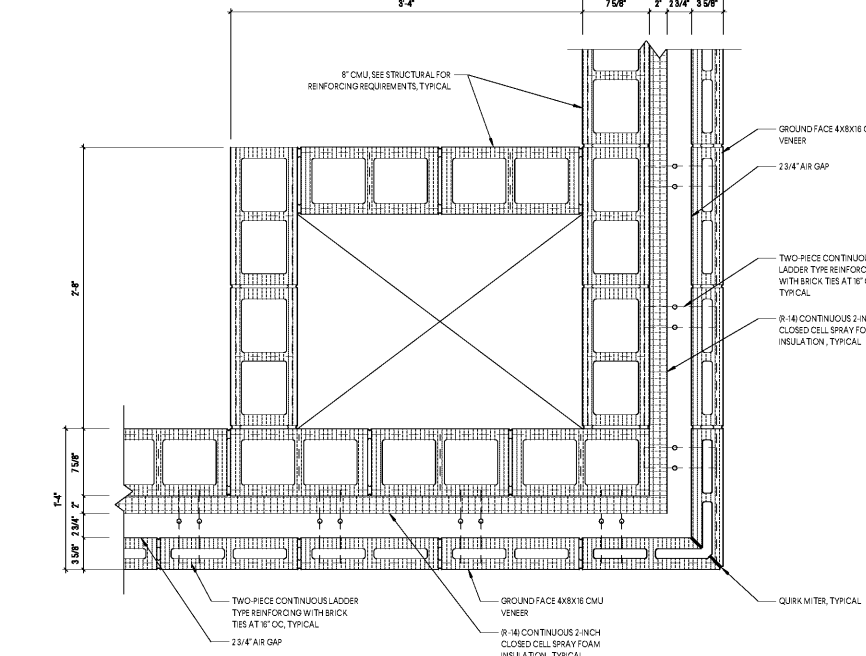
7 ENLARGED PLAN DETAIL
SCALE: 1 1/2" = 1'-0"



8 ENLARGED PLAN DETAIL
SCALE: 1 1/2" = 1'-0"



9 ENLARGED PLAN DETAIL
SCALE: 1 1/2" = 1'-0"



1219 Wayne Street
Columbia, SC 29201
T 803.766.1235
GMCNETWORK.COM



ISSUE DATE	DESCRIPTION
10.24.19	BID DOCUMENTS

MILLBROOK ELEMENTARY SCHOOL - ADDITION AND RENOVATIONS
255 E PINE LOG RD, AIKEN, SC 29803
GMC # ACOL180004

ENLARGED PLAN DETAILS
A1.41