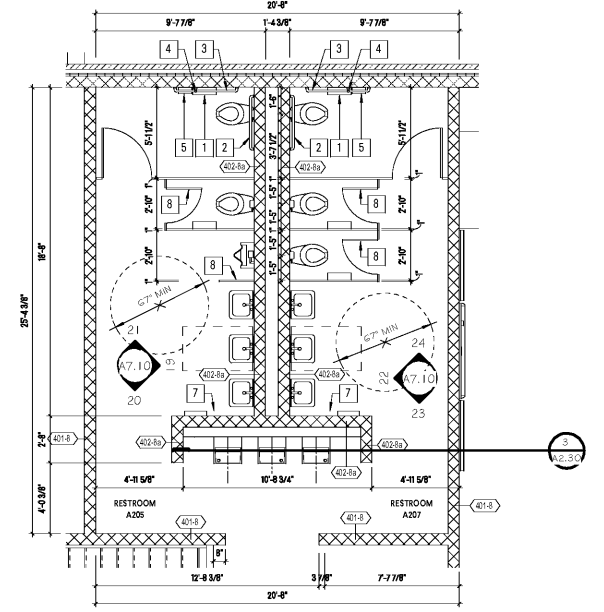
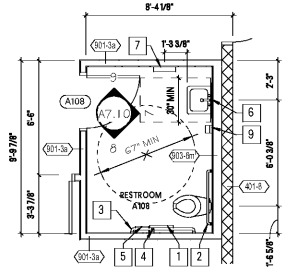


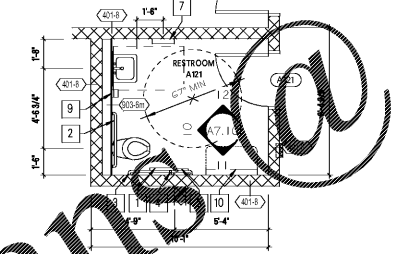
**1 ENLARGED RESTROOM PLAN - ROOMS 2113, 2114**  
SCALE: 1/4" = 1'-0"



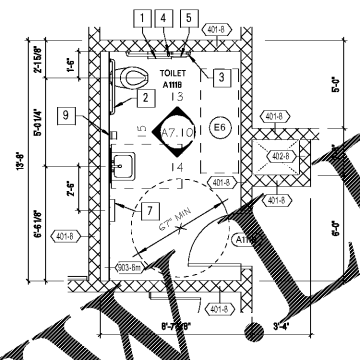
**4 ENLARGED RESTROOM PLAN - ROOMS 2204, 2206**  
SCALE: 1/4" = 1'-0"



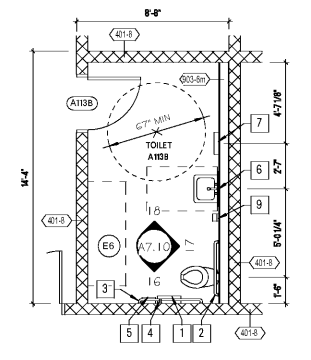
**2 ENLARGED RESTROOM PLAN - ROOM 2108**  
SCALE: 1/4" = 1'-0"



**5 ENLARGED RESTROOM PLAN - ROOM 2111**  
SCALE: 1/4" = 1'-0"



**3 ENLARGED RESTROOM PLAN - ROOM 2116A**  
SCALE: 1/4" = 1'-0"

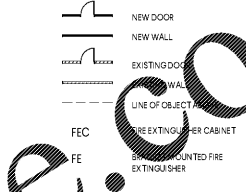


**6 ENLARGED RESTROOM PLAN - ROOM 2118A**  
SCALE: 1/4" = 1'-0"

**GENERAL NOTES - ENLARGED TOILET PLANS**

- A FIELD VERIFY ALL DIMENSIONS AND CONDITIONS. GENERAL CONTRACTOR TO BRING ANY DISCREPANCIES TO THE ARCHITECT'S ATTENTION IMMEDIATELY PRIOR TO PROCEEDING WITH WORK.
- B GENERAL CONTRACTOR TO PROTECT ALL EXISTING WORK TO REMAIN THROUGHOUT CONSTRUCTION.
- C PATCH AND REPAIR ALL EXISTING FINISHES, AS REQUIRED, DUE TO DEMOLITION WORK.
- D REFERENCE STRUCTURAL, MECHANICAL, PLUMBING, FIRE PROTECTION, AND ELECTRICAL DRAWINGS FOR ADDITIONAL RENOVATION INFORMATION.
- E ADA CLEARANCES ARE MINIMUM REQUIRED CLEAR DIMENSIONS. GENERAL CONTRACTOR SHALL NOTIFY THE ARCHITECT IMMEDIATELY OF ANY CONFLICTS.
- F FIELD VERIFY MOUNTING HEIGHT OF ALL TOILET ACCESSORIES WITH ARCHITECT PRIOR TO INSTALL.

**FLOOR PLAN LEGEND**

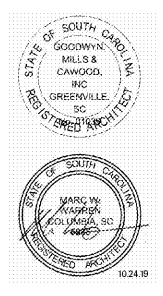


**EQUIPMENT KEY NOTE LEGEND**

Key Value	Keynote Text
E6	ELECTRICALLY OPERATED MOTORIZED CHANGING BENCH, 26" X 71". PROVIDE SUPPORT AS REQUIRED FOR WALL MOUNT INSTALLATION. SEE SPECIFICATION SECTION 117300.



1219 Wayne Street  
Columbia, SC 29201  
T 803.766.1235  
GMCNETWORK.COM

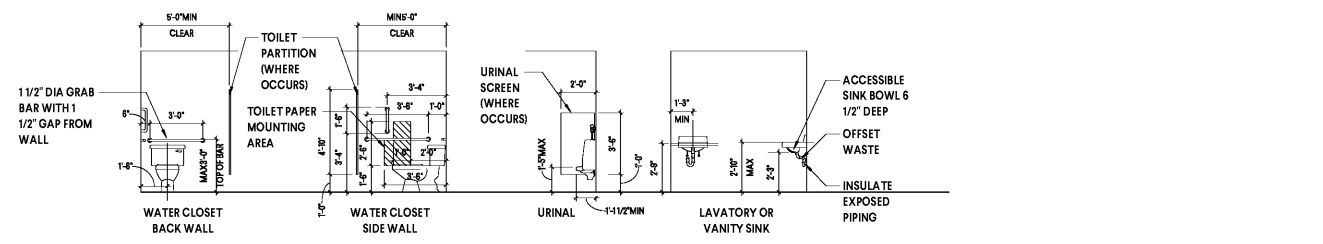
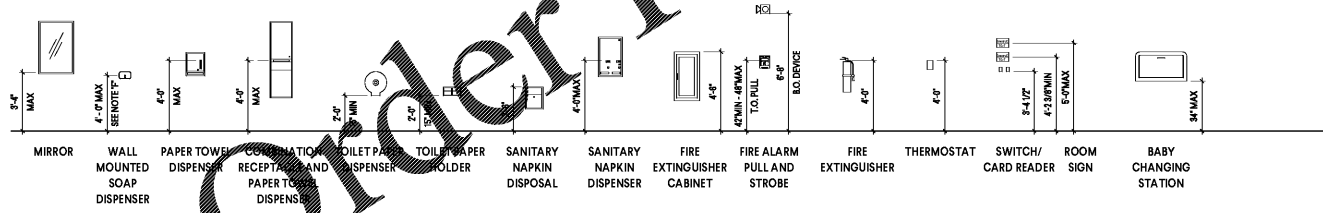


ISSUE DATE	DESCRIPTION
10.24.19	BID DOCUMENTS

MILLBROOK ELEMENTARY  
SCHOOL - ADDITION AND  
RENOVATIONS  
255 E PINE LOG RD, AIKEN, SC 29803  
GMC # ACOL180004

**ENLARGED TOILET PLANS**

**A1.30**



**TOILET ACCESSORIES LEGEND**

- 1 TOILET PAPER DISPENSER
- 2 36" GRAB BAR
- 3 42" GRAB BAR
- 4 18" GRAB BAR
- 5 SANITARY NAPKIN DISPOSAL
- 6 24" W x 36" H FRAMED MIRROR
- 7 PAPER TOWEL DISPENSER / TRASH RECP.
- 8 NEW TOILET PARTITIONS
- 9 SOAP DISPENSER
- 10 ADA BABY CHANGING STATION