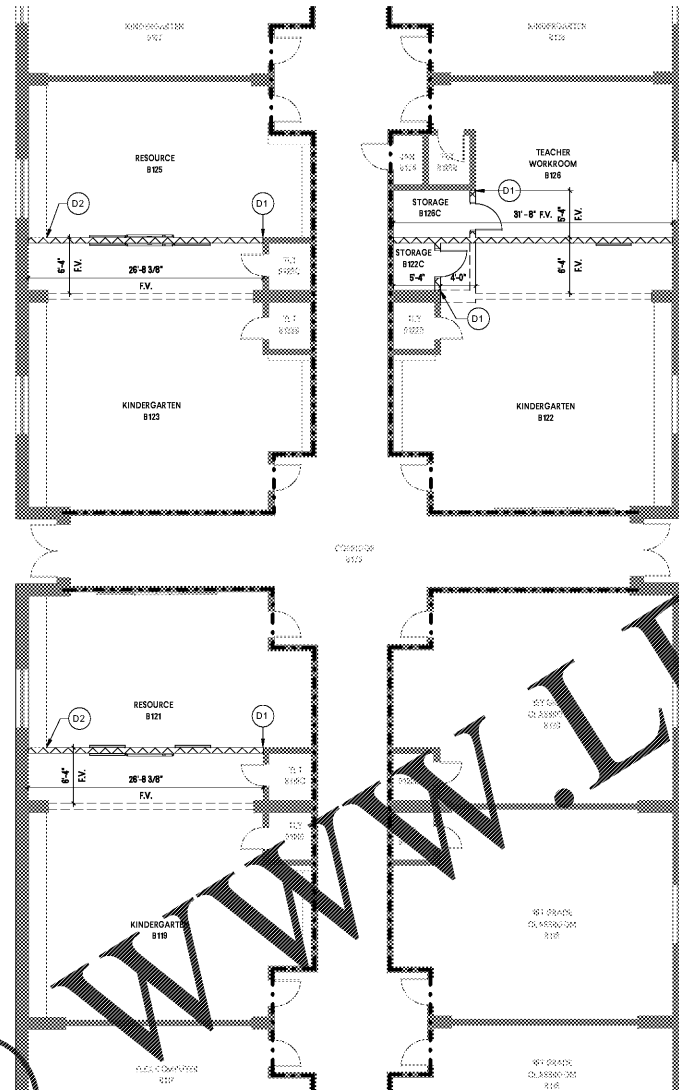


1 FIRST LEVEL - DIMENSION PLAN - AREA 1-1
SCALE: 1/8"=1'-0"



2 FIRST LEVEL - DIMENSION PLAN - AREA 1-2
SCALE: 1/8"=1'-0"

GENERAL NOTES

- A. SEE SPECIFICATIONS FOR METAL PAN STAIR. METAL PAN STAIR IS A DELEGATED DESIGN SUBMITTAL. METAL PAN STAIR PROVIDER IS TO PROVIDE SHOP DRAWINGS DETAILING STEEL MEMBER SIZES, SUPPORT REQUIREMENTS, DETAILS, AND OTHER CONDITIONS RELATED TO THE DESIGN OF THE STAIR. SEE SPECIFICATIONS.
- B. PLAN 3 BASIS OF DESIGN IS FORMICA HARDTOP. SEE SPECIFICATIONS. PLAN 3 IS INSTALLED ON GYPSUM WALLBOARD. ALL JOINTS END CONDITIONS (END OF WALL, TOP OF PANEL, BOTTOM OF PANEL, AND CORNERS) UTILIZE MANUFACTURER'S STANDARD TRIM PIECES. PROVIDE BRUSHED ALUMINUM FINISH.
- C. GLASS GUARDRAIL SYSTEM BASIS OF DESIGN IS C.R. LAURENCE TAPER LOCK DRY GLAZED RAILING SYSTEM W/ CONTINUOUS BASE RAIL ANCHORED TO STEEL PLATE WELDED TO STEEL TUBE STRINGER. FOR HANDRAIL, TO BE CONTINUOUS, GLASS PLANE MUST ALIGN WITH THE PLANE OF THE PLAN 3 WALL. W.P.A.N. THIS ALIGNMENT REQUIRES A CONTINUOUS STEEL PLATE WELDED TO THE STRINGER TO BIND THE RAILING SYSTEM INTO ALIGNMENT.
- D. STAIR HANDRAIL IS A BRUSHED STAINLESS STEEL CUSTOM HANDRAIL CONTINUOUS FROM THE PLAN 3 WALL TO THE GLASS RAILING SYSTEM. WHERE DISTANCE FROM WALL VARIES, PROVIDE EXPOSED BLOCKING FOR MOUNTING. EXPOSED BLOCKING SHALL BE 3-INCH DIAM PAINT GRADE POPULAR, PAINTED TO MATCH WALL, W/ CONCEALED FASTENERS.
- E. PROVIDE VINYL TREADS AND RISERS, TYPICAL. PROVIDE MATCHING VINYL TRIM.

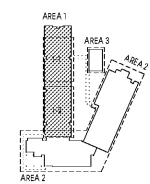
FLOOR PLAN LEGEND

- NEW WALL
- EXISTING WALL
- EXISTING DOOR
- EXISTING WALL
- OBJECT ABOVE
- FIRE EXTINGUISHER CABINET
- BRACKET MOUNTED FIRE EXTINGUISHER
- 1-HR FIRE BARRIER / FIRE PARTITION
- EXISTING RATED CONSTRUCTION
- 3-HR FIRE WALL
- EXISTING RATED CONSTRUCTION

DIMENSION PLAN KEYNOTE LEGEND

Key Value	Keynote Text
D1	ALIGN NEW WALL W/ EXISTING WALL CORNER
D2	FIELD COORDINATE LOCATION OF NEW WALL W/ EXISTING MILLWORK DEMOLITION. ALIGN NEW WALL LOCATION PLAN NORTH OF EXISTING LOWER CABINETS. F.V.

KEY PLAN

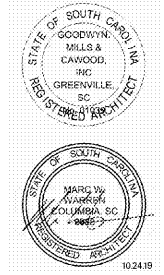


Order Plans @

WWW.LDILine.com



1219 Wayne Street
Columbia, SC 29201
T: 803.766.1235
GMCNETWORK.COM



ISSUE DATE	BID DOCUMENTS
10.24.19	

MILLBROOK ELEMENTARY SCHOOL - ADDITION AND RENOVATIONS
255 E PINE LOG RD., AIKEN, SC 29803
DRAWN BY: JLV/JW
CHECKED BY: JLV/JW

FIRST LEVEL - DIMENSION PLAN - AREA 1
A1.11D
GMC # ACOL180004