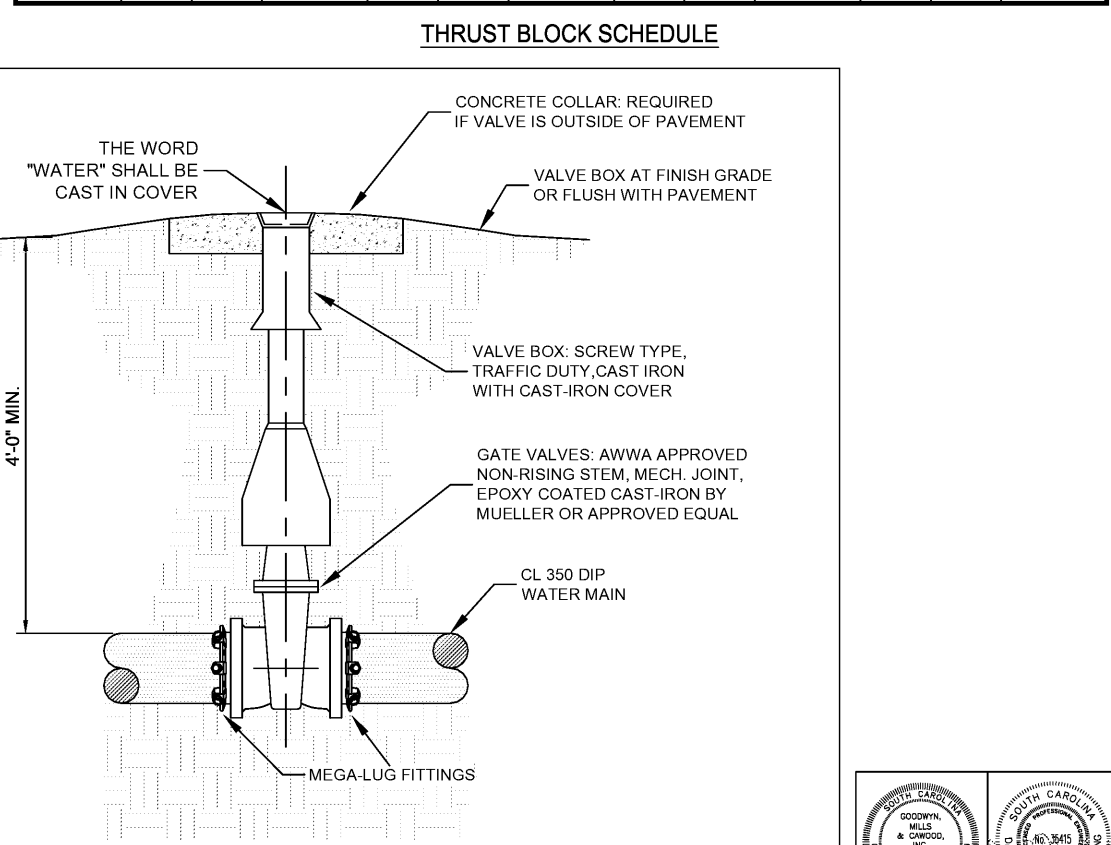
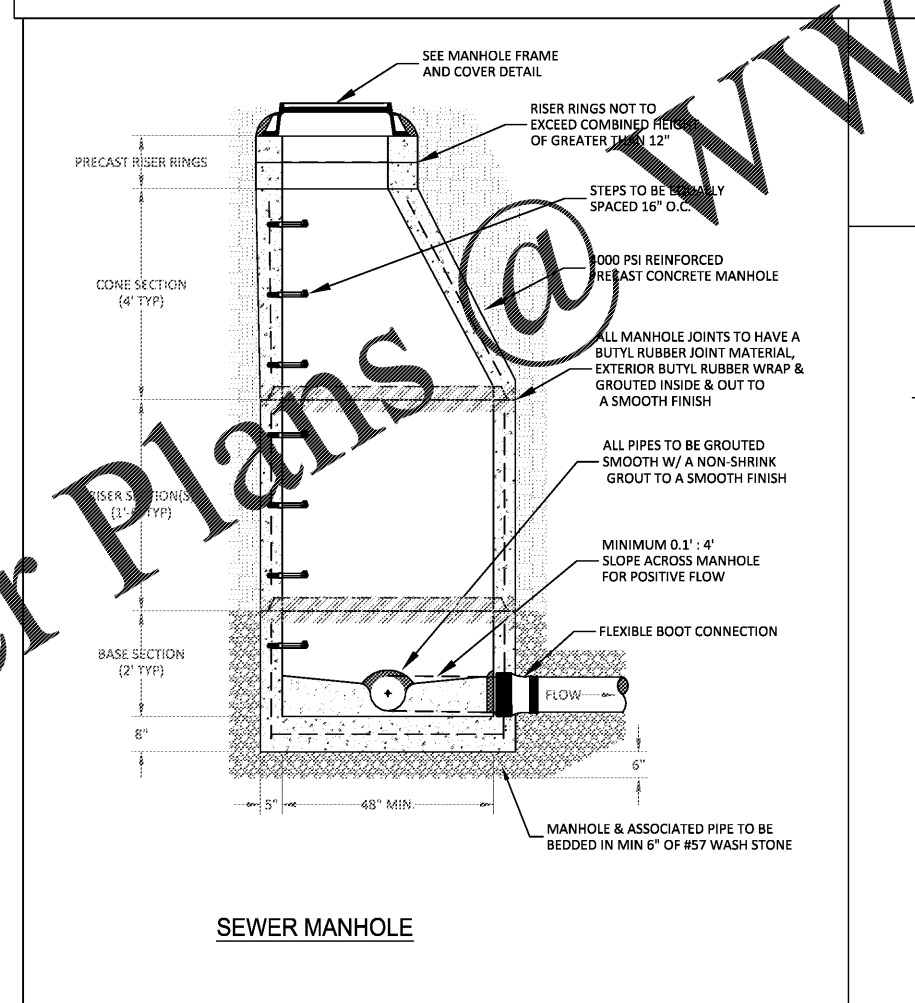


**THRUST BLOCKS (MIN. DIMENSIONS IN FEET)**

PIPE SIZE (IN.)	90° BENDS			45° BENDS			22 1/2° BENDS			TEE		
	B	D	REINF. (EA. WAY)	B	D	REINF. (EA. WAY)	B	D	REINF. (EA. WAY)	B	D	REINF. (EA. WAY)
2	1.0	0.7	-	1.0	0.7	-	1.0	0.7	-	1.0	0.7	-
3	1.0	0.7	-	1.0	0.7	-	1.0	0.7	-	1.0	0.7	-
4	1.0	0.7	-	1.0	0.7	-	1.0	0.7	-	1.2	0.7	-
6	1.4	0.7	-	1.4	0.7	-	1.0	0.7	-	1.6	0.7	-
8	1.8	0.8	-	1.4	0.7	-	1.0	0.7	-	2.2	1.0	-
10	2.3	1.0	-	1.7	0.8	-	1.2	0.7	-	2.7	1.0	-
12	2.7	1.0	-	2.0	0.8	-	1.4	0.7	-	3.2	1.0	-
14	3.2	1.0	4-#5'S	2.4	1.0	3-#5'S	1.7	0.7	-	3.8	1.0	5-#5'S
16	3.6	1.0	5-#5'S	2.7	1.0	3-#5'S	1.9	0.8	2-#5'S	4.3	1.2	5-#5'S
20	4.1	1.2	5-#5'S	3.0	1.0	4-#5'S	2.2	1.0	3-#5'S	4.9	1.2	6-#5'S
24	4.5	1.2	5-#5'S	3.4	1.0	4-#5'S	2.4	1.0	3-#5'S	5.4	1.2	6-#5'S
28	5.5	1.2	6-#5'S	4.0	1.0	5-#5'S	2.9	1.0	3-#5'S	6.5	1.5	8-#5'S
30	6.8	1.5	8-#5'S	5.0	1.2	6-#5'S	3.6	1.0	5-#5'S	8.1	1.7	9-#5'S
36	8.2	1.7	9-#5'S	6.0	1.3	7-#5'S	4.3	1.2	5-#5'S	9.7	1.8	10-#5'S
42	9.6	1.8	10-#5'S	7.0	1.5	8-#5'S	5.0	1.2	6-#5'S	11.3	2.0	12-#5'S



DRAWING FILE W:\Projects\...\_and Development\3279\CGR190013\_Aiken Millbrook Elementary School\3279\CGR190013\_Detailed.dwg  
PLOT DATE: 06/25/2019 10:52:51 AM

Order Plans @ WWW.IDIPLANS.COM



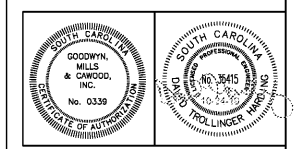
617 East McBee Ave  
Suite 200  
Greenville, SC 29601  
T 864.527.0480  
GMCNETWORK.COM

**ISSUE DATE**

ISSUE DATE	DESCRIPTION
BID DOCUMENTS 10.24.19	

DRAWN BY: JMG  
CHECKED BY: DHT

MILLBROOK ELEMENTARY  
SCHOOL - ADDITIONS AND  
RENOVATIONS  
255 E PINE LOG RD, AIKEN, SC 29803  
GMC # CGR190013



**DETAILS**

**C-607**