

Order Plans @

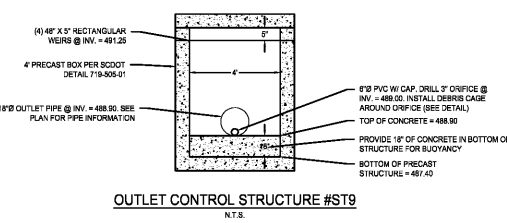
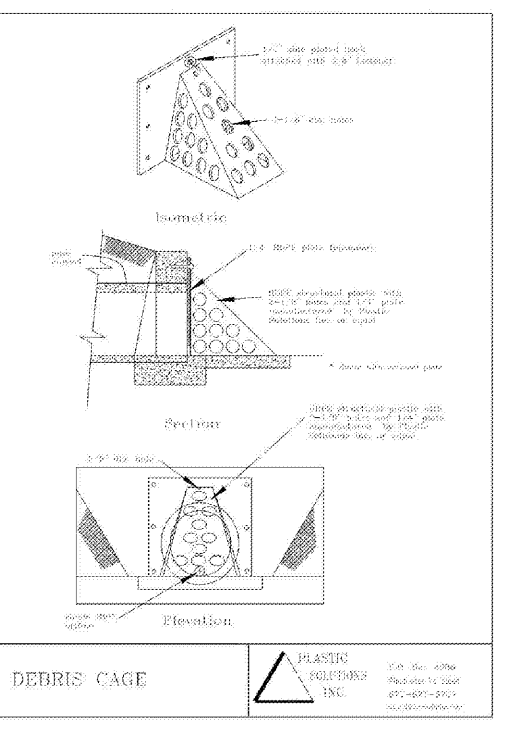
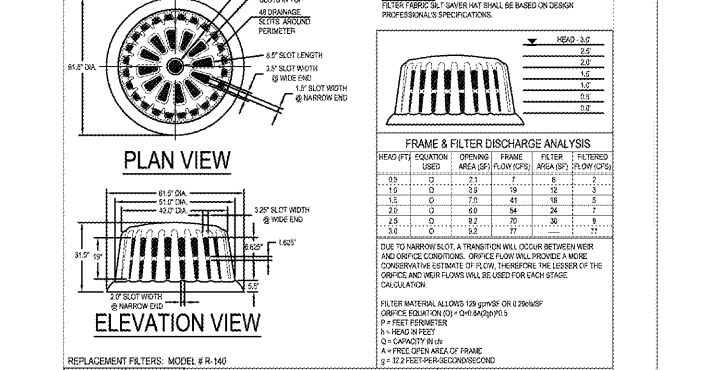
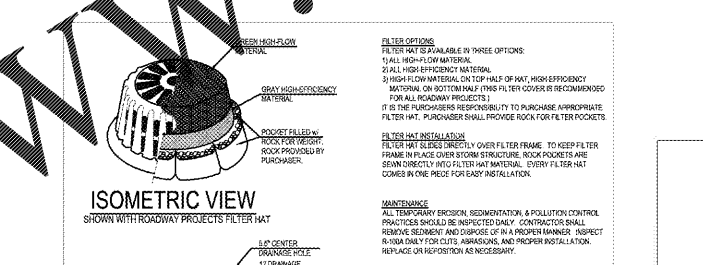
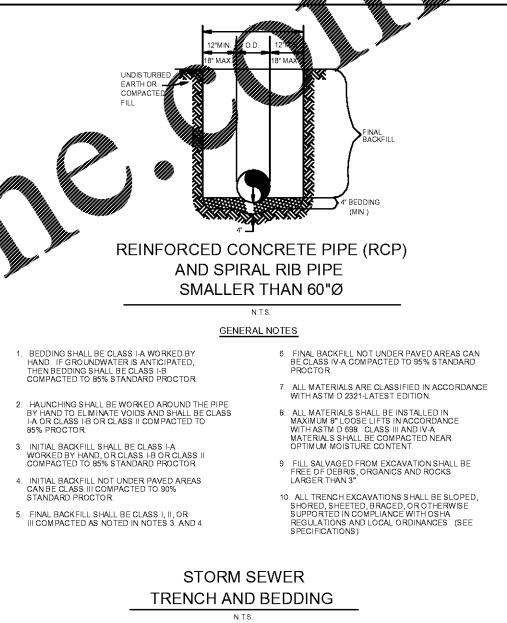
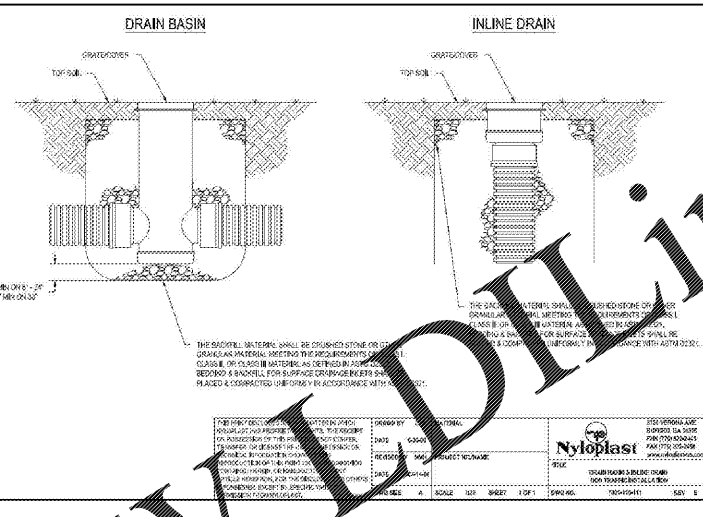
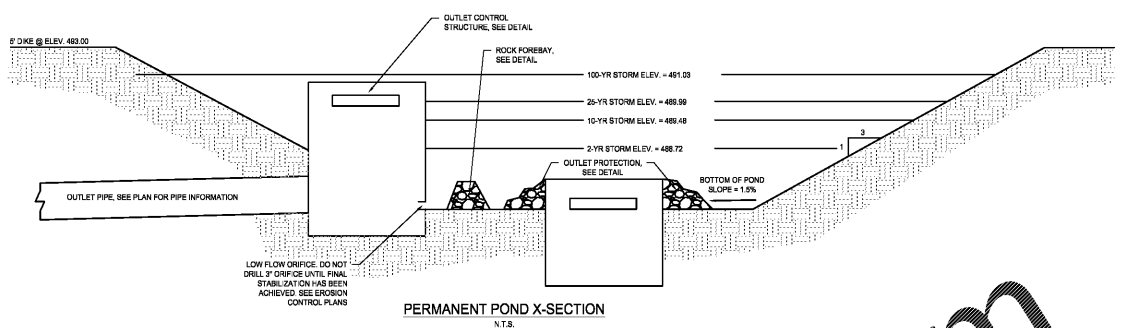
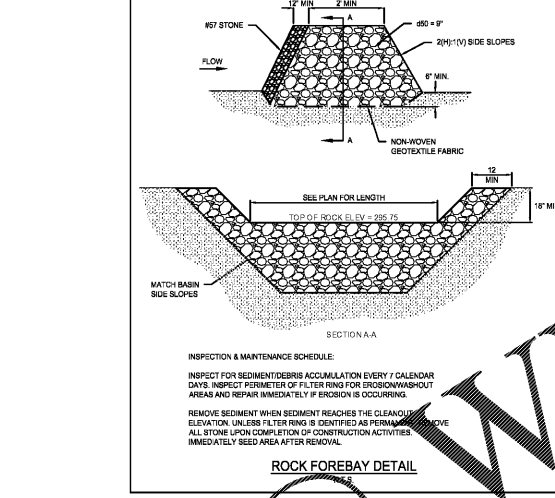


TABLE I
HEADWALL DIMENSIONS FOR CPP & METAL PIPE *

INSIDE DIA OF PIPE	W1	W2	H1	H2	D	E	WT	SQ FT IN AREA
18"	3'-2"	4'-10"	1'-3"	3'-2"	1'-3"	1'-9"	1,550	7.34
24"	3'-6"	5'-1"	1'-3"	3'-6"	1'-6"	2'-3"	2,100	9.80
30"	4'-0"	5'-7"	1'-3"	4'-0"	1'-9"	2'-9"	2,850	13.50
36"	4'-6"	6'-4"	1'-3"	4'-6"	2'-2"	3'-3"	3,700	17.66
42"	5'-0"	7'-1"	1'-3"	5'-0"	2'-6"	3'-9"	4,650	22.00

* USE NEXT LARGER SIZE FOR CONCRETE PIPE



HP STORM TRENCH INSTALLATION DETAIL

TABLE I: REQUIREMENTS FOR ROADWAY TRENCH SLOPES

ROAD CLASS	MIN. SLOPE (%)	MAX. SLOPE (%)
Interstate	0.5	1.5
Major Arterial	0.5	1.5
Minor Arterial	0.5	1.5
Collector	0.5	1.5
Local	0.5	1.5

TABLE II: REQUIREMENTS FOR ROADWAY TRENCH SLOPES (VEHICLE EXITS) CONDITIONS

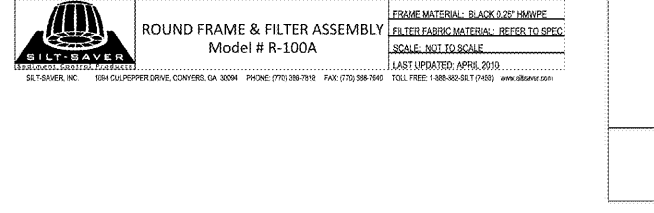
ROAD CLASS	MIN. SLOPE (%)	MAX. SLOPE (%)
Interstate	0.5	1.5
Major Arterial	0.5	1.5
Minor Arterial	0.5	1.5
Collector	0.5	1.5
Local	0.5	1.5

TABLE III: REQUIREMENTS FOR ROADWAY TRENCH SLOPES (VEHICLE EXITS) CONDITIONS

ROAD CLASS	MIN. SLOPE (%)	MAX. SLOPE (%)
Interstate	0.5	1.5
Major Arterial	0.5	1.5
Minor Arterial	0.5	1.5
Collector	0.5	1.5
Local	0.5	1.5

TABLE IV: REQUIREMENTS FOR ROADWAY TRENCH SLOPES (VEHICLE EXITS) CONDITIONS

ROAD CLASS	MIN. SLOPE (%)	MAX. SLOPE (%)
Interstate	0.5	1.5
Major Arterial	0.5	1.5
Minor Arterial	0.5	1.5
Collector	0.5	1.5
Local	0.5	1.5



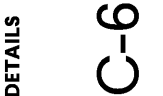
617 East McBee Ave
Suite 200
Greenville, SC 29601
T 864.527.0480
GMCNETWORK.COM

ISSUE DATE

BID DOCUMENTS 10.24.19

DRAWN BY: JMG
CHECKED BY: DHT

MILLBROOK ELEMENTARY
SCHOOL - ADDITIONS AND
RENOVATIONS
255 E PINE LOG RD., AIKEN, SC 29803
GMC # CGRE190013



C-603