

PARTITION TYPE REFERENCE

CORE / STRUCTURAL MATERIAL (SPECIFICATION SECTION) XXX-Xxx

FIRE RATING / SPECIALTY

NOMINAL SIZE OF CORE MATERIAL

WALL MODIFIERS NUMBERING SEQUENCE

PARTITION TYPE CODING / LEGEND

CORE / STRUCTURAL MATERIAL (SPECIFICATION SECTION) NUMBERING SEQUENCE

0-9 SEQUENTIAL NUMBERING

CORE MATERIAL SIZE (NOMINAL SIZE)

FIRE RATING / SPECIALTY

0 NOT RATED

1 1/2-HOUR RATED

2 1-HOUR RATED

3 3-HOUR RATED

4 4-HOUR RATED

5 SMOKE PARTITION

6 ACoustic / SOUND RATED PARTITION

1 3/4" METAL STUD / CMU CONCRETE

2 2 1/2" METAL STUD / CMU CONCRETE

3 3" METAL STUD / CMU CONCRETE

4 4" METAL STUD / CMU CONCRETE

5 6" METAL STUD / CMU CONCRETE

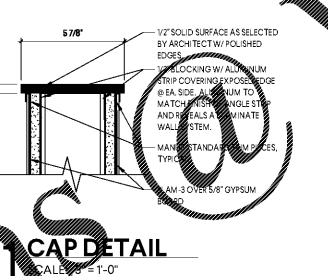
6 8" METAL STUD / CMU CONCRETE

7 12" METAL STUD / CMU CONCRETE

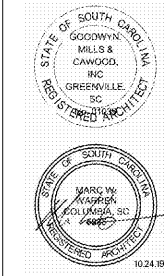
8 MOISTURE RESISTANT GYPSUM BOARD

9 ACoustic / SOUND RATED PARTITION

- PARTITION TYPE CODING / LEGEND**
- SECTION TYPE DETAILS APPLY UNLESS INDICATED OTHERWISE ON WALL SECTIONS, SECTION DETAILS AND PLAN DETAILS.
- (B) PARTITION WALLS THAT ARE PARALLEL, WITH COLUMN LINES SHALL BE CENTERED ON COLUMN LINES UNLESS NOTED OTHERWISE.
- ANY WALLS SHOWN AS MASONRY ON THE PLANS BUT NOT TAGGED AS PARTITION OR DETAILED ELSEWHERE IN THE DRAWINGS SHALL BE ASSUMED TO BE PARTITION TYPE 401-8. CONFIRM WITH ARCHITECT PRIOR TO CONSTRUCTION.
- (D) PROVIDE DRAFT STOP AT TOP OF WALL ASSEMBLY THAT DO NOT CONTINUE TIGHT TO STRUCTURE INCLUDING PLUMBING CAVITY.
- (E) CONTROL JOINTS:
- CONTROL JOINTS IN CMU / C.J. SHALL BE AS SHOWN OR 40" O.C. MAX. IF NOT SHOWN GYPSUM BOARD / METAL STUDS (C.J.) SHALL BE AS SHOWN OR 25" O.C. MAX. IF NOT SHOWN.
- (F) GENERAL CONTRACTOR OR BUILDING FINISH CONTRACTOR SHALL BE RESPONSIBLE TO COORDINATE ALL OPENINGS AND HOLES INCLUDING THOSE REQUIRED FOR DUCTWORK AND LARGES SYSTEM PIPING, CONDUIT AND CABLE TRAY IN WALLS INCLUDING SECTIONS, SIZE, LOCATION, AND DETAIL INFORMATION AS PART OF COORDINATION DRAWINGS.
- (G) LARGE HOLES FOR DUCTWORK, LARGE GROUPS OF PIPING OR CONDUIT, AND CABLE TRAY SHALL BE FORMED AS MASONRY WALLS ARE CONSTRUCTED AND SHALL INCLUDE UNTEL OVERHEAD AND REINFORCING ON ALL SIDES AS SHOWN ON THE STRUCTURAL DRAWINGS. HOLES FOR DUCTWORK MAY NOT BE CUT AFTER WALLS ARE CONSTRUCTED. LARGE GROUPS OF PIPING OR CONDUIT SHALL BE INCLUDED ON COORDINATION DRAWINGS AND LOCATIONS SHALL BE APPROVED BY THE ARCHITECT AND STRUCTURAL.
- (H) ALL PIPING AND CONDUIT PENETRATIONS THROUGH CMU WALLS SHALL BE SEALED. HOLES SHALL BE NO GREATER THAN 7" OVER THE PIPE OR CONDUIT SIZE WHERE PENETRATIONS ARE EXPOSED TO VIEW. SCUTCHEON PLATE SHALL BE PROVIDED BY SUB-CONTRACTOR OR GENERAL CONTRACTOR. PLATE SHALL BE PAINTABLE AND PAINTED TO MATCH ADJACENT WALL.
- (I) SEE LISTED UL ASSEMBLIES OF ALL BUILDING SYSTEMS WHERE APPLICABLE. ALL PENETRATIONS THROUGH RATED WALL AND FLOOR ASSEMBLIES MUST COMPLY WITH UL DESIGNS FOR PENETRATIONS.
- (J) ALL FIRE RATED WALLS TO RECEIVE STENCILED TEXT OR CONTINUOUS PAINTED BAND ABOVE CEILING AS FOLLOWS: 7" HIGH STENCILED TEXT READING "X-HOUR FIRE AND SMOKE BARRIER - PROTECT ALL OPENINGS" TO BE PAINTED (RED) ON ALL FIRE RATED WALL ASSEMBLIES ABOVE CEILING WHERE SUPERSEDED CEILING OCCURS. TEXT IS TO BE PAINTED ON BOTH SIDES OF EACH FIRE WALL, 40" O.C. WITH 1" WIDE LINE PAINTED (RED) BETWEEN TEXT.
- (K) SEE LIFE SAFETY PLANS FOR LOCATION AND RATING OF ALL FIRE RATED WALLS.
- (L) UTILIZE TYPE "X" GYPSUM BOARD AT ALL RATED WALLS TO COMPLY WITH UL TEST STANDARDS.
- (M) AT ALL JOINTS AT TOP OF ALL FIRE RATED WALLS AND PARTITIONS AND AT CONTROL JOINTS, PROVIDE COMPLETE UL LISTED FIRE RESISTIVE JOINT SYSTEM TO MATCH FIRE RESISTANCE OF THE WALL ASSEMBLY AND THAT ARE COMPATIBLE WITH ADJACENT SUBSTRATES. SUBMIT COMPLETE JOINT SYSTEM PRODUCT INFORMATION FOR ALL CONDITIONS FOR THE ARCHITECT'S REVIEW.
- (N) AT ALL PENETRATIONS AT RATED WALLS AND FLOOR / CEILING ASSEMBLIES, PROVIDE UL LISTED FIRE RESISTIVE SEALANT / FIRE STOP SYSTEM TO MATCH THE FIRE RESISTANCE OF WALL AND FLOOR / CEILING ASSEMBLY. SYSTEM SHALL BE COMPATIBLE WITH ADJACENT SUBSTRATES. SUBMIT PENETRATION ASSEMBLY INFORMATION AND PRODUCT INFORMATION FOR ALL CONDITIONS FOR THE ARCHITECT'S REVIEW.
- (O) AT ALL WALLS NOTED TO EXTEND TO DECK, ALL PENETRATIONS SHALL BE SEALED INCLUDING CONDUIT, PIPING, DUCTWORK, ETC) WHERE JOISTS PENETRATE WALLS EXTENDING TO DECK, GYPSUM BOARD SHALL BE INFILLED AROUND JOISTS AND GAPS FILLED WITH INSULATION.
- (P) SEE INTERIOR ELEVATIONS AND DETAILS FOR REVEALS IN WALLS AND MAINTAIN ALL WALL RATINGS. ADD ADDITIONAL LAYER OF GYPSUM BOARD TO MAINTAIN RATING.
- (Q) IN LIEU OF 5/8" GYPSUM BOARD, USE THE FOLLOWING MATERIALS FOR THE LISTED CONDITIONS:
- 5/8" MOISTURE RESISTANT GYPSUM BOARD
 - WITHIN 2 FEET HORIZONTALLY AND 4 FEET VERTICALLY OF FLOOR SINKS.
 - AT TOILET ROOM SIDINGS OF WALLS.
 - IN ALL JANETOR COSETS.
 - 5/8" CEMENT BACKER BOARD (PARTITION TYPE IS NOT FIRE RATED)
 - AT WALLS SCHEDULED TO RECEIVE A PORCELAIN TILE FINISH.



1219 Wayne Street
Columbia, SC 29201
T 803.766.1235
GMCNETWORK.COM



ISSUE DATE

BID DOCUMENTS 10.24.19

DRAWN BY: JLV/JV

CHECKED BY: JLV/JV

MILLBROOK ELEMENTARY
SCHOOL - ADDITION AND
RENOVATIONS
255 E PINE LOG RD, AIKEN, SC 29803
GMC # ACOL180004

PARTITION TYPES

G3.00