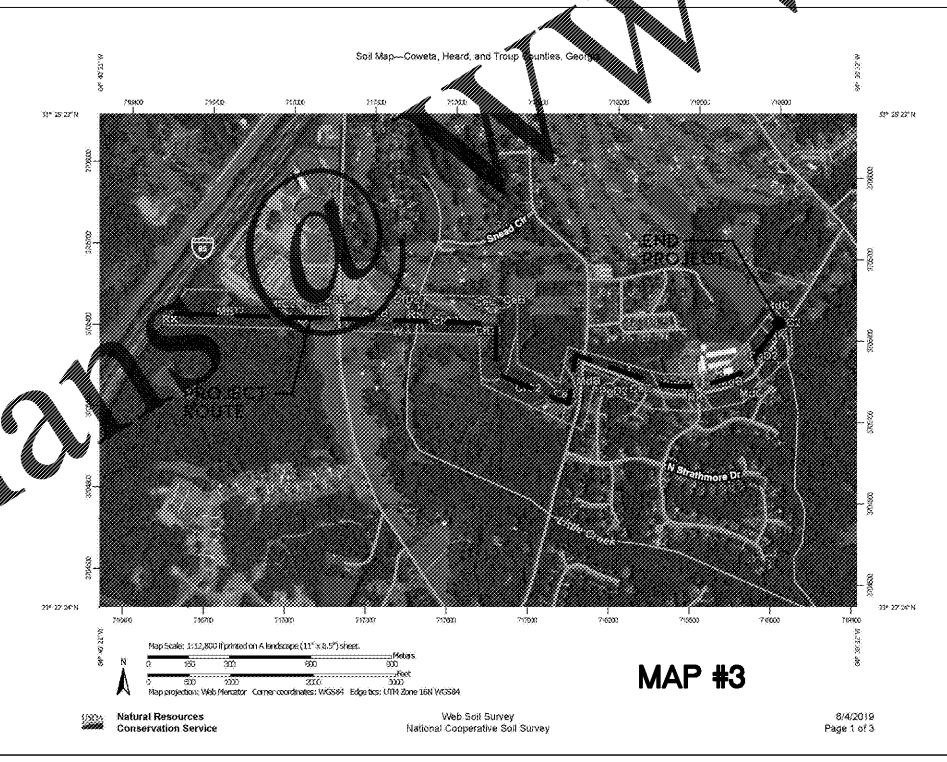
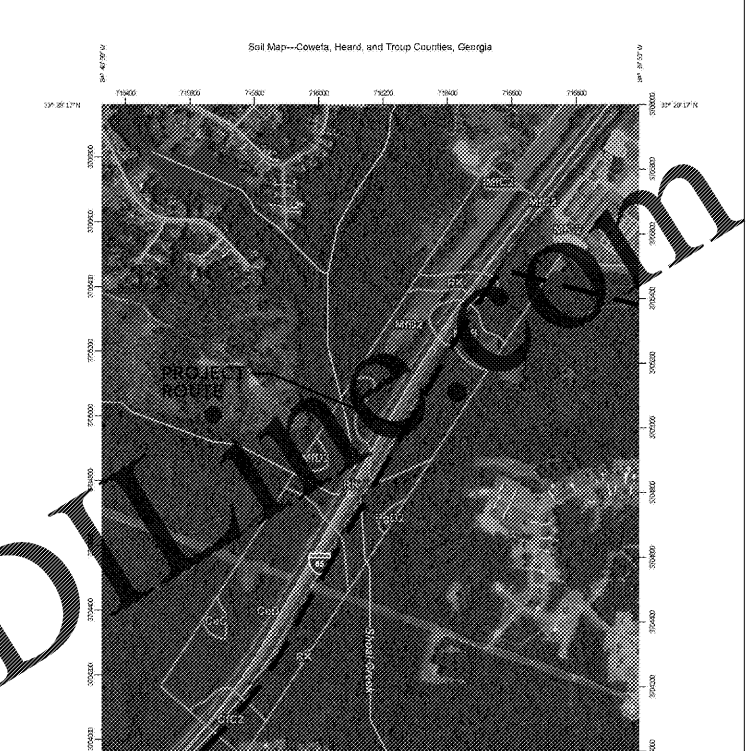
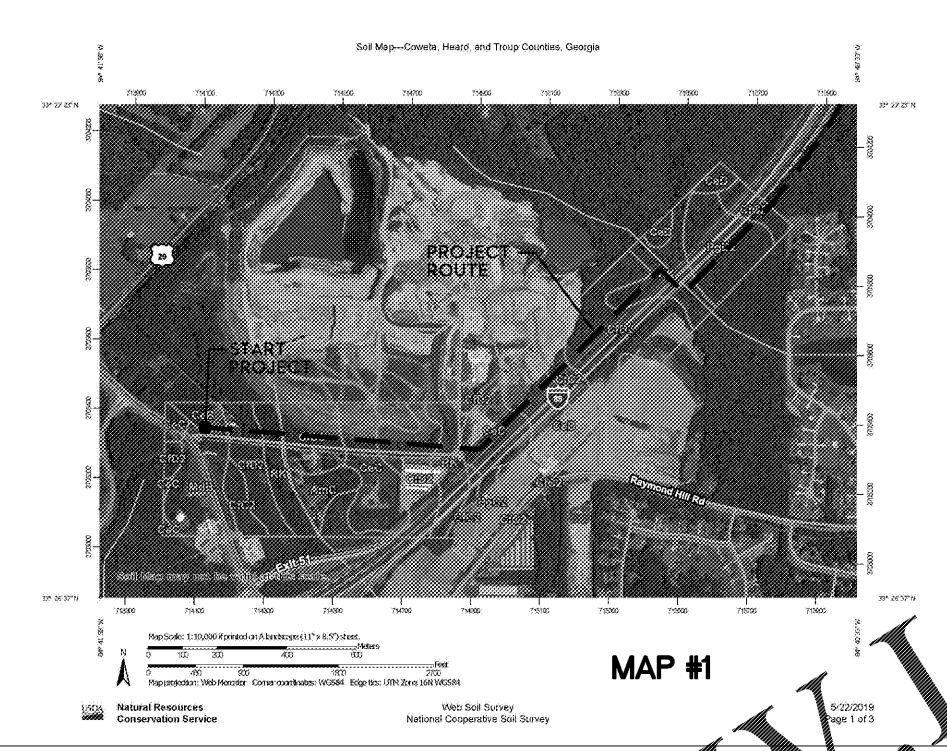


Coweta County, Georgia																	
Map unit symbol and soil name	Pct. of map unit	Hydrologic group	Depth	USDA texture	Classification	Pct. Fragments					Percentage passing sieve		Liquid limit	Plasticity index			
						10-100	2-10	1-2	0-0.25	0-0.075	4	10	40	200			
						μm	mm	mm	mm	mm	μm	μm	μm	μm	%		
A10-Aging sandy loam, 2 to 6 percent slopes																	
Appling	100	B	0-8	Sandy loam	SC, SM, SL	A-4	3	0	0	0	99.97	90.37	58.74	35.33	16-25	34	2-8-13
Sandy clay loam, sandy loam	15-40																



6120 Powers Ferry Road NW, Suite 350
Atlanta, GA 30339
T 770.952.2481
GMCNETWORK.COM

ISSUE DATE

PRELIMINARY 08.15.2019
75% SUBMITTAL 10.01.2019
BID READY 10.18.2019

DRAWN BY:

CHECKED BY:

NORTHGATE HIGH SCHOOL
SANITARY SEWER
COWETA COUNTY WATER AND
SEWERAGE AUTHORITY

CATL190025



SOIL MAPS

C.45
Sheet of

DRAWING FILE A:\Projects\Coweta\CAT_190025 - Northgate High School Sanitary Sewer10 DWG\CAT_190025-SOILS.dwg
PLOTTED OCT 17, 2019 11:43am

Order Plans @ WWW.LDILLIBO.COM