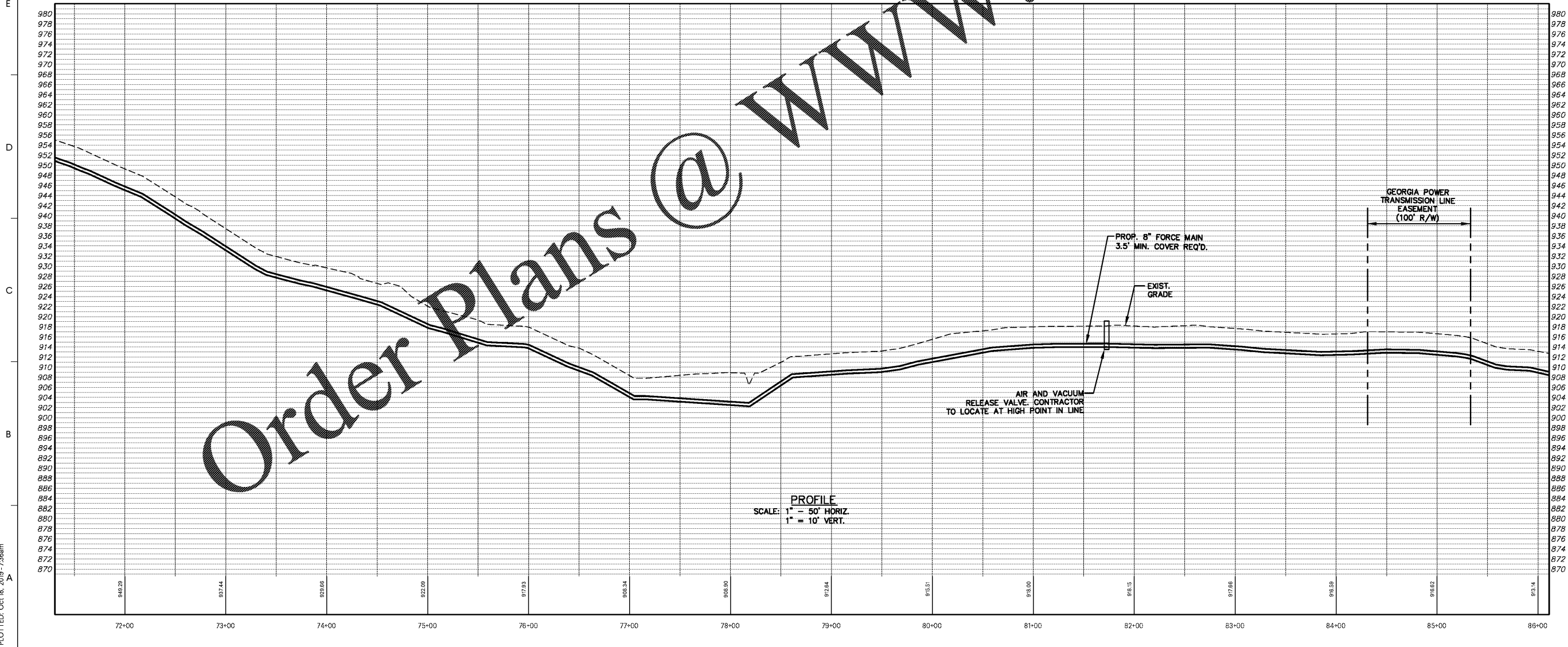
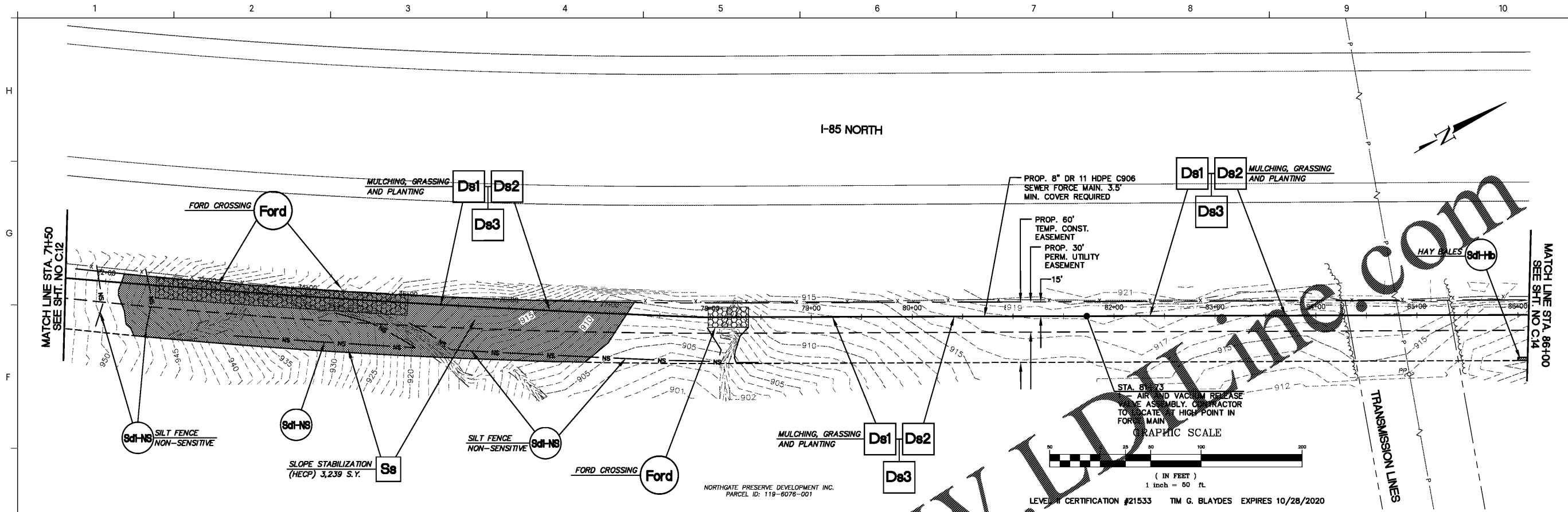


DRAWING FILE: G:\Projects\Coweta\CATL190025 - Northgate High School Sanitary Sewer\0 DWG\CATL-190025-BASE.dwg
 PLOTTED: Oct 18, 2019 - 7:36am



PROFILE
 SCALE: 1" = 50' HORIZ.
 1" = 10' VERT.

GMC

6120 Powers Ferry Road NW, Suite 350
 Atlanta, GA 30339
 T 770.952.2481
 GMCNETWORK.COM

ISSUE	DATE
PRELIMINARY	08.15.2019
75% SUBMITTAL	10.01.2019
BID READY	10.18.2019

NORTHGATE HIGH SCHOOL
 SANITARY SEWER
 COWETA COUNTY WATER AND SEWERAGE AUTHORITY

CATL190025

FORCE MAIN PLAN & PROFILE

C.13 sheet of

PROFESSIONAL ENGINEER
 No. 24141
 10-18-19
 TIMOTHY G. BLAYDES

DRAWN BY: DS
 CHECKED BY: CB