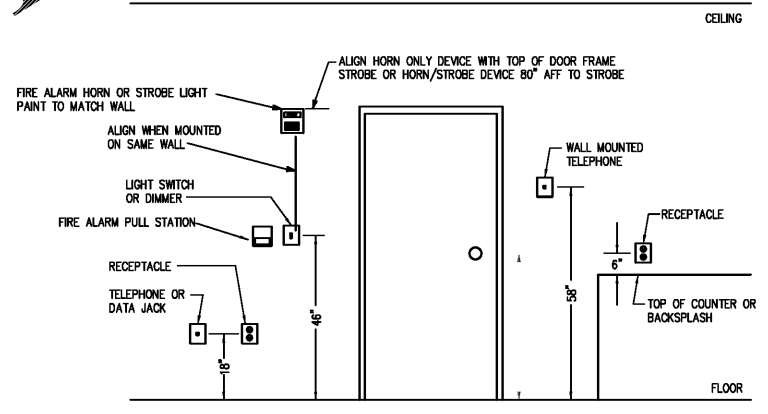


HP											
VOLTAGE	PHASE	WIRE	MCB (A)	MLO (A)	AIC	MOUNTING SURFACE	MANUFAC.	MDL #	DWG REF.	REMARKS	
120/208	3	4	60	60	22K						
TYPE LEGEND											
L	K	PROVIDE EQUIPMENT GROUND BUS									
R	F	PROVIDE FEED THRU AND/OR SUB FEED LUGS FOR MULTI-SECTION PANELS									
M	O	OTHER									
CKT #	ITEM SERVED	TYPE	WIRE	CONDUIT	TRIP	P	LOAD (VA)	PHASE	TRIP	P	ITEM SERVED
1	EXTERIOR RECEPTS	L	#12 3/4"	20A	1	300	A	200	1	20A	3/4"
3	SPARE	-	-	-	-	-	-	-	-	-	-
5	WATER COOLER	R	#12 3/4"	20A	1	850	C	300	1	20A	3/4"
7	LRG. VEST TOILETS	L	#12 3/4"	20A	1	1500	A	1500	2	20A	3/4"
9	IVH	M	#12 3/4"	20A	2	1500	B	1500	-	-	-
11	-	-	-	-	-	-	-	-	-	-	-
13	IVH	M	#12 3/4"	20A	2	1500	C	0	1	20A	-
15	-	-	-	-	-	-	-	-	-	-	-
17	SPARE	-	-	-	-	-	-	-	-	-	-
19	SPARE	-	-	-	-	-	-	-	-	-	-
21	-	-	-	-	-	-	-	-	-	-	-
23	-	-	-	-	-	-	-	-	-	-	-
CONNECTED LOAD (VA)			A	B	C	TOTAL					
			4250	4770	2719	11739					
NOTES											
* 1ST 100VA @ 100% REMAINING @ 50% SIZE FAC. IN ACCORDANCE WITH NEC 220.55											
** SIZE FAC. IN ACCORDANCE WITH NEC 220.55											

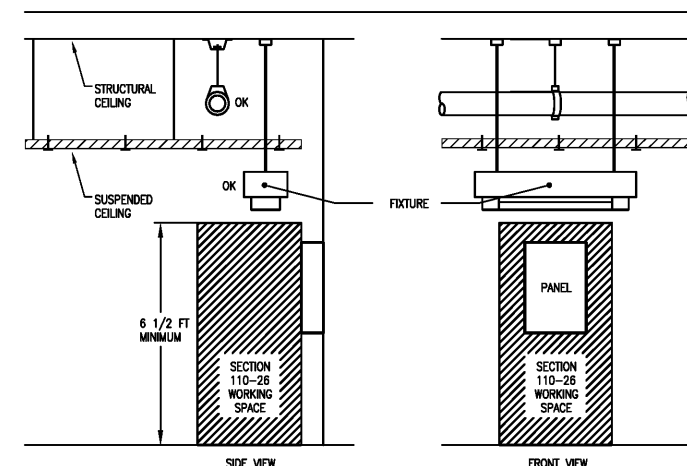
PANELBOARD SCHEDULE 1A											
VOLTAGE	PHASE	WIRE	MCB (A)	MLO (A)	AIC	MOUNTING SURFACE	MANUFAC.	MDL #	DWG REF.	REMARKS	
120/208	3	4	60	60	22K						
TYPE LEGEND											
L	K	PROVIDE EQUIPMENT GROUND BUS									
R	F	PROVIDE FEED THRU AND/OR SUB FEED LUGS FOR MULTI-SECTION PANELS									
M	O	OTHER									
CKT #	ITEM SERVED	TYPE	WIRE	CONDUIT	TRIP	P	LOAD (VA)	PHASE	TRIP	P	ITEM SERVED
1	LIGHTS	L	#12 3/4"	20A	1	450	A	900	1	20A	3/4"
3	AMF-2	M	#4 1-1/4"	90A	2	4800	B	700	1	20A	3/4"
5	RECEPTS	R	#12 3/4"	20A	1	200	A	200	1	20A	3/4"
7	HP-0	M	#10 3/4"	30A	3	2100	A	0	1	20A	-
9	-	-	-	-	-	-	-	-	-	-	-
11	-	-	-	-	-	-	-	-	-	-	-
13	IVH	M	#12 3/4"	20A	2	1500	A	1200	1	20A	3/4"
15	SPARE	-	-	-	-	-	-	-	-	-	-
17	SPARE	-	-	-	-	-	-	-	-	-	-
19	SPARE	-	-	-	-	-	-	-	-	-	-
21	SPARE	-	-	-	-	-	-	-	-	-	-
23	-	-	-	-	-	-	-	-	-	-	-
25	-	-	-	-	-	-	-	-	-	-	-
27	-	-	-	-	-	-	-	-	-	-	-
29	-	-	-	-	-	-	-	-	-	-	-
31	-	-	-	-	-	-	-	-	-	-	-
33	-	-	-	-	-	-	-	-	-	-	-
35	-	-	-	-	-	-	-	-	-	-	-
37	-	-	-	-	-	-	-	-	-	-	-
39	-	-	-	-	-	-	-	-	-	-	-
41	-	-	-	-	-	-	-	-	-	-	-
CONNECTED LOAD (VA)			A	B	C	TOTAL					
			6210	19300	7600	24870					
NOTES											
* 1ST 100VA @ 100% REMAINING @ 50% SIZE FAC. IN ACCORDANCE WITH NEC 220.55											
** SIZE FAC. IN ACCORDANCE WITH NEC 220.55											

PANELBOARD SCHEDULE 1B											
VOLTAGE	PHASE	WIRE	MCB (A)	MLO (A)	AIC	MOUNTING SURFACE	MANUFAC.	MDL #	DWG REF.	REMARKS	
120/208	3	4	60	60	22K						
TYPE LEGEND											
L	K	PROVIDE EQUIPMENT GROUND BUS									
R	F	PROVIDE FEED THRU AND/OR SUB FEED LUGS FOR MULTI-SECTION PANELS									
M	O	OTHER									
CKT #	ITEM SERVED	TYPE	WIRE	CONDUIT	TRIP	P	LOAD (VA)	PHASE	TRIP	P	ITEM SERVED
1	LIGHTS	L	#12 3/4"	20A	1	600	A	700	1	20A	3/4"
3	AMF-1	M	#4 1-1/4"	90A	2	4800	B	700	1	20A	3/4"
5	RECEPTS	R	#12 3/4"	20A	1	200	A	200	1	20A	3/4"
7	HP-1	M	#8 1"	35A	3	2400	A	0	1	20A	-
9	-	-	-	-	-	-	-	-	-	-	-
11	-	-	-	-	-	-	-	-	-	-	-
13	SPARE	-	-	-	-	-	-	-	-	-	-
15	SPARE	-	-	-	-	-	-	-	-	-	-
17	SPARE	-	-	-	-	-	-	-	-	-	-
19	SPARE	-	-	-	-	-	-	-	-	-	-
21	SPARE	-	-	-	-	-	-	-	-	-	-
23	-	-	-	-	-	-	-	-	-	-	-
25	-	-	-	-	-	-	-	-	-	-	-
27	-	-	-	-	-	-	-	-	-	-	-
29	-	-	-	-	-	-	-	-	-	-	-
31	-	-	-	-	-	-	-	-	-	-	-
33	-	-	-	-	-	-	-	-	-	-	-
35	-	-	-	-	-	-	-	-	-	-	-
37	-	-	-	-	-	-	-	-	-	-	-
39	-	-	-	-	-	-	-	-	-	-	-
41	-	-	-	-	-	-	-	-	-	-	-
CONNECTED LOAD (VA)			A	B	C	TOTAL					
			3840	1200	3000	7040					
NOTES											
* 1ST 100VA @ 100% REMAINING @ 50% SIZE FAC. IN ACCORDANCE WITH NEC 220.55											
** SIZE FAC. IN ACCORDANCE WITH NEC 220.55											

PANELBOARD SCHEDULE 2A											
VOLTAGE	PHASE	WIRE	MCB (A)	MLO (A)	AIC	MOUNTING SURFACE	MANUFAC.	MDL #	DWG REF.	REMARKS	
120/208	3	4	60	60	22K						
TYPE LEGEND											
L	K	PROVIDE EQUIPMENT GROUND BUS									
R	F	PROVIDE FEED THRU AND/OR SUB FEED LUGS FOR MULTI-SECTION PANELS									
M	O	OTHER									
CKT #	ITEM SERVED	TYPE	WIRE	CONDUIT	TRIP	P	LOAD (VA)	PHASE	TRIP	P	ITEM SERVED
1	RECEPTS	R	#12 3/4"	20A	1	200	A	200	1	20A	3/4"
3	RECEPTS	R	#12 3/4"	20A	1	200	A	200	1	20A	3/4"
5	RECEPTS	R	#12 3/4"	20A	1	200	A	200	1	20A	3/4"
7	HP-2	M	#8 1"	35A	3	2400	A	0	1	20A	-
9	-	-	-	-	-	-	-	-	-	-	-
11	-	-	-	-	-	-	-	-	-	-	-
13	IVH	M	#12 3/4"	20A	2	1500	A	180	1	20A	3/4"
15	-	-	-	-	-	-	-	-	-	-	-
17	IVH	M	#12 3/4"	20A	2	1500	B	0	1	20A	-
19	-	-	-	-	-	-	-	-	-	-	-
21	SMALL APPLIANCE	R	#12 3/4"	20A	1	1200	B	0	1	20A	-
23	SMALL APPLIANCE	R	#12 3/4"	20A	1	1200	C	0	1	20A	-
25	IVH	M	#12 3/4"	20A	2	1500	A	0	-	-	-
27	SPARE	-	-	-	-	-	-	-	-	-	-
29	SPARE	-	-	-	-	-	-	-	-	-	-
31	SPARE	-	-	-	-	-	-	-	-	-	-
33	SPARE	-	-	-	-	-	-	-	-	-	-
35	-	-	-	-	-	-	-	-	-	-	-
37	-	-	-	-	-	-	-	-	-	-	-
39	-	-	-	-	-	-	-	-	-	-	-
41	-	-	-	-	-	-	-	-	-	-	-
CONNECTED LOAD (VA)			A	B	C	TOTAL					
			9600	12800	11200	33600					
NOTES											
* 1ST 100VA @ 100% REMAINING @ 50% SIZE FAC. IN ACCORDANCE WITH NEC 220.55											
** SIZE FAC. IN ACCORDANCE WITH NEC 220.55											



3 TYPICAL DEVICE MOUNTING HEIGHTS
E-6 NONE



4 WORKING CLEARANCE FOR ELECTRICAL EQUIPMENT
E-6 N.E.C. ARTICLE 110-26

FOR PRICING ONLY

REVISIONS	
NO.	DATE