

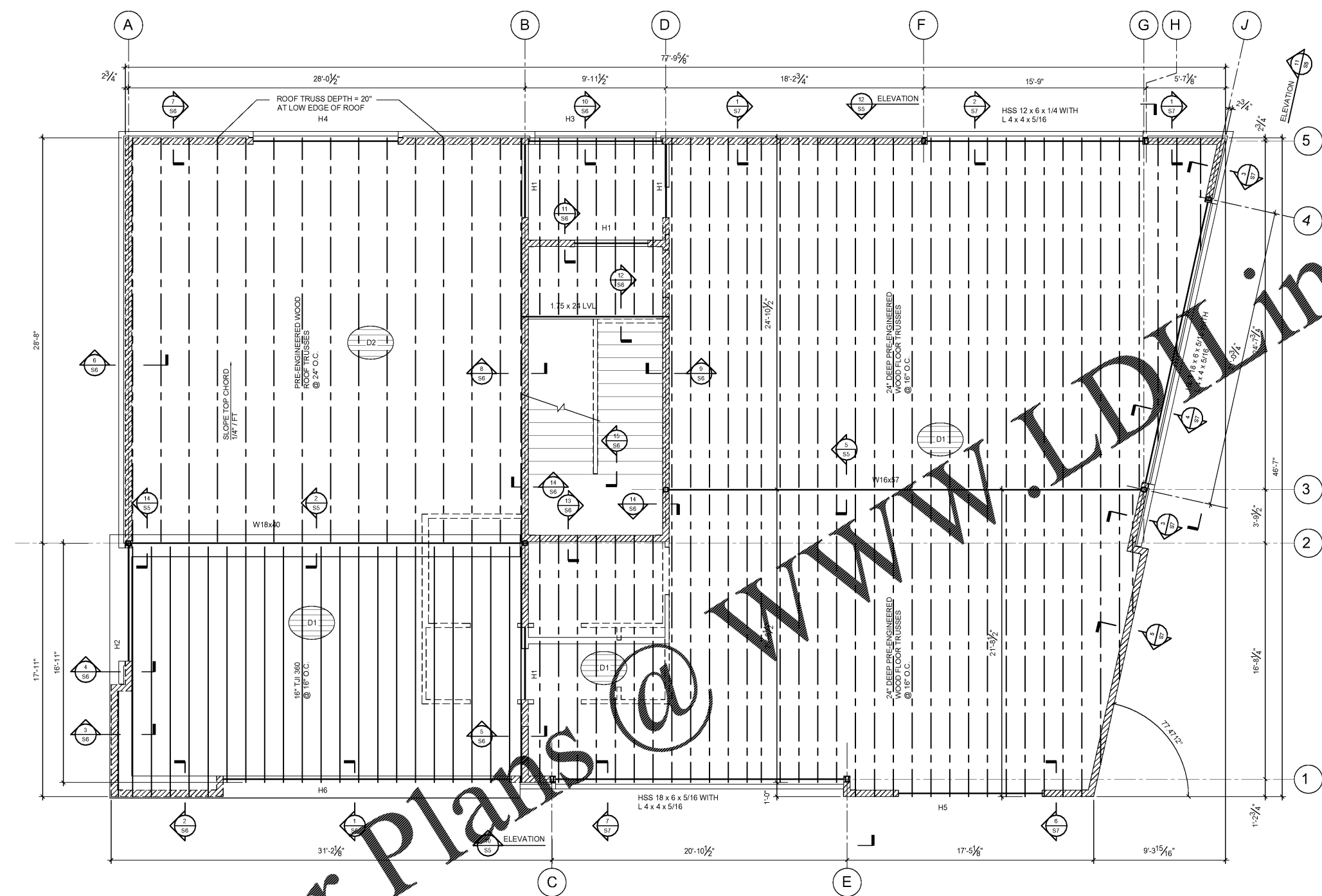
ISSUED FOR BID
NOT FOR
CONSTRUCTION
10-22-19

REVISIONS	
NO.	DATE

BH PECAN, LLC
900 PECAN AVENUE
CHARLOTTE, NORTH CAROLINA 28205

Project No: _____
Scale: 1923
Date Drawn 10/22/19
Sheet Title
SECOND FLOOR AND LOW ROOF FRAMING PLAN

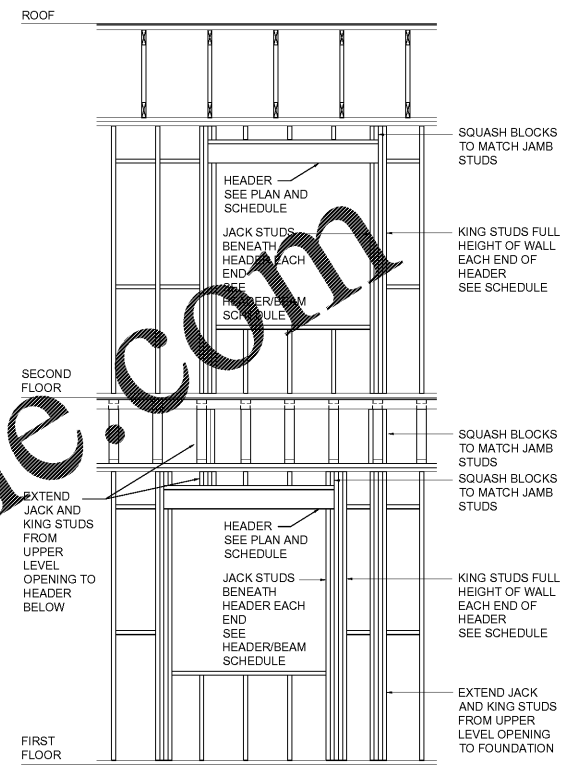
S-2



1 SECOND FLOOR AND LOW ROOF FRAMING PLAN
SCALE: 1/4"=1'-0"

- FRAMING PLAN LEGEND:**
- H"x" INDICATES HEADER TYPE. SEE SCHEDULE THIS SHEET.
 - D1 INDICATES 3/4" T&G PLYWOOD FLOOR DECKING. PLACE LONG DIMENSION OF PANELS PERPENDICULAR TO TO FRAMING. STAGGER END JOINTS 4'-0". FASTEN TO SUPPORTS WITH CONTINUOUS GLUE BEAD AND 10d NAILS @ 6" O.C. AT PANEL EDGES AND @ 12" O.C. AT PANEL INTERIOR. PANEL EDGES PERPENDICULAR TO SUPPORTS SHALL BE UNBLOCKED.
 - D2 INDICATES 5/8" APA RATED PLYWOOD ROOF DECK. PLACE LONG DIMENSION OF PANELS PERPENDICULAR TO TO FRAMING. STAGGER END JOINTS 4'-0". FASTEN TO SUPPORTS WITH 10d NAILS @ 6" O.C. AT PANEL EDGES AND @ 12" O.C. AT PANEL INTERIOR. PANEL EDGES PERPENDICULAR TO SUPPORTS SHALL BE UNBLOCKED.
 - INDICATES LOAD BEARING WALL.

- FRAMING PLAN NOTES:**
1. SEE SHEET S4 FOR GENERAL NOTES.
 2. SEE ARCHITECTURAL DRAWINGS FOR PLAN DIMENSIONS OF ALL WALLS AND WALL OPENINGS.
 3. SEE ARCHITECTURAL DRAWINGS FOR ROOF SLOPES AND TRUSS DIMENSIONS AT EAVE CONDITIONS.
 4. PERIMETER AND BEARING WALL STUDS SHALL BE 2x6 @ 16" O.C.
 5. SEE HEADER BEAM SCHEDULE THIS SHEET FOR JACK STUDS AND POSTS AT HEADER AND BEAM BEARING POINTS.



2 BEARING WALL OPENING FRAME DETAIL
SCALE: 3/8"=1'-0"

MASONRY VENEER LINTEL ANGLE SCHEDULE

MAXIMUM CLEAR OPENING WIDTH	LINTEL ANGLE SIZE
6'-4"	L4x4x1/4
10'-0"	L6x4x5/16 (LLV)

MASONRY VENEER LINTEL SCHEDULE NOTES:

1. BEAR ANGLES 8" MINIMUM ON MASONRY EACH END.

HEADER AND BEAM SCHEDULE

HEADER TYPE	HEADER MEMBERS	JACK STUDS	KING STUDS
H1	(3) 2 x 8	(1) 2 x 6	(1) 2 x 6
H2	(3) 2 x 10	(1) 2 x 6	(2) 2 x 6
H3	(3) 2 x 10	(2) 2 x 6	(1) 2 x 6
H4	(3) 1.75 x 11.25 LVL	(2) 2 x 6	(3) 2 x 6
H5	(3) 1.75 x 11.25 LVL	(3) 2 x 6	(3) 2 x 6
H6	(3) 1.75 x 22 LVL	(4) 2 x 6	(4) 2 x 6

- HEADER SCHEDULE NOTES:**
1. PROVIDE CONTINUOUS PLYWOOD OR LUMBER BETWEEN PLYS TO MATCH WALL THICKNESS FOR ALL HEADERS.
 2. PROVIDE BLOCKING SAME SIZE AS JAMB / POST STUDS THROUGH FLOOR LEVELS.
 3. FASTEN JACK AND KING STUDS WITH 12d NAILS @ 12" O.C. EACH PLY.
 4. FASTEN HEADERS WITH (2) ROWS OF 16d NAILS @ 12" O.C. EACH SIDE. LOCATE ROWS 2" FROM TOP AND BOTTOM EDGE OF HEADER.

Order Plans @ WWW.LDLINE.com