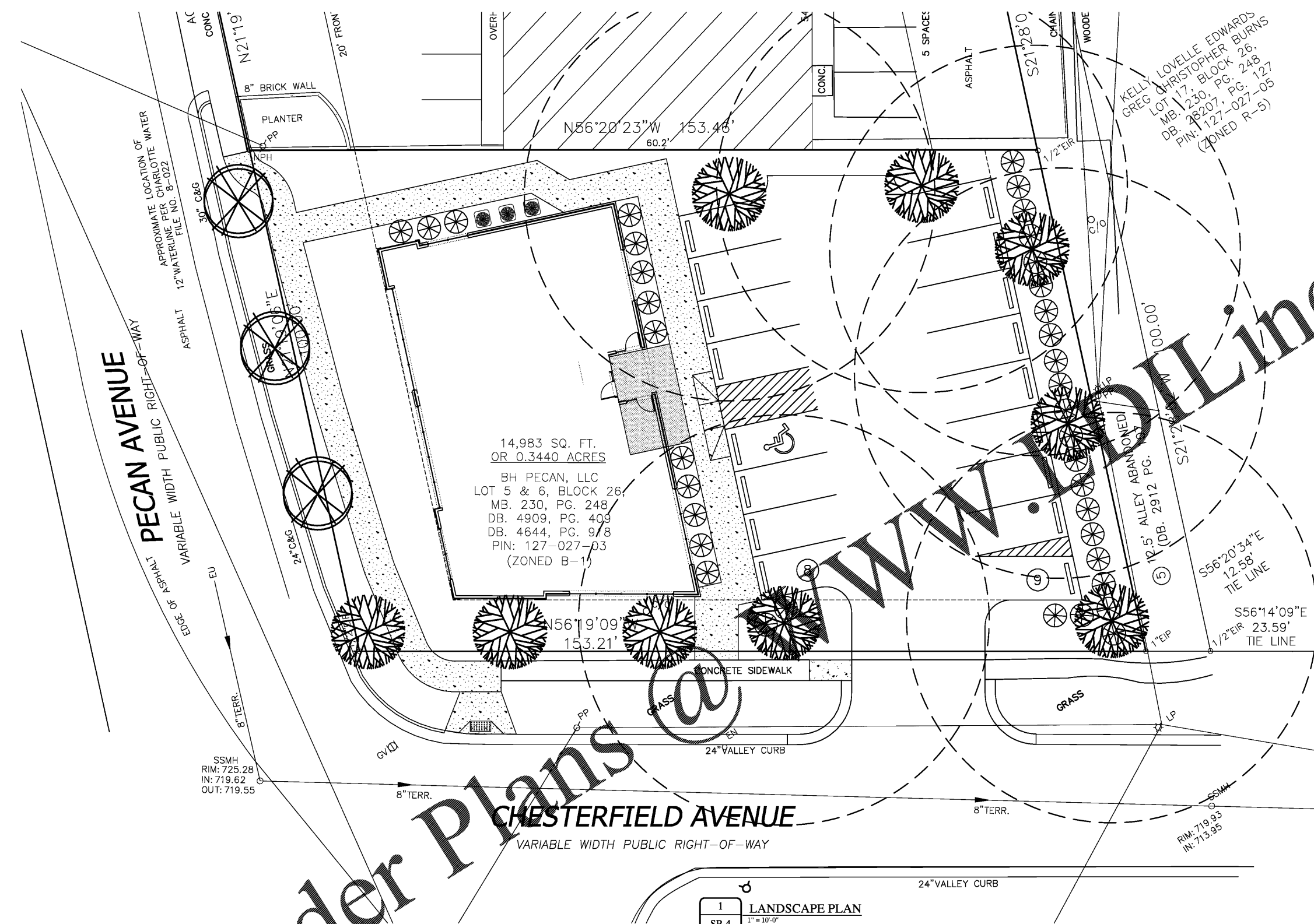


REVISIONS	
NO.	DATE

- Charlotte Urban Forestry - Tree Planting and Preservation Requirements (updated 10/10/16)**  
**Plant Material**
- Minimum tree size at planting is 2" caliper and 8' tall for single-stem trees. All multi-stem plants must be tree form, 13. Minimum tree size at planting is 2-inch caliper (for single stem trees). All multi-stem plants must be tree form, maximum 3 to 5 trunks, and minimum 10' tall. Where 3" single-stem caliper trees are specified/required the minimum height shall be 10' tall, if multi-stem trees are specified then they shall be a minimum of 12' tall.
  - All new trees must have **straight trunks with strong central leaders intact to the top of the crown** unless multi-stem trees are specified. All required trees shall be typical of their species and variety, have normal growth habits, have well-developed branches, be vigorous and have fibrous root systems. Trees with major girdling roots will NOT be accepted. Trees with co-dominant branching will NOT be accepted. Trees that have been sheared, topped or cut back to multiply the branching structure will NOT be accepted. Trees shall be free of abrasions, damage, disease, pests and cracks. All pruning cuts greater than 1/2 inch diameter shall have callus tissue formed prior to planting. No pruning cut on the trunk shall be more than one-half the diameter of the central leader at the height where the cut is made. Root flares shall be located at grade. Trees with more than 2" of soil covering the root ball/flare from will NOT be accepted (CLDS 40.09).
  - Size of required trunk area of roots and size of balls shall be in accordance with ANSI Z60.1 (latest edition) published by the American Nursery & Landscape Association, and not where specified/authorized by Urban Forestry.
  - All required trees of a particular species and variety shall be uniform in size and configuration.
  - Perimeter trees in urban zones shall be 3" in caliper and be free of branches up to 6' from the top of root crown (ball).
- A minimum of 50% of new trees must be native species, and sites with more than 20% trees required will have to install multiple (3 or more) species pursuant to the Tree Ordinance Guidelines.
- 75% of required trees must be large mature species except in situations with overhead power line conflicts.
- Planting Requirements - maximum 3 to 5 trunks, and minimum 8 feet tall.**
- See CLDS 40.01 & 40.09 (on plan) for detailed tree planting requirements.
  - Plastic hose parts will NOT be accepted for tree staking. See CLDS 40.01 for approved staking method/materials.
  - All strapping, and top 1/3 of wire basket and burlap must be cut away and removed from root ball when planting.
  - For new planting areas, remove all pavement, gravel sub-base and construction debris; remove compacted soil and add 18" new topsoil, or till and amend the top 18" of existing soil to meet topsoil/planting mix standards for trees (within entire minimum area of 274 square feet).
  - Trees planted on public property will need approval from the City Arborist and/or NCDOT.
  - Review soil requirements in the Tree Ordinance Guidelines at: <http://charlottenc.gov/ld> then click Trees.
- Utility Issues**
- If any utility is being installed in or near any required tree(s) or Tree Save Area(s), call Urban Forestry Specialist to resolve PRIOR to utility installation.
  - Large maturing trees may not be planted within 25' of overhead power distribution or transmission lines.
  - If trees conflict with any utilities or signs; call Urban Forester to resolve BEFORE planting.
  - Adjust tree planting locations to avoid existing underground utilities. Plant 15' from all underground utilities.
  - No light poles, utilities or transformers can be installed in tree distance.
  - Commercial scale lighting (> 15' in height) must be a minimum distance of 30' from a tree. Pedestrian scale lighting (≤ 15' in height) must be a minimum distance of 15' from a tree. Show site lighting on landscape plan.
- Tree Save and Preservation**
- Tree protection must be installed and verified by Urban Forestry prior to starting ANY construction activity.
  - Show tree protection and tree save areas on erosion control, grading and landscape plan sheets.
  - Commercial tree save areas must be recorded on a final plat with the Mecklenburg County Register of Deeds before Urban Forestry holds can be released. A 10' no build zone around tree save areas must be referenced on the plat.
  - Tree Save Areas shall be free of invasive plant species. If an area proposed for tree save contains invasive plant species at time of proposal, such invasive plant species shall be removed prior to final CO.
  - The area of any easements (water, sewer, utility, etc.) can NOT be counted toward the tree save requirement.
  - Any alterations to tree save areas must be accomplished without mechanized equipment.
  - No structure will be allowed within 10' of tree save areas unless approved by Urban Forestry.
  - All trees on public property are protected and removal must be permitted by the city arborist (704)336-4262.
  - Contact Urban Forestry Specialist PRIOR to any crane set-up, machinery operation or temporary building erection that may impact Charlotte Tree Ordinance protected trees or tree save areas, including trees located in street right of way. Impacts may include but are not limited to: encroaching within tree drip-lines, excavation, soil compaction, tree trimming, erecting and dismantling of construction cranes.
- General**
- Submit required CO/hold release form at <http://charlottenc.gov/ld> for an inspection of tree protection/planting areas, a minimum of 5 days before the CO/hold release is needed.
  - Visit City of Charlotte's Land Development website for additional information and urban forestry requirements: <http://charlottenc.gov/ld> then click Trees.



14,983 SQ. FT.  
 OR 0.3440 ACRES  
 BH PECAN, LLC  
 LOT 5 & 6, BLOCK 26,  
 MB. 230, PG. 248  
 DB. 4909, PG. 409  
 DB. 4644, PG. 9/8  
 PIN: 127-027-03  
 (ZONED B-1)

**1 LANDSCAPE PLAN**  
 SP-4 1" = 10'-0"

PLANTING SCHEDULE				
KEY	QUANTITY	BOTANICAL NAME COMMON NAME	SIZE	COMMENTS
	9	SMALL MATURING TREE PRUNUS YEDOENSIS YOSHINO CHERRY	2" CALIPER	
	3	LARGE MATURING TREE QUERCUS LAURIFOLIA LAUREL OAK	3" CALIPER	
	37	SHRUBERY QUERCUS ILEX DWARF BURFORD HOLLY		

Chapter 21 City Tree Ordinance Code Summary  
 FOR COMMERCIAL SITES  
 (Reproduce the following data on site/landscape plans)  
**PERIMETER TREE REQUIREMENTS**  
 Show linear feet of road frontage along public maintained right-of-way including driveways. Calculate one large maturing tree every 40 linear feet or fraction thereof, or if overhead power is present, one large maturing tree every 30 feet or fraction thereof.  
 Street: PECAN / 100.00 LFT = 3 trees required / 3 trees provided  
 Street: CHESTERFIELD / 153.21 LFT = 5 trees required / 5 trees provided  
 Street: \_\_\_\_\_ / \_\_\_\_\_ LFT = \_\_\_\_\_ trees required / \_\_\_\_\_ trees provided  
 If overhead distribution power lines exist, only small maturing trees are allowed within 25ft. of lines.  
**INTERNAL TREE REQUIREMENTS**  
 One tree per 10,000 sq. ft. of impervious area or fraction thereof. All parking spaces to be within 40 feet of a tree. Minimum landscape area as a percentage of entire site is 10% for new sites and 5% for renovated sites.  
 Calculations: Total Site Area (Entire site) = 14,983 sq. ft.  
 Impervious area = 10,105 sq. ft. (\*)  
 Landscape area = 4,878 sq. ft. = 48.2 % of total imperv.  
 (\*) Internal tree requirement: Impervious area/10,000 = 2 trees required / 3 trees provided.  
**TREE SAVE AREA (TSA) REQUIREMENTS**  
 A minimum 15 percent of the overall commercial site must be preserved as tree save area (Unless the site falls under one of the exceptions).  
 Site Zoning: B-1 Wedge, Corridor (transit), Center: NA  
 Calculations: Total Site Area (Entire site) = 14,983 acres (sq. ft.)  
 Total Tree Save Area = 0 acres (sq. ft.)  
 Percentage Tree Save Area = 0 %  
 Option(s) if applicable = WILL PARTICIPATE IN THE BUYOUT PROGRAM  
 REVISED: 06/22/18

- GENERAL NOTES:**
- ALL PLANTS TO BE WELL FORMED SPECIMEN QUALITY WITH FULL, VIGOROUS GROWTH OF THE SIZE INDICATED. ALL TREES SHALL BE NURSERY GROWN AND MEET AMERICAN STANDARD FOR NURSERY STOCK (ANSI 1990, PART 1, "SHADE AND FLOWERING TREES"). MINIMUM TREE SIZE AT PLANTING IS 2" CALIPER, 10'-12" TALL IF SINGLE STEM. MULCH IS REQUIRED.
  - APPLY ANTI-TRANSPARENT TO EVERGREEN STOCK AND TO ALL DECIDUOUS STOCK IN LEAF PRIOR TO DIGGING OR SHIPPING.
  - BACK FILL PLANTS WITH A PREPARED SOIL MIX OF 8 PARTS TOPSOIL.
  - PARTS MULCH AND ONE PART WELL ROTTED MANURE. ALL STRAPPING AND TOP 2/3 OF WIRE BASKETS MUST BE CUT AWAY AND REMOVED FROM THE ROOT BALL PRIOR TO BACK FILLING PLANTING PIT.
  - FERTILIZE WITH 6-6-12 FERTILIZER BEFORE MULCHING AT THE FOLLOWING RATES: TREES: 1.5 POUNDS/CALIPER INCH SHRUBS: 25 POUND/FOOT OF SPREAD GROUND COVERS: 30 POUNDS/1000 SQUARE FEET
  - ALL PLANTS TO BE MULCHED WITH CLEAN SHREDDED BARK TO A MINIMUM DEPTH OF 3". MULCH TREES TO 3'-0" BEYOND TRUNK MINIMUM.
  - EDGE ALL PLANTING BEDS 3" DEEP & MULCH 4" THICK. MULCH FROM FRONT OF PLANT BED TO BACK OF EDGE OF PAVEMENT WHERE MATERIAL IS AGAINST PARKING.
  - THE CONTRACTOR SHALL BE RESPONSIBLE FOR VERIFYING THE LOCATION OF ALL UNDERGROUND UTILITIES PRIOR TO EXCAVATION.
  - QUANTITIES SHOWN ARE FOR CONVENIENCE ONLY. THE CONTRACTOR SHALL BE RESPONSIBLE FOR QUANTITIES AS SHOWN ON THE PLAN.
  - PLANTS ARE TO BE GUARANTEED FOR ONE YEAR FROM THE DATE OF ACCEPTANCE. THE CONTRACTOR SHALL SUBMIT WRITTEN INSTRUCTIONS TO THE OWNER FOR CARE OF THE MATERIAL. THE CONTRACTOR SHALL VISIT THE SITE PERIODICALLY AND NOTIFY THE OWNER IN WRITING IF THESE INSTRUCTIONS ARE NOT BEING FOLLOWED.
  - ADJUST TREE PLANTING LOCATIONS TO AVOID UNDERGROUND UTILITIES- PLANT 15'-20' OFF SEWER AND STORM DRAINAGE LINES AND 10'-15' OFF GAS, WATER, PHONE, AND UNDERGROUND ELECTRICAL LINES.
  - ALL NON PAVED AREAS TO RECEIVE PERMANENT SEEDING.
  - TREES MUST BE PLANTED SO THAT EACH PARKING SPACE IS NO MORE THAN 40' FROM A TREE TRUNK.
  - NO LIGHT OR UTILITY POLES TO BE PLACED IN TREE ISLANDS.
  - TREES PLANTED IN R/W TO BE APPROVED BY LANDSCAPE MANAGEMENT.