

DOOR SCHEDULE

NOTE: CONTRACTOR TO FURNISH AND INSTALL ALL DOORS, DOOR FRAMES, SIGNS AND HARDWARE.

MARK	ROOM NAME	TYPE	QTY	SIZE W x H x T	MATL	FINISH	MATL	FINISH	TYPE	"UL"	SIGN	DETAIL	REMARKS
01	CUSTOMER SHOWROOM	F	1	3'-0" X 7'-0" X 1 3/4"	AL	BLACK ANODIZED	AL	BLACK ANODIZED	P	-	EXIT	5/A6	SEE-D04, D14, D15 & D17
02	CUSTOMER SHOWROOM	F	1	3'-0" X 7'-0" X 1 3/4"	AL	BLACK ANODIZED	AL	BLACK ANODIZED	P	-	-	1-D/A8	SEE-D04
03	OFFICE	H	1	3'-0" X 7'-0" X 1 3/4"	HM	PT-1	HM	PT-1	P	-	OFFICE	1-B/A8	SEE-D06, D12, D13 & D15
04	UNISEX TOILET	G	1	3'-0" X 7'-0" X 1 3/4"	HM	PT-1	HM	PT-1	P	-	REST ROOM	1-B/A8	SEE-D10, D13 & D15
05	CHANGING AREA	L	1	3'-0" X 7'-0" - TRAFFIC	PE	MANUFACTURER'S GRAY	HM NO STOP	PT-1 (CHANGING AREA) PT-4 (SERVICE BAYS)	P	-	BREAKROOM	1-A/A8	SEE-D06, D07, D08, D09, & D15
06	SHOP TOILET	G	1	3'-0" X 7'-0" X 1 3/4"	HM	PT-1	HM	PT-1	P	-	SHOP REST ROOM	1-B/A8	SEE-D10 & D15
07	SERVICE BAY	K	1	3'-0" X 7'-0" X 1 3/4"	HM	PT-4 (SERVICE BAYS) EXTERIOR - SEE A4	HM	PT-4 (SERVICE BAYS) EXTERIOR - SEE A4	M	-	EXIT	1/A6 & 2/A6	SEE-D01, D06, & D13
08	SERVICE BAY	J	1	10'-0" X 10'-0" X 1 3/4"	-	PRE-FINISHED	-	-	-	-	-	15/A7	SEE-D01, D02, D03, D04 & D09
09	SERVICE BAY	J	1	10'-0" X 10'-0" X 1 3/4"	-	PRE-FINISHED	-	-	-	-	-	15/A7	SEE-D01, D02, D03, D04 & D09
10	SERVICE BAY	J	1	10'-0" X 10'-0" X 1 3/4"	-	PRE-FINISHED	-	-	-	-	-	15/A7	SEE-D01, D02, D03, D04 & D09
11	SERVICE BAY	J	1	10'-0" X 10'-0" X 1 3/4"	-	PRE-FINISHED	-	-	-	-	-	15/A7	SEE-D01, D02, D03, D04 & D09
12	SERVICE BAY	J	1	10'-0" X 10'-0" X 1 3/4"	-	PRE-FINISHED	-	-	-	-	-	15/A7	SEE-D01, D02, D03, D04 & D09
13	SERVICE BAY	J	1	10'-0" X 10'-0" X 1 3/4"	-	PRE-FINISHED	-	-	-	-	-	15/A7	SEE-D01, D02, D03, D04 & D09
14	SERVICE BAY	J	1	10'-0" X 12'-0" X 1 3/4"	-	PRE-FINISHED	-	-	-	-	-	15/A7	SEE-D01, D02, D03, D04 & D09
15	SERVICE BAY	J	1	10'-0" X 10'-0" X 1 3/4"	-	PRE-FINISHED	-	-	-	-	-	15/A7	SEE-D01, D02, D03, D04 & D09
16	SERVICE BAY	G	1	4'-0" X 7'-0" X 1 3/4"	HM	PT-4 (SERVICE BAYS) EXTERIOR - SEE A4	HM	PT-4 (SERVICE BAYS) EXTERIOR - SEE A4	M	-	EXIT	1/A6 & 2/A6	SEE-D01 & D13

DOOR SCHEDULE NOTES

- GC PACKAGE AVAILABLE FROM NATIONAL VENDOR - DH PAGE, INC. (417)831-5585
- GENERAL NOTES:
 1. ALL THRESHOLDS AT EXTERIOR DOORS TO BE SET IN FULL BED OF MASTIC.
 2. ALL HARDWARE SHALL CONFORM WITH ICC A117.1 AND GOVERNING CODES.
- D01. INSULATE EXTERIOR DOORS AS REQUIRED BY CRITERIA IN SPECIFICATIONS.
 D02. TRACK AND HARDWARE BY O.H. DOOR MANUFACTURER.
 D03. ACTUAL DOOR SIZE IS 2" WIDER AND 1" HIGHER THAN DOOR OPENING (PROVIDE FOR 1" LAP AT HEAD AND JAMBS)
 D04. HARDWARE BY DOOR MANUFACTURER REFER TO SPECIFICATIONS.
 D05. ELECTRIC OPERATOR
 D06. PROVIDE DOOR LITE REFER DOOR TYPES.
 D07. GC TO FIELD VERIFY DOOR SIZE PRIOR TO ORDERING DOOR.
 D08. DOOR COLOR GRAY
 D09. BRUSH EDGE SEALS BY DOOR MANUFACTURER.
 D10. UNDERCUT DOOR 1/2"
 D11. PREP GATE FOR ELECTRIC STRIKE (REMOTE BUZZER TO BE LOCATED AT MVS DESK)
 D12. PROVIDE LOUVER IN BASE OF DOOR PER DOOR TYPE
 D13. DOOR & FRAME TO BE PAINTED TO MATCH ADJACENT WALL UNO.
 D14. LOCKING HARDWARE ON ENTRY DOORS TO HAVE KEYS ACCESS FROM THE EXTERIOR AND THUMB TURNS ON INTERIOR.
 D15. GC TO PROVIDE TACTILE DOOR EDGE AS NOTED TO COMPLY WITH ADA.
 D16. VERIFY HARDWARE QUANTITIES FOR EACH LEAF.
 D17. PROVIDE PLATE REINFORCEMENT FOR HOLD OPEN AT DOOR FRAME AND ON THE EXTERIOR OF THE MAIN ENTRANCE FOR CRASH CHAIN.
 D18. G.C. TO PROVIDE SIGN ON DOOR REQUEST STORE MANAGER TO DISABLE ALARM PRIOR TO HINGING DOOR.
 D19. G.C. TO PROVIDE & INSTALL SLIDING DOORS, FRAME, TRIM AND HARDWARE. COORDINATE WITH DOOR HARDWARE SPECIFICATIONS.
 D20. NO KICK PANEL OR PLYWOOD REQUIRED.
 PROVIDE DOOR HARDWARE (S)

DOOR SCHEDULE MATERIAL KEY

MARK	DESCRIPTION
AL	ALUMINUM
CL	CHAIN LINK
HM	HOLLOW METAL
PE	POLYETHYLENE
WD	WOOD

ROOM FINISH SCHEDULE

ROOM NO.	ROOM NAME	FLOOR	WALLS												CEILING	NOTES		
			MATL	FIN	RIGHT	BASE	TOP	FIN	BASE	LEFT	FIN	BASE	BOTTOM	FIN			BASE	
100	CUSTOMER SHOWROOM	CONC.	SEE A2	GYP. BD.	SEE F2	RB	GYP. BD.	SEE F2	RB	GYP. BD.	SEE F2	RB	GYP. BD.	SEE F2	RB	O.T.S.	PT-2	SEE RF2, RF8, RF9
101	UNISEX TOILET	CONC.	SEE A2	GYP. BD./FRP	SEE A2	RB	GYP. BD./FRP	SEE A2	RB	GYP. BD./FRP	SEE A2	RB	GYP. BD./FRP	SEE A2	RB	O.T.S.	PT-2	SEE RF2, RF4, RF6, RF8
102	OFFICE	CONC.	SEE A2	GYP. BD.	SEE A2	RB	GYP. BD.	SEE A2	RB	GYP. BD.	SEE A2	RB	GYP. BD.	SEE A2	RB	O.T.S.	PT-2	SEE RF2, RF8, RF9
103	SHOP TOILET	CONC.	SEE A2	GYP. BD./FRP	SEE A2	RB	GYP. BD./FRP	SEE A2	RB	GYP. BD./FRP	SEE A2	RB	GYP. BD./FRP	SEE A2	RB	O.T.S.	PT-3	SEE RF2, RF4, RF6, RF8
104	BREAK AREA	CONC.	SEE A2	GYP. BD./FRP	SEE A2	RB	GYP. BD./FRP	SEE A2	RB	GYP. BD./FRP	SEE A2	RB	GYP. BD./FRP	SEE A2	RB	O.T.S.	PT-2	SEE RF2, RF6, RF8
105	SERVICE BAYS	CONC.	SEE A2	PLYWD.	SEE A2	-	PLYWD.	SEE A2	-	PLYWD.	SEE A2	-	PLYWD.	SEE A2	-	O.T.S.	PT-3	SEE RF1, RF3, RF5, RF7, RF8, RF9
106	PARTS/INVENTORY	CONC.	SEE A2	PLYWD.	SEE A2	-	PLYWD.	SEE A2	-	OPEN	-	-	PLYWD.	SEE A2	-	O.T.S.	PT-2	SEE RF2, RF3, RF7, RF8
107	UTILITY AREA #1	CONC.	SEE A2	PLYWD.	SEE A2	-	PLYWD.	SEE A2	-	PLYWD.	SEE A2	-	PLYWD.	SEE A2	-	O.T.S.	PT-3	SEE RF5, RF7
108	UTILITY AREA #2	CONC.	SEE A2	OPEN	SEE A2	-	PLYWD.	SEE A2	-	PLYWD.	SEE A2	-	PLYWD.	SEE A2	-	O.T.S.	PT-3	SEE RF5, RF7, RF8

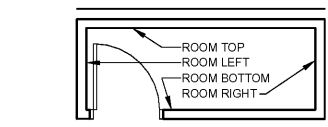
ROOM FINISH REMARKS

- RF1. SERVICE AREA PAINT SCHEME - ALL GIRTS, COLUMNS, PURLINS AND METAL BUILDING STRUCTURE TO BE PRIMED BY METAL BUILDING MANUFACTURER.
 - PAINT FROM DIMENSION FLOOR TO CEILING PT-4
 - PAINT ALL EXPOSED CONDUITS, 3" BORES AND EXPOSED SURFACES VISIBLE TO PUBLIC VIEW. PIPING FOR AIR AND SPRINKLER SYSTEMS ARE NOT TO BE PAINTED. DUCT WORK TO BE PAINT PT-2
 RF2. ALL EXPOSED GIRTS, PURLINS, COLUMNS AND METAL BUILDING STRUCTURE TO BE PRIMED. PAINT EXPOSED STRUCTURE PT-2 AS NOTED.
 RF3. USE SHERWIN WILLIAMS WATER BASED CATALYZED EPOXY FOR WALLS. THIS IS A 2-PART PAINT WITH (PART A) / (PART B) = (B70W211 w/ epoxy hardener B60V25)
 RF4. PROVIDE YELLOW SAFETY STRIP AS SHOWN ON PLANS.
 RF5. FRP COLOR: #1276 SATIN SANDSTONE TEXTURE (STCS) SANDSTONE FINISH (WALL PRIMER REQUIRED)
 RF6. PROVIDE WHITE FACED INSULATION AT ROOF DECK TO COMPLY WITH 2018 NCIECC.
 RF7. PROVIDE BLACK FACED INSULATION AT ROOF DECK TO COMPLY WITH 2018 NCIECC.
 RF8. ALL EXPOSED ROOF STRUCTURE TO BE PRIMED. PAINT EXPOSED STRUCTURE PT-3 AS NOTED.

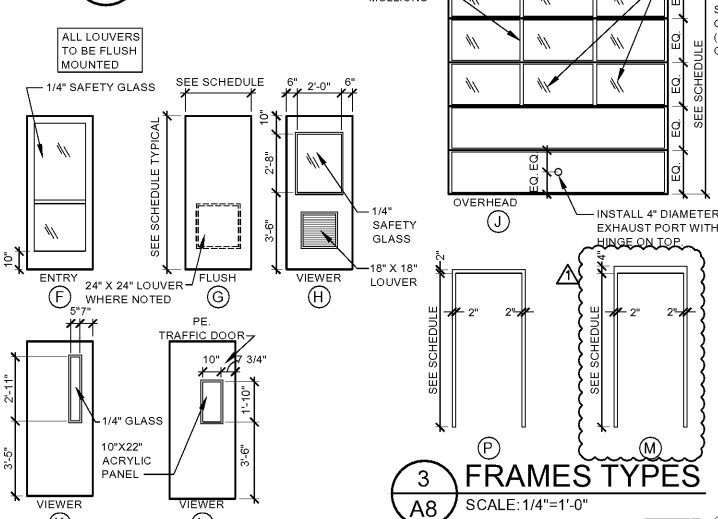
ROOM SCHEDULE MATERIAL KEY

MARK	DESCRIPTION
CONC.	CONCRETE
SEALED	CONCRETE WITH APPLIED SEALER
GYP. BD.	GYP. BOARD
O.T.S.	OPEN TO STRUCTURE
PLYWD.	PLYWOOD
RB	RESILIENT BASE
POLISHED	CONCRETE WITH APPLIED SEALER AND POLISHED
CPT	CARPET TILE

ROOM ORIENTATION KEY



1 DOOR DETAILS



2 DOOR TYPES

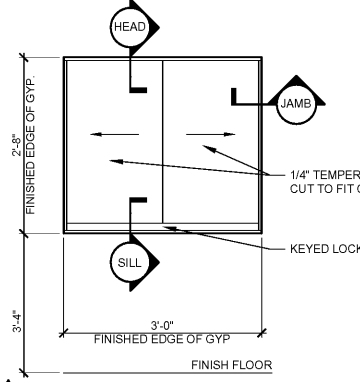


ROOM FINISH SCHEDULE

ROOM NO. ROOM NAME FLOOR WALLS CEILING NOTES

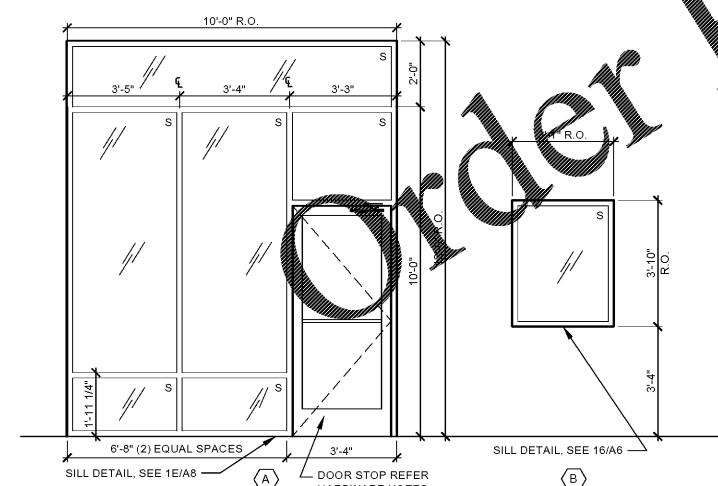
8 PASS THRU DETAIL

1A8 SCALE: 3/4"=1'-0"



4 WINDOWS TYPES

1A8 SCALE: 3/8"=1'-0"



- GENERAL NOTES:
 1. ALL STOREFRONT & INTERIOR WINDOWS ARE TO BE FIELD VERIFIED PRIOR TO INSTALLATION BY GC.
 2. PROVIDE DOUBLE PANE INSULATED GLASS FOR ALL STOREFRONT LOCATIONS.
 3. "S" INDICATES SAFETY GLASS REQUIRED. GC TO CONFIRM SAFETY GLAZING IS LABELED PER CODE.

SGA Design Group, P.C.
 1437 South Boulevard, Suite 550
 Tulsa, Oklahoma 74119 3609
 P 918.597.8601
 F 918.597.8601
 www.sgaesigngroup.com

Firestone COMPLETE AUTO CARE

THE DRAWING IS THE PROPERTY OF BRIDGESTONE RETAIL OPERATIONS, LLC AND IS LOANED ON THE EXPRESS CONDITION THAT IT IS NOT TO BE USED IN ANY WAY OTHER THAN FOR THE INTERESTS OF BRIDGESTONE RETAIL OPERATIONS, LLC. NO REPRODUCTION, DISTRIBUTION, OR DISSEMINATION OF THIS DRAWING IS PERMITTED WITHOUT THE WRITTEN PERMISSION OF BRIDGESTONE RETAIL OPERATIONS, LLC.

NEW FCAC STORE
 2019 - JANUARY - SMALLER
 5845 NC HWY 42
 GARNER, NC

SGA DESIGN GROUP, P.C.
 Registered Professional Engineer
 No. 51720
 Tulsa, Oklahoma

MITCHELL R. GARRETT
 Registered Architect
 No. 12330
 Tulsa, Oklahoma

Digitally signed by Mitchell Garrett
 DN: cn=Mitchell Garrett, o=SGA Design Group, P.C., ou=SGA Design Group, P.C., email=mgarrett@sgadesigngroup.com, c=US
 2019.09.27 15:28:52 -0500

09/27/2019

PAINT COLOR SCHEDULE:

NOTE: ALL COLOR NAMES INDICATED ARE FOR SELECTION PURPOSES ONLY. SEE PAINT SPECS FOR SPECIFIC REQUIREMENTS

DESCRIPTION: (ALL "SHERWIN / WILLIAMS" NUMBERS 'SW' & 'CC'-CUSTOM COLORS)

KEY:	COLOR:	S.W. #
PT-1	"REFLECTION"	-SW7661
PT-2	"CAVIAR"	-SW6990
PT-3	"PURE WHITE"	-SW7005
PT-4	"IRON ORE"	-SW7069
PT-5	"SAFETY RED"	-SW4081
PT-6	"ANTIQUUE WHITE"	-SW5119
PT-7	"BLACK"	-SW4090
PT-8	"SAFETY YELLOW"	-SW4084
PT-9	"ROW HOUSE TAN"	-SW7689
PT-10	"LATTE"	-SW6108
PT-11	"WARM STONE"	-SW7032
PT-13	"REAL RED"	-SW6668
PT-20	"MORNING FOG"	-SW8255
PT-21	"CROSSROADS"	-SW3521
PT-22	"EMPIRE GOLD"	-SW0012

ISSUE BLOCK

NO.	DATE	ADD#1
1	09/27/19	

PROPERTY NO.: 160017
 6 DIGIT NO.: 903065
 4 DIGIT NO.: 015P

AOR PROJECT NUMBER: 1965801
 TO PERMIT: DATE: 07/26/19
 TO BID: DATE: ###-###

SHEET TITLE:
ROOM FINISH AND DOOR SCHEDULES

SHEET NUMBER:
A8