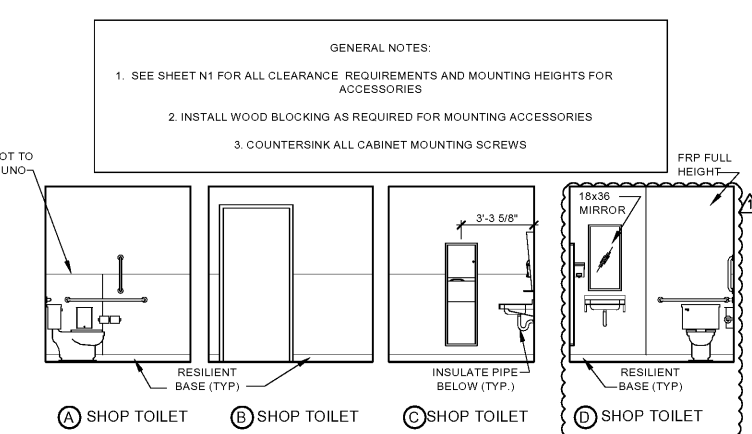
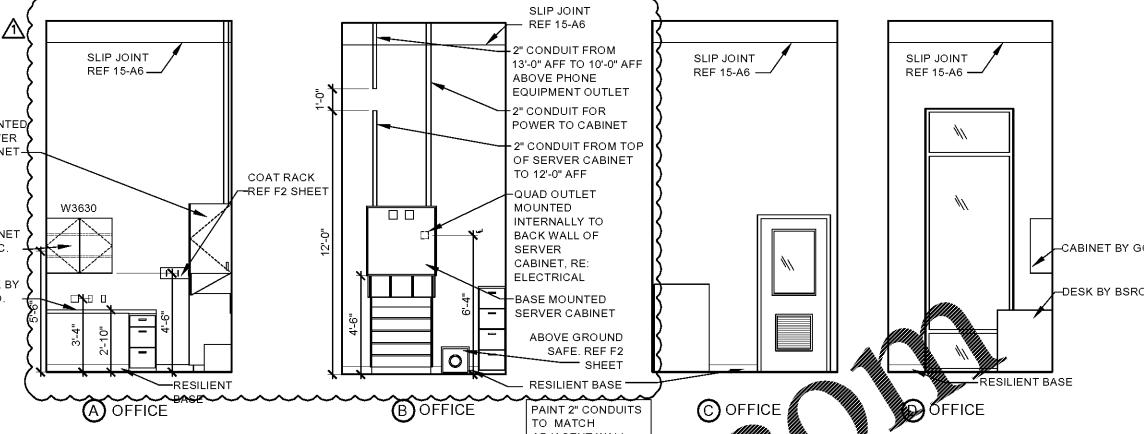


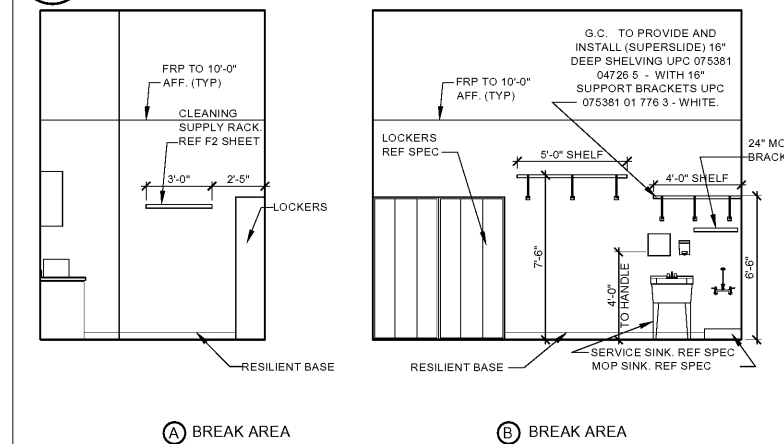
1 INTERIOR ELEVATIONS A7 SCALE: 1/4"=1'-0"



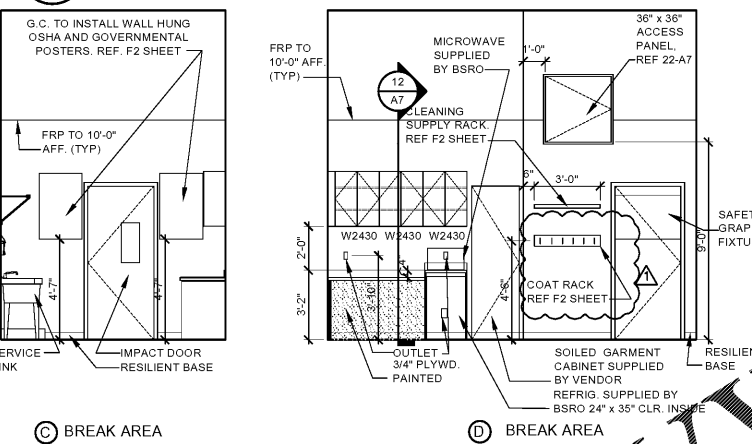
3 INTERIOR ELEVATIONS A7 SCALE: 1/4"=1'-0"



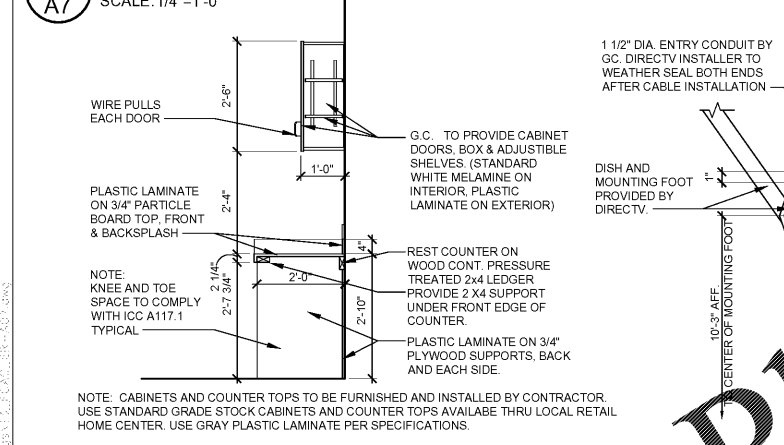
4 INTERIOR ELEVATIONS A7 SCALE: 1/4"=1'-0"



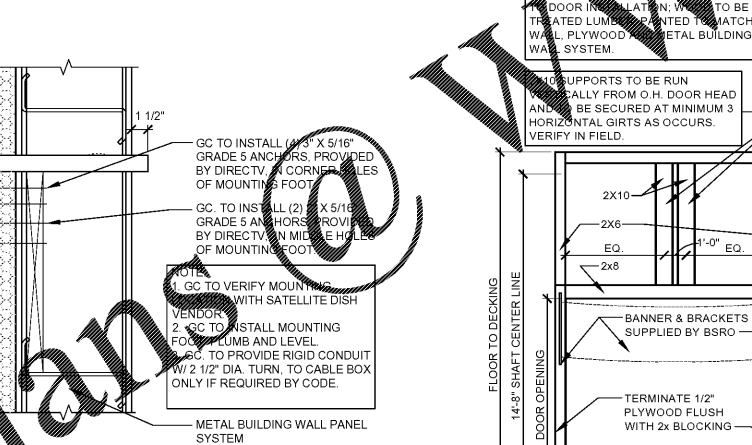
6 INTERIOR ELEVATIONS A7 SCALE: 1/4"=1'-0"



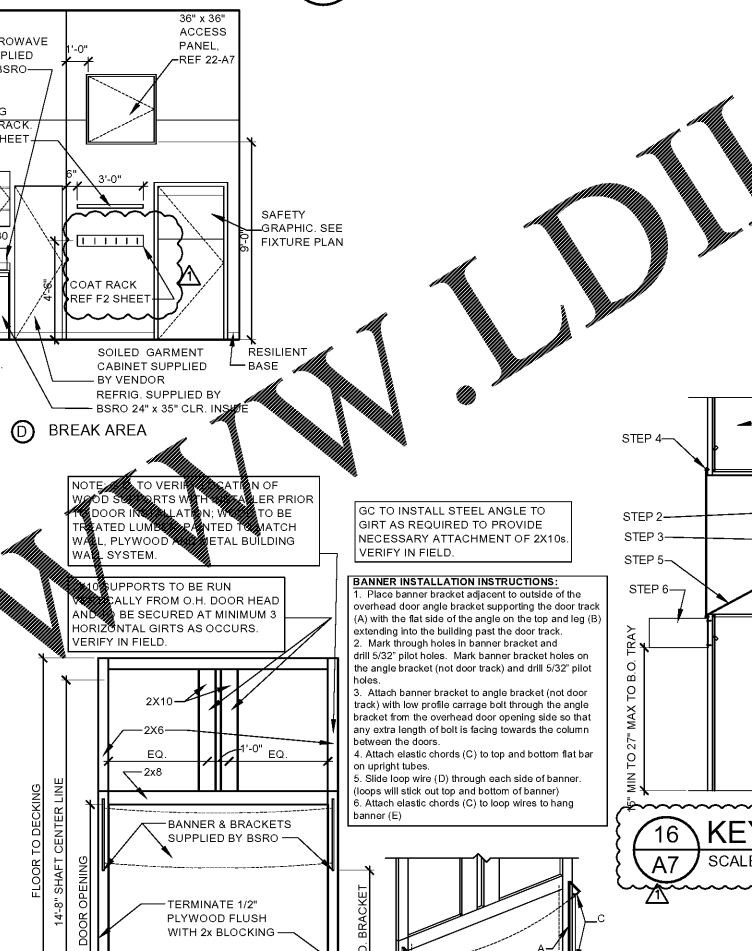
3 INTERIOR ELEVATIONS A7 SCALE: 1/4"=1'-0"



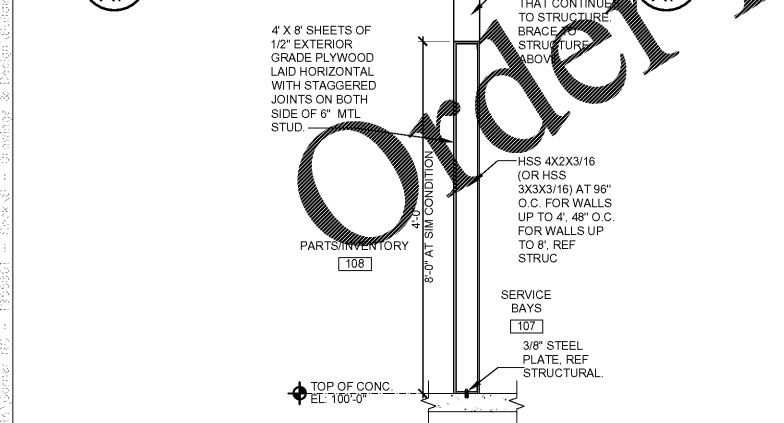
12 CABINET SECTION A7 SCALE: 1/2"=1'-0"



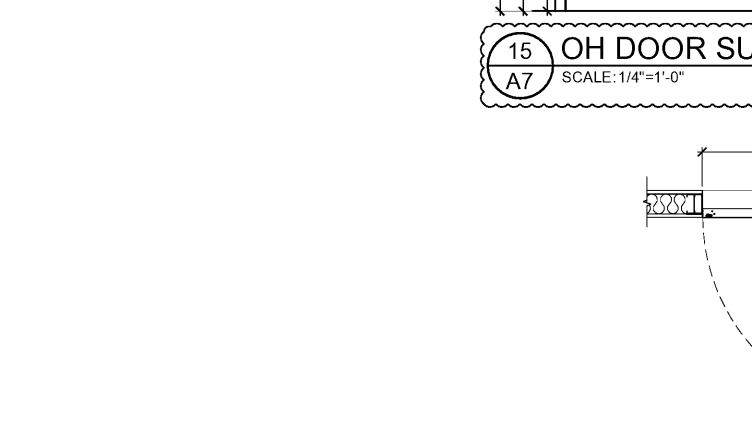
14 SATELLITE MOUNTING DETAIL A7 SCALE: 1/2"=1'-0"



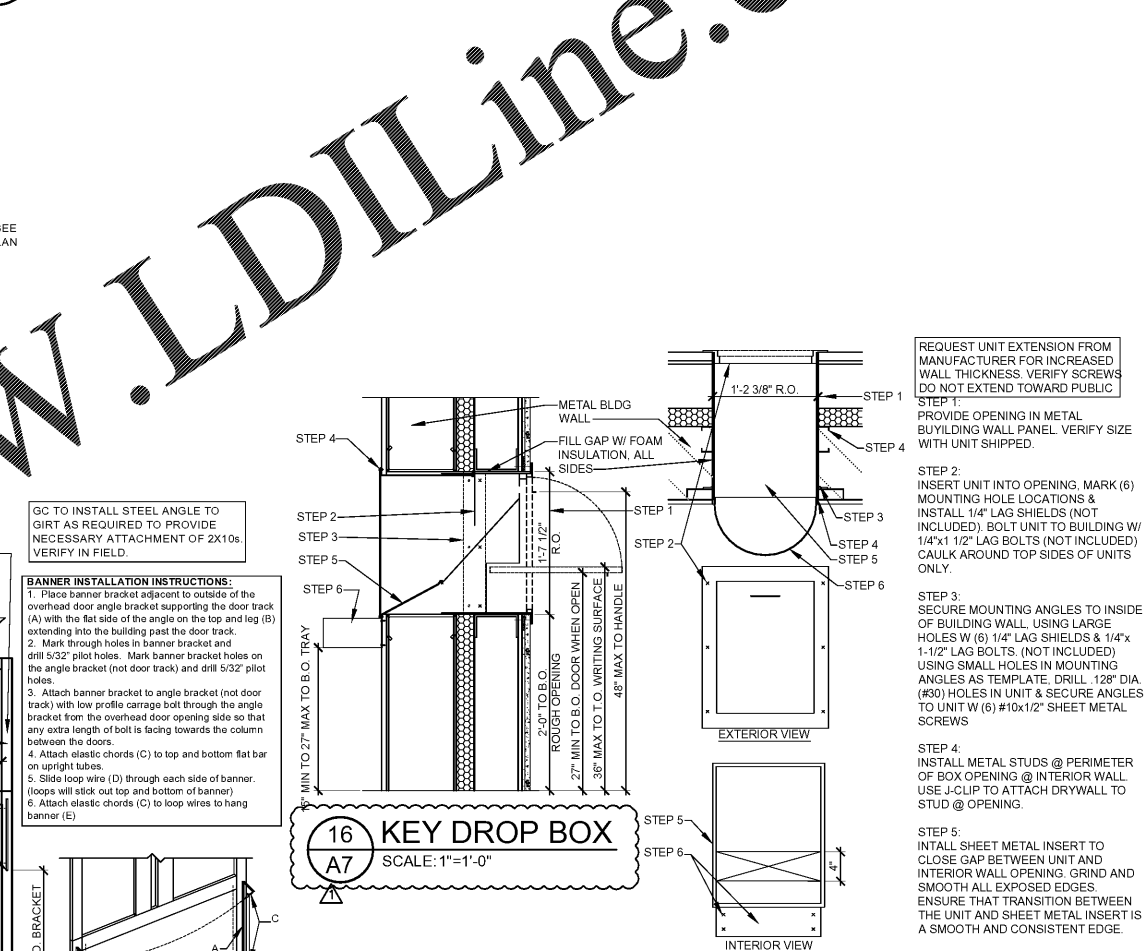
15 OH DOOR SUPPORT DETAIL A7 SCALE: 1/4"=1'-0"



20 PARTIAL HEIGHT WALL SECTION A7 SCALE: 1/2"=1'-0"



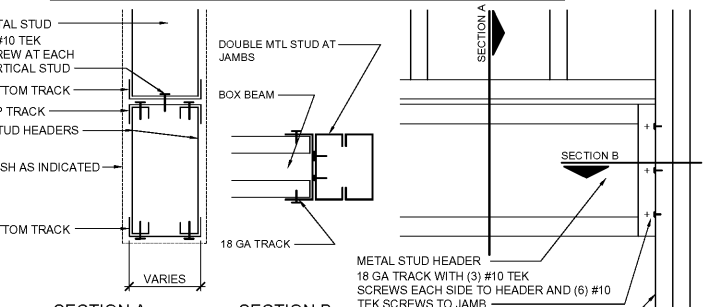
22 ACCESS PANEL DETAIL A7 SCALE: 3/4"=1'-0"



16 KEY DROP BOX A7 SCALE: 1"=1'-0"

INTERIOR NON-LOAD BRG PARTITION HEADER SCHEDULE

HEADER LENGTH	HEADER MEMBERS	MINIMUM EFFECTIVE PROPERTIES PER STUD
2' TO 6'	(2) 6" x 18 GAUGE	Ix = 2.042 Sx = 0.670
6' TO 8'	(2) 6" x 16 GAUGE	Ix = 2.518 Sx = 0.639
8' TO 10'	(2) 6" x 14 GAUGE	Ix = 3.094 Sx = 1.031



23 HEADER CONNECTION DETAIL A7 SCALE: 1 1/2"=1'-0"

SGA Design Group, P.C.
 1437 South Boulder, Suite 550
 Tulsa, Oklahoma 74119 3609
 p 918.597.8600
 f 918.597.8601
 www.sgadesigngroup.com

Firestone
 COMPLETE AUTO CARE

THIS DRAWING IS THE PROPERTY OF BRIDGESTONE RETAIL OPERATIONS, LLC AND IS LOANED ON THE EXPRESS CONDITION THAT IT IS NOT TO BE REPRODUCED OR TRANSMITTED IN ANY FORM OR BY ANY MEANS, ELECTRONIC OR MECHANICAL, INCLUDING PHOTOCOPYING, RECORDING, OR BY ANY INFORMATION STORAGE AND RETRIEVAL SYSTEM. WITHOUT THE WRITTEN PERMISSION OF BRIDGESTONE RETAIL OPERATIONS, LLC, NO PART OF THIS DRAWING IS TO BE REPRODUCED OR TRANSMITTED IN ANY FORM OR BY ANY MEANS, ELECTRONIC OR MECHANICAL, INCLUDING PHOTOCOPYING, RECORDING, OR BY ANY INFORMATION STORAGE AND RETRIEVAL SYSTEM.

NEW FCAC STORE
 2019 - JANUARY - SMALLER
 5845 NC HWY 42
 GARNER, NC

SGA DESIGN GROUP, P.C.
 Registered Professional Engineer
 51720
 TULSA, OK

MITCHELL R. GARRETT
 Registered Architect
 12330
 TULSA, OK

Digitally signed by Mitchell Garrett
 Date: 2019.09.27 15:28:51 -0500

09/27/2019

ISSUE BLOCK

09/27/19	ADD #1
----------	--------

PROPERTY NO.: 160017
 6 DIGIT NO.: 903065
 4 DIGIT NO.: 015P

AOR PROJECT NUMBER: 1965801
 TO PERMIT: DATE: 07/26/19
 TO BID: DATE: ###-###
 J.A.D.

SHEET TITLE:
 INTERIOR ELEVS,
 SECTIONS
 & DETAILS

SHEET NUMBER:
A7