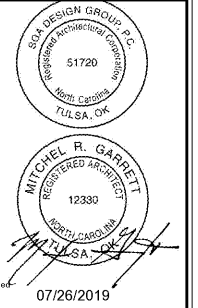




REGISTRATION OF THESE DRAWINGS IS THE PROPERTY OF BRIDGESTONE RETAIL OPERATIONS, LLC AND IS LOANED ON THE EXPRESS CONDITION THAT IT IS NOT TO BE USED IN ANY WAY DEPRECIATE TO THE INTERESTS OF BRIDGESTONE RETAIL OPERATIONS, LLC. ANY REPRODUCTION OR TRANSMISSION OF THESE DRAWINGS WITHOUT THE WRITTEN PERMISSION OF BRIDGESTONE RETAIL OPERATIONS, LLC IS STRICTLY PROHIBITED AND WILL BE CONSIDERED A VIOLATION OF THE EXCLUSIVE OWNERSHIP RIGHTS OF BRIDGESTONE RETAIL OPERATIONS, LLC.

NEW FCAC STORE
 2019 - JANUARY - SMALLER
 5845 NC HWY 42
 GARNER, NC



ISSUE BLOCK

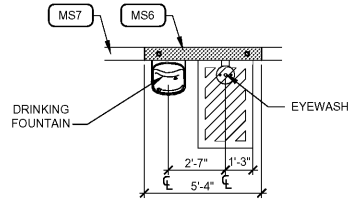
PROPERTY NO.: 160017
 6 DIGIT NO.: 903065
 4 DIGIT NO.: 015P
 AOR PROJECT NUMBER: 1955801
 TO PERMIT: DATE: 07/26/19
 TO BID: DATE: ###-##-##

SHEET TITLE:
FLOOR PLAN AND NOTES
 SHEET NUMBER:
A1.1

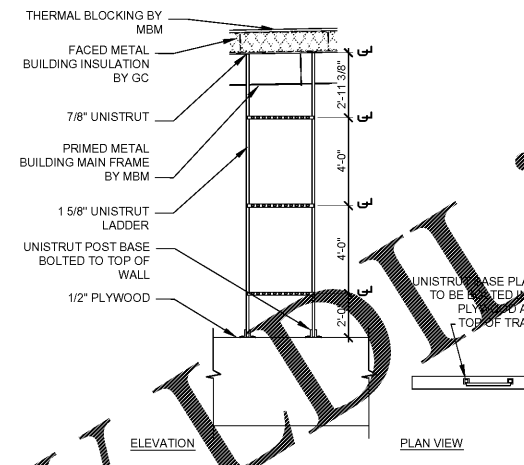
STANDARD WALL TYPES

- NOTES:
 1. SOME WALL TYPES MAY NOT BE USED. REFER TO PLANS
 2. REFER TO STRUCTURAL DRAWINGS FOR STUD GAUGES AND ADDITIONAL FRAMING INFORMATION.

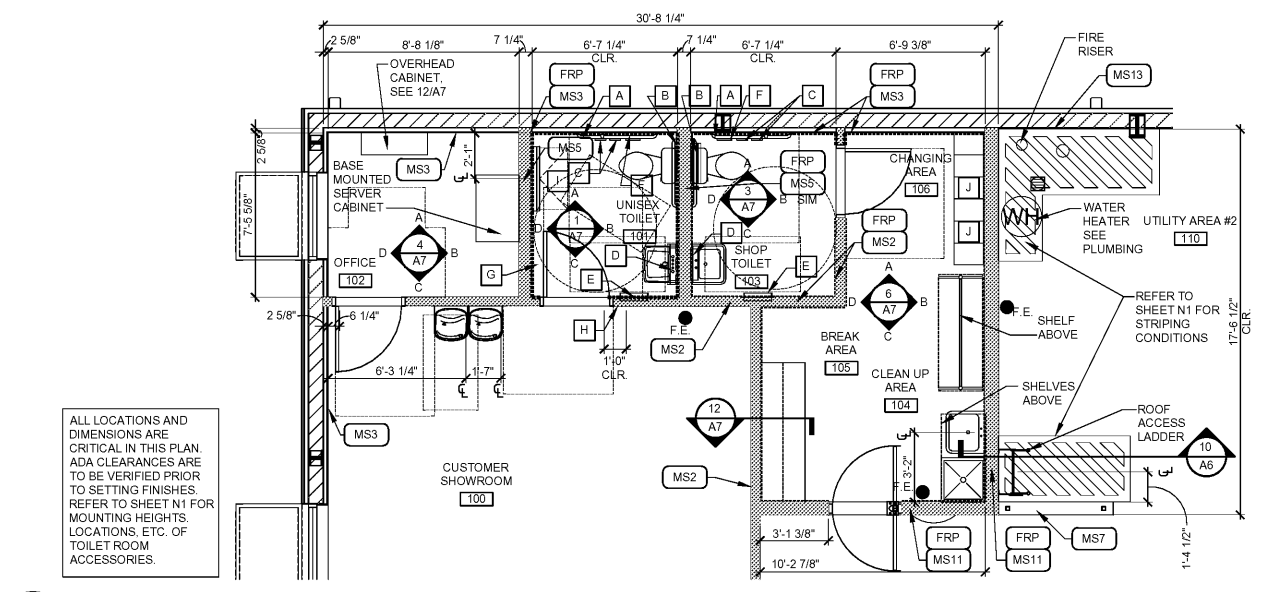
- MS1 3 5/8" METAL STUDS AT 16" O.C. WITH 5/8" GYPSUM BOARD BOTH SIDES. EXTEND PARTITION TO DECK (TYPICAL U.N.O.). USE MOISTURE RESISTANT GYPSUM BOARD ON INTERIOR SIDE OF TOILET AND MOP BASIN AREAS.
- MS2 3 5/8" METAL STUDS AT 16" O.C. WITH 5/8" GYPSUM BOARD BOTH SIDES WITH SOUND ATTENUATION BLANKETS BETWEEN. EXTEND PARTITION TO DECK (TYPICAL U.N.O.) USE MOISTURE RESISTANT GYPSUM BOARD ON INTERIOR SIDE OF TOILET AND MOP BASIN AREAS AND BEHIND DRINKING FOUNTAINS.
- MS3 (METAL BUILDING FRAME WALL SYSTEM) WITH 2" FURRING WITH 5/8" GYPSUM BOARD TO METAL DECK
- MS4 3 5/8" METAL STUDS AT 16" O.C. WITH 1/2" PLYWOOD BOTH SIDES. PAINTED (TYPICAL UNLESS NOTED OTHERWISE).
- MS5 6" METAL STUDS AT 16" O.C. WITH 5/8" GYPSUM BOARD BOTH SIDES WITH SOUND ATTENUATION BLANKETS BETWEEN. EXTEND PARTITION TO DECK (TYPICAL U.N.O.) AT SIM. CONDITION, EXTEND PARTITION 4" MIN. ABOVE CEILING. USE MOISTURE RESISTANT GYPSUM BOARD ON INTERIOR SIDE OF TOILET AND MOP BASIN AREAS.
- MS6 6" METAL STUDS TO 8" A.F.F. AT 16" O.C. STEEL COLUMNS WITHIN WALL FOR SUPPORT WITH 1/2" PLYWOOD BOTH SIDES, PAINTED. REFER STRUCTURAL DRAWINGS FOR STEEL COLUMNS.
- MS7 6" METAL STUDS TO 4" A.F.F. AT 16" O.C. STEEL COLUMNS WITHIN WALL FOR SUPPORT WITH 1/2" PLYWOOD BOTH SIDES, PAINTED. REFER STRUCTURAL DRAWINGS FOR STEEL COLUMNS.
- MS8 3 5/8" METAL STUDS AT 16" O.C. WITH 5/8" GYPSUM BOARD BOTH SIDES. 4" TALL, 3/4" PLYWOOD ATTACHED TO WALL ON SHOP SIDE ONLY FOR ELECTRICAL PANEL MOUNTING.
- MS9 METAL BUILDING FRAME WALL SYSTEM WITH 1/2" PLYWOOD TO 8'-0" A.F.F. ON INTERIOR SIDE. OPEN TO WALL STRUCTURE ABOVE.
- MS10 2 1/2" METAL STUDS FURRING WITH 5/8" GYPSUM BOARD. EXTEND PARTITION 4" MIN. ABOVE CEILING 12'-0" A.F.F. IN CUSTOMER SHOWROOM. USE MOISTURE RESISTANT GYPSUM BOARD ON INTERIOR SIDE OF TOILET AREA. FIELD VERIFY EXACT EXTENTS AFTER TAPERED COLUMNS ARE PLACED IN ORDER TO COMPLETELY CONCEAL COLUMNS.
- MS11 6" METAL STUDS AT 16" O.C. WITH 5/8" GYPSUM BOARD ON CHANGING AREA SIDE AND 1/2" PLYWOOD ON INVENTORY SIDE. EXTEND PARTITION TO DECK (TYPICAL U.N.O.) AT SIM. CONDITION, EXTEND PARTITION 4" MIN. ABOVE CEILING. USE MOISTURE RESISTANT GYPSUM BOARD ON INTERIOR SIDE OF TOILET AND MOP BASIN AREAS.
- MS12 1 5/8" METAL STUDS WITH 1/2" PLYWOOD BOTH SIDES.
- MS13 METAL BUILDING FRAME WALL SYSTEM WITH 1/2" PLYWOOD TO 12'-0" A.F.F. ON INTERIOR SIDE. OPEN TO WALL STRUCTURE ABOVE.
- MS14 3 5/8" METAL STUDS AT 16" O.C. WITH 5/8" GYPSUM BOARD ON SHOWROOM SIDE, 1/2" PLYWOOD ON SERVICE SIDE WITH SOUND ATTENUATION BLANKETS BETWEEN. EXTEND PARTITION TO DECK (TYPICAL U.N.O.) USE MOISTURE RESISTANT GYPSUM BOARD ON INTERIOR SIDE OF TOILET AND MOP BASIN AREAS AND BEHIND DRINKING FOUNTAINS.
- FRP FRP BOARD GLUE EDGE TO EDGE OF SUBSTRATE. REFER TO INTERIOR ELEVATIONS ON SHEET A7 FOR HEIGHTS A.F.F.



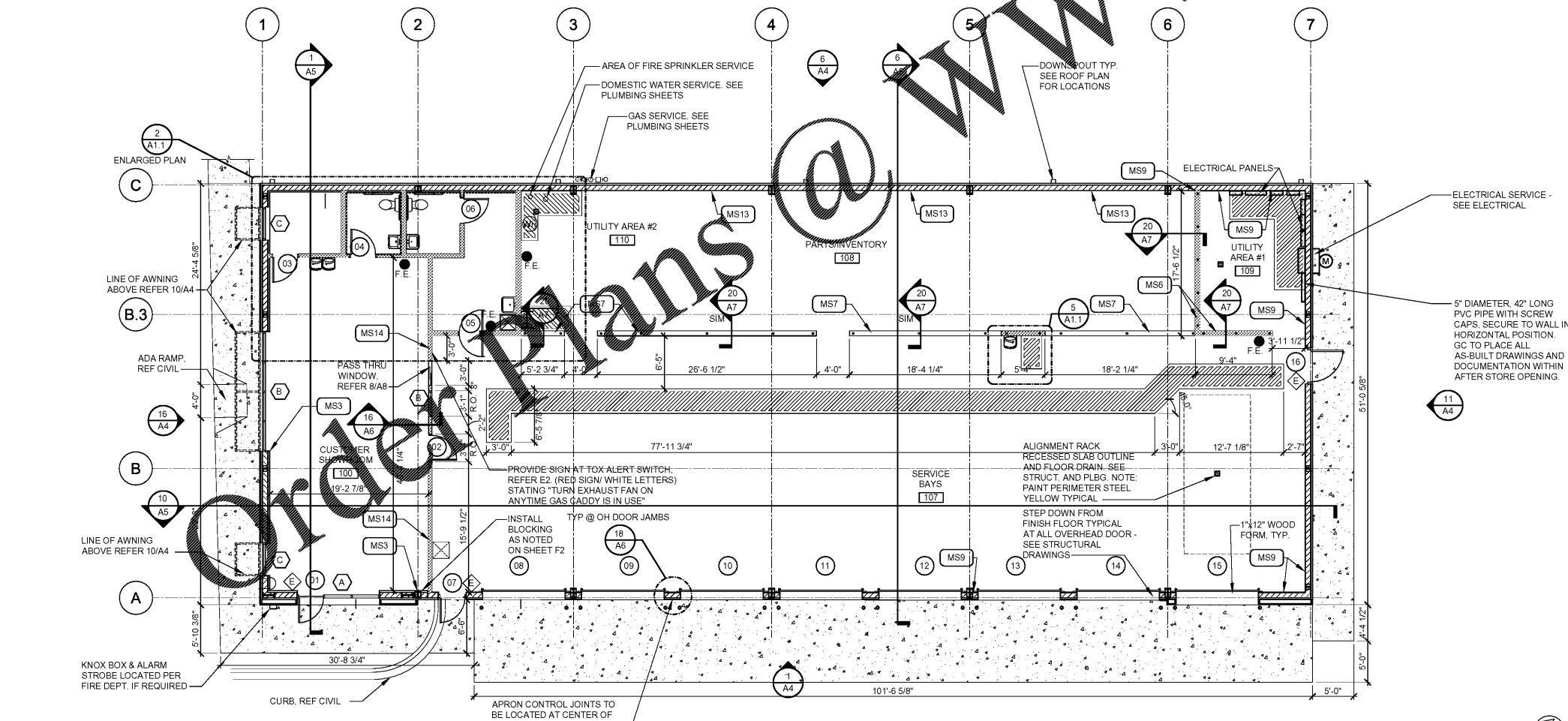
5 ENLARGED PLAN
 A1.1 SCALE: 1/4"=1'-0"



8 ENLARGED ELEVATION
 A1.1 SCALE: 1/4"=1'-0"



2 ENLARGED PLAN
 A1.1 SCALE: 1/4"=1'-0"



16 FLOOR PLAN
 A1.1 SCALE: 1/8"=1'-0"

ACCESSORIES

MARK	DESCRIPTION
A	42" GRAB BAR WITH WOOD BACKER, WITH 18" VERTICAL BAR AS REQUIRED.
B	36" GRAB BAR WITH WOOD BACKER
C	TOILET TISSUE DISPENSER
D	MIRROR - SEE ELEVATIONS FOR SIZE
E	PAPER TOWEL DISPENSER & DISPOSAL
F	SANITARY NAPKIN DISPOSAL UNIT
G	COAT HOOK
H	HANDICAP SIGN/MOUNT 5'-0" AFF TO CENTER. 8" EDGE TO JAMB EDGE.
I	BABY CHANGING STATION. SEE DETAIL 1/N1
J	6 HALF LOCKER UNIT QTY(2)-SECURE TO WALL

- NOTES:
 1. PROVIDE WOOD BLOCKING AS REQUIRED FOR MOUNTING ACCESSORIES
 2. ACCESSORY PACKAGES AVAILABLE FROM NATIONAL VENDOR
 3. REFER TO SHEET N1 FOR MOUNTING HEIGHTS, LOCATIONS, ETC OF TOILET ROOM ACCESSORIES.

GENERAL NOTES

1. WALL DIMENSIONS ARE TO FINISH CLEAR DIMENSION. ALL MATERIALS MUST BE FIGURED INTO THE LAYOUT OF THE FRAMING.
2. MASONRY OPENING SHALL BE COORDINATED WITH WINDOW OR DOOR MANUFACTURER'S REQUIREMENTS.
3. PLUMBING ROUGH INS ARE CRITICAL FOR ADA CLEARANCES. VERIFY ALL PLUMBING ROUGH INS PRIOR TO INSTALLING ROOM FINISHES.
4. ALL MASONRY DIMENSIONS ARE NOMINAL DIMENSIONS. MASONRY CONTRACTOR TO ADJUST COURSING AS NEEDED.
5. PROPOSED FIRE EXTINGUISHERS ARE LOCATED BY THE SYMBOL ● F.E. COORDINATE TYPE, SIZE AND FINAL LOCATIONS WITH LOCAL FIRE OFFICIALS
6. ALL GYP. BRD. WALLS SHALL HAVE LATERAL BRACING AND CONTROL JOINTS AS REQUIRED IN SPECIFICATION SECTION 092900.

