

BACKFLOW NOTES

1. THERE SHALL BE NO TAPS, PIPING BRANCHES, UNAPPROVED BYPASS PIPING, HYDRANTS, FIRE DEPT. CONNECTION POINTS, OR OTHER WATER USING APPURTENANCES CONNECTED TO THE SUPPLY LINE BETWEEN ANY WATER METER AND ITS REQUIRED BACKFLOW PREVENTER.
2. EACH REQUIRED BACKFLOW PREVENTION ASSEMBLY IS REQUIRED TO BE TESTED BY A APPROVED CERTIFIED TESTER PRIOR TO PLACING THE WATER SYSTEM IN SERVICE.
3. PROPOSED 3/4", 1 1/2" AND 8" REDUCED PRESSURE PRINCIPLE BACKFLOW PREVENTION ASSEMBLY AS APPROVED BY JOHNSTON COUNTY AND INSTALLED BY DEVELOPER'S CONTRACTOR DURING CONSTRUCTION. ASSEMBLY TO BE INSTALLED ABOVE-GROUND WITHIN INSULATED ENCLOSURE PER REQUIREMENTS. ENCLOSURE TO INCLUDE DRAIN PORT(S) FOR DISCHARGE WATER PER REQUIREMENTS. ENCLOSURE TO BE LOCATED OUT OF SETBACK.
3. TAMPER SWITCHES TO BE INSTALLED ON THE FIRE LINE BACKFLOW PREVENTER. INSTALL 3/4" CONDUIT FROM FIRE LINE BACKFLOW VAULT TO BUILDING ALARM SYSTEM INSIDE BUILDING. COORDINATE WITH ALARM SYSTEM MANUFACTURER.
4. PERMANENT INSTALLATION SHALL NOT BE INSTALLED ON BACKFLOW ASSEMBLY. CONTACT BACKFLOW ASSEMBLY INSPECTOR REGARDING HEATING OPTIONS.
5. ALL BACKFLOW PREVENTERS SHALL BE HEATED.

SEE GENERAL NOTES SHEET C0-1 FOR UTILITY PLAN NOTES.

UTILITY NOTES

1. SEE GENERAL NOTES SHEET C0-1 FOR UTILITY PLAN NOTES.
2. ALL CHANGES IN DIRECTION OF THE CONDUIT SHALL UTILIZE STANDARD SWEEPS WITH A MINIMUM BENDING RADIUS LISTED IN THE NEC. NO MORE THAN (2) 90-DEGREE BENDS WILL BE ALLOWED BETWEEN PULLING POINTS, OR A TOTAL OF 180 DEGREES COMBINED IN SEVERAL BENDS. PULL BOXES SHALL BE LOCATED EVERY 400 FEET UNLESS THE COMBINED TOTAL OF BENDS REQUIRE ADDITIONAL MANHOLES.
3. CONTRACTOR SHALL TEST AND HAVE CERTIFIED ALL EXISTING WATER AND SANITARY SEWER LINES AND SHALL MAKE ALL NECESSARY REPAIRS PRIOR TO FINAL PAVING.

SANITARY SEWER NOTES

1. ALL SANITARY SEWER LINES SHALL BE SDR-35 PVC WITH 36" MINIMUM COVER.
2. CONTRACTOR TO COORDINATE WITH TOWN OF GARNER AND PAY FOR TIE-IN TO WATER AND SANITARY SEWER PROPOSED FOR THIS PROJECT.
3. CONTRACTOR TO LOCATE LATERAL CONNECTIONS TO BUILDING PER PLUMBING PLANS.
4. PLACE CLEAN-OUTS ON SANITARY SEWER LATERALS AS REQUIRED BY PLUMBING CODE.
5. CONTRACTOR IS RESPONSIBLE FOR OBTAINING AN ENCROACHMENT AGREEMENT PERMIT, AS REQUIRED, TO CONSTRUCT UTILITY CONNECTIONS.
6. TRENCHES FOR SEWER LATERALS MUST REMAIN OPEN FOR PLUMBING INSPECTION.

UTILITY CONNECTION RESPONSIBILITY NOTE:

JOHNSTON COUNTY RESPONSIBILITY FOR WATER SERVICE INCLUDES THE FOLLOWING:

- CONNECTION TO THE PUBLIC WATER MAIN;
- SERVICE LATERAL TO PROPERTY LINE VALVE OR 1 FOOT BEHIND METER (WHICHEVER IS APPLICABLE)
- METER ASSEMBLY & VAULT.

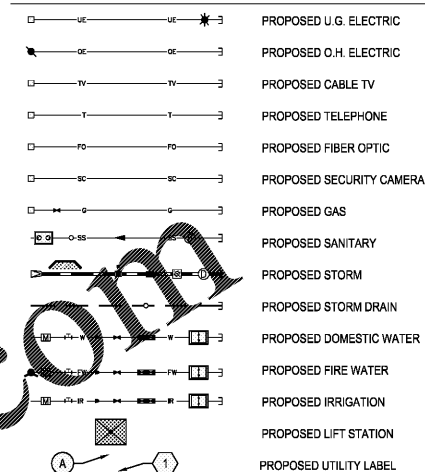
CONTRACTOR'S RESPONSIBILITY FOR WATER SERVICE INCLUDES THE FOLLOWING:

- LATERAL MAINS FROM METER TO BUILDING
- PRIVATE ONSITE WATER MAIN
- INSTALLATION OF THE BACKFLOW ASSEMBLY.
- INSTALLATION OF THE PRIVATE FIRE HYDRANT

WATER DISTRIBUTION NOTES

1. ALL DOMESTIC WATER LINES TO BE SCH. 40 PVC WITH A 36" MINIMUM COVER. FIRE DEPARTMENT SERVICE LINE SHALL BE 4" C900 WITH 36" MINIMUM COVER. BUILDING FIRE SERVICE LINE SHALL BE 8" C900 WITH 36" MINIMUM COVER. IRRIGATION SERVICE LINE SHALL BE 3/4" SCH. 40 PVC.
2. CONTRACTOR TO LOCATE TIE-INS TO BUILDING BASED ON PLUMBING PLANS.
3. 3/4" IRRIGATION, 1 1/2" DOMESTIC AND 8" FIRE WATER METERS TO BE INSTALLED BY DEVELOPER'S CONTRACTOR AND APPROVED BY JOHNSTON COUNTY. CONTRACTOR IS RESPONSIBLE FOR COORDINATING AND PAYING FOR INSTALLATION.
4. CONTRACTOR IS RESPONSIBLE FOR OBTAINING AN ENCROACHMENT AGREEMENT PERMIT AS REQUIRED, TO CONSTRUCT UTILITY CONNECTIONS.
5. LOCATE FIRE DEPARTMENT CONNECTION POINT, FIRE PROTECTION MAIN (BY OTHERS) AND FIRE DEPARTMENT REQUIREMENTS.
6. ALL METERS SHALL HAVE A VALVE BEFORE AND AFTER METER PER REQUIREMENTS.

PROPOSED UTILITY LEGEND



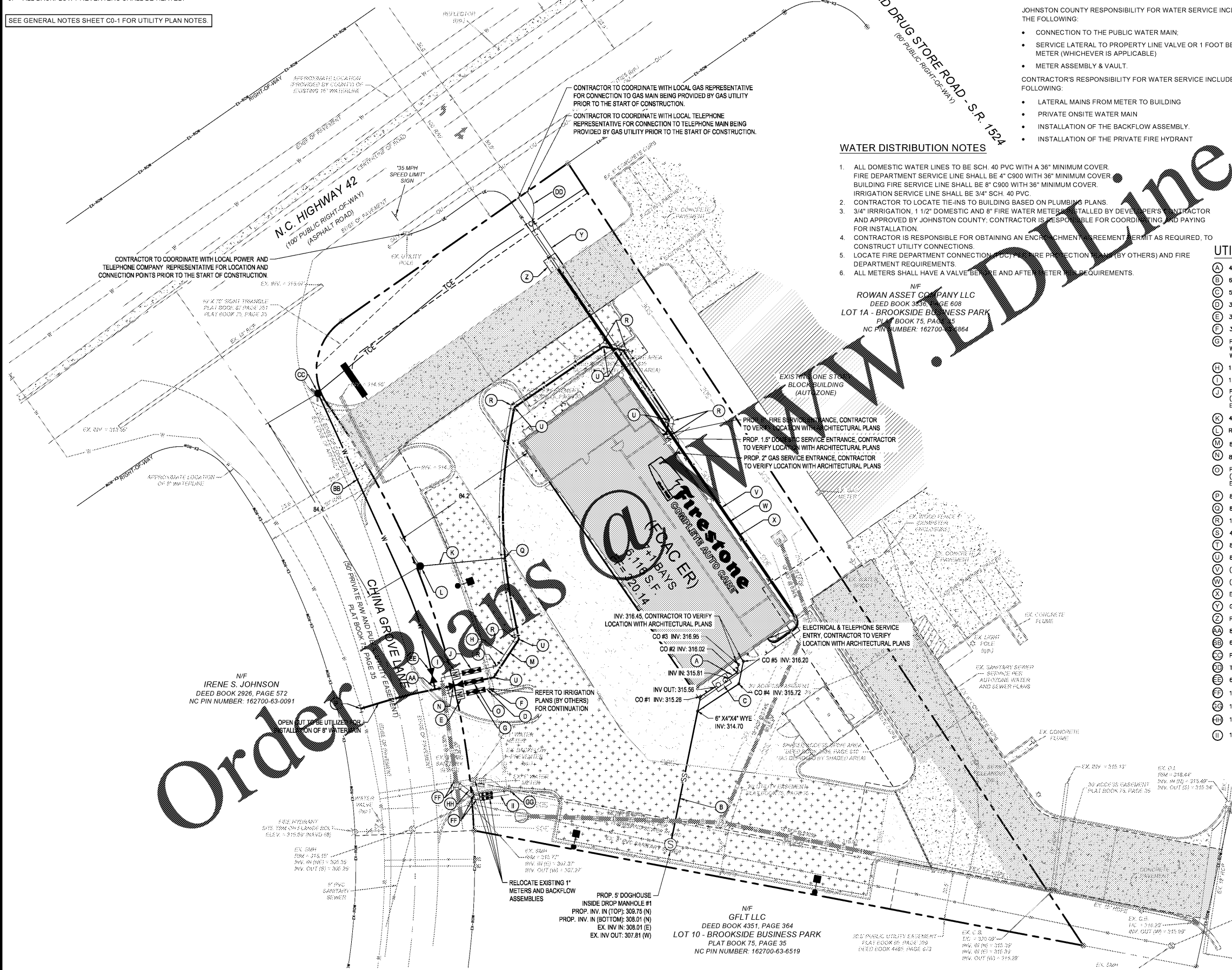
NOTE TO CONTRACTOR

CONTRACTOR SHALL INCLUDE ALL COSTS FOR TAP, CAPACITY, AND CONNECTION FEES FOR BOTH WATER AND SEWER IN BASE BID.

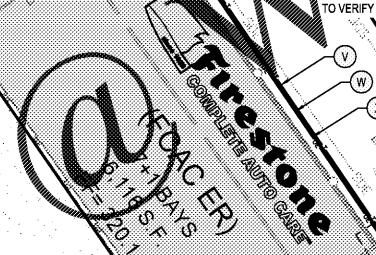
UTILITY LEGEND

- (A) 4" PVC SANITARY SEWER LATERAL LINE. COORDINATE WITH BUILDING PLUMBING PLANS.
- (B) 6" PVC SANITARY SEWER LATERAL LINE. COORDINATE WITH BUILDING PLUMBING PLANS.
- (C) 500 GPD OIL WATER SEPARATOR (OWS) WITH CLEANOUT
- (D) 3/4" PVC WATER MAIN (IRRIGATION LINE)
- (E) 3/4" METER (IRRIGATION)
- (F) 3/4" CAP
- (G) PROPOSED 3/4" REDUCED PRESSURE PRINCIPLE BACKFLOW PREVENTION ASSEMBLY (RPPA) WITH DOUBLE CHECK VALVE ASSEMBLY (DCVA). ASSEMBLY TO BE INSTALLED ABOVE-GROUND WITHIN INSULATED ENCLOSURE. ENCLOSURE TO INCLUDE DRAIN PORT(S) FOR DISCHARGE.
- (H) 1.5" PVC WATER LINE (DOMESTIC LINE)
- (I) 1.5" METER (DOMESTIC)
- (J) PROPOSED 1.5" REDUCED PRESSURE PRINCIPLE BACKFLOW PREVENTION ASSEMBLY (RPPA). ASSEMBLY TO BE INSTALLED ABOVE-GROUND WITHIN INSULATED ENCLOSURE. ENCLOSURE TO INCLUDE DRAIN PORT(S) FOR DISCHARGE.
- (K) 4" PVC WATER MAIN (FDC LINE)
- (L) REMOTE FIRE DEPARTMENT CONNECTION (FDC)
- (M) 8" PVC WATER LINE (FIRE SERVICE LINE)
- (N) 8" GATE VALVE
- (O) PROPOSED 8" REDUCED PRESSURE PRINCIPLE BACKFLOW PREVENTION ASSEMBLY (RPPA). ASSEMBLY TO BE INSTALLED ABOVE-GROUND WITHIN INSULATED ENCLOSURE. ENCLOSURE TO INCLUDE DRAIN PORT(S) FOR DISCHARGE.
- (P) 8"x8"x8" FULL BODY DI TAPPING SLEEVE AND VALVE
- (Q) 8"x8"x4" TEE W/BLOCKING
- (R) 1.5" 45° BEND WITH BLOCKING
- (S) 4" 45° BEND WITH BLOCKING
- (T) 8" 11.25° BEND WITH BLOCKING
- (U) 8" 45° BEND WITH BLOCKING
- (V) (1) 2" EMPTY CONDUIT FOR FUTURE USE (TO RUN IN ELECTRICAL TRENCH)
- (W) (2) 2" CONDUITS (CABLE TV/INTERNET USE) (TO RUN IN ELECTRICAL TRENCH)
- (X) ELECTRIC SUPPLY LINE
- (Y) GAS SUPPLY LINE
- (Z) PROPOSED TRANSFORMER AND PAD
- (AA) 8"x8"x8" TEE W/BLOCKING
- (AB) 6" DIP WATER MAIN (FIRE HYD)
- (AC) PUBLIC FIRE HYDRANT ASSEMBLY
- (AD) TELEPHONE SUPPLY LINE
- (AE) 6" GATE VALVE
- (AF) 1" 45° BEND
- (AG) 1" 22.5° BEND
- (AH) 1" PVC WATER MAIN (DOMESTIC LINE)
- (AI) 1" PVC WATER MAIN (IRRIGATION LINE)

G:\NCA\Projects\Rock Properties\6191-01 - Firestone Garner, NC\03 - DWG\PlanSheets\C6-0 - UTILITY PLAN.dwg Layout: Util Plan Plotted: 10/31/2019 8:40:44 AM



Order Plans



DESIGNED BY:	DMH	REVISED PER STAFF COMMENTS	DATE	10/22/19	REV		
DRAWN BY:	DMH						
REVIEWED BY:	ECH						

121 W. TRADE STREET, SUITE 1030
CHARLOTTE, NC 28202
www.bce.com
NC LICENSE #C-437

ROCK PROPERTIES, INC.
145 LINCOLN AVENUE, SUITE B
WINTER PARK, FL 32789

145 LINCOLN AVENUE, SUITE B
WINTER PARK, FL 32789
GARNER, JOHNSTON COUNTY, NC 27529

UTILITY PLAN

FILE NUMBER:
6191-01

DATE: 07/24/19

C4-0