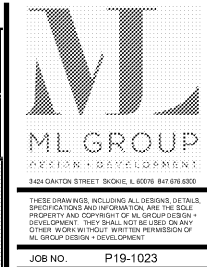


FURNITURE SCHEDULE (CONTINUED)

Description	Plan Key	Location	Schedule	Vendor- Manufacturer	Model #	Product Name	Finish/Color	Dimension	Supplier/ Contact	Notes/ Installation Pattern	Revision Number/ Date
Fabric	FB02	Day Room- 2, 3, 4, 5 Floors	Furniture	Arc Com	AC-63712	Encore	Dijon #3			Pillow Back (F20); Pillow Front and Back (F29)	
Fabric	FB03	Day Room- 2, 3, 4, 5 Floors	Furniture	LebaTex	B332-36-SDW	Stonehaven	Indigo			Lounge Chair Body (F29)	
Fabric	FB04	Day Room- 2, 3, 4, 5 Floors	Furniture	Avant Garde		Artistic	Laser 161			Pillow Front (F20)	
Fabric	FB05	Day Room- 2, 3, 4, 5 Floors	Furniture	Burch Fabrics		Odyssey	1233 Denim			Lounge Chair Seat (F29)	
Fabric	FB06	Day Room- 2, 3, 4, 5 Floors	Furniture	Burch Fabrics		atback	10205 Birch			Sofa Seat (F20); Dining Chair Seat (F31)	
Shower Curtain	FB14	Patient Bathrooms- 2nd Floor Only; Shower Room; Patient Bathrooms- Floors 3rd- 5th Only	Furniture	Corallia		Pique	1 - White				
Fabric	FB23	Patient Room- 2nd Floor Only	Furniture	DesignTex	2880-201	Faux Sure	Teal			Patient Chair Body and Seat (F23)	
Fabric	FB24	2nd Floor Nurse's Station	Furniture	Arc Com	AC-63523	insight	Sunflower #4			Conference Task Chair Seat (F1B); Nurse's Station Task Chair Seat (F18)	
Fabric	FB26	Day Room- 2, 3, 4, 5 Floors	Furniture	Burch Fabrics		Cove	1009150 Stone			Body of Sofa (F20)	
Privacy Curtain	PC01	Patient Room- 2nd Floor Only	Furniture	Arc Com	AC-33350	Rue Cler	Grain #1			Add Mesh	
Pillow	PI02	Day Room- 2, 3, 4, 5 Floors	Furniture	Kellex	Custom			20" X 20"		Knife Edge Pillow; F20; Front of Pillow (FB02); Back of Pillow (FB04)	
Pillow	PI03	Day Room- 2, 3, 4, 5 Floors	Furniture	Kellex	Custom			20" X 20"		(FB02) Arc Com Encore AC-63712 Dijon #3	
Window Treatment- Roller Shades	WT01	Day Room- 2, 3, 4, 5 Floors; Dining Room	Furniture	Aperture Contract		Asb	Ride			5% Openness Factor; Fascia in Natural Aluminum Metal; Manual Roller Shade -- Grey Plastic Clutch and Grey Fascia	
Window Treatment- Roller Shades	WT02	Patient Room- 2nd Floor Only	Furniture	Aperture Contract		Venice 5	Mushroom			5% Openness Factor; Fascia in Natural Aluminum Metal; Manual Roller Shade -- Grey Plastic Clutch and Grey Fascia	



11/01/2019 ISSUED FOR PERMIT
10/19/2019 ISSUED FOR COORDINATION
DATE ISSUE DESCRIPTION

PROJECT: **CITADEL WINSTON-SALEM**
1900 WEST FIRST STREET
WINSTON-SALEM, NC 27104
OWNER: THE CITADEL AT WINSTON-SALEM LLC
15720 BROOKHILL AVE #600 | CHARLOTTE, NC 28277

SHEET TITLE
SCHEDULES
SHEET NUMBER
A10.0.7

Order Plans @ WWW.LDILine.com