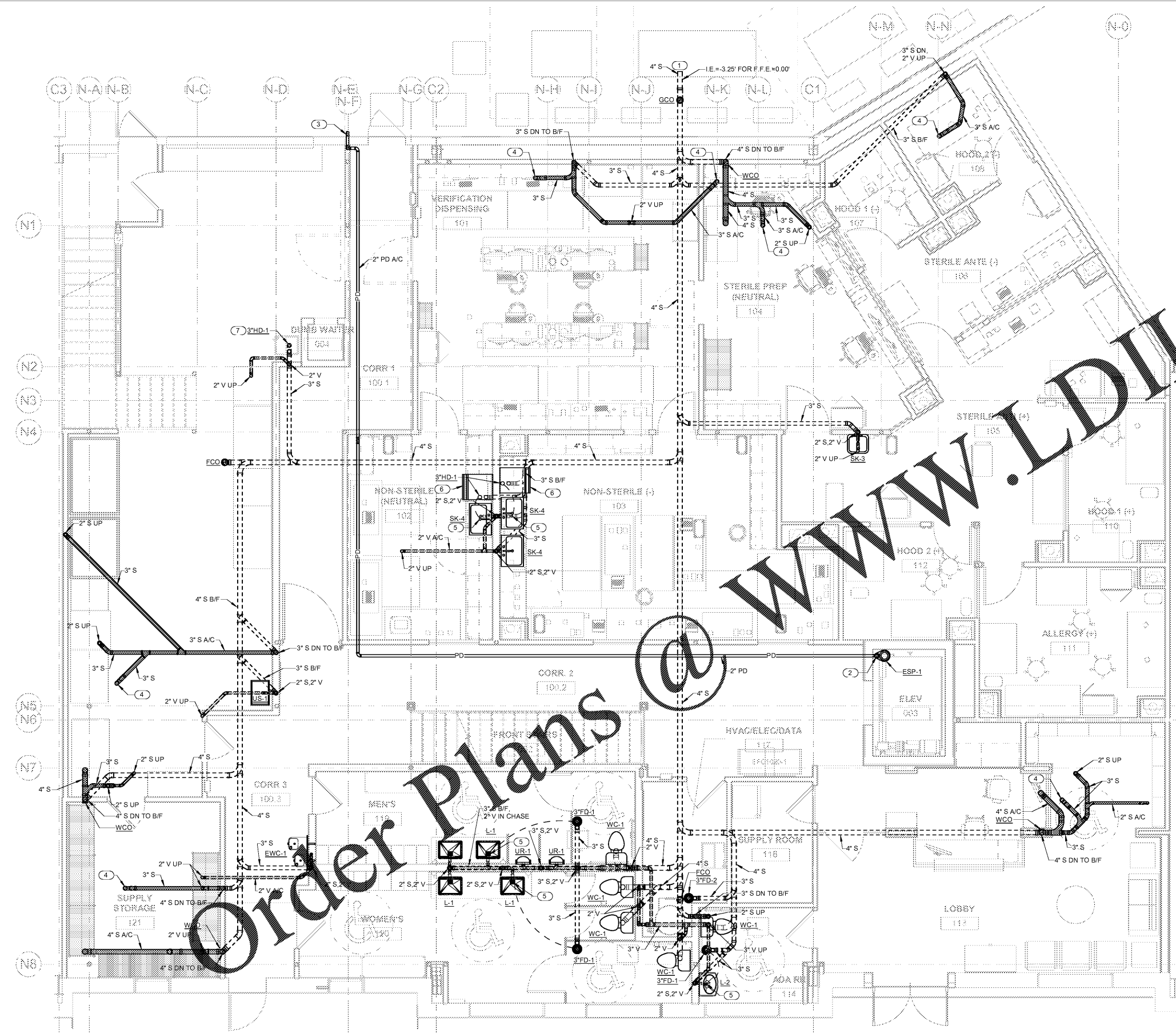




**CROSSFIELDS**  
 CHIROPRACTIC OFFICE DESIGN

3245 Buchanan Parkway  
 Suite 3015  
 Duluth, GA 30096  
 Phone: 770.424.9200  
 Fax: 770.424.9201  
 Web: www.ChiropracticOfficeDesign.com

- KEYNOTES**
- 4" S BIG & CONNECT TO EXISTING SITE SANITARY SEWER. FIELD VERIFY EXACT LOCATION, DEPTH, AND DIRECTION OF FLOW PRIOR TO COMMENCING WORK.
  - 2" PD DN TO ELEVATOR SUMP PUMP, SEE DETAIL.
  - 2" PD DN IN WALL AND TO EXTERIOR WITH TURN DOWN OVER SPLASH BLOCK.
  - P-TRAP HIGH WITH WASTE PIPING TO BE IN ABOVE SIZE AS NOTED.
  - TRAP PRIMER TP-L WITH 1/2" LINE BIF TO
  - EXTEND DRAIN HOSE FROM CLOTHES WASHER TO HUB DRAIN.
  - PROVIDE INLET GASKET SEALER TRAP FOR DRAIN BODY (ASSE 1072; SURE SEAL 2330).



WWW.LDILine.com

Order Plans @



THIS DRAWING IS THE PROPERTY OF CROSSFIELDS, INC. AND ANY REPRODUCTION OR COPYING OF THIS DRAWING, IN WHOLE OR PART IS PROHIBITED WITH OUT WRITTEN PERMISSION.

**INNOVATION  
 COMPOUNDING  
 DR. SHAWN HODGES**  
 6095 PINE MOUNTAIN RD., SUITE 104  
 KENNESAW, GA 30152

REVISIONS:

NO.	DATE	DESCRIPTION

DRAWN BY: DS  
 CHECKED BY: MR  
 DATE: 09.24.19  
 PROJECT NUMBER: 17125-IC  
 SHEET NO:

**PI.1A**

1 1ST FLOOR PLAN - WASTE & VENT  
 P1.1A 1/4" = 1'-0"

ISSUED FOR PERMITTING