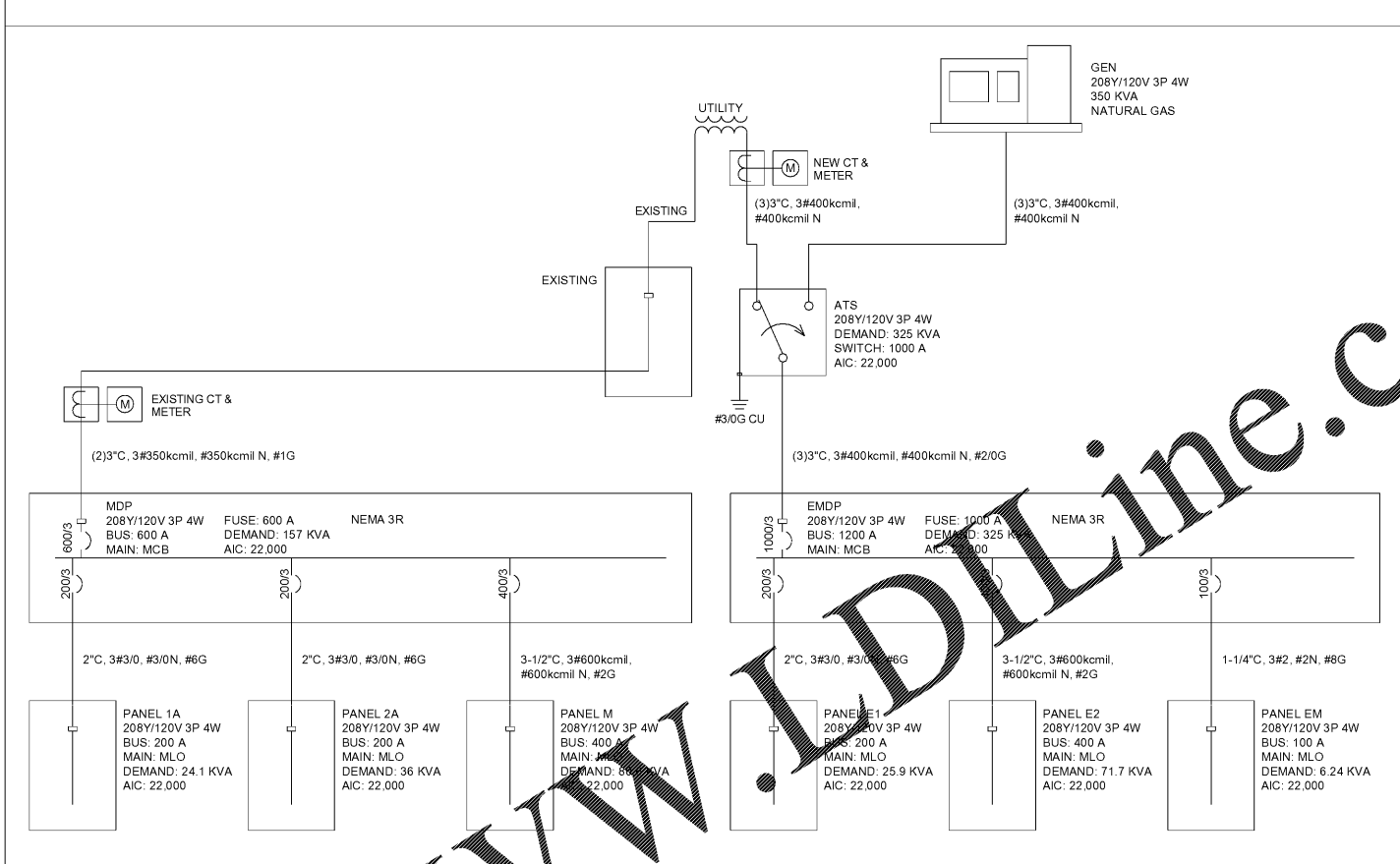


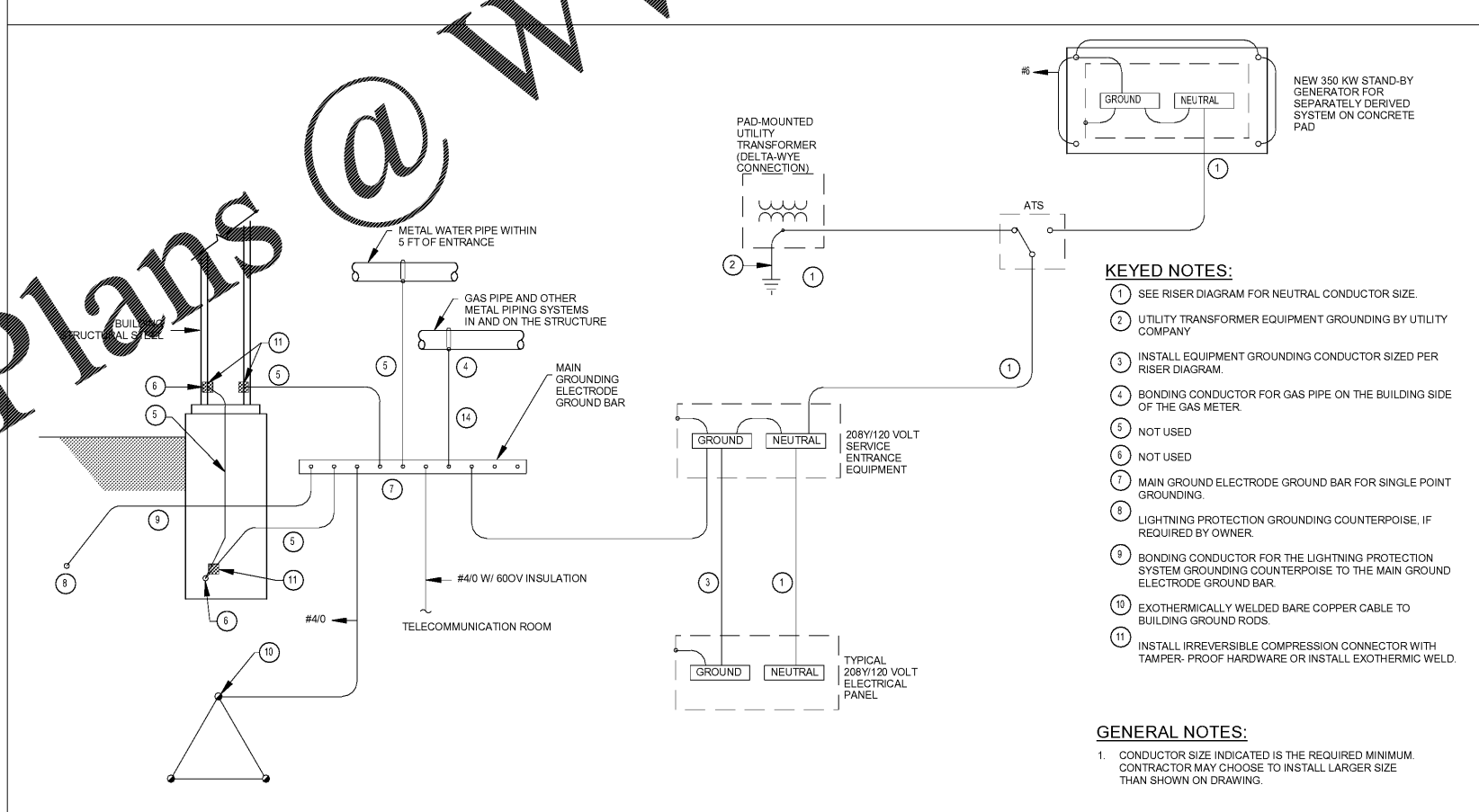
Panel	ROOM	MOUNTING SURFACE	VOLTS	208Y/120V 3P 4W	AIC	22,000	
MDP	FED FROM EXISTING	NEUTRAL 100%	BUS AMPS 600	MAIN BKR 600	LUGS STANDARD		
NOTE	NEMA 3R						
CKT #	CKT BKR	LOAD KVA	CIRCUIT DESCRIPTION	CKT #	CKT BKR	LOAD KVA	CIRCUIT DESCRIPTION
1	200/3	32.8	PANEL 1A	a 2	200/3	37.6	PANEL 2A
3				b 4			
5				c 6			
7	400/3	78.3	PANEL M	a 8	90/3	24.0	WH-1
9				b 10			
11				c 12			
13	20/1	0.0	SPACE	a 14	20/1	0.0	SPACE
15	20/1	0.0	SPACE	b 16	20/1	0.0	SPACE
17	20/1	0.0	SPACE	c 18	20/1	0.0	SPACE
19	20/1	0.0	SPACE	a 20	20/1	0.0	SPACE
21	20/1	0.0	SPACE	b 22	20/1	0.0	SPACE
23	20/1	0.0	SPACE	c 24	20/1	0.0	SPACE
25	20/1	0.0	SPACE	a 26	20/1	0.0	SPACE
27	20/1	0.0	SPACE	b 28	20/1	0.0	SPACE
29	20/1	0.0	SPACE	c 30	20/1	0.0	SPACE
31	20/1	0.0	SPACE	a 32	20/1	0.0	SPACE
33	20/1	0.0	SPACE	b 34	20/1	0.0	SPACE
35	20/1	0.0	SPACE	c 36	20/1	0.0	SPACE
37	20/1	0.0	SPACE	a 38	20/1	0.0	SPACE
39	20/1	0.0	SPACE	b 40	20/1	0.0	SPACE
41	20/1	0.0	SPACE	c 42	20/1	0.0	SPACE
		CONN KVA	CALC KVA		CONN KVA	CALC KVA	
LIGHTING		4.9	6.1 (125%)	RECEPTACLES	49.1	29.6 (50%>10)	
LARGEST MOTOR		11.6	2.9 (25%)	KITCHEN EQUIPMENT	1.2	1.2 (100%)	
MOTORS		22.4	22.4 (100%)	NONCONTINUOUS	1.8	1.8 (100%)	
				HEATING	93.4	93.4 (100%)	
				TOTAL LOAD	157.3		
				BALANCED 3-PHASE AMPS	436.7		
				PHASE A	107%		
				PHASE B	107%		
				PHASE C	85.8%		

Panel	ROOM	MOUNTING SURFACE	VOLTS	208Y/120V 3P 4W	AIC	22,000	
EMDP	FED FROM ATS	NEUTRAL 100%	BUS AMPS 1200	MAIN BKR 1000	LUGS STANDARD		
NOTE	NEMA 3R						
CKT #	CKT BKR	LOAD KVA	CIRCUIT DESCRIPTION	CKT #	CKT BKR	LOAD KVA	CIRCUIT DESCRIPTION
1	110/3	30.0	EDH-1	a 2	110/3	29.4	CROU-1
3				b 4			
5				c 6			
7	250/3	65.0	EDH-2	a 8	175/3	45.2	CROU-2
9				b 10			
11				c 12			
13	70/3	20.0	EDH-3	a 14	60/3	13.7	CROU-3
15				b 16			
17				c 18			
19	80/3	22.4	ELEV-A	a 20	20/1	0.0	SPACE
21				b 22	20/1	0.0	SPACE
23				c 24	20/1	0.0	SPACE
25	20/1	0.0	SPACE	a 26	20/1	0.0	SPACE
27	20/1	0.0	SPACE	b 28	20/1	0.0	SPACE
29	20/1	0.0	SPACE	c 30	20/1	0.0	SPACE
31	20/1	0.0	SPACE	a 32	100/3	6.2	PANEL EM
33	20/1	0.0	SPACE	b 34			
35	20/1	0.0	SPACE	c 36			
37	200/3	38.3	PANEL E1	a 38	20/1	26.7	PANEL E2
39				b 40			
41				c 42			
		CONN KVA	CALC KVA		CONN KVA	CALC KVA	
LIGHTING		2.2	2.7 (125%)	MOTORS	45.6	45.6 (100%)	
LARGEST MOTOR		22.4	5.6 (25%)	RECEPTACLES	45.8	27.9 (50%>10)	
MOTORS				NONCONTINUOUS	2.7	2.7 (100%)	
				HEATING	240.7	240.7 (100%)	
				TOTAL LOAD	325.3		
				BALANCED 3-PHASE AMPS	902.9		
				PHASE A	98.0%		
				PHASE B	101%		
				PHASE C	99.8%		

ONE-LINE DIAGRAM



GROUNDING AND BONDING DETAIL



KEYED NOTES:

- SEE RISER DIAGRAM FOR NEUTRAL CONDUCTOR SIZE.
- UTILITY TRANSFORMER EQUIPMENT GROUNDING BY UTILITY COMPANY
- INSTALL EQUIPMENT GROUNDING CONDUCTOR SIZED PER RISER DIAGRAM.
- BONDING CONDUCTOR FOR GAS PIPE ON THE BUILDING SIDE OF THE GAS METER.
- NOT USED
- NOT USED
- MAIN GROUND ELECTRODE GROUND BAR FOR SINGLE POINT GROUNDING.
- LIGHTNING PROTECTION GROUNDING COUNTERPOISE, IF REQUIRED BY OWNER.
- BONDING CONDUCTOR FOR THE LIGHTNING PROTECTION SYSTEM GROUNDING COUNTERPOISE TO THE MAIN GROUND ELECTRODE GROUND BAR.
- EXOTHERMICALLY WELDED BARE COPPER CABLE TO BUILDING GROUND RODS.
- INSTALL IRREVERSIBLE COMPRESSION CONNECTOR WITH TAMPER-PROOF HARDWARE OR INSTALL EXOTHERMIC WELD.

GENERAL NOTES:

- CONDUCTOR SIZE INDICATED IS THE REQUIRED MINIMUM. CONTRACTOR MAY CHOOSE TO INSTALL LARGER SIZE THAN SHOWN ON DRAWING.



CROSSFIELDS
CHIROPRACTIC OFFICE DESIGN



THIS DRAWING IS THE PROPERTY OF CROSSFIELDS, INC. AND ANY REPRODUCTION OR COPYING OF THIS DRAWING, IN WHOLE OR PART IS PROHIBITED WITH OUT WRITTEN PERMISSION.

INNOVATION
COMPOUNDING
DR. SHAWN HODGES
6095 PINE MOUNTAIN RD, SUITE 104
KENNESAW, GA 30152

REVISIONS:

NO.	DATE	DESCRIPTION

DRAWN BY: AT
CHECKED BY: BA
DATE: 09.24.19
PROJECT NUMBER: 17125-IC
SHEET NO:

E0.2

ISSUED FOR PERMITTING