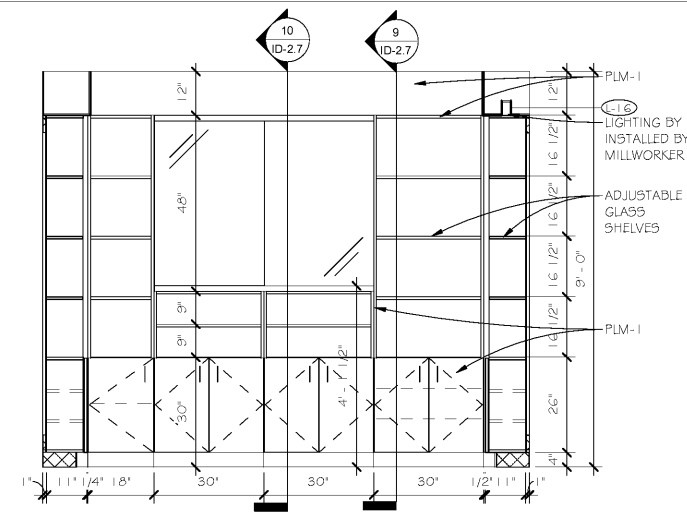
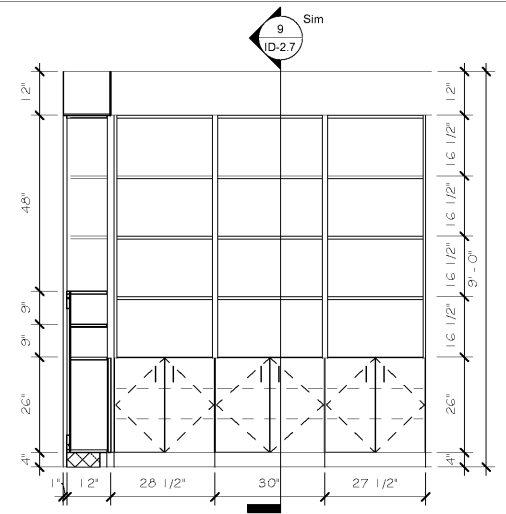


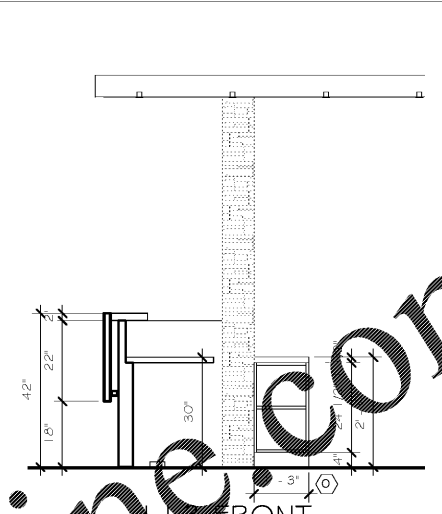
10 113 FRONT DESK/RETAIL-WEST  
ID-2.1 1/2" = 1'-0"



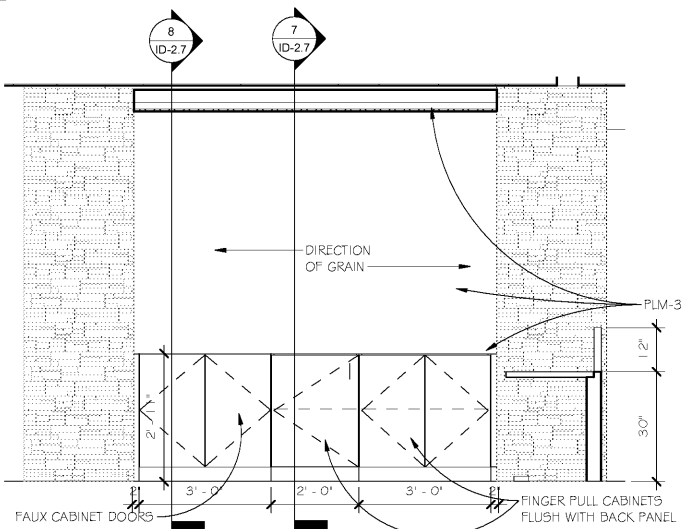
9 113 RETAIL-NORTH  
ID-2.1 1/2" = 1'-0"



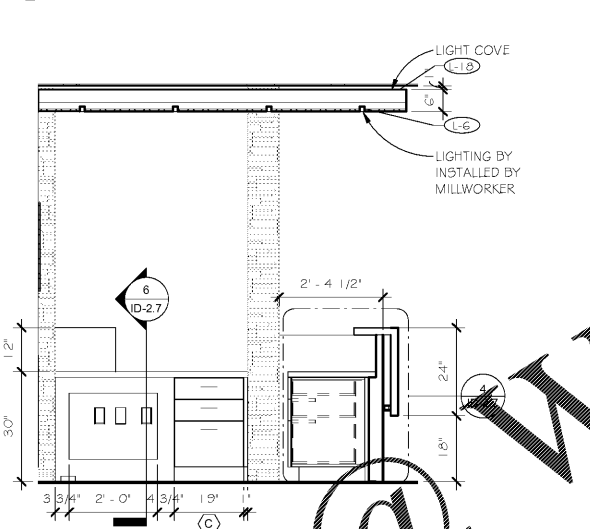
8 113 RETAIL-EAST  
ID-2.1 1/2" = 1'-0"



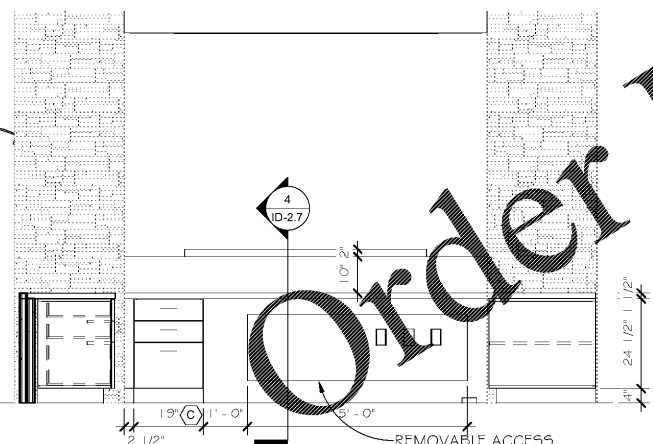
7 113 DESK-BACK-WEST  
ID-2.1 1/2" = 1'-0"



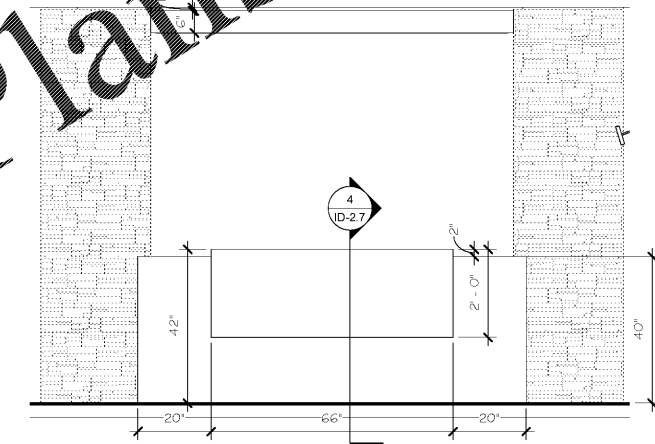
6 113 FRONT DESK-BACK-NORTH  
ID-2.1 1/2" = 1'-0"



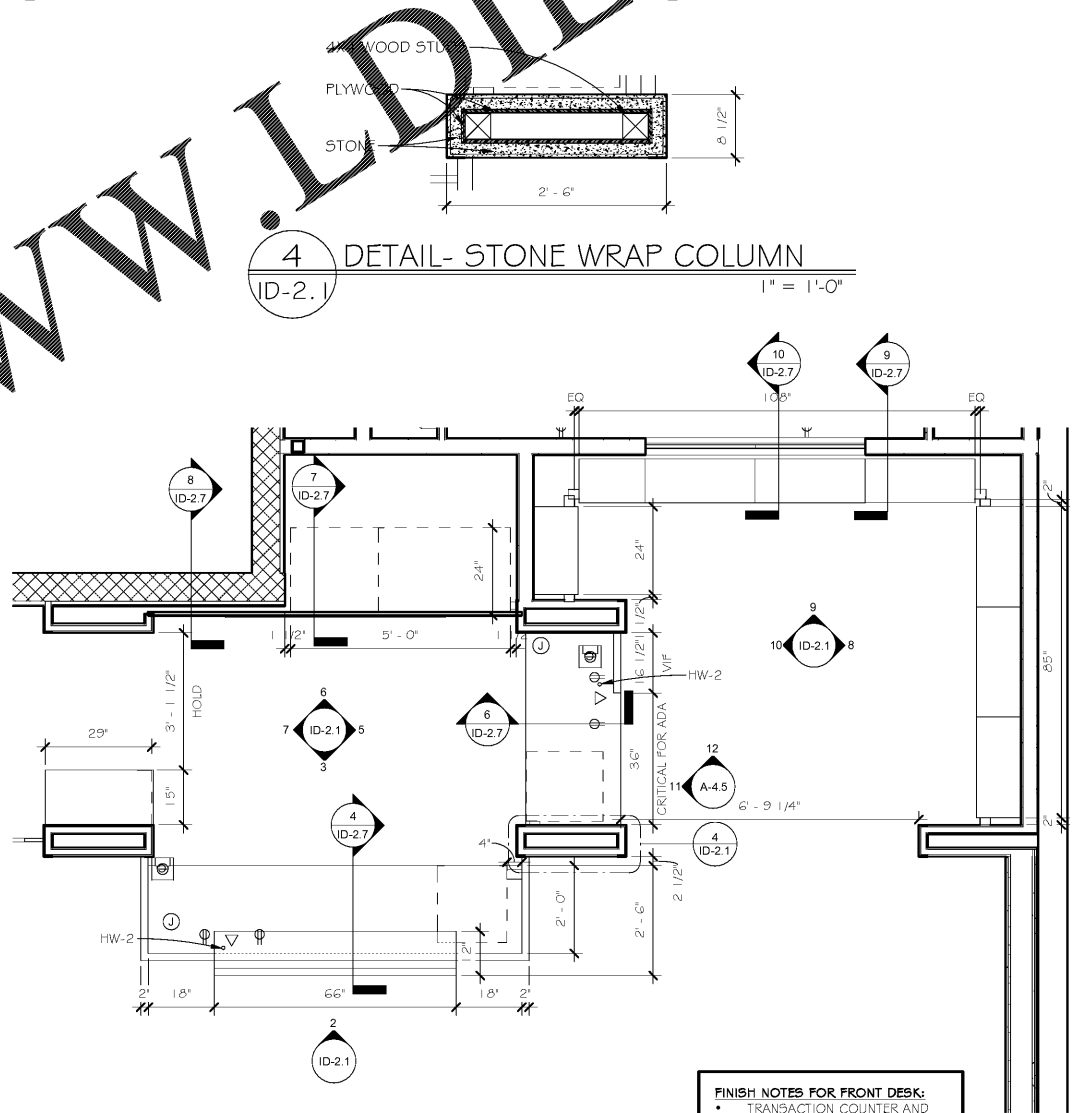
5 113 FRONT DESK-BACK-EAST  
ID-2.1 1/2" = 1'-0"



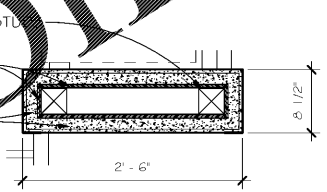
3 113 FRONT DESK-BACK-SOUTH  
ID-2.1 1/2" = 1'-0"



2 113 FRONT DESK-FRONT  
ID-2.1 1/2" = 1'-0"



1 FRONT DESK PLAN  
ID-2.1 1/2" = 1'-0"



4 DETAIL- STONE WRAP COLUMN  
ID-2.1 1" = 1'-0"

**FINISH NOTES FOR FRONT DESK:**  
 • TRANSACTION COUNTER AND FRONT APRON: 55-6  
 • ALL CASEWORK: PLM-2  
 • BACK WALL AND SOFFIT: PLM-3  
 • ALL PULLS: HW-1  
 • EXCEPT BACKWALL: HW-6  
 SEE SEPARATE DOCUMENT FOR SELECTIONS AND DETAILS

Order Plans @ [www.lidilinc.com](http://www.lidilinc.com)

**CROSSFIELDS**  
 CHIROPRACTIC OFFICE DESIGN

3265 Spangue Parkway  
 Suite 3015  
 Kennesaw, GA 30143  
 Owner: 770.424.9200  
 Web: www.ChiropracticOfficeDesign.com

THIS DRAWING IS THE PROPERTY OF CROSSFIELDS, INC. AND ANY REPRODUCTION OR COPYING OF THIS DRAWING, IN WHOLE OR PART IS PROHIBITED WITHOUT WRITTEN PERMISSION.

**INNOVATION**  
**COMPOUNDING**  
**DR. SHAWN HODGES**  
 6095 PINE MOUNTAIN RD. SUITE 104  
 KENNESAW, GA 30152

REVISIONS:		
NO.	DATE	DESCRIPTION

DRAWN BY: CMB/LEB  
 CHECKED BY: CMB  
 DATE: 09.24.19  
 PROJECT NUMBER: 17125-IC  
 SHEET NO:

ID-2.1

FOR PERMIT