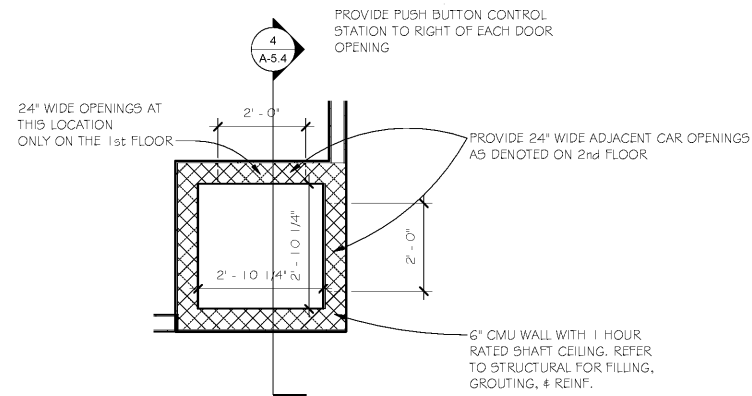
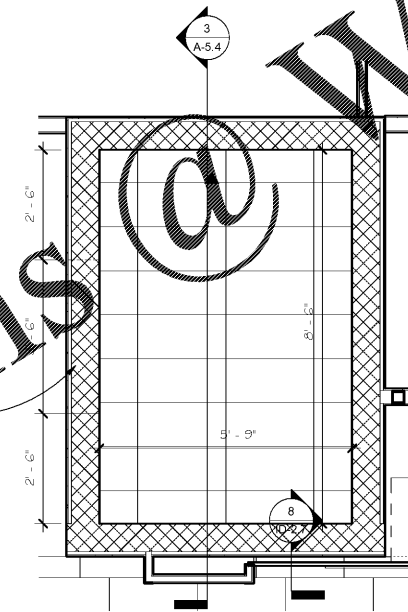


DUMBWATER IS DESIGNED BASED ON 1000 LB CAPACITY WITH 50 FEET PER MINUTE TRAVEL. PROVIDE SHOP DRAWING SUBMITTAL FOR APPROVAL PRIOR TO CONSTRUCTION OF DUMBWATER SHAFT AND RELEASE OF ORDER. REFER TO SEPARATE SPECIFICATIONS FOR FINISHES. EQUAL SUBSTITUTIONS WILL BE CONSIDERED.

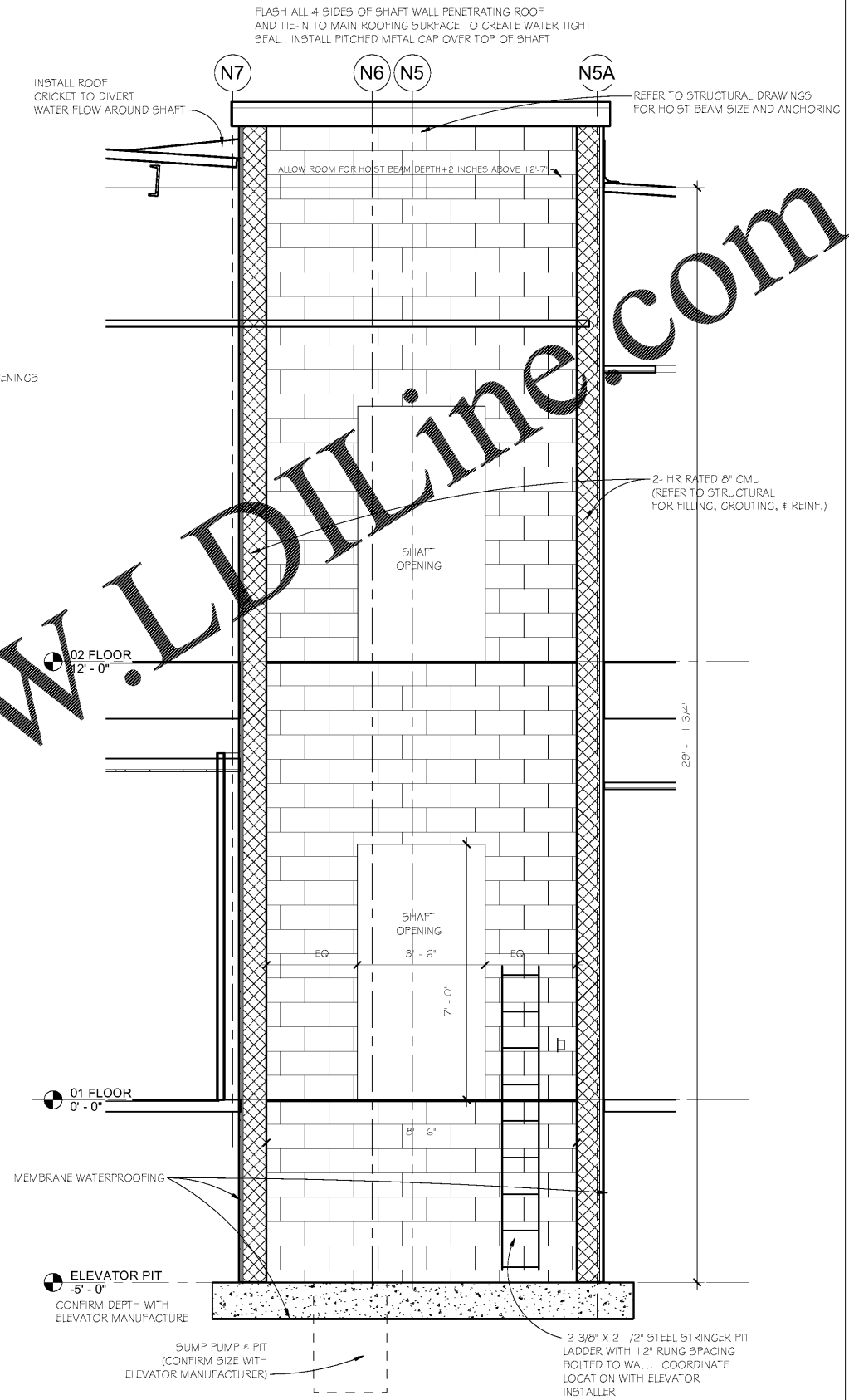


2 DUMBWATER
A-5.4 1/2" = 1'-0"



ELEVATOR IS DESIGNED BASED ON SCHINDLER 3100 MRL TRACTION ELEVATOR, CAPACITY 2500 LB. MODEL WITH FRONT CENTER OPENING DOOR AND 100 FEET SPEED PER MINUTE. PROVIDE SHOP DRAWING SUBMITTAL FOR APPROVAL PRIOR TO CONSTRUCTION OF ELEVATOR SHAFT AND RELEASE OF ORDER. REFER TO SEPARATE SPECIFICATIONS FOR FINISHES.

1 ELEVATOR
A-5.4 1/2" = 1'-0"



3 ELEVATOR
A-5.4 1/2" = 1'-0"

CROSSFIELDS
CHIROPRACTIC OFFICE DESIGN

3265 Spangue Parkway
Kennesaw, GA 30144
Office: 770.424.9200
Fax: 770.424.9201
www.ChiropracticOfficeDesign.com

THIS DRAWING IS THE PROPERTY OF CROSSFIELDS, INC. AND ANY REPRODUCTION OR COPYING OF THIS DRAWING, IN WHOLE OR PART IS PROHIBITED WITHOUT WRITTEN PERMISSION.

**INNOVATION
COMPOUNDING
DR. SHAWN HODGES**
6095 PINE MOUNTAIN RD., SUITE 104
KENNESAW, GA 30152

REVISIONS:		
NO.	DATE	DESCRIPTION

DRAWN BY: MVS
CHECKED BY: CMB/SB
DATE: 09.24.19
PROJECT NUMBER: 17125-IC
SHEET NO:

A-5.4

FOR PERMIT