

THIS DRAWING IS THE PROPERTY OF CROSSFIELDS, INC. AND ANY REPRODUCTION OR COPYING OF THIS DRAWING, IN WHOLE OR PART IS PROHIBITED WITHOUT WRITTEN PERMISSION.

**INNOVATION  
 COMPOUNDING  
 DR. SHAWN HODGES**  
 6095 PINE MOUNTAIN RD., SUITE 104  
 KENNESAW, GA 30152

REVISIONS:

NO.	DATE	DESCRIPTION

DRAWN BY: SB      CHECKED BY: CMB/SB

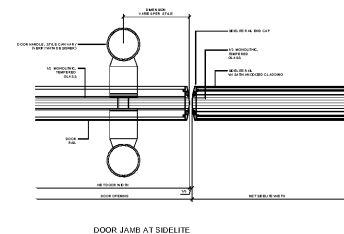
DATE: 09.24.19

PROJECT NUMBER: 17125-IC

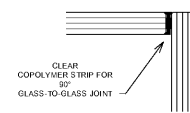
SHEET NO:

**A-4.7**

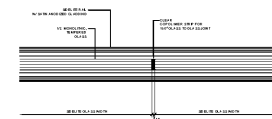
FOR PERMIT



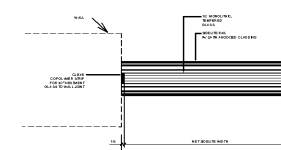
12 GL. DOOR JAMB  
 A-4.7 3" = 1'-0"



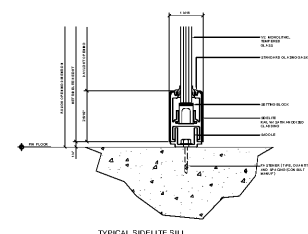
11 GLASS CORNER  
 A-4.7 6" = 1'-0"



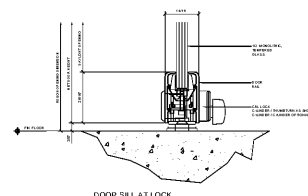
10 GLASS JOINT  
 A-4.7 3" = 1'-0"



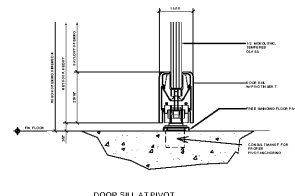
9 GLASS AT WALL  
 A-4.7 3" = 1'-0"



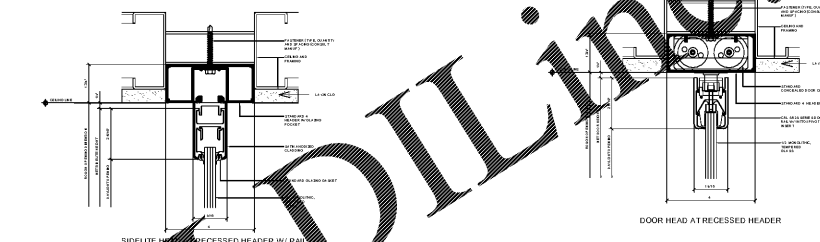
8 GL. SIDELITE SILL  
 A-4.7 3" = 1'-0"



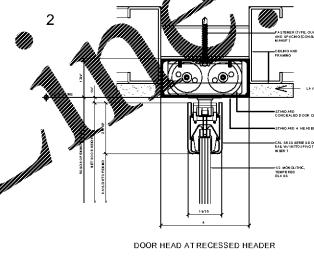
7 GL DOOR AT LOCK  
 A-4.7 3" = 1'-0"



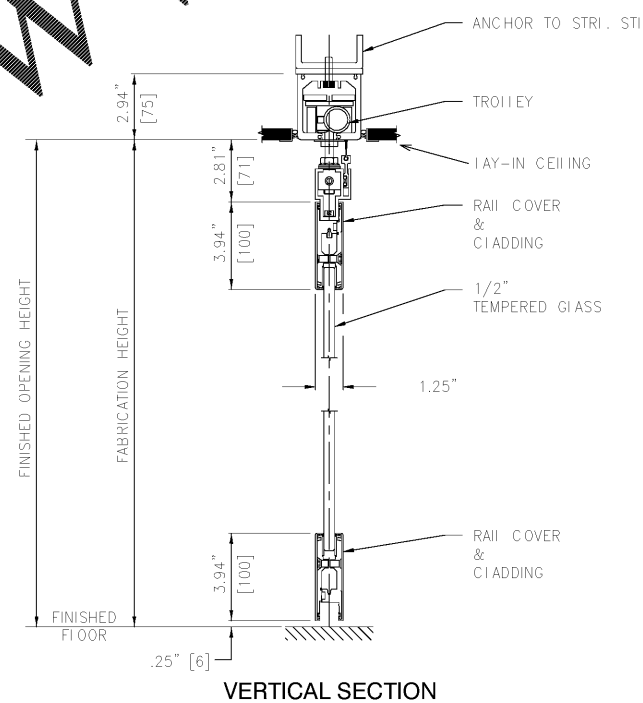
6 DOOR @ PIVOT  
 A-4.7 3" = 1'-0"



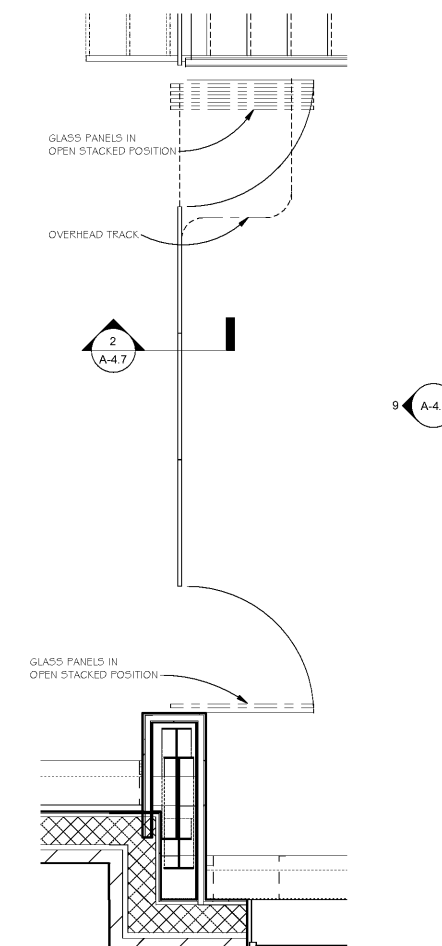
5 SIDELITE HEADER  
 A-4.7 3" = 1'-0"



4 GL. DOOR CLOSER  
 A-4.7 3" = 1'-0"



2 MOVEABLE WALL  
 A-4.7 3" = 1'-0"



1 MOVEABLE GLASS WALL SYSTEM  
 A-4.7 1/2" = 1'-0"

Order Plans @ [www.IDIline.com](http://www.IDIline.com)