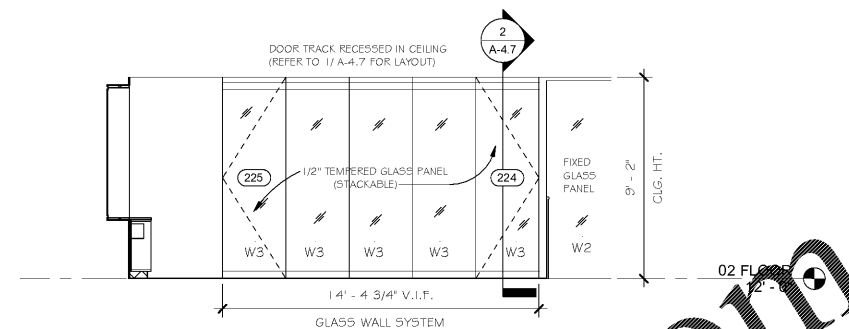
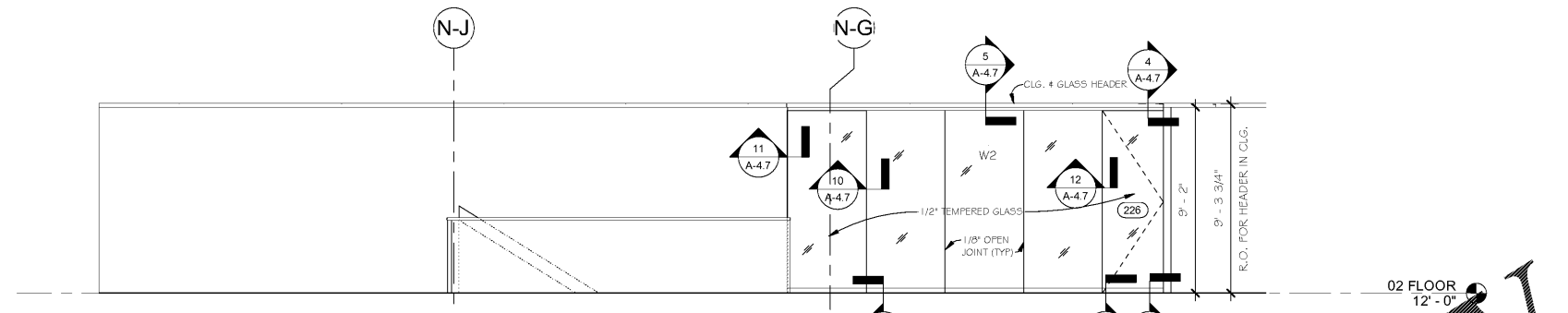


10 2ND FLOOR CORRIDOR 1
A-4.6 1/4" = 1'-0"

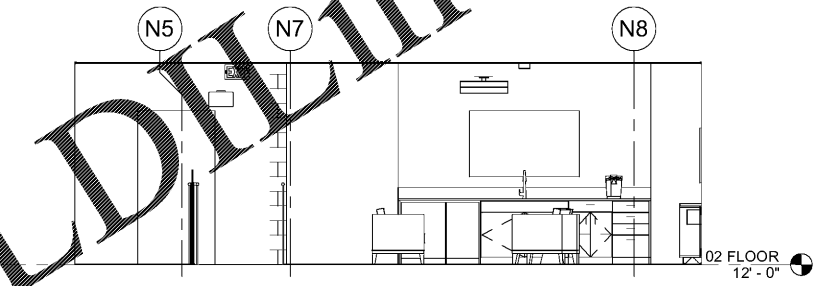
NOTE: ALL WINDOW DIMENSIONS ARE FINISH DIMENSIONS
CONFIRM ROUGH OPENING



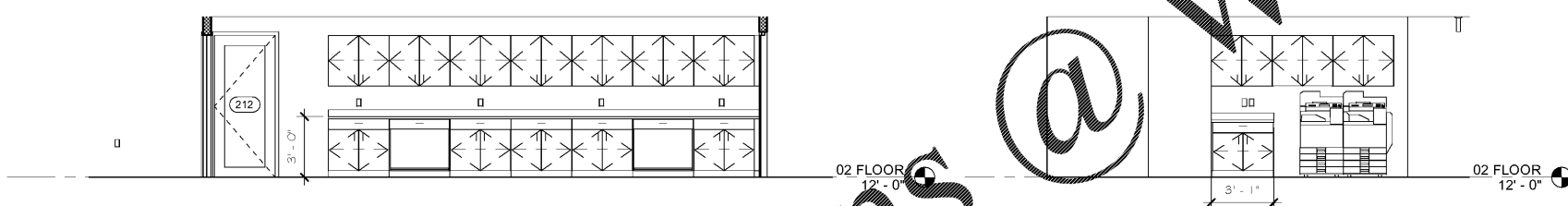
9 CONFERENCE ROOM ENTRANCE
A-4.6 1/4" = 1'-0"



8 2ND FLOOR CORRIDOR 2
A-4.6 1/4" = 1'-0"

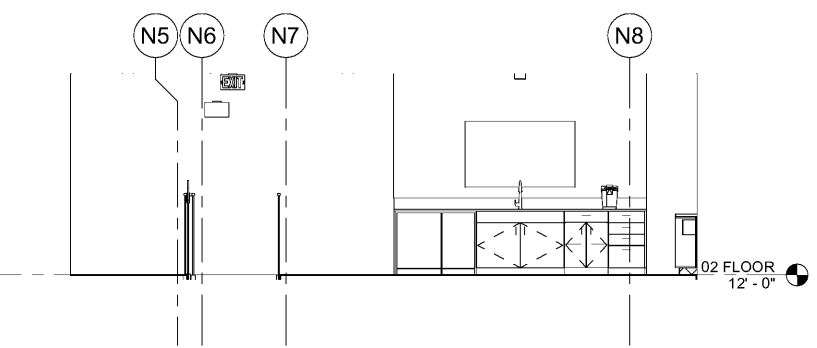


7 2ND FLOOR LOBBY
A-4.6 1/4" = 1'-0"

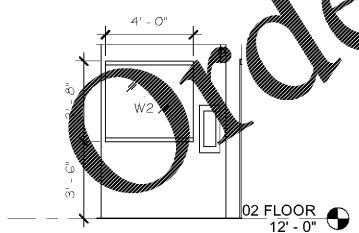


6 DATA ENTRY COUNTER
A-4.6 1/4" = 1'-0"

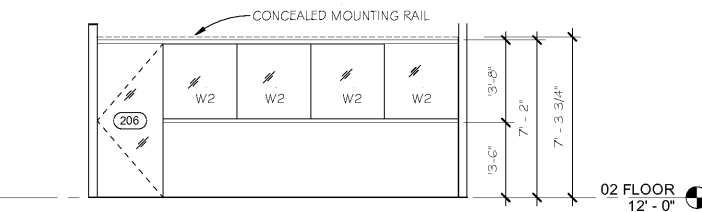
5 SALES COUNTER
A-4.6 1/4" = 1'-0"



4 HOSPITALITY
A-4.6 1/4" = 1'-0"



3 COOR. # 2 AT REAR STAIR
A-4.6 1/4" = 1'-0"



2 BREAK ROOM
A-4.6 1/4" = 1'-0"



1 2ND STORAGE
A-4.6 1/4" = 1'-0"

CROSSFIELDS
CHIROPRACTIC OFFICE DESIGN

3265 Spangue Parkway Suite 3015
Kennesaw, GA 30143
Office: 770.424.9020
Fax: 770.424.9020
www.ChiropracticOfficeDesign.com

THIS DRAWING IS THE PROPERTY OF
CROSSFIELDS, INC. AND ANY REPRODUCTION
OR COPYING OF THIS DRAWING, IN WHOLE OR
PART IS PROHIBITED WITHOUT WRITTEN
PERMISSION.

**INNOVATION
COMPOUNDING
DR. SHAWN HODGES**
6095 PINE MOUNTAIN RD. SUITE 104
KENNESAW, GA 30152

| REVISIONS: | |
|------------|-------------|
| NO. | DESCRIPTION |
| | |
| | |
| | |
| | |
| | |
| | |
| | |
| | |
| | |

DRAWN BY: CMB
CHECKED BY: CMB/SEB
DATE: 09.24.19
PROJECT NUMBER: 17125-IC
SHEET NO:

A-4.6

FOR PERMIT